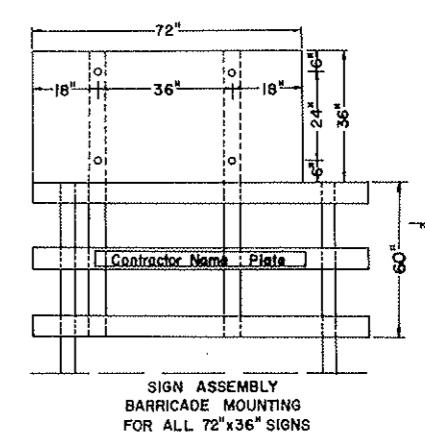
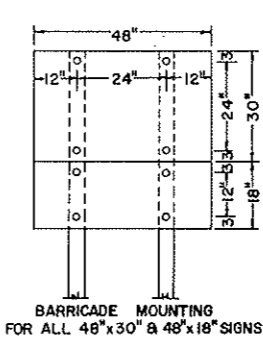
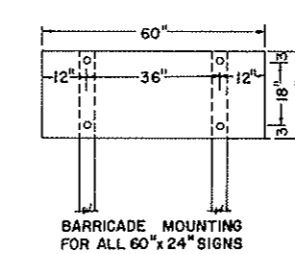
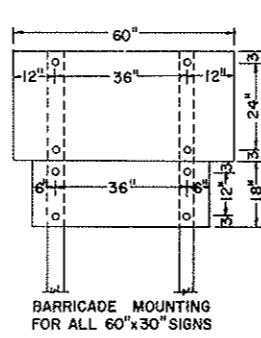
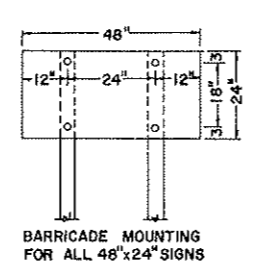
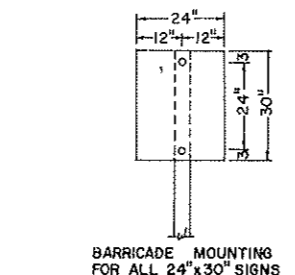
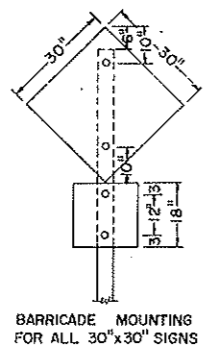
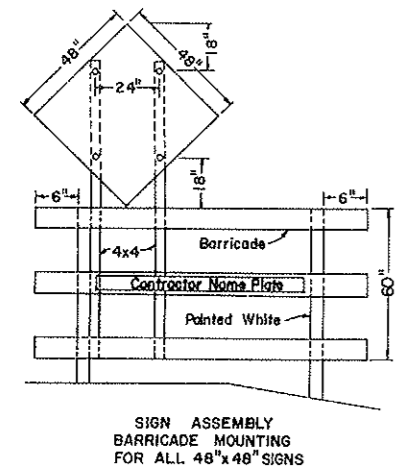
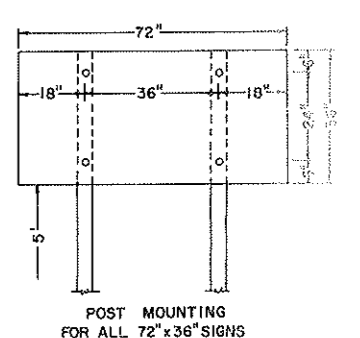
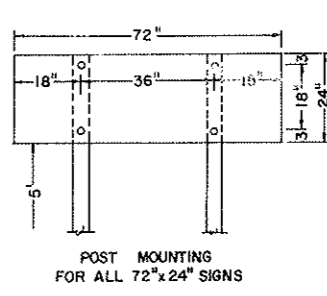
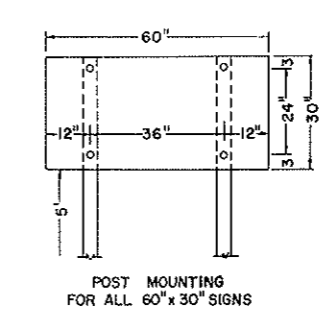
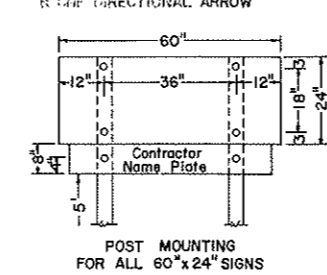
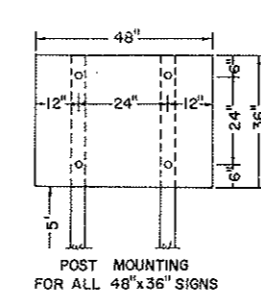
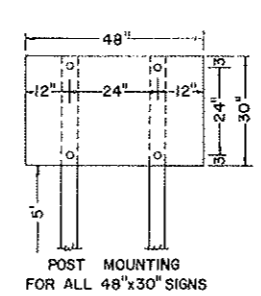
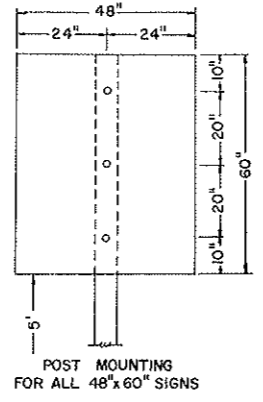
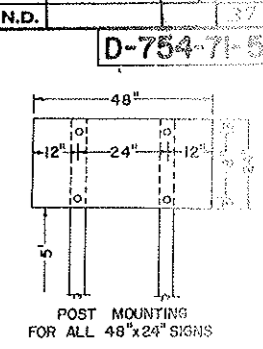
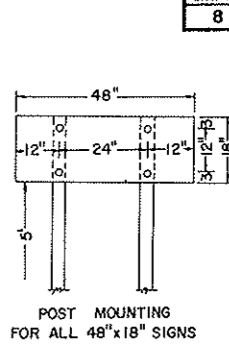
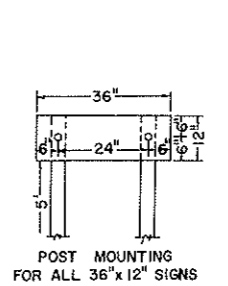
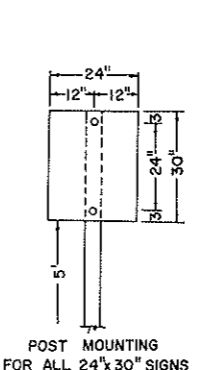
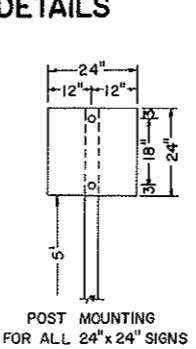
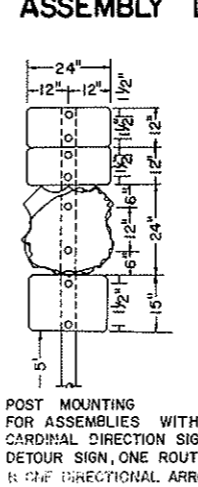
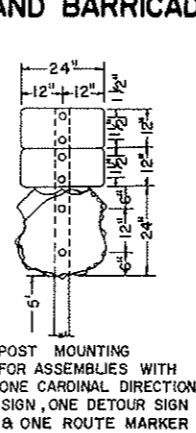
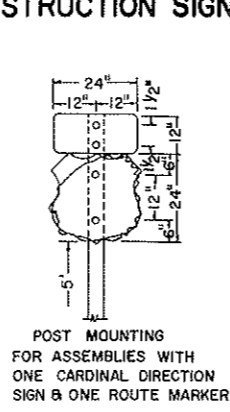
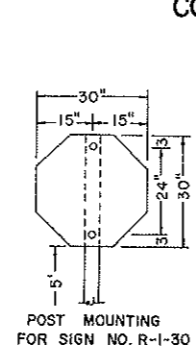
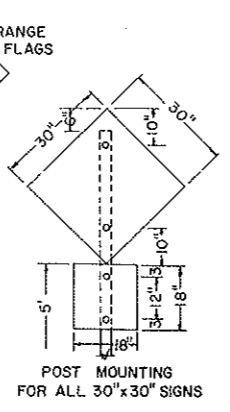
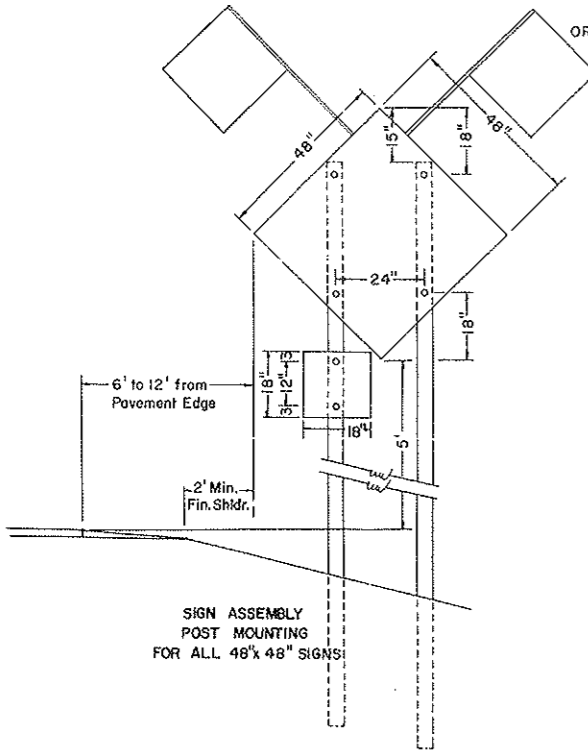
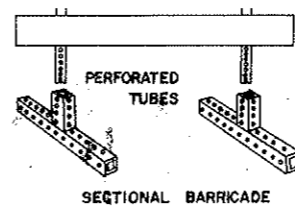
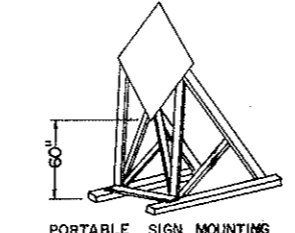
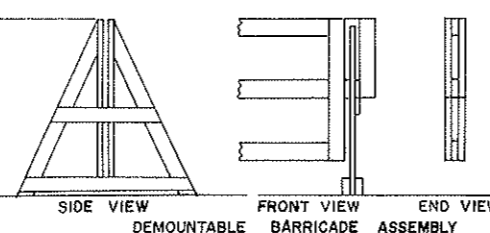
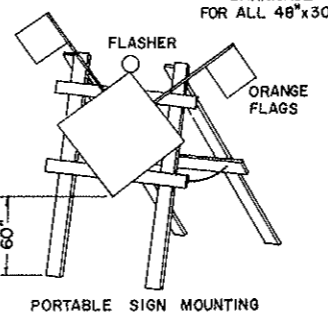
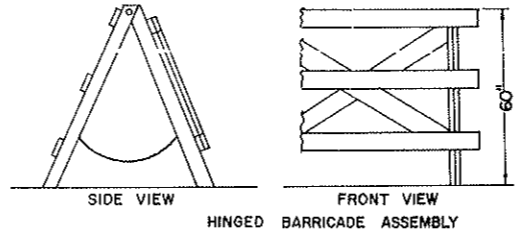
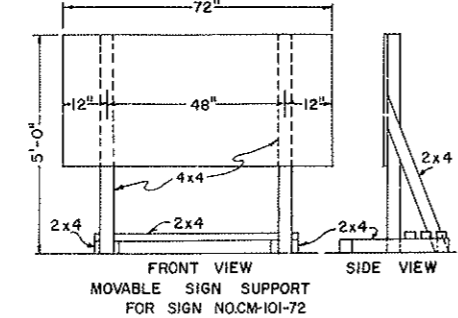
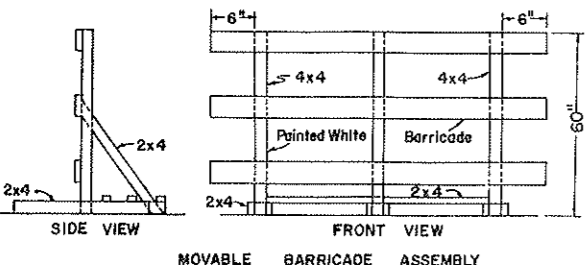
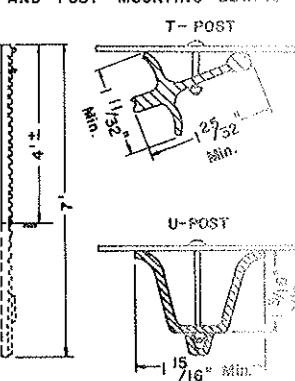


CONSTRUCTION SIGN AND BARRICADE ASSEMBLY DETAILS

D-754-71-5



DELINEATOR ATTACHMENT AND POST MOUNTING DETAILS



NOTES:
 DELINEATOR POSTS: Typical fence post sections are shown in Attachment Details. Other types of metal fence posts may be substituted upon approval of the engineer. These substituted posts shall have reflectors attached similar to the ones shown.
 BARRICADE MOUNTING SIGNS: The bottom of the sign shall be flush with the top of the top rail. Wood sign posts shall be 4x4 min. SFS or equivalent steel posts. See Sids. D-754-715 thru D-754-719 for construction sign and barricade location details. All barricades and barricade mounted signs shall be assembled with 3/8" bolts.
 SIGN SUPPORTS: The sign supports shall be imbedded to a sufficient depth so that the signs will remain plumb throughout duration of the project. It is suggested that the min. depth of imbedment be 5'-0".
 MATERIAL: All signs shall be 100" aluminum, 12 gage galv. steel, 1/2" plywood or other approved mat'l.
 HOLES: All holes to be punched round for 3/8" bolts.

| | | | |
|-----------|------------------|---|--|
| 3-13-72 | | NORTH DAKOTA STATE HIGHWAY DEPARTMENT | |
| REVISIONS | | Submitted: <i>P. Johnson</i> Design Engineer | |
| DATE | CHANGE | Recommended: <i>R. J. ...</i> Asst. Chief Engineer, Proj. Const. | |
| 6-5-72 | Mounting Details | Approved: <i>R. J. ...</i> Chief Engineer | |
| 9-19-73 | Sign Size | | |

CONSTRUCTION SIGN AND BARRICADE LOCATION DETAILS

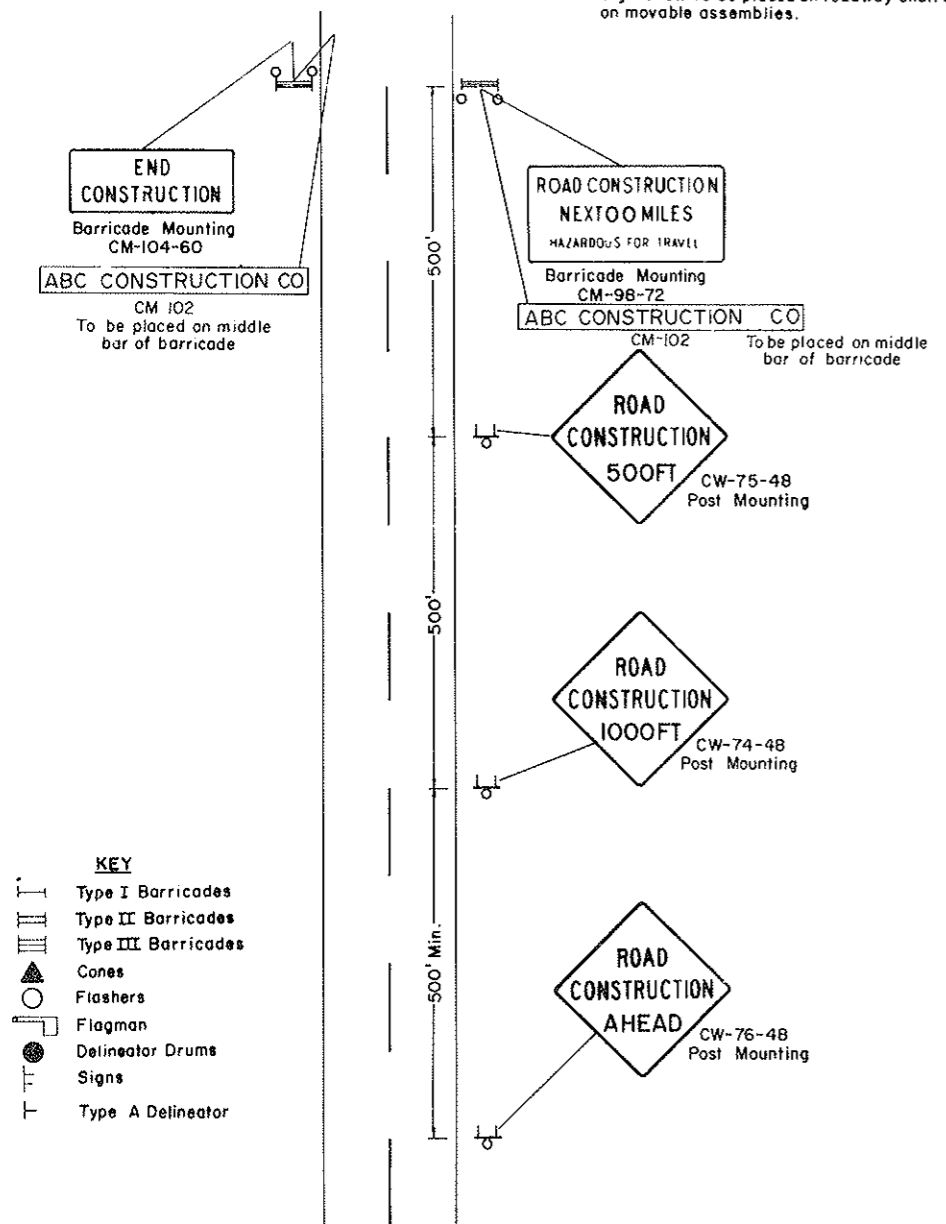
Note.
Sign No CM-101-72 shall be used on all projects where traffic is maintained. All intermediate signs shall be moved as work progresses and shall be removed when hazard ceases to exist. Two lighted flashers shall be maintained in front of all intermediate signs if hazard remains at night.

Lighting - Flashers shall be maintained as shown. If danger exists at night or work area is closed to the traffic lane, the edge of the traffic lane on the work area side shall be illuminated by flashers or reflectorized delineators spaced at 100ft. centers. The flashers shall be placed above the barricade bar and above the warning signs.

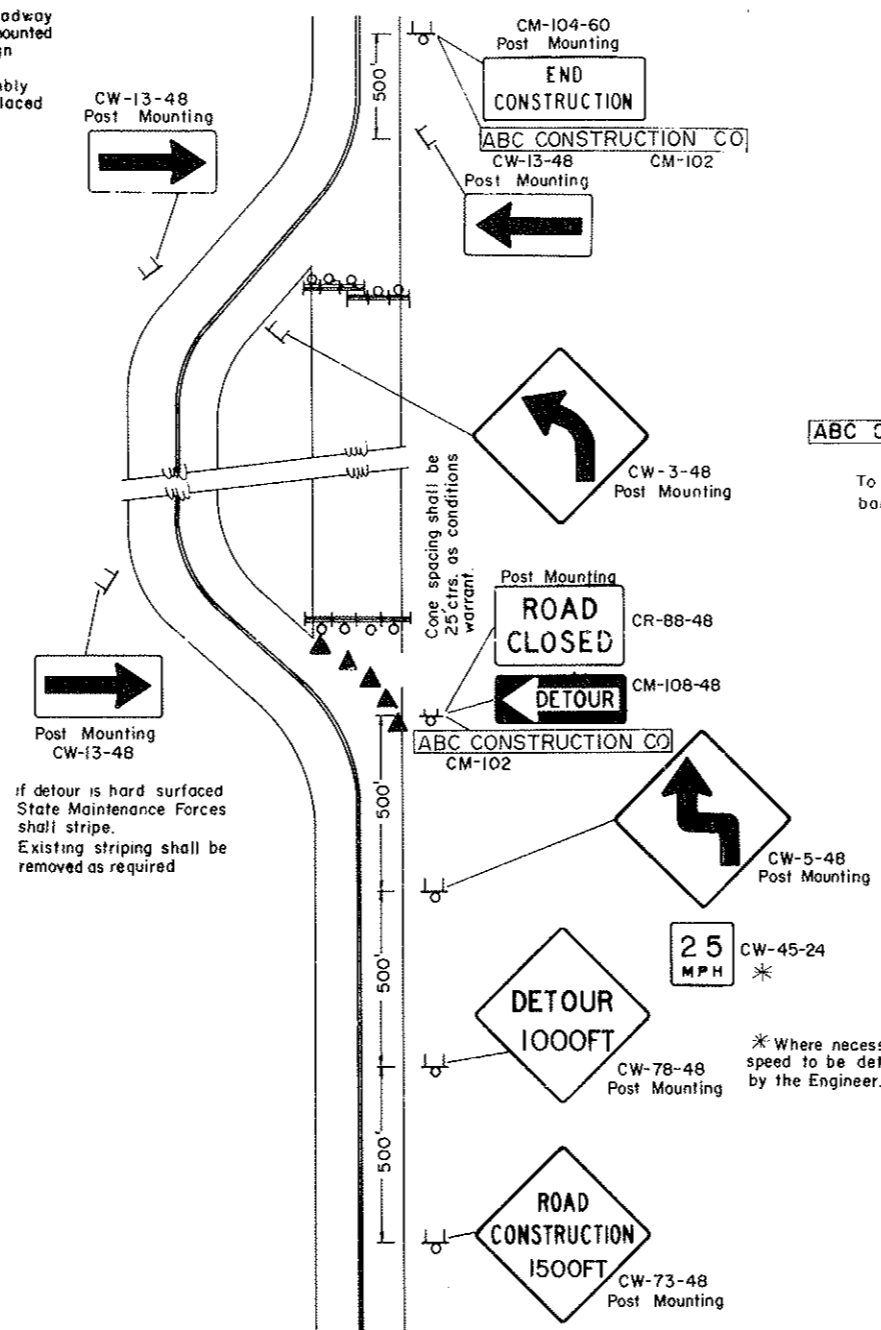
FLAGS: All advance warning signs shall have two orange warning flags 24" square mounted perpendicular to the edges of the diamond sign and at such a distance above the edges so that when flag is hung limp it will not touch the sign.

Where advance warning sign placed as shown interferes with permanent signs, The warning sign location shall be determined by the Engineer for best results. Messages shall be varied as required.

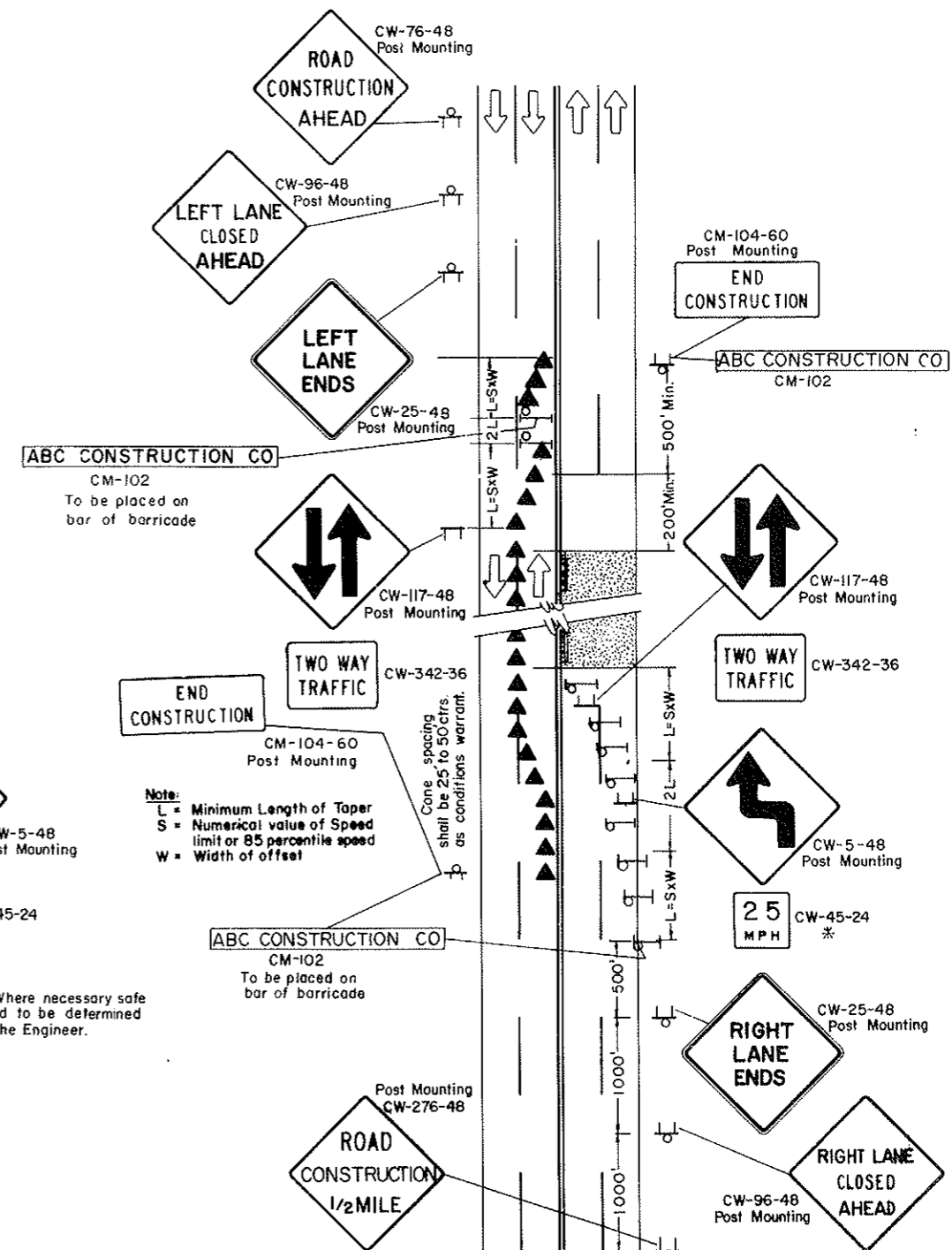
Mounting - Barricade shown to be placed on roadway shall be on a movable Assembly. Sign to be mounted on barricades shall be mounted with the sign bottom on the top of the top barricade bar. Intermediate Sign shall be on a movable assembly. Sign show to be placed on roadway shall be placed on movable assemblies.



TYPE A
CONSTRUCTION SIGN LAYOUT
2 & 4 Lane Highway when traffic is maintained.
(Sign shown for one end only)



TYPE B
CONSTRUCTION SIGN LAYOUT
2 Lane Highway where roadway is closed and detour is provided.
(Sign shown for one direction of travel only)



TYPE C
CONSTRUCTION SIGN LAYOUT
4 Lane Undivided Highway with half the roadway closed.

| 3-13-72 | |
|---------|--------|
| DATE | CHANGE |
| | |

NORTH DAKOTA
STATE HIGHWAY DEPARTMENT

Submitted: *W. Hanson*
Design Engineer

Recommended: *W. Hanson*
Asst. Chief Engineer, Pre-Const.

Approved: *W. Hanson*
Chief Engineer