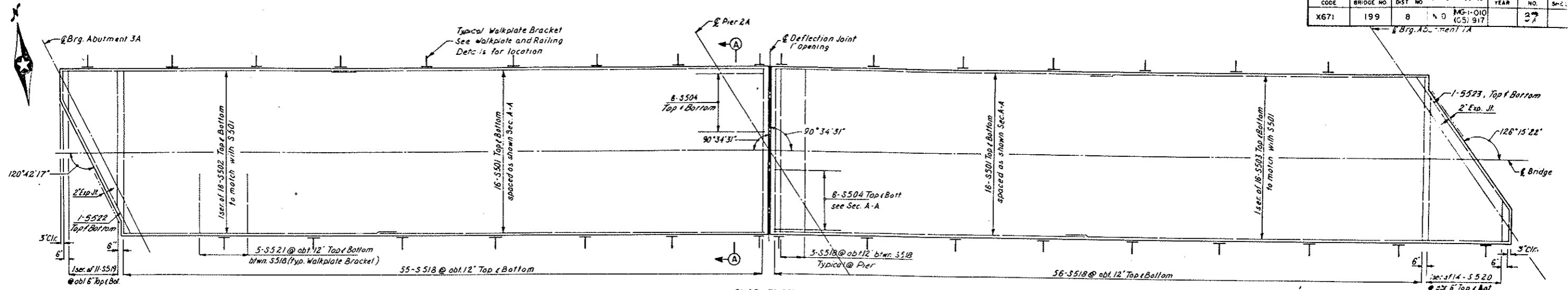
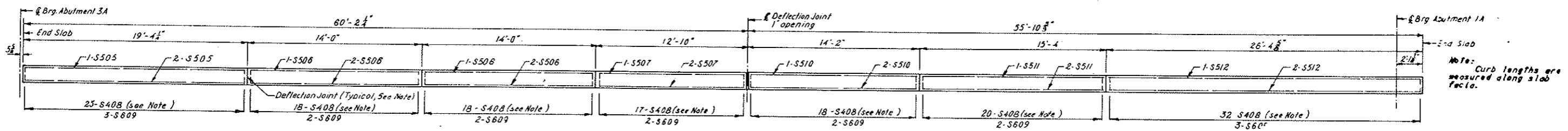


BRIDGE CODE	R.R. BRIDGE NO.	FED ROAD DIST NO.	STATE PROJ NO.	FISCAL YEAR	SHEET NO.	TOTAL SHEETS
X671	199	8	MO-1-010 (CS) 917		27	27

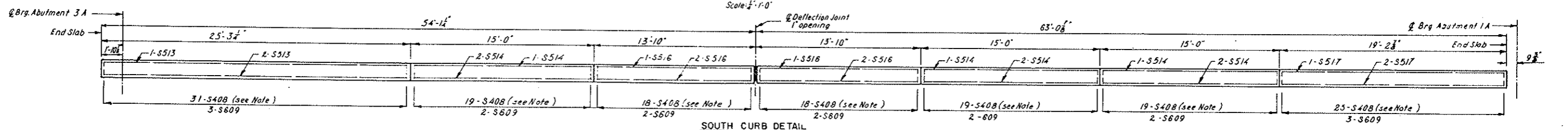


SLAB PLAN
Scale: 1/4" = 1'-0"

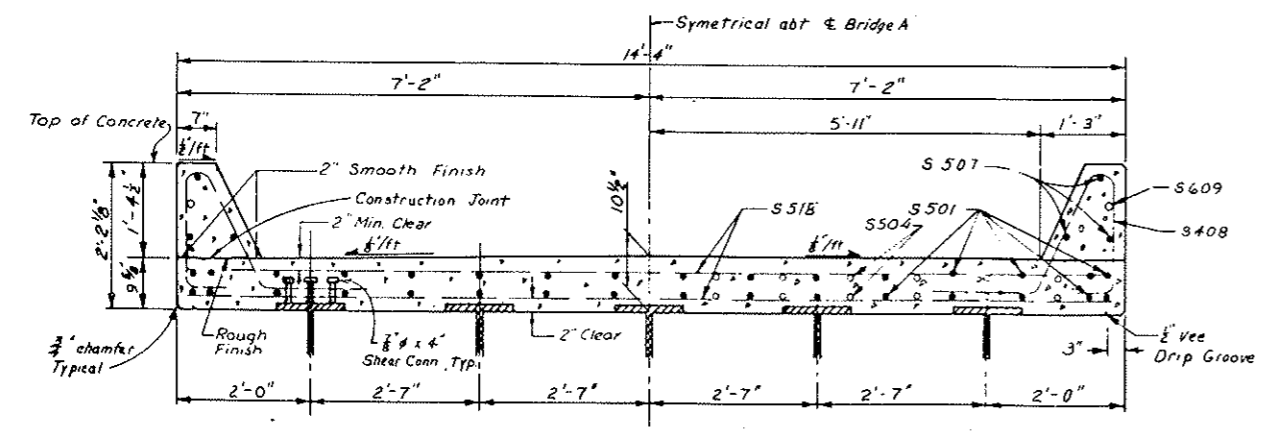


NORTH CURB DETAIL
Scale: 1/4" = 1'-0"

Note: Curb lengths are measured along slab face.



SOUTH CURB DETAIL
Scale: 1/4" = 1'-0"



SECTION A-A
Scale: 1/4" = 1'-0"

Note: Intermediate deflection joints in curb to be formed with 3/4" precast bituminous joint filler conforming to AASHTO Designation M33.

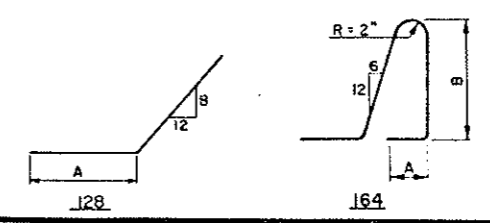
BILL OF REINFORCEMENT															
BAR NO.	NO.	SIZE	LENGTH	TYPE	DIMENSIONS		LOCATION	BAR NO.	NO.	SIZE	LENGTH	TYPE	DIMENSIONS		LOCATION
					A	B							A	B	
S501	64	5	30-0	Str.			Longitudinal	S512	3	5	26-0	Str.			Curb
S502	2 Ser.	5	25-9	Str.			Longitudinal	S513	3	5	24-10	Str.			Curb
	of 16		31-9					S514	9	5	14-8	Str.			Curb
S503	2 Ser.	5	27-6	Str.			Longitudinal	S516	6	5	13-5	Str.			Curb
	of 16		35-9					S517	3	5	18-9	Str.			Curb
S504	24	5	6-0	Str.			Longitudinal	S518	234	5	13-10	Str.			Transverse
S505	3	5	19-0	Str.			Curb	S519	2 Ser.	5	3-6	Str.			Transverse
S506	6	5	13-8	Str.			Curb	of 11			11-6				
S507	3	5	12-5	Str.			Curb	S520	2 Ser.	5	3-7	Str.			Transverse
S408	297	4	5-8	164	0-6	1-8	Curb	of 14			11-9				
S609	32	6	3-6	Str.			Curb	S521	260	5	5-0	Str.			Transverse
S610	3	5	13-9	Str.			Curb	S522	2	5	15-3	128	12-9	7 3/4	Transverse
S511	3	5	15-0	Str.			Curb	S523	2	5	16-3	128	13-9	8 3/4	Transverse

Note: Place one bar at about 3" and one bar at about 6" from joints and remaining bars at about 12" ctrs. At bracket anchorages place one extra S408 between normally spaced bars and add one S609 bar as shown on sh. 16.

Note: See sh. 13 for details of Expansion Joints and Deflection Joint.

QUANTITIES

Reinforcing Steel	11,354 Lbs
Class A ₂ Max Concrete	591 Cu Yd
Structural Carbon Steel (A36)	1,308 Lbs



DECK SLAB REINFORCEMENT BRIDGE A BURLINGTON NORTHERN, INC RAILWAY UNDERPASSES

U.S. HIGHWAY NO. 10 MORTON COUNTY