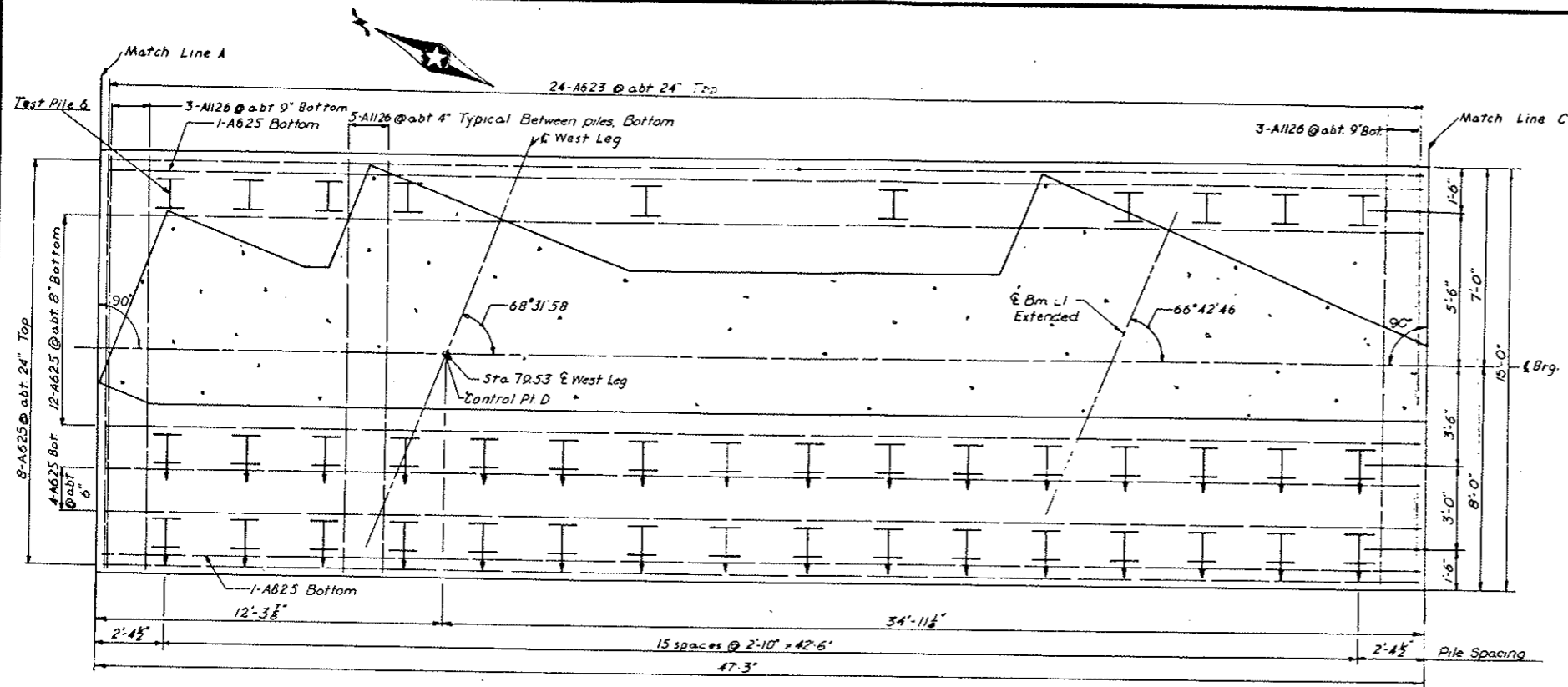
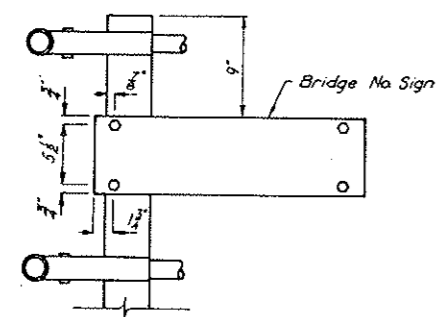


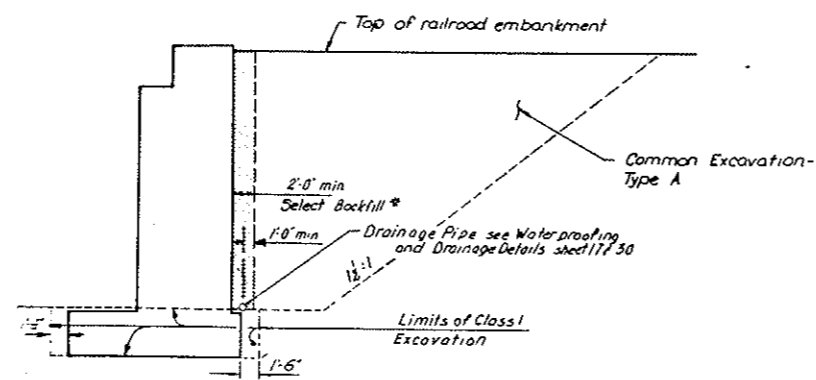
BRIDGE CODE	R.R. BRIDGE NO.	FED ROAD DIST NO.	STATE	PROJ NO	FISCAL YEAR	SHEET NO.	TOTAL SHEETS
X631	199	B	N D	MG-1-010 (OS) 917		25	



**FOOTING PLAN**  
Scale: 1/8" = 1'-0"



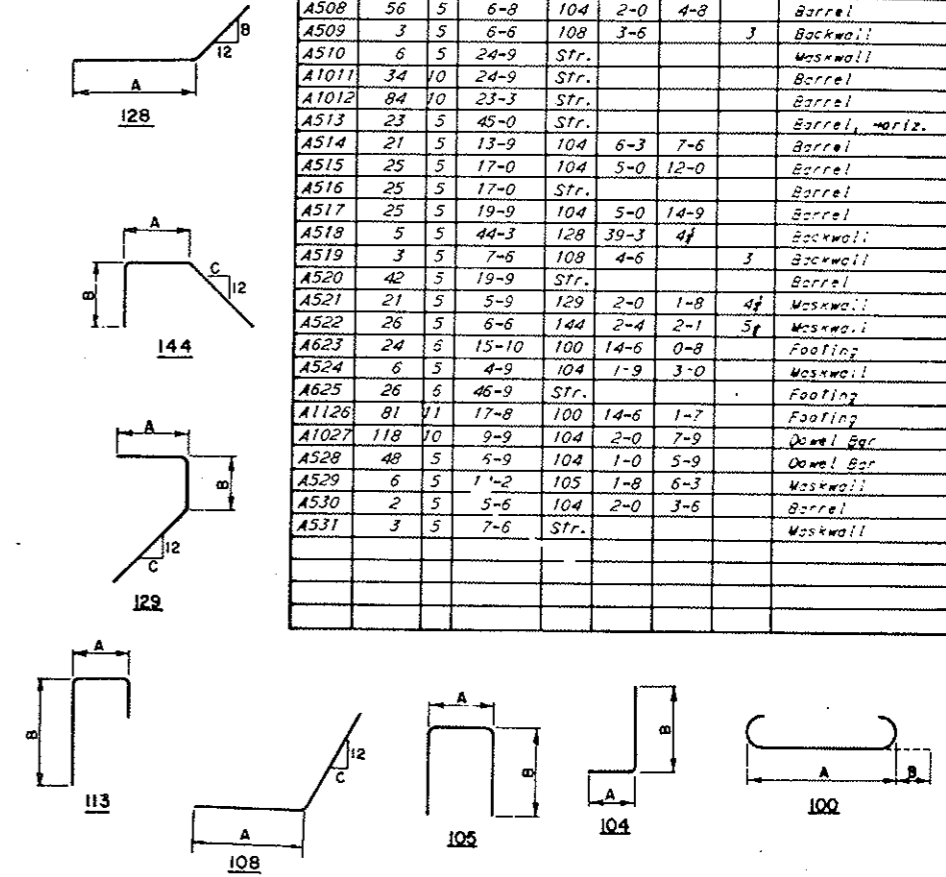
**DETAIL R**  
Scale: 1/2" = 1'-0"



**LIMITS OF CLASS I EXCAVATION AT ABUTMENTS**  
Scale: 1/8" = 1'-0"

\*Select Backfill to be included for payment under N.D.H.D. Spec. 228-4.2. Note that width of Select Backfill for payment varies from 2'-0" minimum to width as required to extend 1'-0" beyond drainpipe.

BILL OF REINFORCEMENT - ABUTMENT 1B									
BAR NO.	SIZE	LENGTH	TYPE	DIMENSIONS			LOCATION		
				A	B	C			
A501	1	5	6-3	Str.			Maskwall		
A502	3	5	11-0	113	1-7	7-0	Backwall		
A503	15	5	9-3	113	1-9	5-6	Backwall		
A504	1 Ser.	5	9-6	113	2-0	5-6	Backwall		
	of 9		12-7		5-1	5-6			
A505	1 Ser.	5	9-0	113	1-5	5-6	Backwall		
	of 10		12-8		5-1	5-6			
A506	4	5	10-2	113	1-0	7-0	Backwall		
A507	1	5	7-1	105	2-9	2-1	Maskwall		
A508	56	5	6-8	104	2-0	4-8	Barrel		
A509	3	5	6-6	108	3-6		3 Barrel		
A510	6	5	24-9	Str.			Maskwall		
A1011	34	10	24-9	Str.			Barrel		
A1012	84	10	23-3	Str.			Barrel		
A513	23	5	45-0	Str.			Barrel, horiz.		
A514	21	5	13-9	104	6-3	7-6	Barrel		
A515	25	5	17-0	104	5-0	12-0	Barrel		
A516	25	5	17-0	Str.			Barrel		
A517	25	5	19-9	104	5-0	14-9	Barrel		
A518	5	5	44-3	128	39-3	4 1/2	Backwall		
A519	3	5	7-6	108	4-6		3 Backwall		
A520	42	5	19-9	Str.			Barrel		
A521	21	5	5-9	129	2-0	1-8	4 1/2 Maskwall		
A522	26	5	6-6	144	2-4	2-1	5 1/2 Maskwall		
A623	24	5	15-10	100	14-6	0-8	Footing		
A524	6	5	4-9	104	1-9	3-0	Maskwall		
A625	26	6	46-9	Str.			Footing		
A1126	81	11	17-8	100	14-6	1-7	Footing		
A1027	118	10	9-9	104	2-0	7-9	Dowel Bar		
A528	48	5	5-9	104	1-0	5-9	Dowel Bar		
A529	6	5	1'-2	105	1-8	6-3	Maskwall		
A530	2	5	5-6	104	2-0	3-6	Barrel		
A531	3	5	7-6	Str.			Maskwall		



QUANTITIES	
Reinforcing Steel	32,697 lbs
Steel Piling (HP 12x53)	2,665 Lin Ft
Class AE-1 Mod Concrete	3264 Cu Yd
Class I Excavation	188 Cu Yd
Steel Test Piles (HP 2x53) @ 75' / Each	

**ABUTMENT 1B DETAILS**  
(SHEET 2 OF 2)  
BRIDGE B  
BURLINGTON NORTHERN, INC.  
RAILWAY UNDERPASSES

U.S. HIGHWAY NO. 10  
MORTON COUNTY