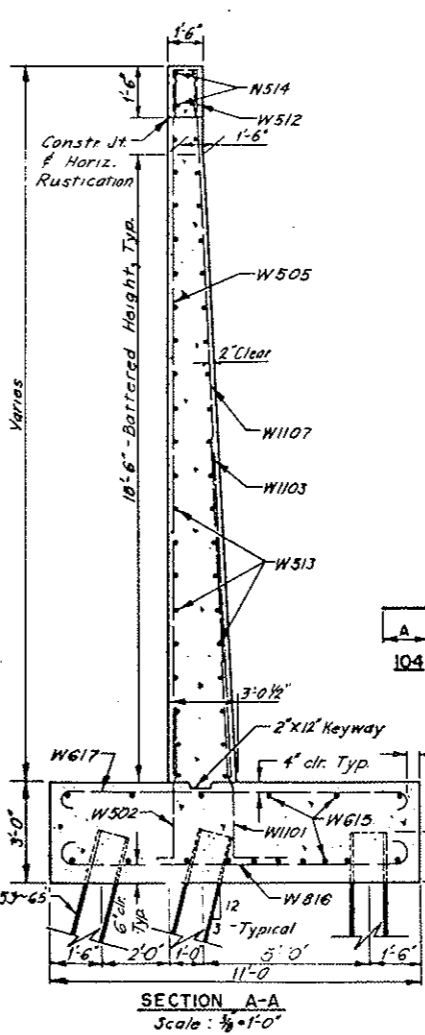
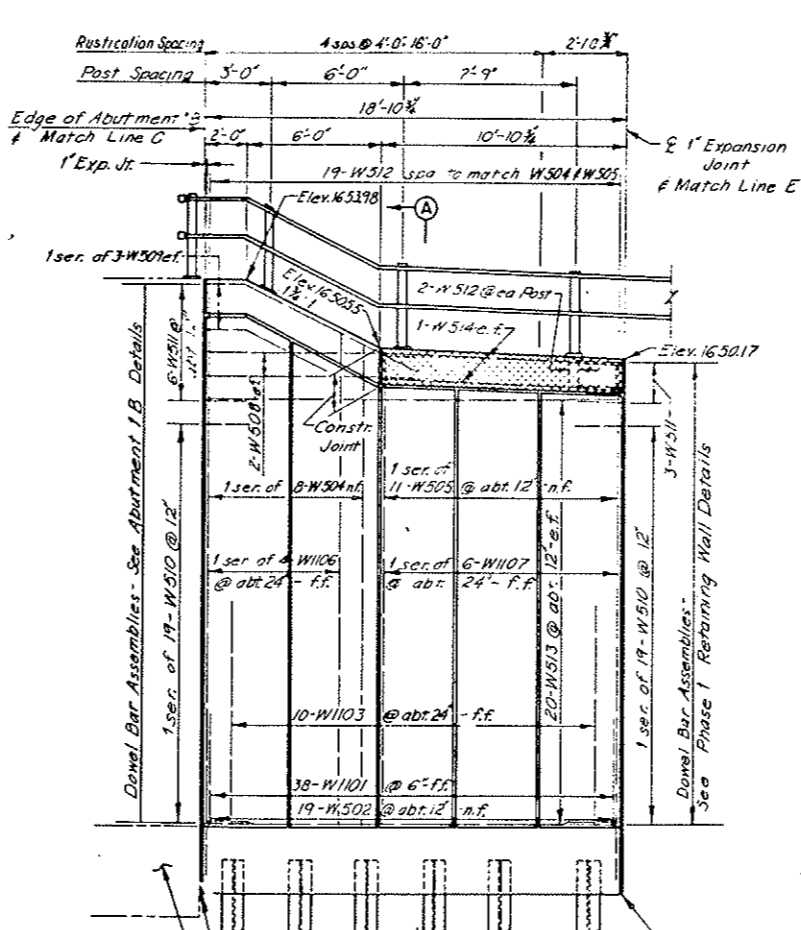
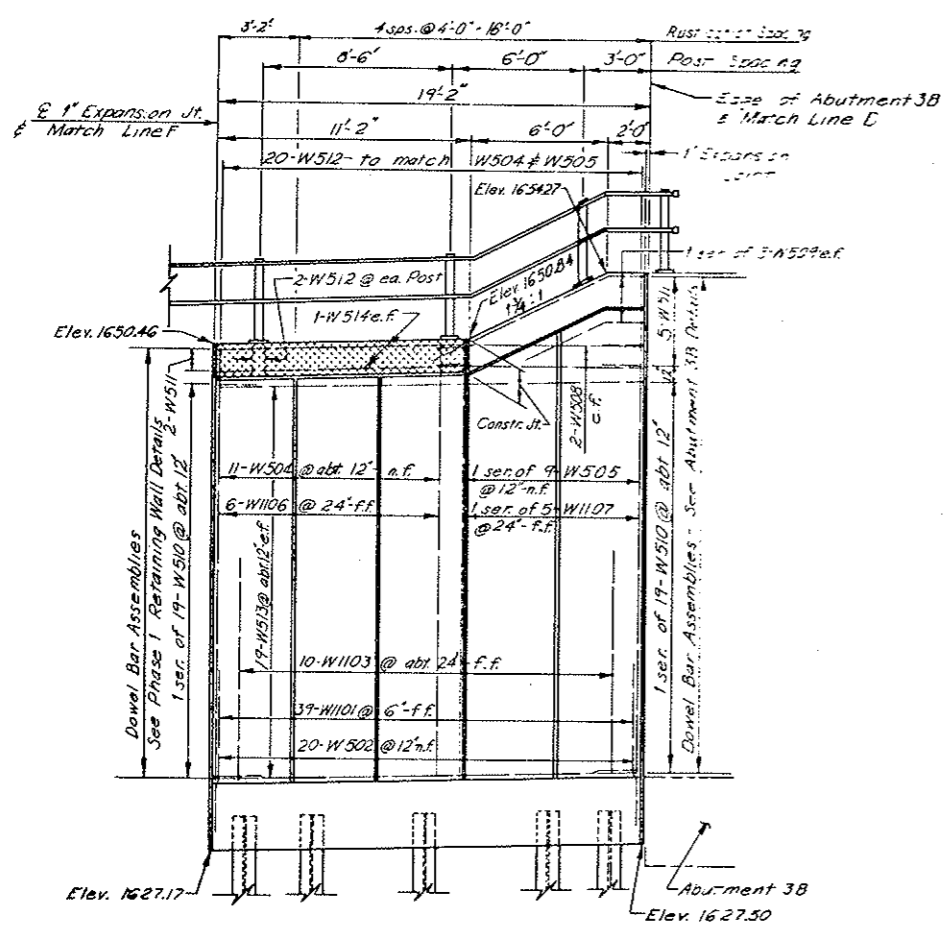
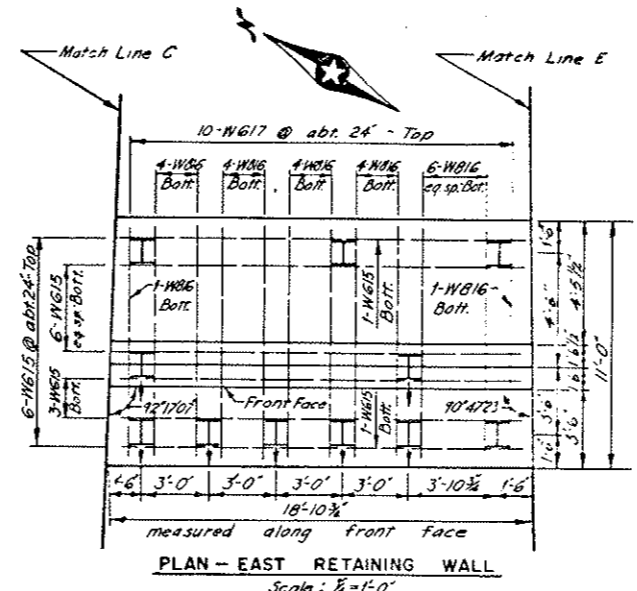
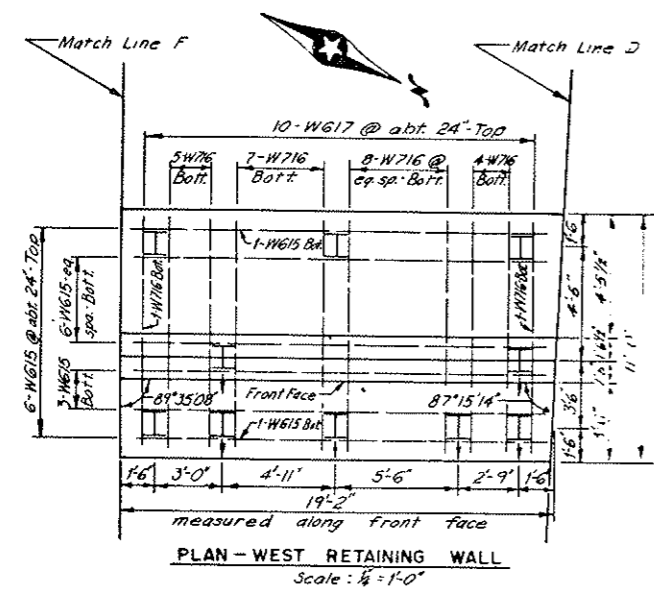
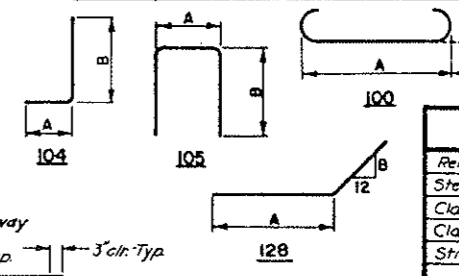


BRIDGE CODE	R.R. BRIDGE NO.	FED. ROAD DIST. NO.	STATE	PROJ. NO.	FISCAL YEAR	SHEET NO.	TOT. SHEETS
X631	199	B	ND	MG-1-010 LS9 917		47	



BILL OF REINFORCEMENT								
BAR NO.	NO.	SIZE	LENGTH	TYPE	DIMENSIONS			LOCATION
					A	B	C	
EAST RETAINING WALL								
W1101	38	11	9-0	104	1-8	7-4		Dowel
W502	19	5	5-6	104	1-0	4-5		Dowel
W1103	10	11	10-0	Str.				Vertical
W504	1 Ser.	5	21-10	Str.				Vertical
	of 8		24-10					
W505	1 Ser.	5	21-0	Str.				Vertical
	of 11		21-6					
W1106	1 Ser.	11	22-6	Str.				Vertical
	of 4		24-10					
W1107	1 Ser.	11	21-0	Str.				Vertical
	of 6		21-6					
W508	4	5	9-6	Str.				Horizontal
W509	2 Ser.	5	5-8	128	1-8	0-6		Horizontal
	of 3		9-8					
W510	2 Ser.	5	5-0	105	1-0	2-0		Stem Tie - Side
	of 19		6-5			2-5		
W511	9	5	5-0	105	1-0	2-0		Stem Tie - Side
W512	25	5	3-6	105	1-2	1-2		Stem Tie - Top
W513	40	5	18-4	Str.				Horizontal
W514	4	5	10-6	Str.				Horizontal
W515	17	6	18-4	Str.				Footing
W516	24	8	12-8	100	10-6	1-1		Footing
W517	10	6	11-10	100	10-5	0-8		Footing

WEST RETAINING WALL								
BAR NO.	NO.	SIZE	LENGTH	TYPE	DIMENSIONS			LOCATION
					A	B	C	
W1101	39	11	9-0	104	1-8	7-4		Dowel
W502	19	5	5-6	104	1-0	4-5		Dowel
W1103	10	11	10-0	Str.				Vertical
W504	11	5	19-10	Str.				Vertical
W505	1 Ser.	5	19-10	Str.				Vertical
	of 9		23-4					
W1106	6	11	19-10	Str.				Vertical
W1107	1 Ser.	11	9-10	Str.				Vertical
	of 5		23-11					
W508	4	5	9-6	Str.				Horizontal
W509	2 Ser.	5	5-8	128	1-8	0-6		Horizontal
	of 3		9-8					
W510	2 Ser.	5	5-0	105	1-0	2-0		Stem Tie - Side
	of 19		6-5			2-5		
W511	7	5	5-0	105	1-0	2-0		Stem Tie - Side
W512	26	5	3-6	105	1-2	1-2		Stem Tie - Top
W513	38	5	18-8	Str.				Horizontal
W514	4	5	10-10	Str.				Horizontal
W515	17	6	18-8	Str.				Footing
W516	26	7	12-2	100	10-5	0-10		Footing
W517	10	6	11-10	100	10-5	0-8		Footing



QUANTITIES	
Reinforcing Steel	13,456 lbs.
Steel Piling (HP 2x53)	1,365' Lin.
Class AE-1 Mag. Concrete	1130 Cu. Yd.
Class I Excavation	85 Cu. Yd.
Structural Carbon Steel (A36)	778 lbs.

PHASE II
RETAINING WALL DETAILS
BRIDGE B
BURLINGTON NORTHERN, INC
RAILWAY UNDERPASSES
U.S. HIGHWAY NO. 10
MORTON COUNTY