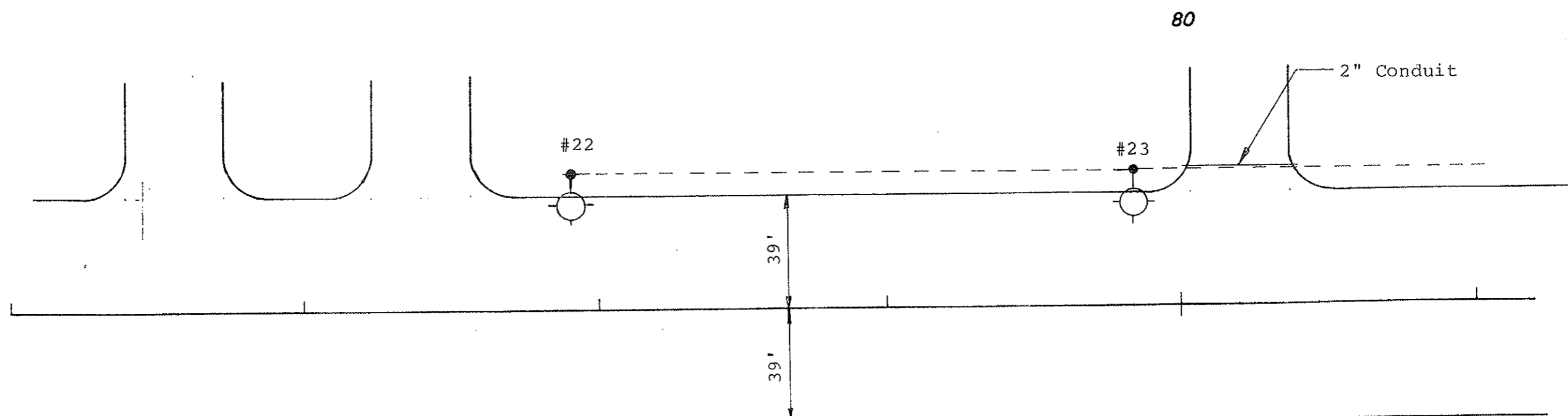


Install 2" Dia. Rigid Conduit

Sta. 79+95-41' Lt. to 80+45-41' Lt. 50 L.F.



SUMMARY OF QUANTITIES

	Cable Trench-Type II	Concrete Foundations-Highway Lighting	2" Dia. Rigid Conduit	Multiple Underground Conductor 3 No. 4, 1 No. 6, Style USE	Light Std., 6' M.A., 40' Mtg. Height-Breakaway-Festoon	Sodium Vapor Luminaire-400 Watt	Multiple Underground Conductor 3 No. 4, 1 No. 6, Style USE (City Funds only) *
	LF	Ea.	LF	LF	Ea.	Ea.	LF
TOTAL	256	2	50	238	2	2	80

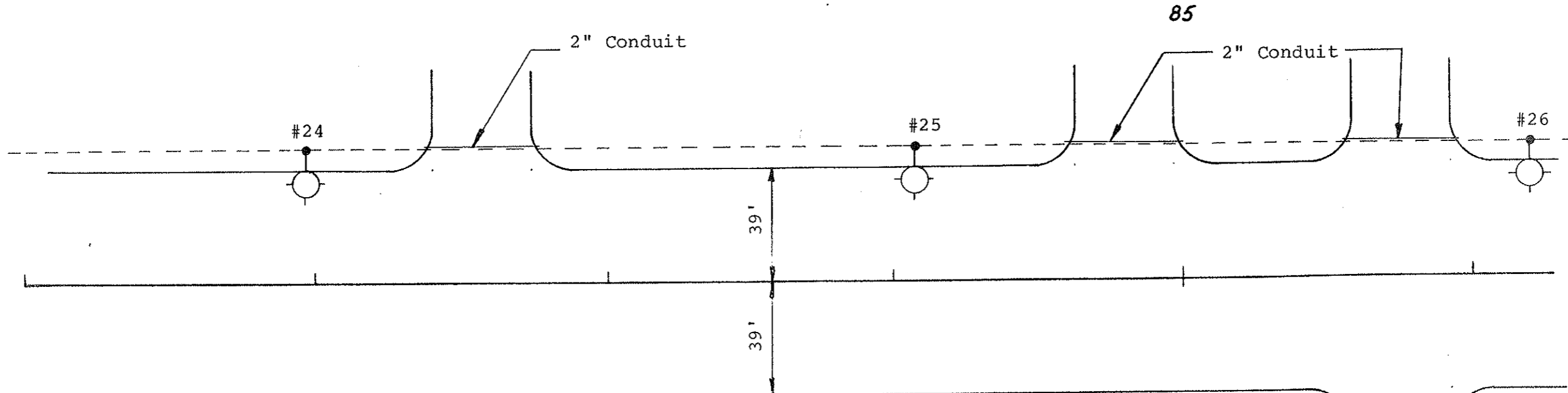
NO.	STATION	OFFSET	WATTAGE	CIRCUIT	IES TYPE
22	77+91	41' Lt.	400	B-1	M-S-III
23	79+85	41' Lt.	400	B-1	M-S-III

* Festoon Circuit

LIGHTING SYSTEM
The Mandan Strip Road
Mandan, N.D.

Install 2" Dia. Rigid Conduit

Sta. 82+32-41' Lt. to 82+82-41' Lt. 50 L.F.
 Sta. 84+55-41' Lt. to 85+05-41' Lt. 50 L.F.
 Sta. 85+50-41' Lt. to 86+00-41' Lt. 50 L.F.



SUMMARY OF QUANTITIES						
Cable Trench-Type II	Concrete Foundations-Highway Lighting	2" Dia. Rigid Conduit	Multiple Underground Conductor 3-No. 4, 1 No.-6 Style USE	Light Std., 6' M.A., 40' Mtg. Height-Breakaway-Festoon	Sodium Vapor Luminaire-400 Watt	Multiple Underground Conductor 3 No. 4, 1 No. 6 Style USE (City Funds only) *
LF	Ea.	LF	LF	Ea.	Ea.	LF
TOTAL	359	3	150	397	3	3

NO.	STATION	OFFSET	WATTAGE	CIRCUIT	IES TYPE
24	81+97	41' Lt.	400	B-1	M-S-III
25	84+09	41' Lt.	400	B-1	M-S-III
26	86+14	41' Lt.	400	B-1	M-S-III

* Festoon Circuit

LIGHTING SYSTEM
 The Mandan Strip Road
 Mandan, N.D.