

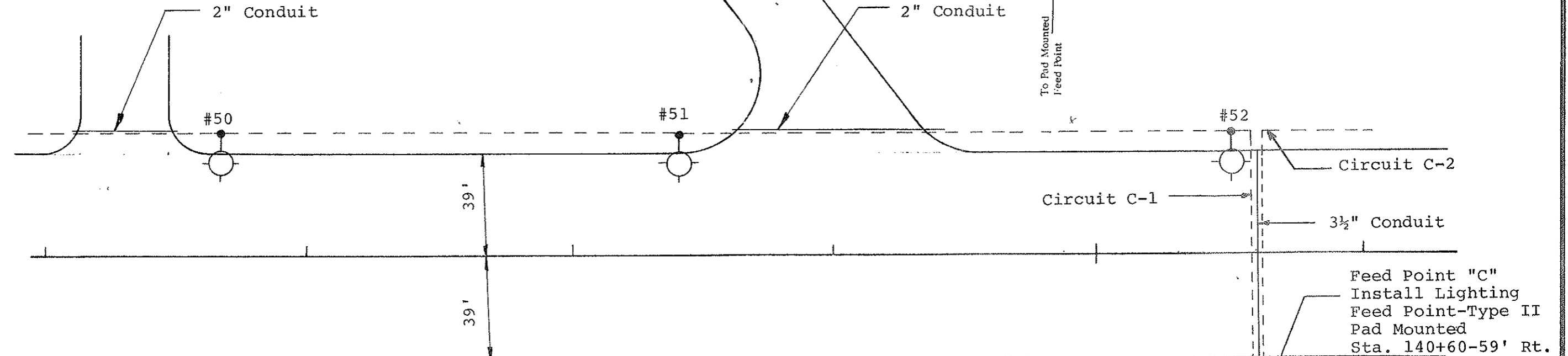
Install 2" Dia. Rigid Conduit

Sta. 136+05-41' Lt. to 136+55-41' Lt. 50 L.F.  
 Sta. 138+60-41' Lt. to 139+75-41' Lt. 115 L.F.  
 Sta. 140+31-139' Rt. to 140+60-59' Rt. 105 L.F. (a)

(a) Includes 20' to be Pole Mounted

Install 3½" Dia. Rigid Conduit

Sta. 140+60-39' Lt. to 140+60-39' Rt. 78 L.F.



Concrete Foundations Feed Point Pad-Type B		Feed Point - Type II Pad Mounted		3½" Dia. Rigid Conduit		Underground Conductor No. 4 Type RHW		Cable Trench-Type II		Concrete Foundations- Highway Lighting		2" Dia. Rigid Conduit		Multiple Underground Conductor, 3 No. 2, 1 No. 6, Style USE		Multiple Underground Conductor 3 No. 4, 1 No. 6, Style USE		Light Std., 6' M.A., 40' Mtg. Height-Breakaway-Festoon		Sodium Vapor Luminaire- 400 Watt		Multiple Underground Conductor 3 No. 2, 1 No. 6 Style USE (City Funds Only) *		Multiple Underground Conductor 3 No. 4, 1 No. 6 Style USE (City Funds Only) *			
Ea.	Ea.	LF	LF	LF	Ea.	LF	LF	LF	Ea.	LF	Ea.	LF	Ea.	LF	LF	Ea.	LF	Ea.	LF	Ea.	LF	LF	LF	LF	LF	LF	
1	1	78	348	351	3	270	501	52	3	3	167	18															

Totals

NO.	STATION	OFFSET	WATTAGE	CIRCUIT	IES TYPE
50	136+67	41' Lt.	400	C-1	M-S-III
51	138+40	41' Lt.	400	C-1	M-S-III
52	140+52	41' Lt.	400	C-1	M-S-III

Underground Conductor  
3 No. 4 Type RHW

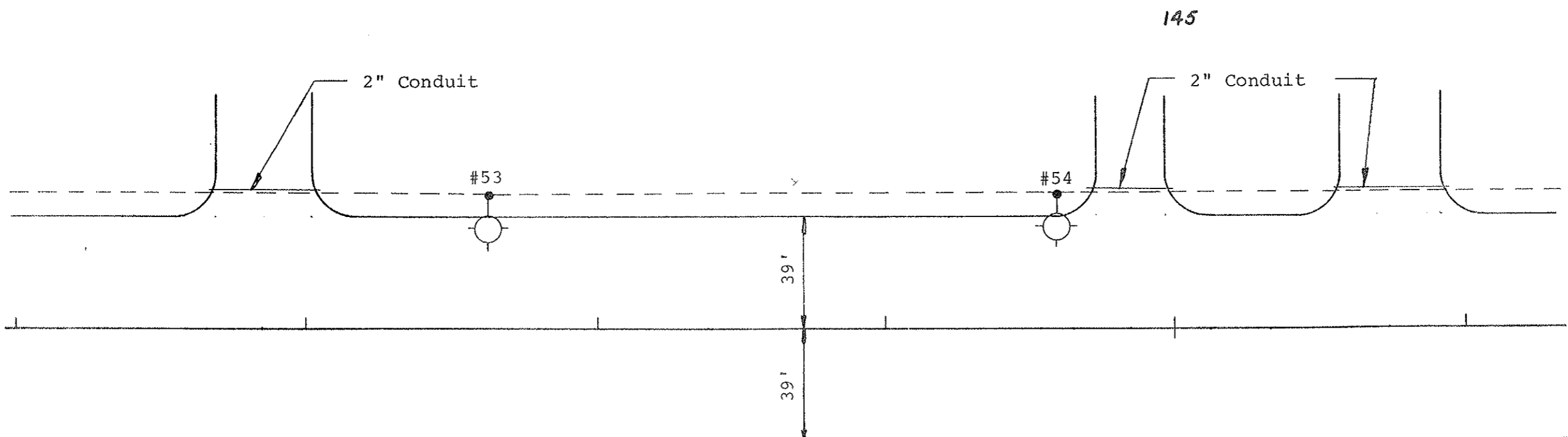
Existing Power Pole  
Sta. 140+31-139' Rt.  
(See Detail A)

\* Festoon Circuit

LIGHTING SYSTEM  
The Mandan Strip Road  
Mandan, N.D.

Install 2" Dia. Rigid Conduit

Sta. 141+60-41' Lt. to 142+10-41' Lt. 50 L.F.  
 Sta. 144+65-41' Lt. to 145+05-41' Lt. 40 L.F.  
 Sta. 145+49-41' Lt. to 145+99-41' Lt. 50 L.F.



SUMMARY OF QUANTITIES

	Cable Trench-Type II	Concrete Foundations-Highway Lighting	2" Dia. Rigid Conduit	Multiple Underground Conductor 3 No. 4, 1 No. 6, Style USE	Light Std., 6' M.A., 40' Mtg. Height-Breakaway-Festoon	Sodium Vapor Luminaire-400 Watt	Multiple Underground Conductor 3 No. 2, 1 No. 6 Style USE	Multiple Underground Conductor 3 No.2, 1 No. 6 Style USE (City Funds Only) *	Multiple Underground Conductor 3 No. 4, 1 No. 6 Style USE (City Funds Only) *
	LF	Ea.	LF	LF	Ea.	Ea.	LF	LF	LF
TOTAL	356	2	140	107	2	2	279	93	36

NO.	STATION	OFFSET	WATTAGE	CIRCUIT	IES TYPE
53	142+64	41' Lt.	400	C-2	M-S-III
54	144+60	41' Lt.	400	C-2	M-S-III

\* Festoon Circuit

LIGHTING SYSTEM  
 The Mandan Strip Road  
 Mandan, N.D.