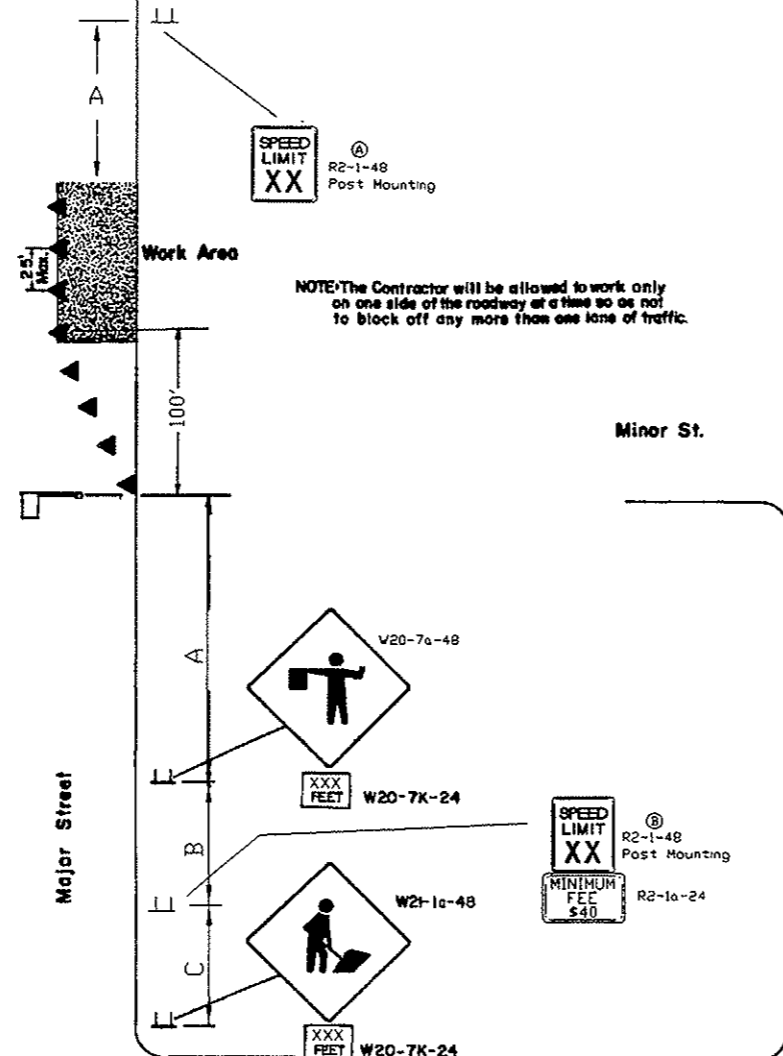
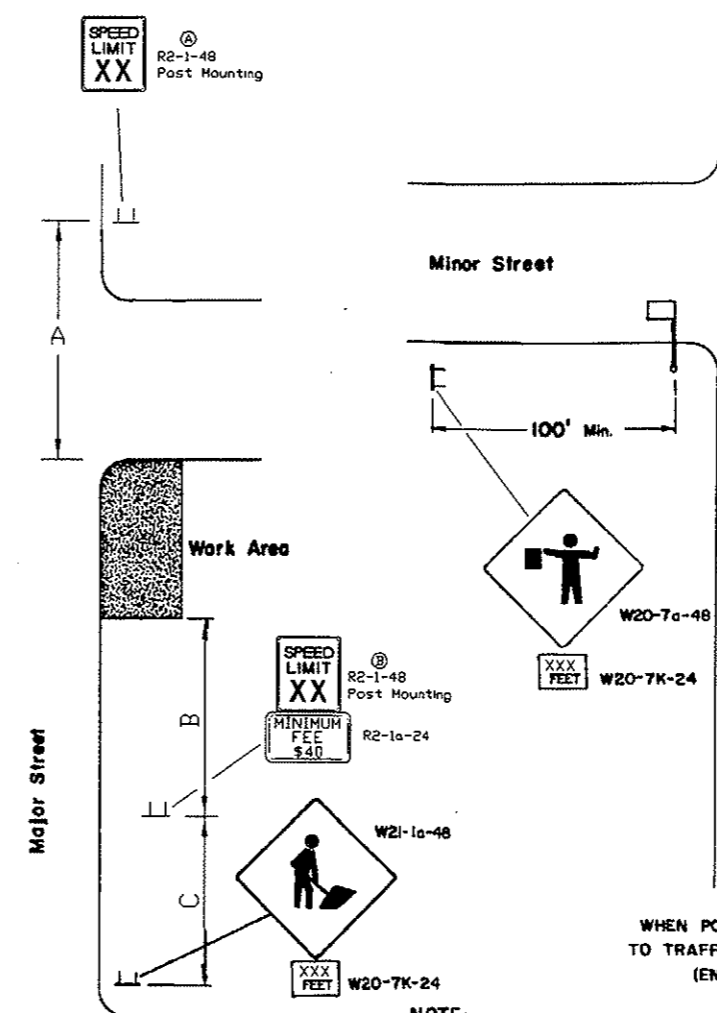


# CONSTRUCTION SIGN AND BARRICADE LOCATION DETAILS

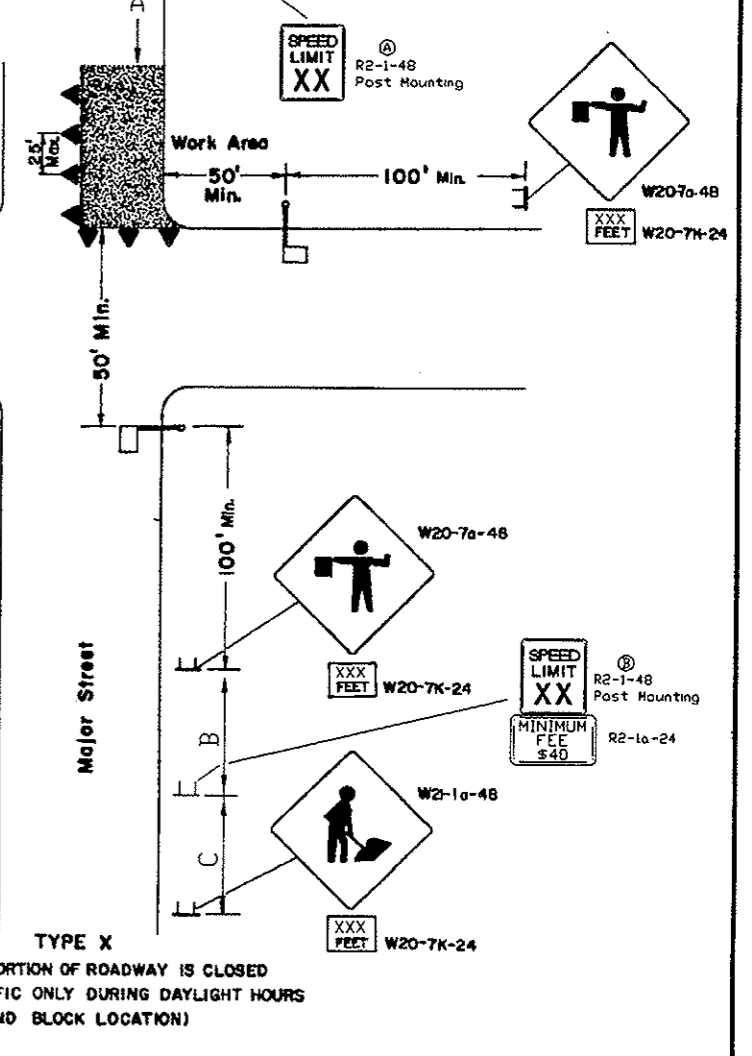
D-704-25



**TYPE V**  
WHEN PORTION OF ROADWAY IS CLOSED TO TRAFFIC ONLY DURING DAYLIGHT HOURS (MID BLOCK LOCATION)



**TYPE W**  
WHEN WORK AREA IS OUTSIDE OF DRIVING LANE AND NO CLOSURE IS NECESSARY



NOTE:

Where parking is present the signs shall be placed so they are entirely visible above the parked vehicles or placed at the edge of the parking area so they are visible to oncoming traffic.

Flags: When warning signs are in urban areas, flags shall be installed. These flags shall be 24 inch square mounted perpendicular to the edges of the diamond sign and at such a distance above the edge so that when flag is limp it will not touch the sign. Portable warning signs will not require flags. Rural areas will not require flags.

Mounting- Signs shown to be placed on the roadway shall be placed on moveable assemblies.

- (A) The speed limit shall be re-established the exact speed limit shall be determined in the field dependent on location and conditions.
- (B) The speed limit shall be determined by the engineer in the field.

| Road type                                             | ADVANCE WARNING SIGN SPACING |      |      |
|-------------------------------------------------------|------------------------------|------|------|
|                                                       | Distance between signs (ft)  |      |      |
|                                                       | A                            | B    | C    |
| Urban - low speed (less than 40 mph)                  | 200                          | 200  | 200  |
| Urban - high speed (40 mph or more)                   | 350                          | 350  | 350  |
| Rural                                                 | 500                          | 500  | 500  |
| Interstate/4-lane divided (Maintenance and surveying) | 750                          | 1000 | 1500 |
| Interstate/4-lane divided (Construction)              | 1000                         | 1600 | 2600 |

**KEY**

- Cones
- Flagger
- Signs
- Work Area

| 13-1-8E REVISIONS |                    |
|-------------------|--------------------|
| DATE              | CHANGE             |
| 8-3-87            | NOTE               |
| 5-1-92            | GENERAL REVISIONS  |
| 9-30-93           | GENERAL REVISIONS  |
| 6-19-95           | SPEED LIMIT        |
| 8-15-96           | REVISION FLAG NOTE |
| 9-3-96            | 70 MPH             |
| 1-31-97           | SIGN SPACING       |

NORTH DAKOTA DEPARTMENT OF TRANSPORTATION  
APPROVED: *David R. L...*  
DESIGN ENGINEER

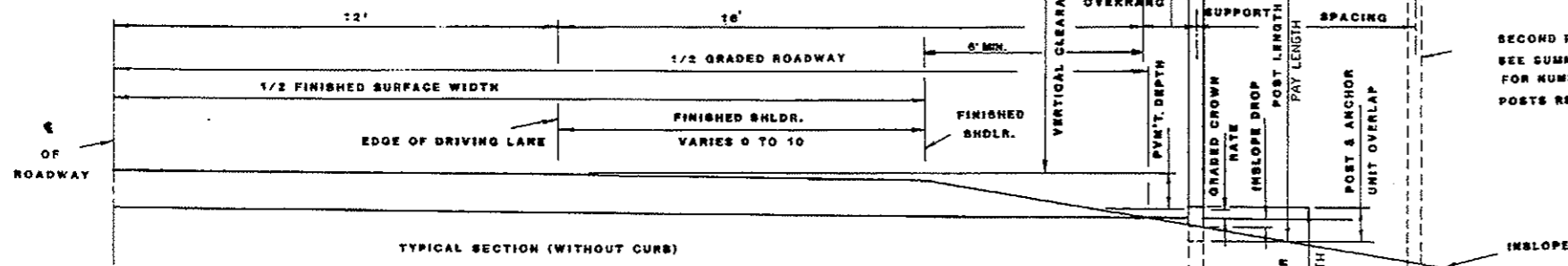
ASSEMBLY DETAILS

MINIMUM HORIZONTAL CLEARANCE

THE 16' CLEARANCE FROM THE EDGE OF THE DRIVING LANE TO THE EDGE OF THE SIGN SHALL BE FOR ALL ROADWAYS WITHOUT CURBS. ALL CURBED ROADWAYS SHALL HAVE 3' HORIZONTAL CLEARANCE FROM THE FACE OF THE CURB TO THE EDGE OF THE SIGN UNLESS NOTED OTHERWISE ON THE PLANS. ALL BIKE ROUTE SHALL HAVE A 5' MINIMUM HORIZONTAL CLEARANCE FROM THE EDGE OF THE BIKE ROUTE TO THE EDGE OF THE SIGN.

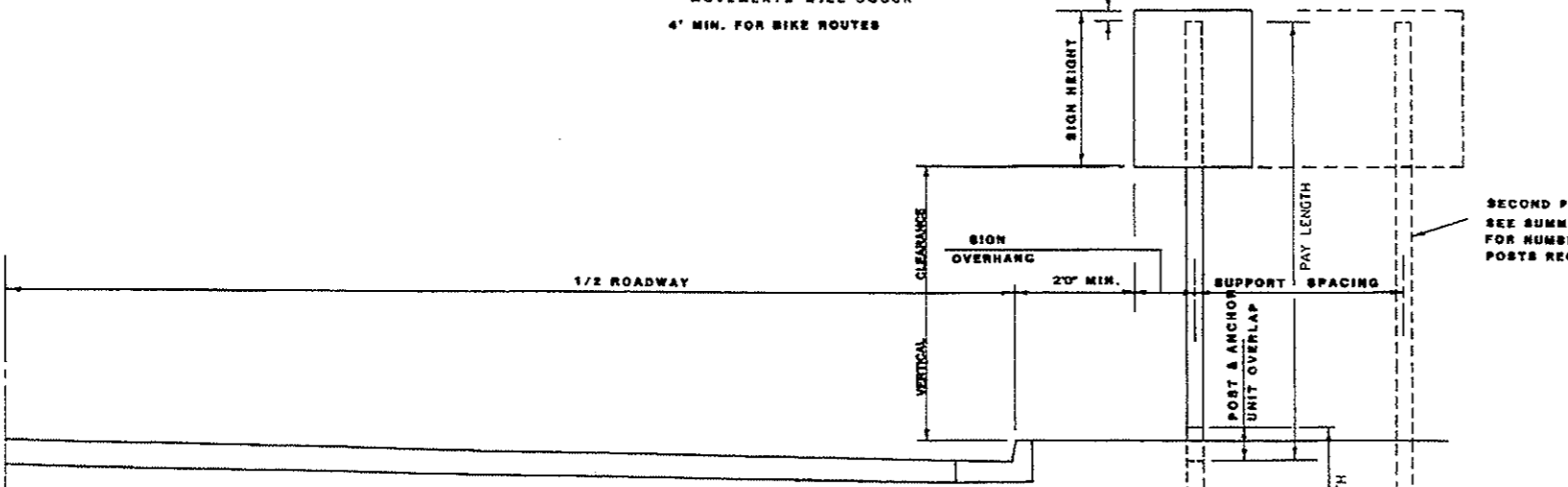
MINIMUM VERTICAL CLEARANCE

5' RURAL ROADWAYS  
6' ON RURAL OR URBAN EXPRESSWAYS  
7' ON FREEWAYS



TYPICAL SECTION (WITHOUT CURB)

MINIMUM VERTICAL CLEARANCE  
6' URBAN EXPRESSWAYS  
7' IN RESIDENTIAL AND BUSINESS DISTRICTS WHERE PARKING AND / OR PEDESTRIAN MOVEMENTS WILL OCCUR  
4' MIN. FOR BIKE ROUTES



TYPICAL SECTION (WITH CURB)

NOTE  
PAVEMENT DEPTH-THE PAVEMENT DEPTH USED TO DEVELOP SUMMARY SHEETS SHOULD BE THE ULTIMATE PAVEMENT DEPTH.  
SEE PLANS FOR SIGN NUMBERS AND ASSEMBLY NUMBERS.  
SIGN PUNCHING AND STRINGERS SHALL BE AS SHOWN ON STANDARDS.  
HORIZONTAL CLEARANCE:  
THE POST LENGTHS HAVE BEEN COMPUTED USING A HORIZONTAL CLEARANCE OF 16 FEET BETWEEN THE EDGE OF THE DRIVING LANE AND THE EDGE OF THE SIGN.  
FOR AN ULTIMATE SHOULDER WIDTH OF 10 FEET, THE DISTRICTS HAVE THE OPTION OF BETTING THE SIGNS OUT TO 18 FEET CLEARANCE.  
IF THE CLEARANCE IS TO BE INCREASED TO 18 FEET, THE NECESSARY ADJUSTMENT IN SUPPORT LENGTH SHALL BE MADE IN THE FIELD.

| 10-1-88 REVISIONS |                             |
|-------------------|-----------------------------|
| DATE              | CHANGE                      |
| 8-1-88            | FREEWAYS                    |
| 9-4-90            | MIN. OVERHANG FROM SHOULDER |
| 5-1-92            | GENERAL REVISIONS           |
| 9-3-92            | MIN. CLEARANCE              |
| 9-8-95            | PAY LENGTH                  |

NORTH DAKOTA DEPARTMENT OF TRANSPORTATION  
APPROVED: *[Signature]*  
Design Engineer