

PAVEMENT & STREET LIGHT IMPROVEMENTS

PROJECT # 2006-25

TRAIL WEST ADDITION MANDAN, NORTH DAKOTA

DESIGN ENGINEER'S CERTIFICATE

I, BRANT P. MALSAM, PE, A REGISTERED PROFESSIONAL ENGINEER OF THE STATE OF NORTH DAKOTA, CERTIFY THAT THE PLANS FOR PAVEMENT AND STREET LIGHT IMPROVEMENTS PROJECT 2006-25, MANDAN, NORTH DAKOTA WERE PREPARED UNDER MY SUPERVISION AND ARE COMPLETE AND CORRECT TO THE BEST OF MY KNOWLEDGE AND BELIEF.

BRANT P. MALSAM, PE
REGISTERED PROFESSIONAL ENGINEER
NORTH DAKOTA REGISTRATION NO. 2847

I, JOHN M. KLEIN, PE, A REGISTERED PROFESSIONAL ENGINEER OF THE STATE OF NORTH DAKOTA, CERTIFY THAT THE PLANS FOR PAVEMENT AND STREET LIGHT IMPROVEMENTS PROJECT 2006-25, MANDAN, NORTH DAKOTA WERE PREPARED UNDER MY SUPERVISION AND ARE COMPLETE AND CORRECT TO THE BEST OF MY KNOWLEDGE AND BELIEF.

JOHN M. KLEIN, PE
REGISTERED PROFESSIONAL ENGINEER
NORTH DAKOTA REGISTRATION NO. 4522

APPROVAL OF THE CITY ENGINEER

I, THOMAS R. LITTLE, PE, CITY ENGINEER FOR THE CITY OF MANDAN, NORTH DAKOTA, HEREBY APPROVE THESE PLANS FOR PAVEMENT AND STREET LIGHT IMPROVEMENTS PROJECT 2006-25, MANDAN, NORTH DAKOTA AS SHOWN ON THE ACCOMPANYING PLANS.

THOMAS R. LITTLE, PE
REGISTERED PROFESSIONAL ENGINEER
CITY ENGINEER
MANDAN, NORTH DAKOTA

DESIGN ENGINEER
ULTEIG ENGINEERS, INC.

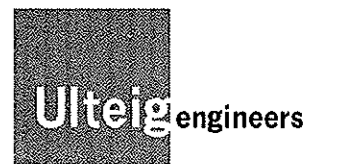
RECORD DRAWING

I hereby certify that this plan, specification or report was prepared by me or under my direct supervision and that I am a duly Licensed Professional Engineer under the laws of the State of North Dakota.

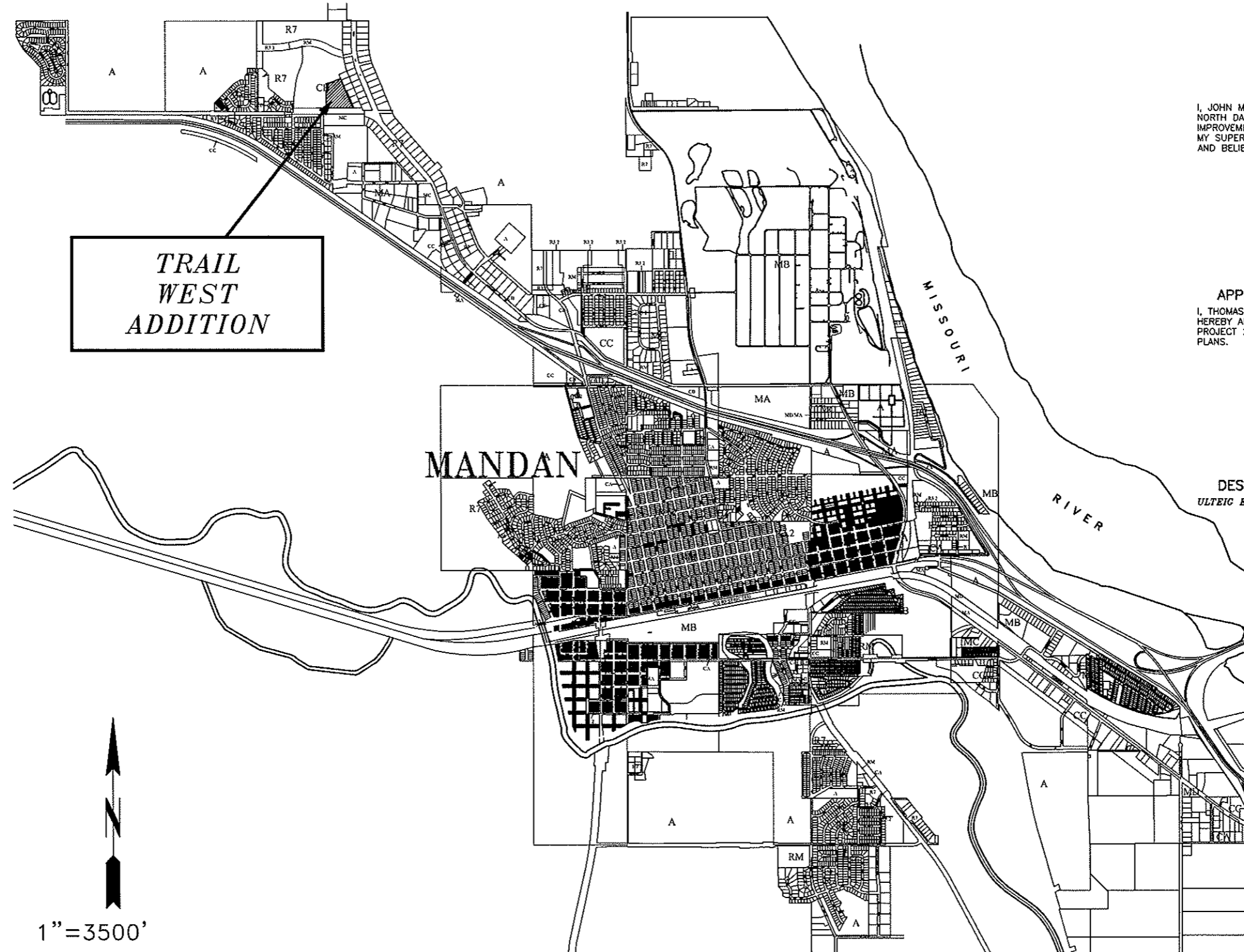
Print Name: Name

Signed: _____

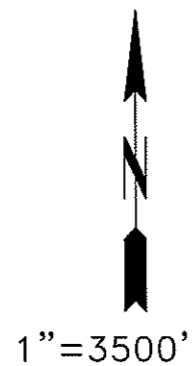
Date: 04/27/06 License Number: 2847



Bismarck - Detroit Lakes - Fargo - Minneapolis - Sioux Falls
1412 Basin Avenue
Bismarck, North Dakota 58504
Phone: 701.258.6507 Fax: 701.224.1163
Web: www.ulteig.com



TRAIL
WEST
ADDITION



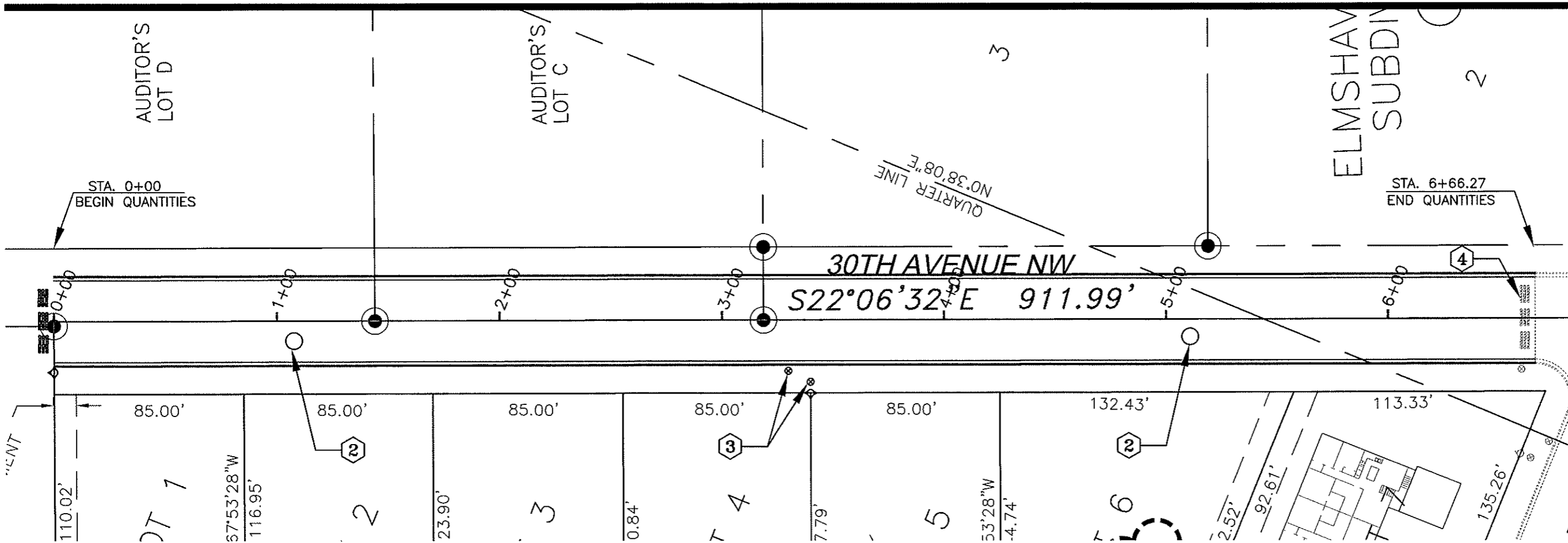
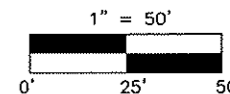
LOCATION MAP

**TRAIL WEST
ADDITION**

MANDAN, ND

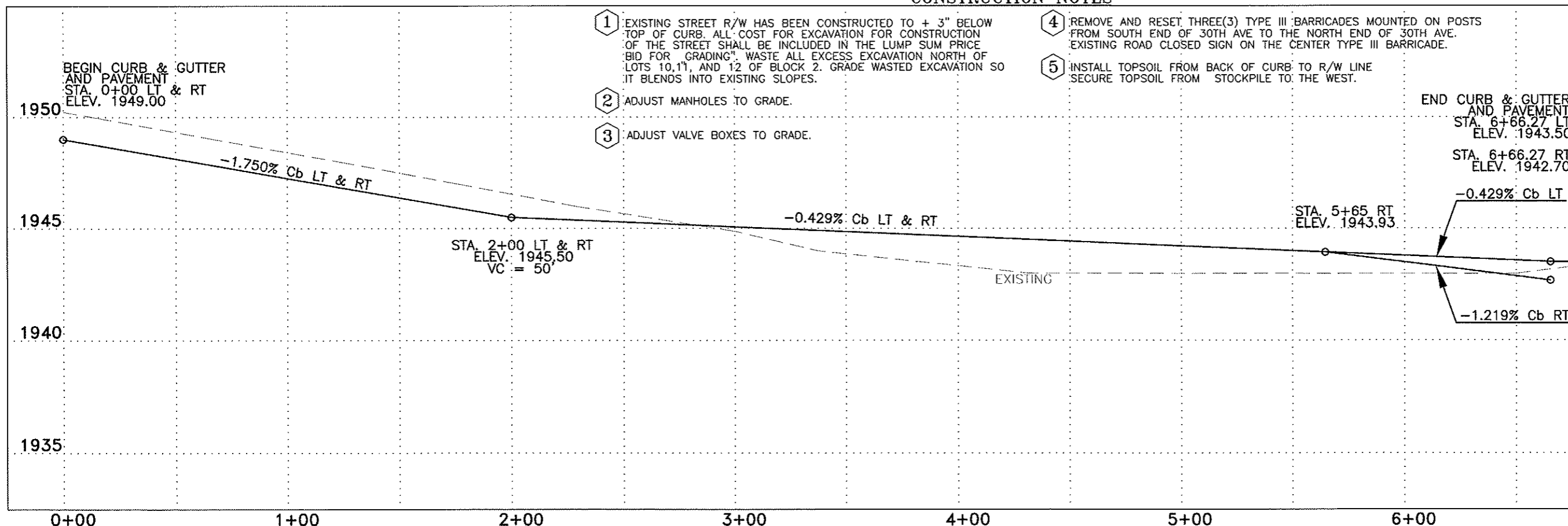
Revision	Date	Number	By
1	00/00/00		

PLAN NOTES OR GENERAL NOTES

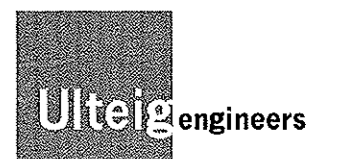


CONSTRUCTION NOTES

- 1. EXISTING STREET R/W HAS BEEN CONSTRUCTED TO + 3" BELOW TOP OF CURB. ALL COST FOR EXCAVATION FOR CONSTRUCTION OF THE STREET SHALL BE INCLUDED IN THE LUMP SUM PRICE BID FOR "GRADING". WASTE ALL EXCESS EXCAVATION NORTH OF LOTS 10, 11, AND 12 OF BLOCK 2. GRADE WASTED EXCAVATION SO IT BLENDS INTO EXISTING SLOPES.
- 2. ADJUST MANHOLES TO GRADE.
- 3. ADJUST VALVE BOXES TO GRADE.
- 4. REMOVE AND RESET THREE(3) TYPE III BARRICADES MOUNTED ON POSTS FROM SOUTH END OF 30TH AVE TO THE NORTH END OF 30TH AVE. EXISTING ROAD CLOSED SIGN ON THE CENTER TYPE III BARRICADE.
- 5. INSTALL TOPSOIL FROM BACK OF CURB TO R/W LINE. SECURE TOPSOIL FROM STOCKPILE TO THE WEST.



RECORD DRAWING



Bismarck - Detroit Lakes - Fargo - Minneapolis - Sioux Falls
1412 Basin Avenue
Bismarck, North Dakota 58504
Phone: 701.258.6507 Fax: 701.224.1163
Web: www.ulteig.com
Drawn By: NHK
Checked By: BPM
Approved By: BPM

**PAVEMENT AND
STREET LIGHT
IMPROVEMENTS**

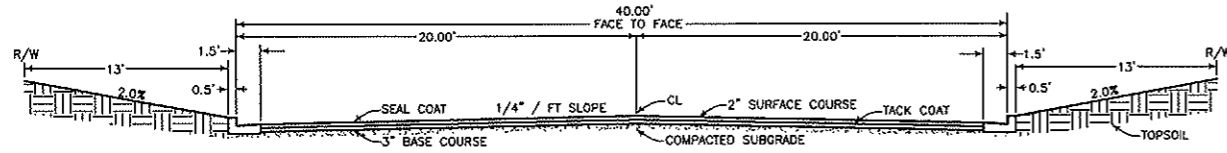
Project Number: 306.081
Date: April 27, 2008
Sheets: 1 of 1

**TRAIL WEST
ADDITION**

MANDAN, ND

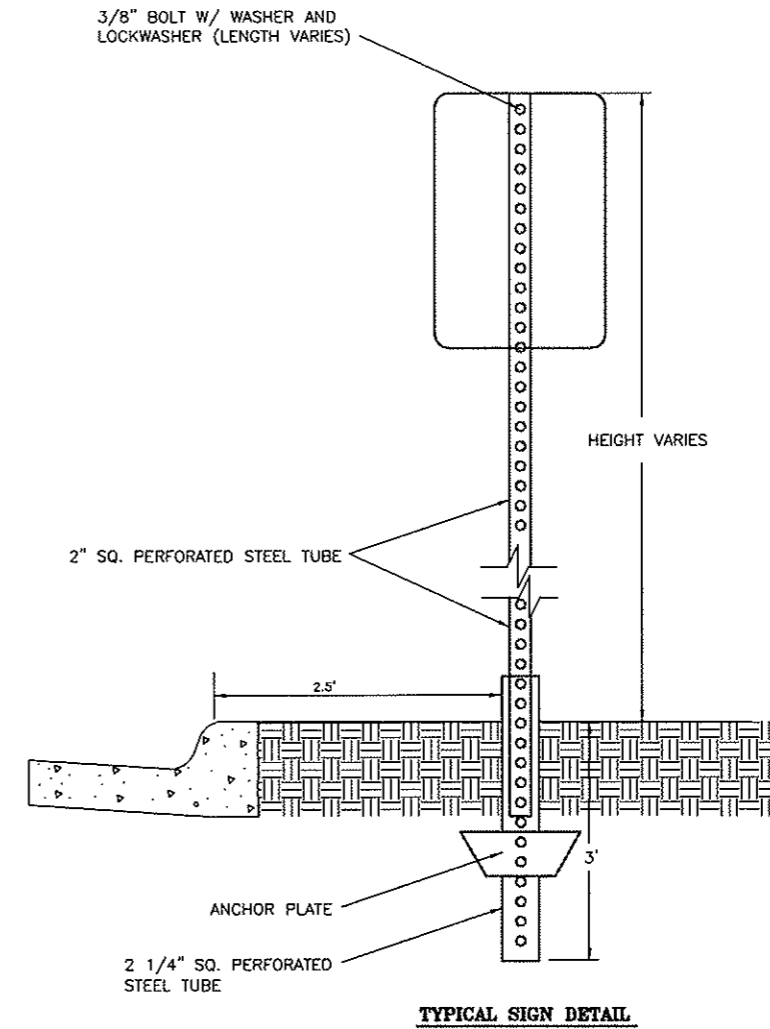
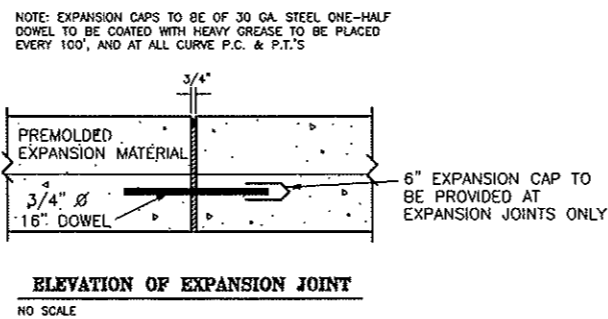
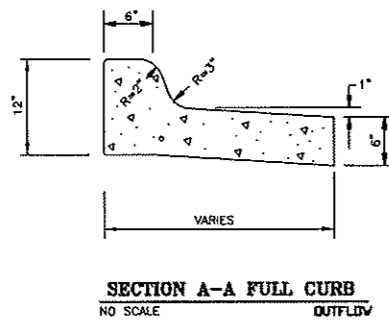
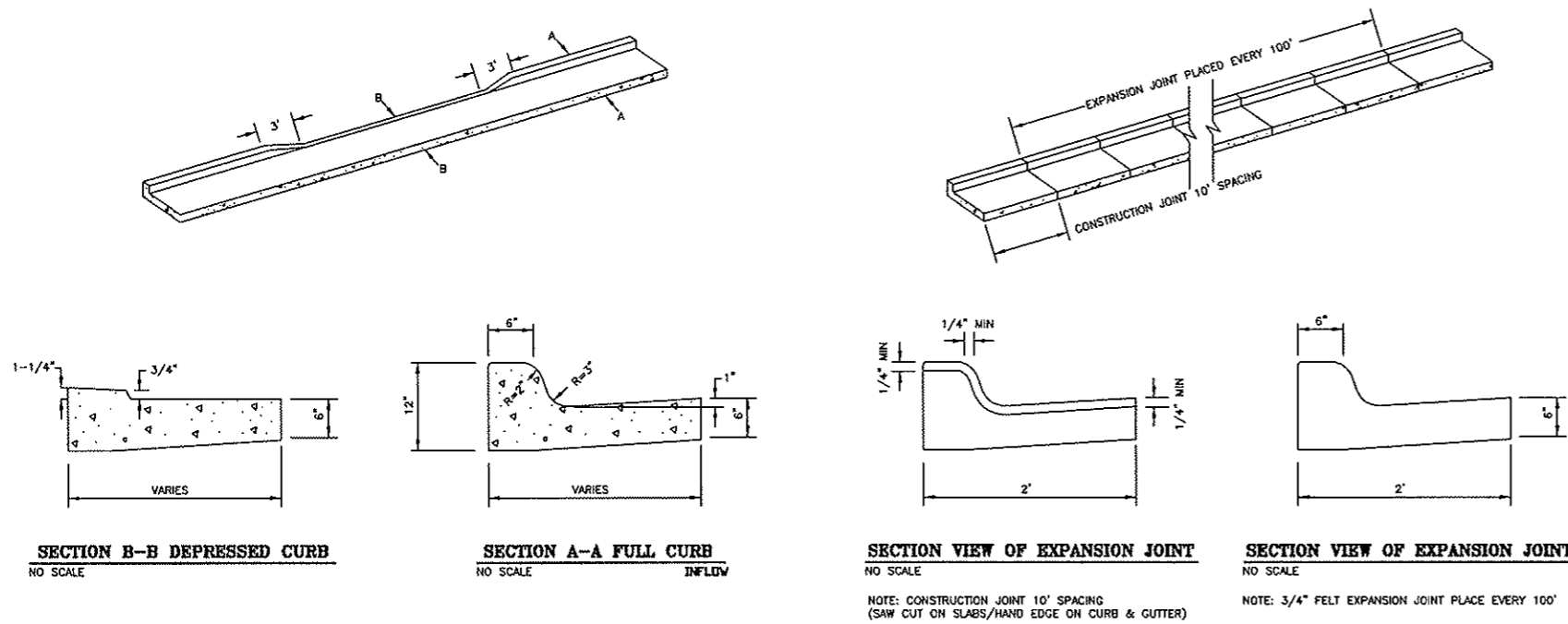
Revision	Date	Number	By
1	00/00/00	-	-

PLAN NOTES OR GENERAL NOTES

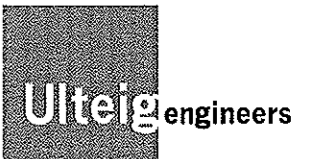


TYPICAL STREET SECTIONS
NO SCALE

STANDARD CURB & GUTTER DETAILS



RECORD DRAWING



Bismarck - Detroit Lakes - Fargo - Minneapolis - Sioux Falls
1412 Basin Avenue
Bismarck, North Dakota 58504
Phone: 701.258.6507 Fax: 701.224.1163
Web: www.ulteig.com
Drawn By: NHK
Checked By: BPM
Approved By: BPM

DETAILS

Project Number: 306.081
Date: April 27, 2006
Sheets: 1 of 1

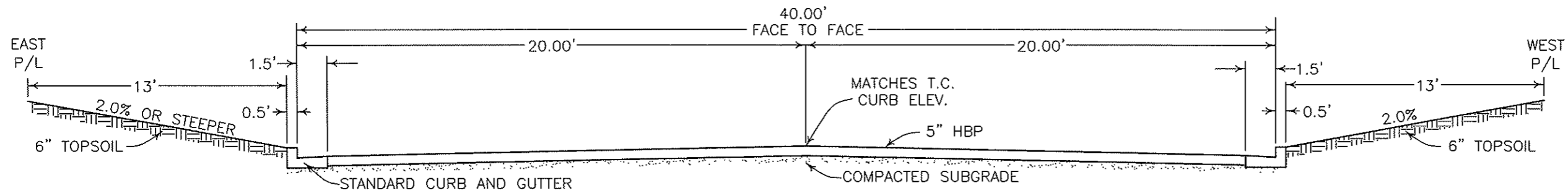
D1

**TRAIL WEST
ADDITION**

MANDAN, ND

Revision	Date	Number	By
△	00/00/00	-	-

PLAN NOTES OR GENERAL NOTES



ROADWAY GRADING DETAIL

NOT TO SCALE

NOTE: ALONG EAST P/L IF THE EXISTING GROUND IS BELOW THE TOP OF CURB ELEVATION, THOSE AREAS SHALL BE FILLED WITH TOPSOIL. SEE SHEET C3.

NOTE: WITHIN THE LIMITS OF CURB AND GUTTER GRADE TO 4" BELOW FINAL ELEVATION. ALL OTHER AREAS GRADED TO 6" BELOW FINISH GRADE.

RECORD DRAWING



Bismarck - Detroit Lakes - Fargo - Minneapolis - Sioux Falls
 1412 Basin Avenue
 Bismarck, North Dakota 58504
 Phone: 701.258.6507 Fax: 701.224.1163
 Web: www.ulteig.com
 Drawn By: NIK
 Checked By: BPM
 Approved By: BPM

ROADWAY
GRADING DETAILS

Project Number: 306.081
 Date: May 5, 2006
 Sheets: 4 of 4

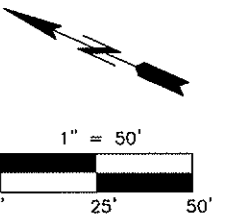
D1

**TRAIL WEST
ADDITION**

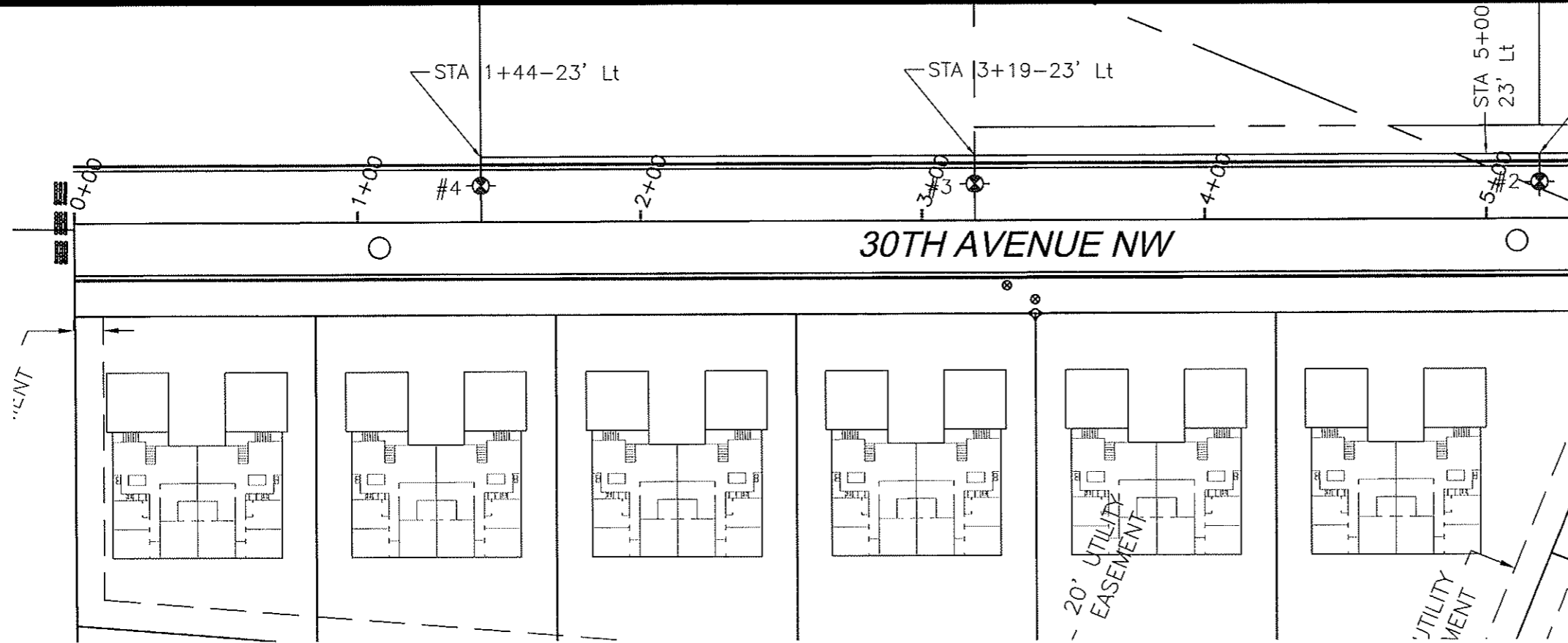
MANDAN, ND

Revision	Date	Number	By
△	00/00/00		

PLAN NOTES OR GENERAL NOTES



RECORD DRAWING



LIGHTING PLAN
1" = 50'-0"

CONDUIT/CONDUCTOR RUN TABULATION

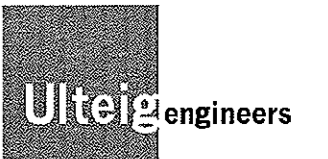
STATION No.	TO	STATION No.	CONDUIT RUNS		LENGTH OF CABLE TRENCH	UNDERGROUND CIRCUIT RUNS			
			LENGTH	SIZE		PHASE CONDUCTORS		GROUND CONDUCTORS	
						TOTAL CONDUCTOR LENGTH	CONDUCTOR SIZE, TYPE & QUANTITY	TOTAL CONDUCTOR LENGTH	CONDUCTOR SIZE, TYPE & QUANTITY
5+00-23.0' Lt.		3+19-23.0' Lt.	--	--	181'	555'	(3) #4 RHW	185'	(1) #6 RHW
3+19-23.0' Lt.		1+44-23.0' Lt.	--	--	175'	549'	(3) #4 RHW	183'	(1) #6 RHW

QUANTITY TABULATION

DESCRIPTION	UNIT	LF.	EA.	EA.
UNDERGROUND CIRCUITRY (120/240 VOLT)		368'		
TYPE A LIGHT STANDARD -- 6 FT. M.A. 27 FT. MOUNTING HT.			2	
TYPE A LUMINAIRE -- HP SODIUM VAPOR 150 WATT				2

LIGHT STANDARD TABULATION

POLE No.	STATION	OFFSET	WATTAGE	CIRCUIT	IES TYPE	POLE HT.	MAST ARM
4	1+44	23.0' Lt.	150	--	III	27'	6'
3	3+19	23.0' Lt.	150	--	III	27'	6'



Bismarck - Detroit Lakes - Fargo - Minneapolis - Sioux Falls
1412 Basin Avenue
Bismarck, North Dakota 58504
Phone: 701.258.6507 Fax: 701.224.1163
Web: www.ulteig.com
Drawn By: NHK
Checked By: JMK
Approved By: BPM

**PAVEMENT AND
STREET LIGHT
IMPROVEMENTS**

Project Number: 306,081
Date: May 22, 2006
Sheets: 1 of 2

E2