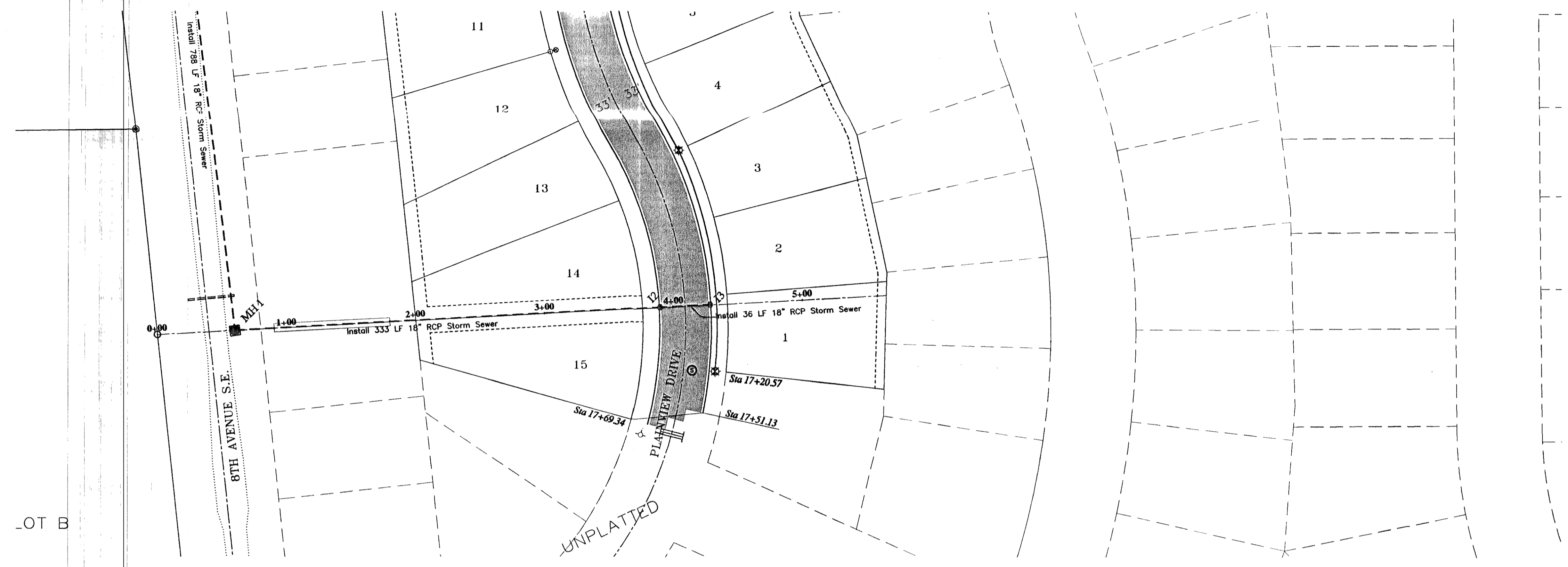


STORM MH #1 TYPE 48  
STA 0+58.26, 0.2' LT

INLET #2 TYPE A  
STA 3+91.01, 0.3' LT

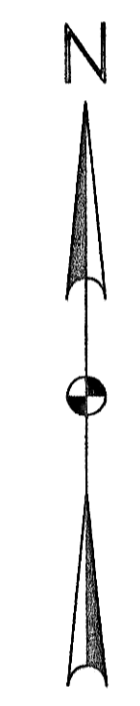
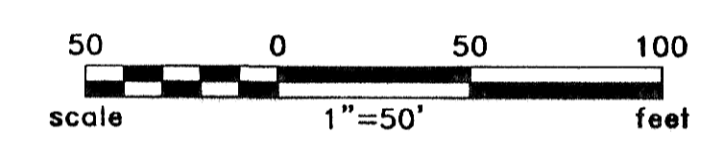
INLET #3 TYPE A  
STA 4+27.01, 0.4' LT



**CONSTRUCTION NOTES**

- CONTRACTOR SHALL USE EXCESS EXCAVATION MATERIALS ONSITE TO BACKFILL EXPOSED STORM SEWER IN FORMER DETENTION POND AREA. SEE DETAIL SHEET 2.
- CONTRACTOR SHALL USE CARE AS NOT TO DISTURB EXISTING SANITARY SEWER BEDDING/EMBANKMENT BETWEEN STA 3+91.01 TO STA 4+27.01. SHOULD THE BEDDING/EMBANKMENT BE DISTURBED, IN THE ENGINEER'S JUDGEMENT, THE CONTRACTOR WILL BE RESPONSIBLE FOR RECOMPACTING THE SANITARY TRENCH PRIOR TO PLACING THE STORM SEWER BETWEEN THESE STATIONS. THE CONTRACTOR SHALL USE CARE WHEN COMPACTING STORM SEWER BEDDING OVER THE SANITARY LINE.

| Inlet Number        | 2       | 3       |
|---------------------|---------|---------|
| Top of Curb         | 1828.95 | 1828.95 |
| Top P.C. Section    | 1827.95 | 1827.95 |
| Invert Elev. N      | -       | -       |
| Invert Elev. E      | 1824.30 | -       |
| Invert Elev. S      | -       | -       |
| Invert Elev. W      | 1824.20 | 1824.45 |
| Length P.C. Section | 3.75'   | 3.50'   |



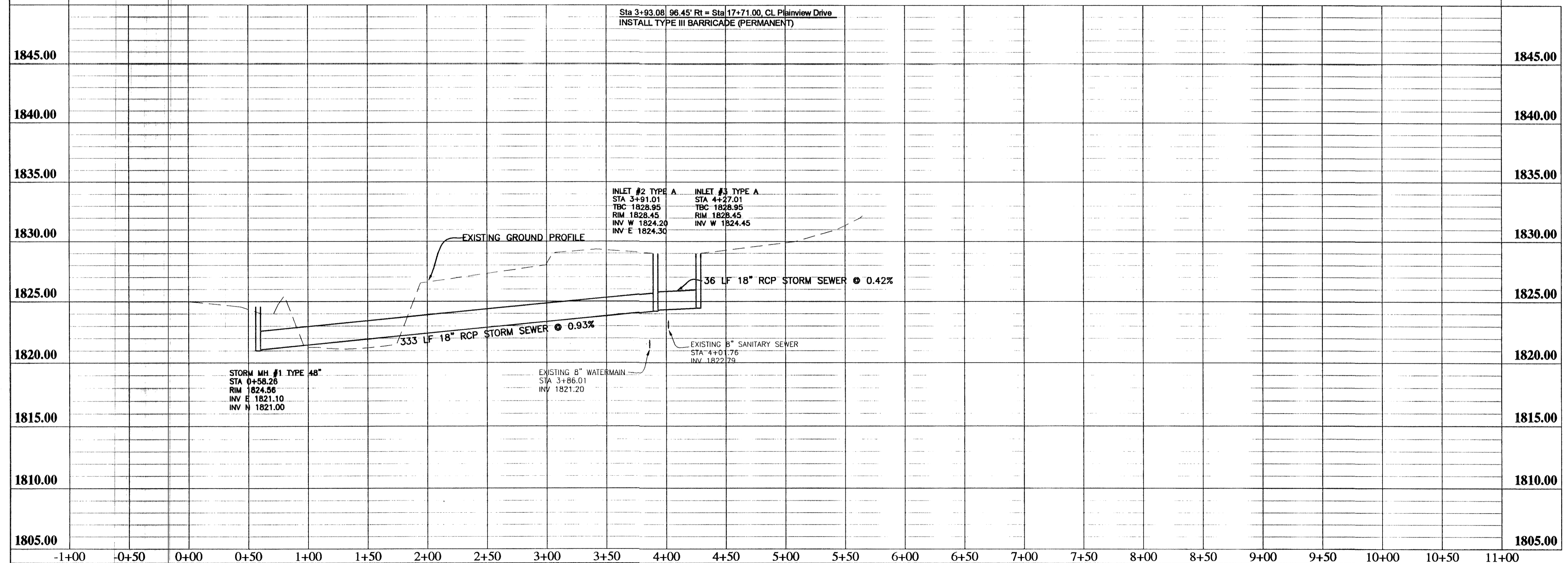
BOP 0+00.00  
N 412682.47  
E 1873891.88

Station Equation  
8th Ave SE Sta 35+31.98, 40.00' Rt =  
Storm Easement Sta 0+00.00, CL

EOP 5+64.61  
N 412713.35  
E 1874455.65

Begin Storm Sewer Quantities  
Sta 0+58.26

End Storm Sewer Quantities  
Sta 4+27.01



**APPROXIMATE QUANTITIES**

| Storm Sewer Items | Quantity |
|-------------------|----------|
| Pitrun Gravel     | 87 Ton   |
| Subcut Gravel     | 8 Ton    |
| 18" RCP Sewer     | 367 LF   |
| Type A 36" Inlet  | 2 EA     |



RECORD DRAWING

|  |   |                       |
|--|---|-----------------------|
| Rev'd  | PLAINVIEW HEIGHTS TENTH ADDITION<br>STREET IMPROVEMENT DISTRICT 2006-01<br>MANDAN, NORTH DAKOTA | SHEET NO.<br><b>8</b> |
| <b>Kadmas Lee &amp; Jackson</b><br>Engineers Surveyors<br>Planners | STORMWATER EASEMENT<br>PLAN AND PROFILE   | DRWN. BY<br>ADA       |
| CHK'D BY<br>TK   | CNTR. NO.<br>1406104  | DATE<br>04/26/06      |

J:\municipo\1406104 - Plainview 10th Streets\CADD\EP\StormEasement.dwg  
© Kadmas, Lee & Jackson, Inc. 2006