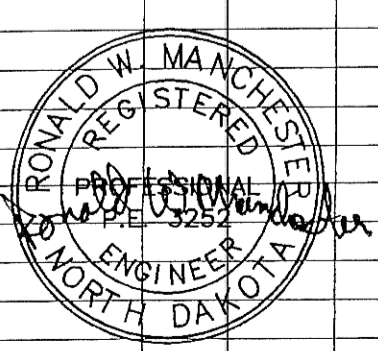
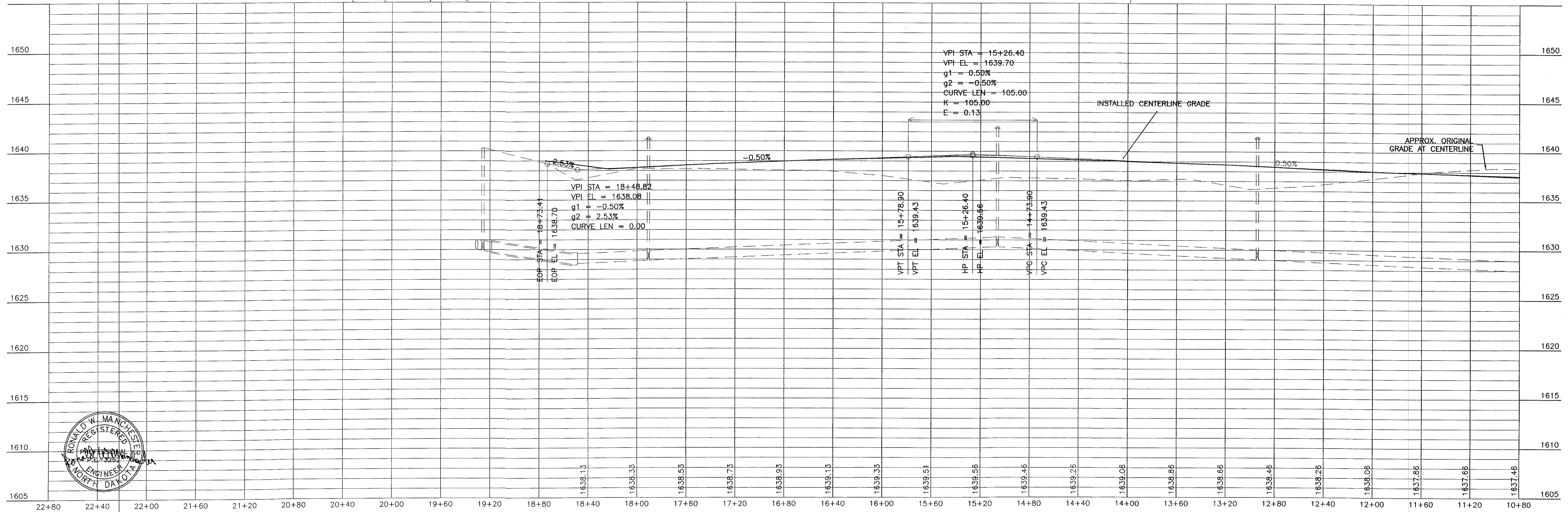
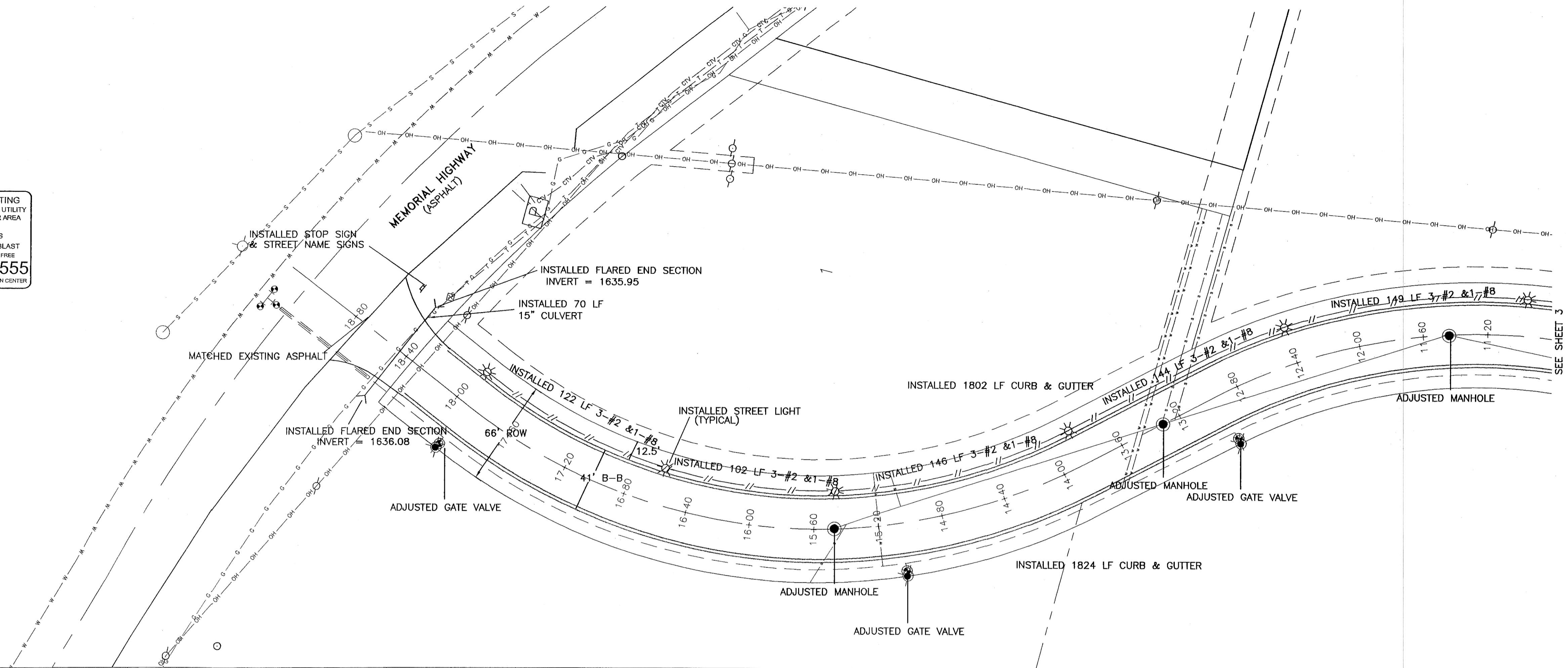


RIVERWOOD AVE SE 11+20 TO END AS BUILT


AVOID CUTTING UNDERGROUND UTILITY LINES IN YOUR AREA
 TWO WORKING DAYS BEFORE YOU DIG-DRILL-BLAST IN NORTH DAKOTA - CALL TOLL FREE 1-800-795-0555 UTILITIES UNDERGROUND LOCATION CENTER

SCALES:
 1" = 40' HOR
 1" = 5' VER



TOMAY ENGINEERING COMPANY
 CONSULTING CIVIL ENGINEERS
 902 2ND ST. N.W. MADISON, NORTH DAKOTA 58504 • 701-663-9463

PROJECT:
STREET IMPROVEMENTS DIST. #124 AREA "B"
RIVERWOOD COMMERCIAL PARK AS-BUILT
RIVERWOOD AVE SE 11+20 TO END

NO.	REVISIONS	BY	DATE	APP'D	DATE

SHEET NUMBER
4
 OF 7 SHEETS