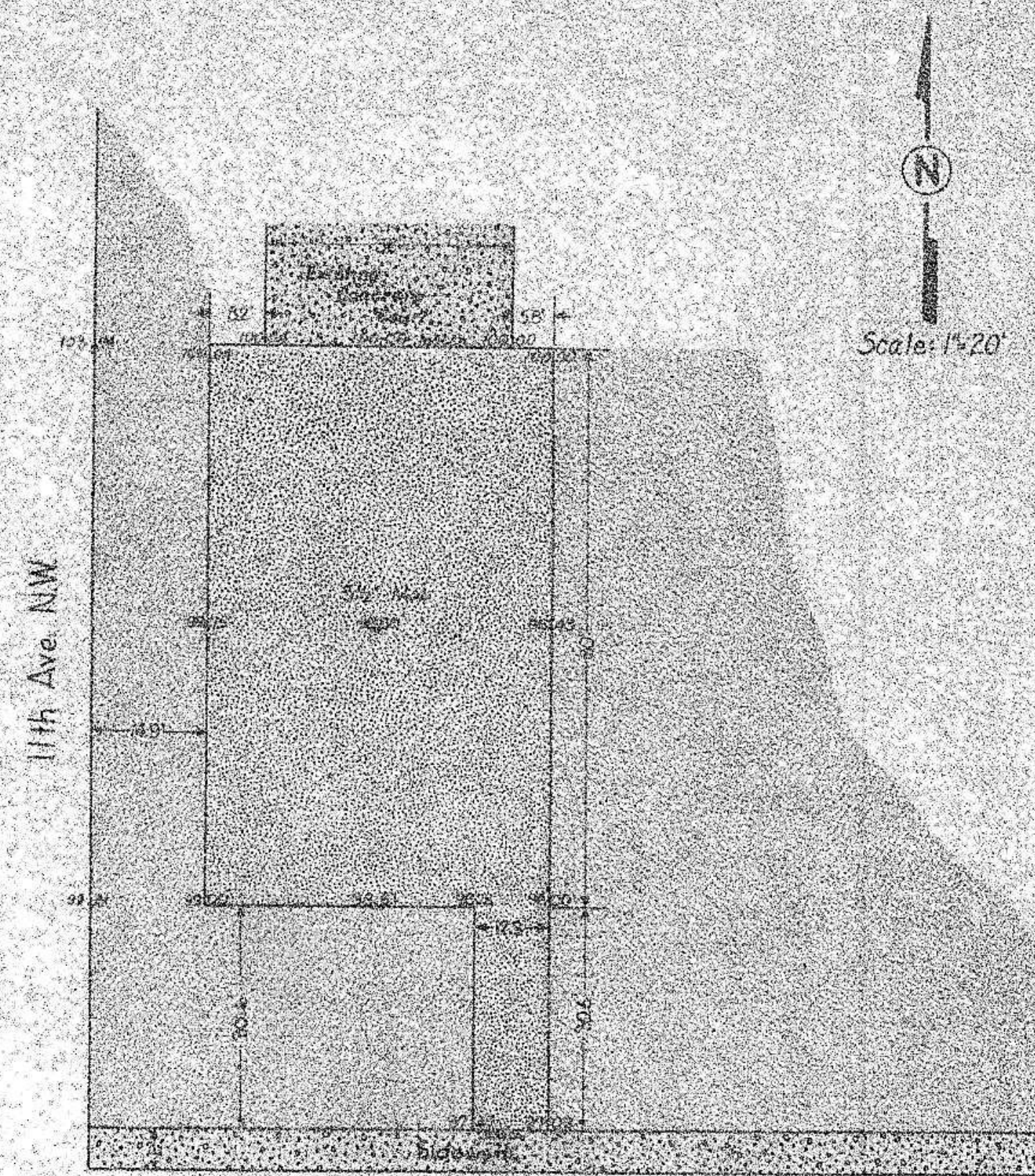


MARY STARK SCHOOL
ST. IMP. DISTRICT NO. 59

As-Built Quantities

Mary Stark School

Earth Embankment	98 C.Y.
Subcut Excavation	15.1 C.Y.
Stabilized Gravel Base	880.5 Ton
Subbase Preparation	784 S.Y.
3 1/2" A.C. Base	784 S.Y.
120-150 Pen. A.C. 011	1,884 Gallon

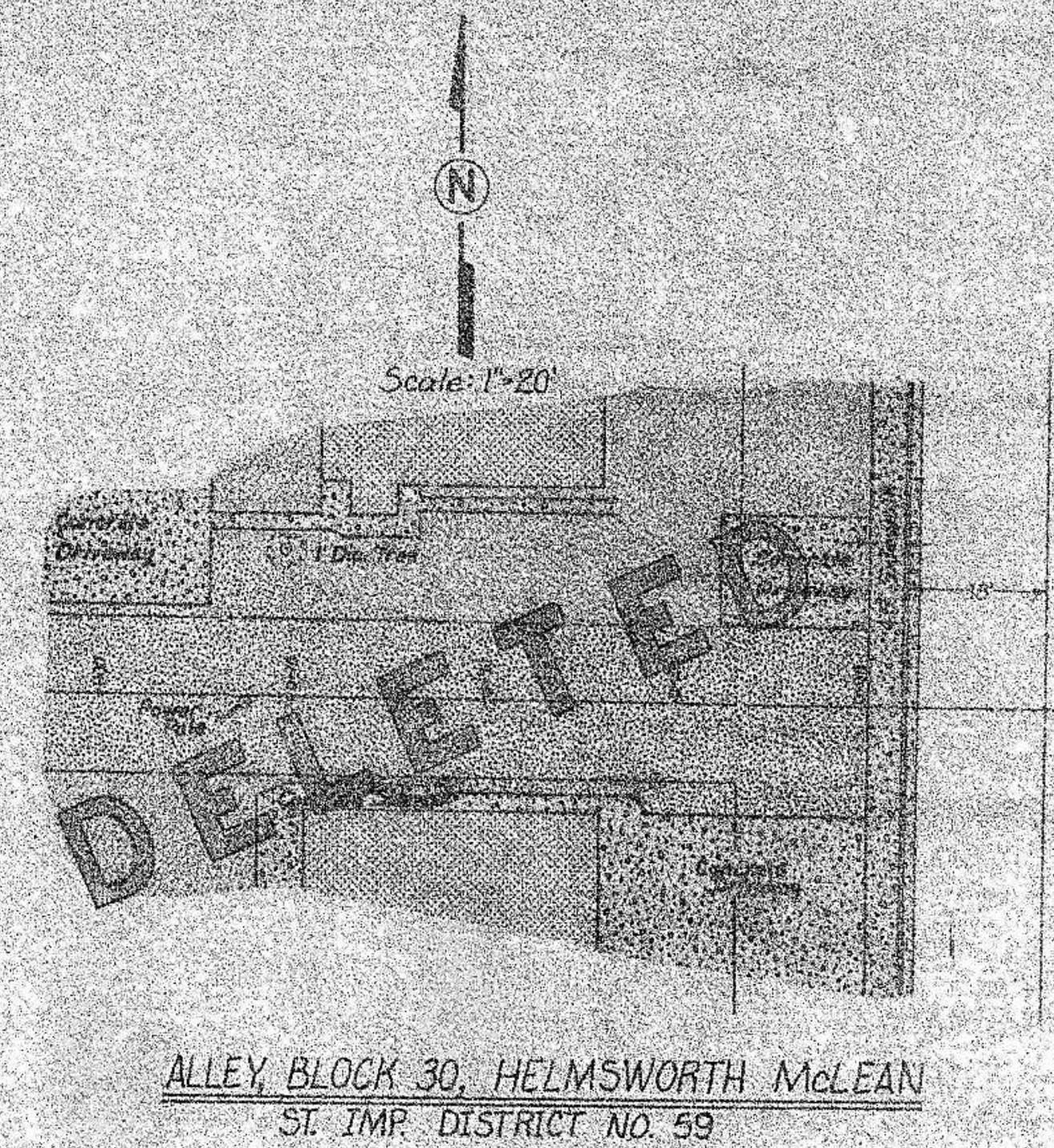


ROOSEVELT GRADE SCHOOL
ST. IMP. DISTRICT NO. 59

As-Built Quantities

Roosevelt Grade School

Earth Embankment	24 C.Y.
Earth Excavation	20 C.Y.
Stabilized Gravel Base	52 Ton
Subbase Preparation	464 S.Y.
3 1/2" A.C. Base	464 S.Y.
120-150 Pen. A.C. 011	1,163 Gallon



STREET IMPROVEMENT NO. 59

ASBUILT DRAWINGS