

LONGSPUR TRAIL S.E.

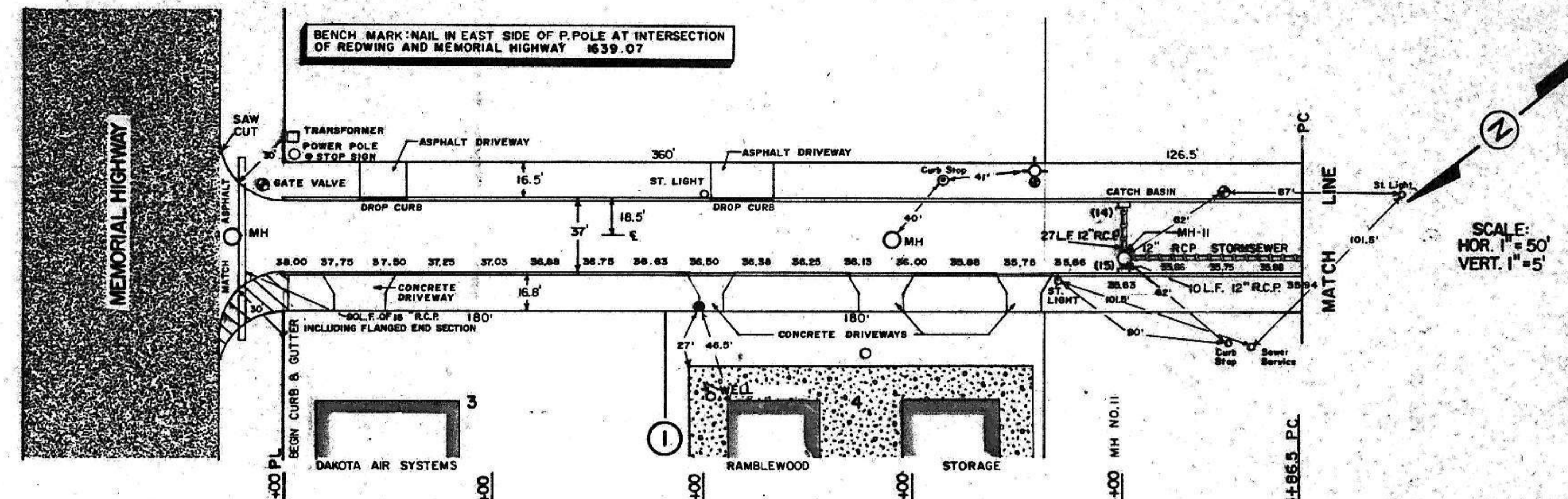
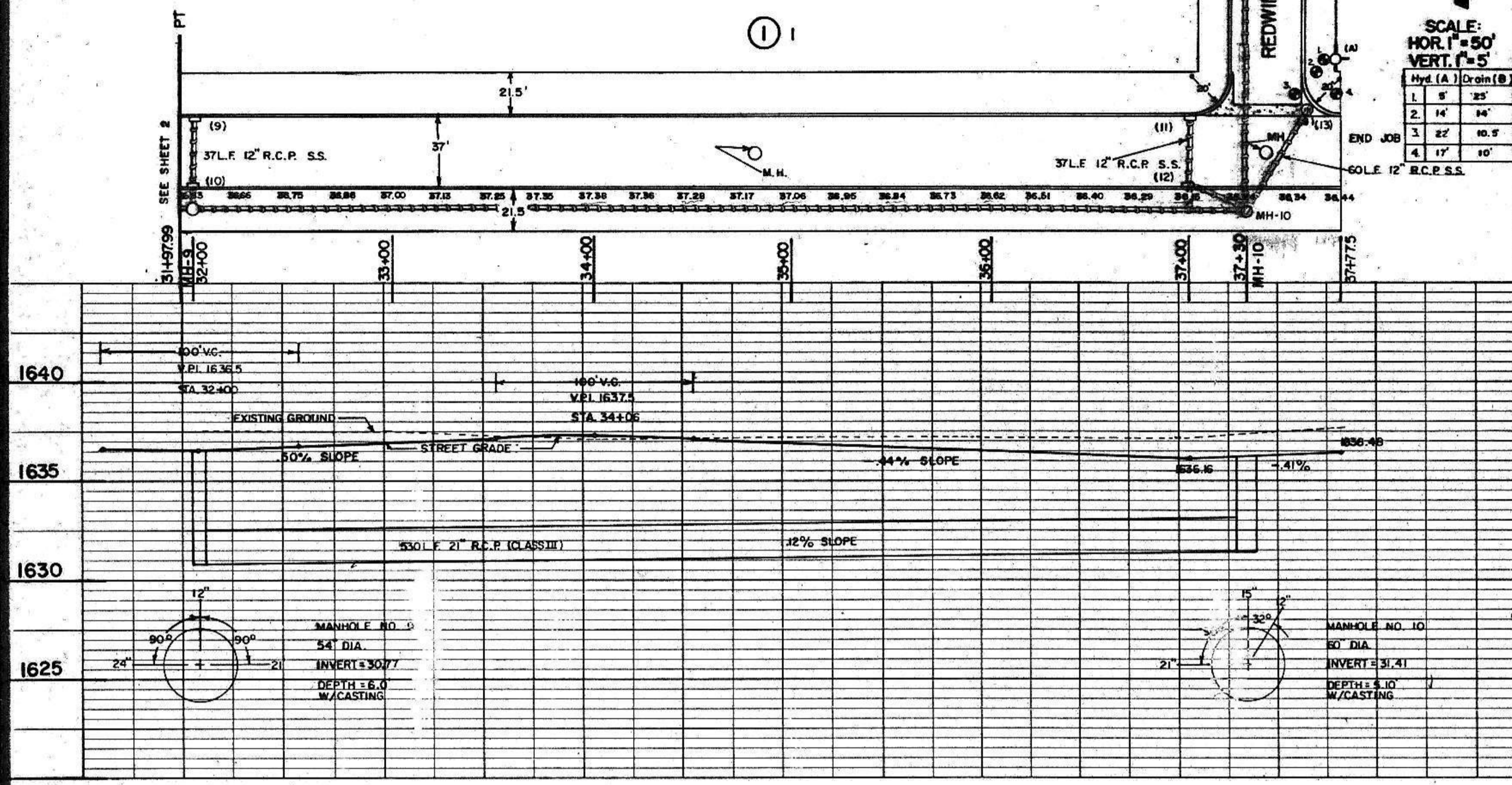
REDWING DRIVE S.E.

CONSTRUCTION NOTES
 1. ALL STATIONING IS TO CENTERLINE OF STREET.
 2. ELEVATIONS SHOWN ARE TOP OF CURB GRADES.
 3. EXISTING CULVERT TO BE REMOVED AND REMAIN PROPERTY OF OWNER.

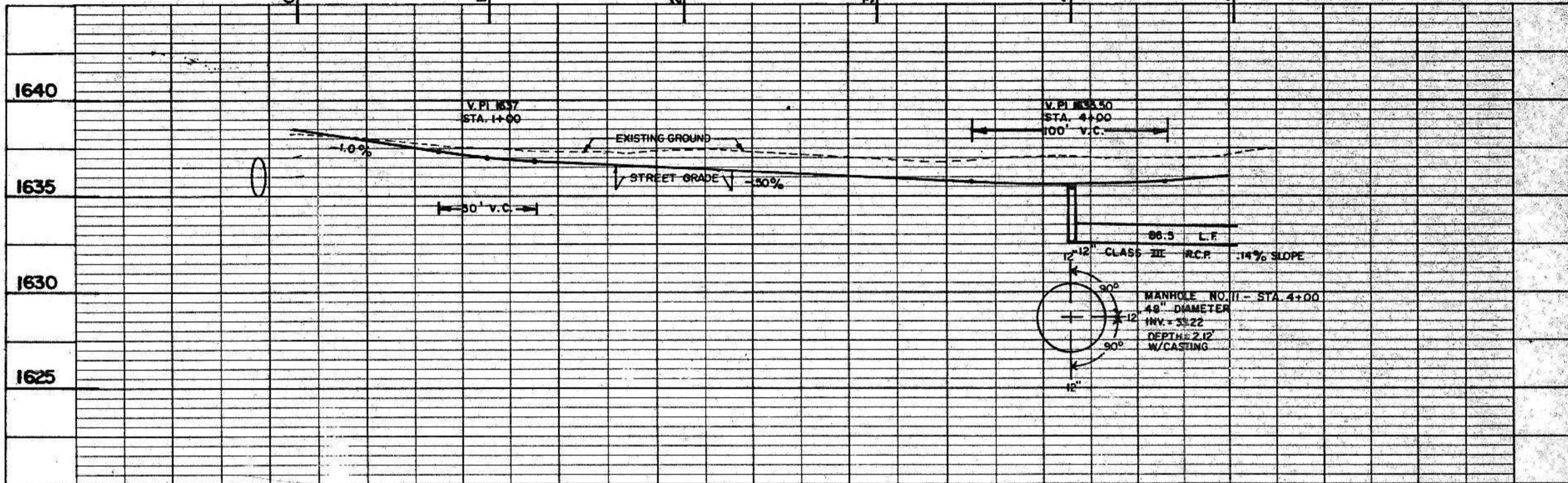
SEE THIS SHEET

SCALE: HOR. 1" = 50'
 VERT. 1" = 5'

1	5'	25'
2	14'	34'
3	22'	10.7'
4	17'	10.7'



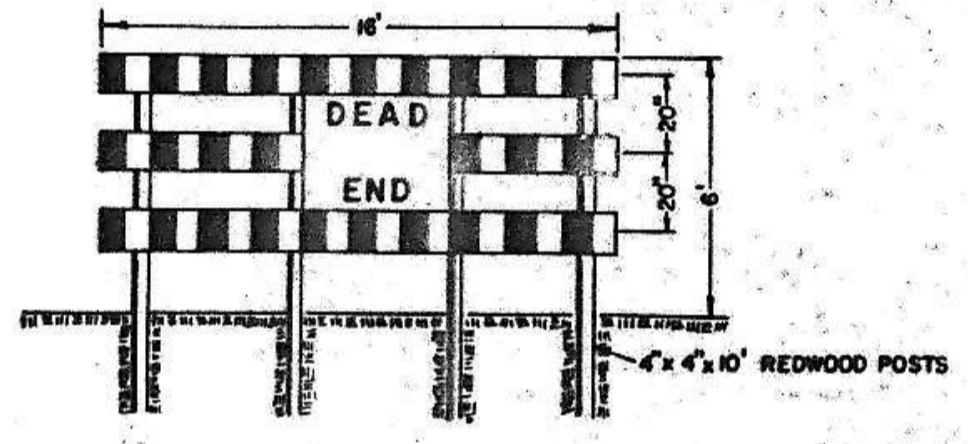
SCALE: HOR. 1" = 50'
 VERT. 1" = 5'



REDWING DRIVE S.E.

CAUTION
 LOCATE ALL BURIED UTILITIES BEFORE DIGGING.
 OVER HEAD POWER

BENCH MARK: NORTH MOST FLANGE BOLT, HYDRANT AT INTERSECTION OF REDWING DR. AND LONGSPUR TRAIL 1638.33



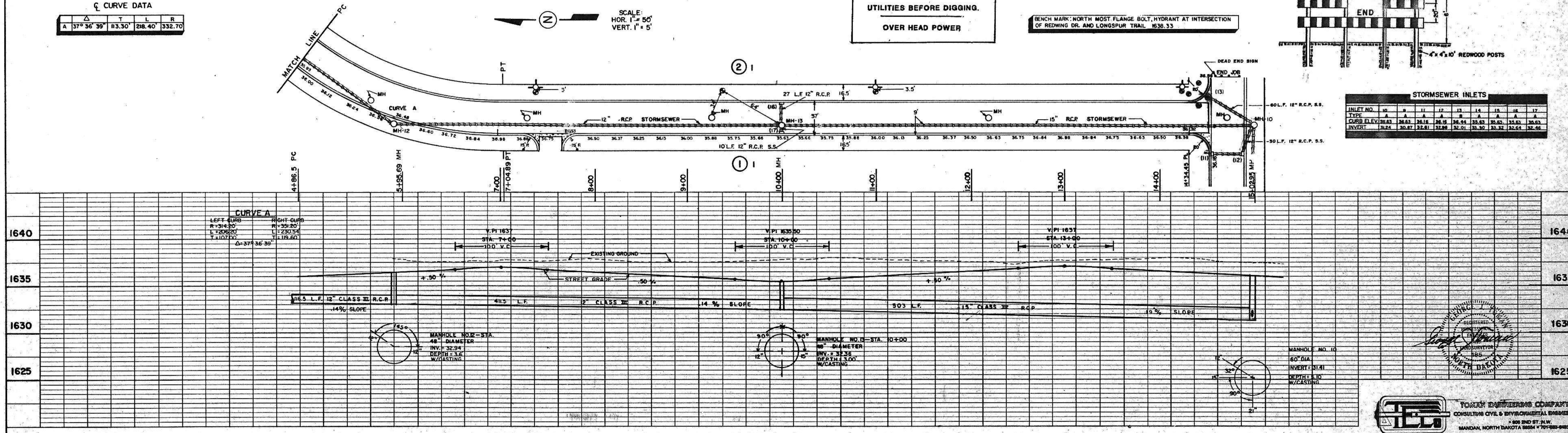
STORMSEWER INLETS

INLET NO.	10	11	12	13	14	15	16	17
TYPE	A	A	A	A	A	A	A	A
CURB ELEV.	36.83	36.83	36.16	36.16	36.44	35.83	35.83	35.83
INVERT	36.24	36.67	32.81	32.89	32.01	33.30	33.32	32.64

Q CURVE DATA

Δ	T	L	R	
A	37° 36' 39"	113.30'	288.40'	332.70'

SCALE: HOR. 1" = 50'
 VERT. 1" = 5'



PLAN
 SURVEYED, AS-BUILT CORRECTIONS, BY: []
 ALIGNMENT CHECKED, BY: []
 REVISIONS, BY: []
 DATE: []

PROFILE
 SURVEYED, BY: []
 REVISIONS, BY: []
 DATE: []

