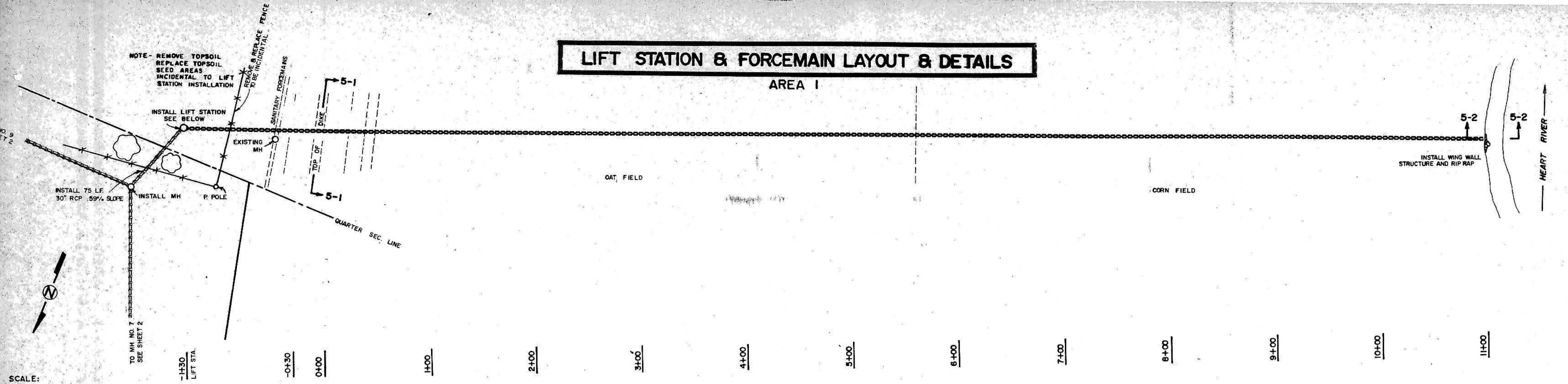
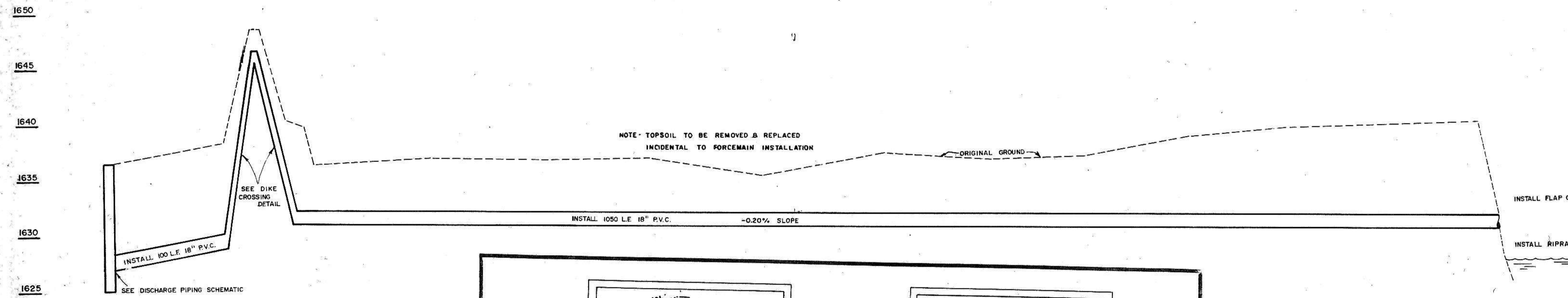


LIFT STATION & FORCEMAIN LAYOUT & DETAILS

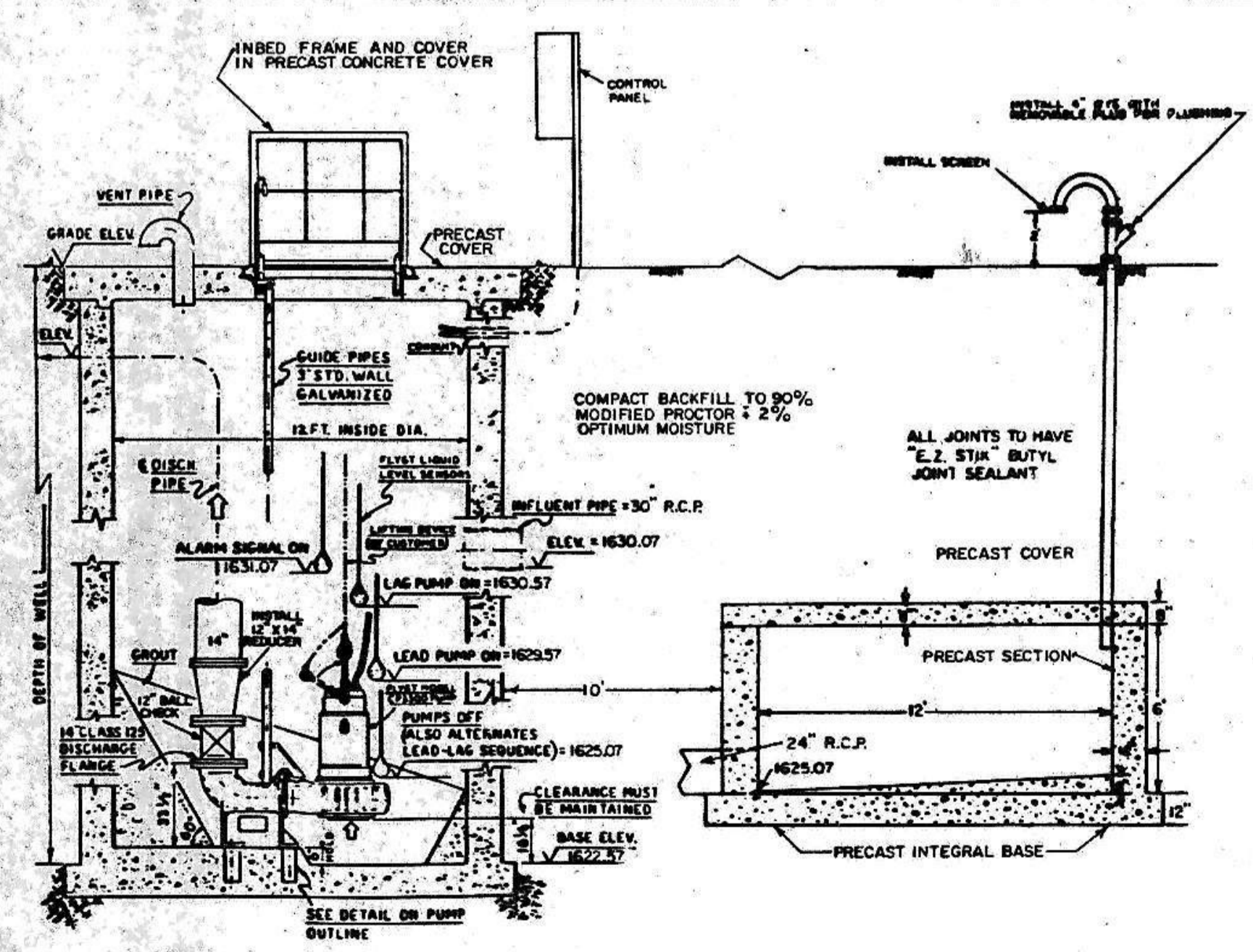
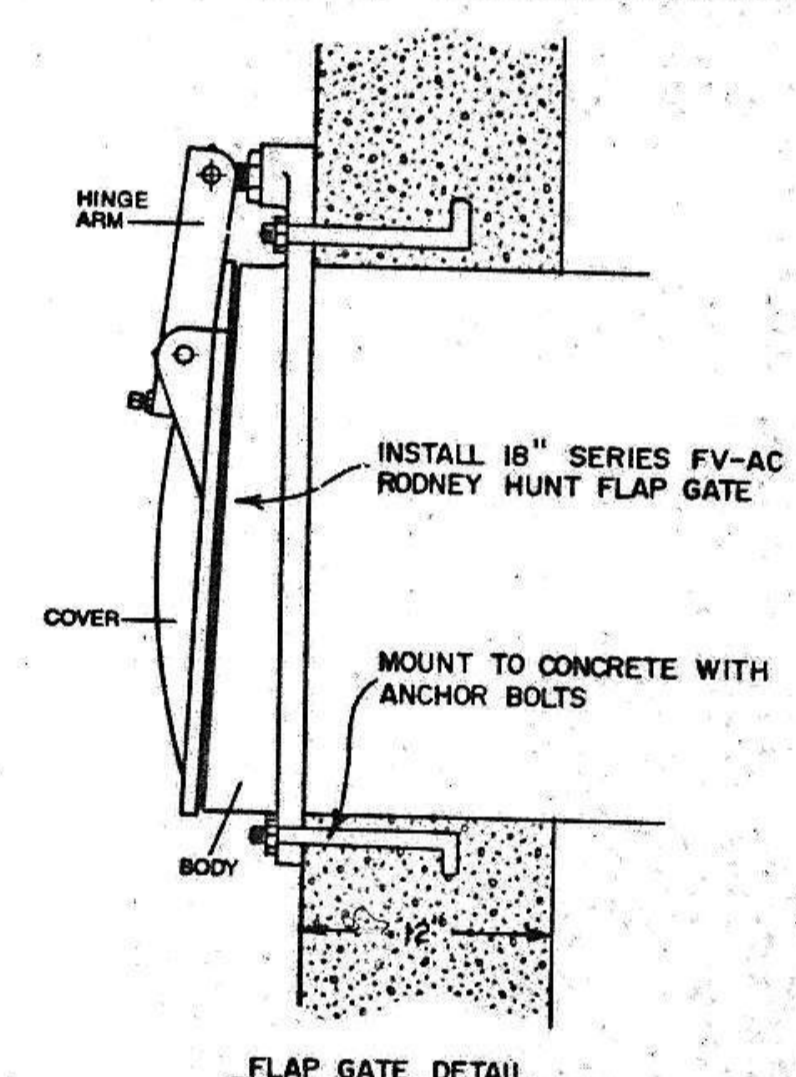
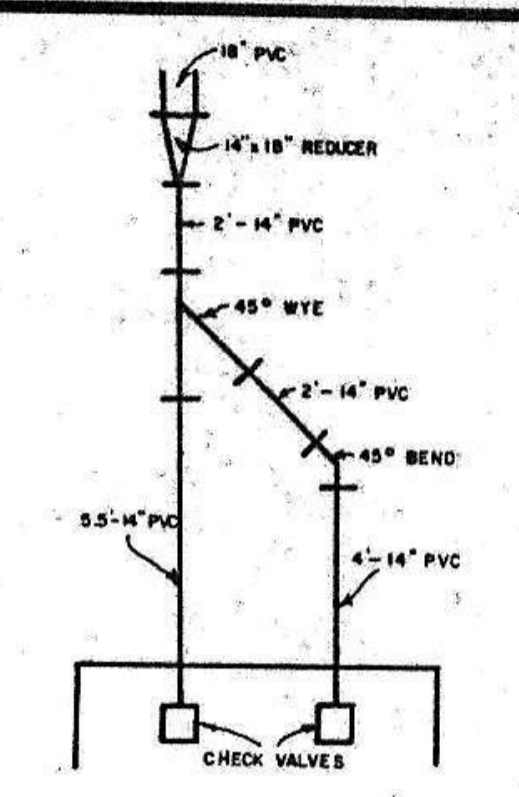
AREA I



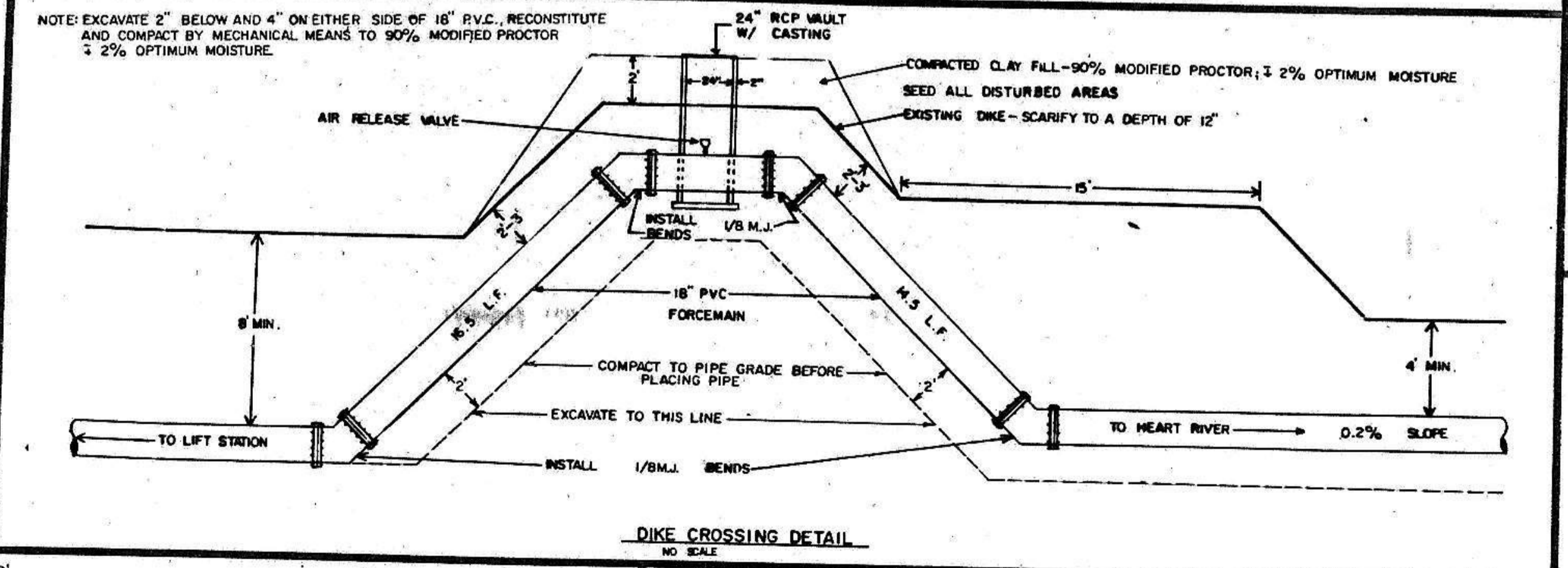
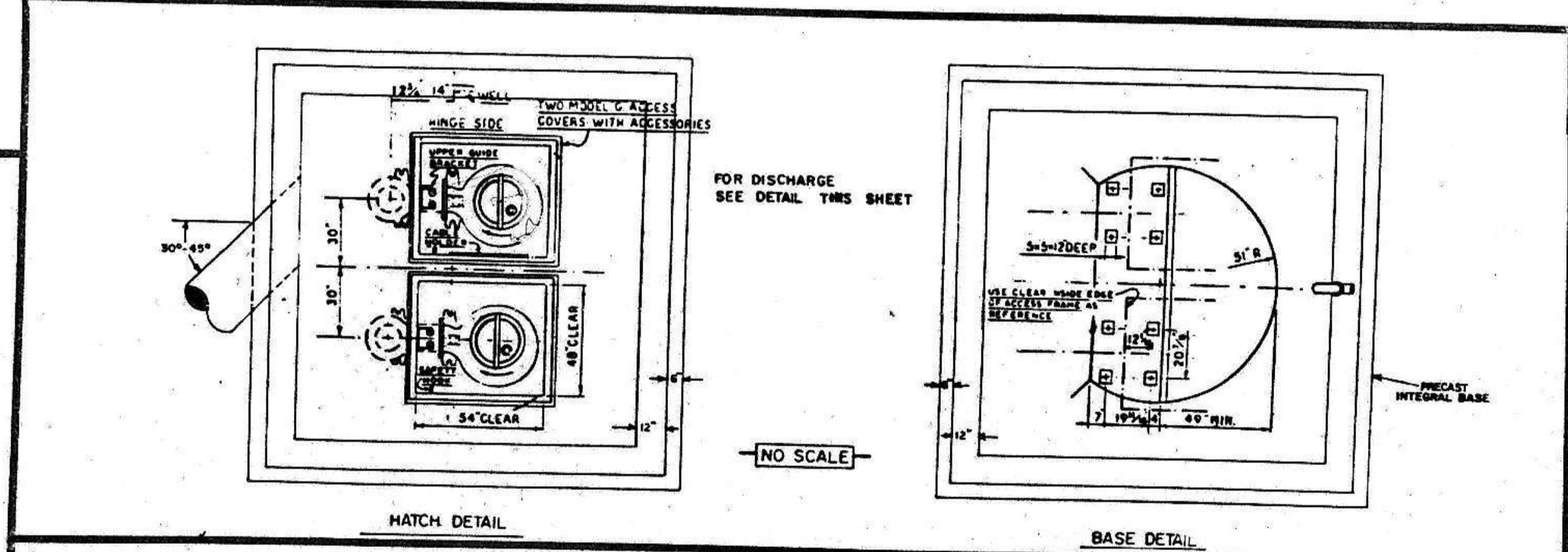
SCALE:
HOR. 1" = 50'
VERT. 1" = 5'



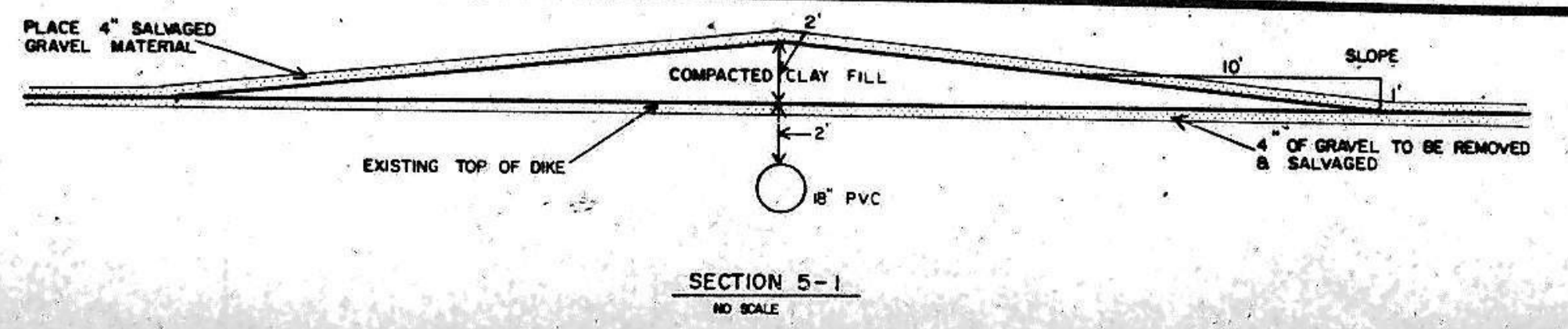
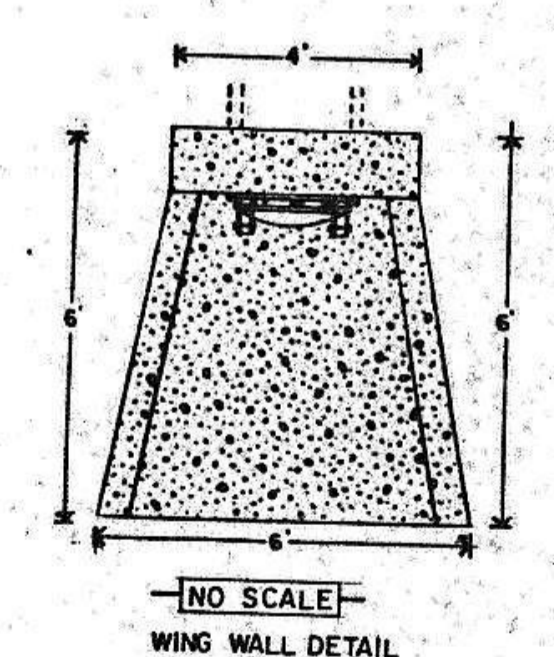
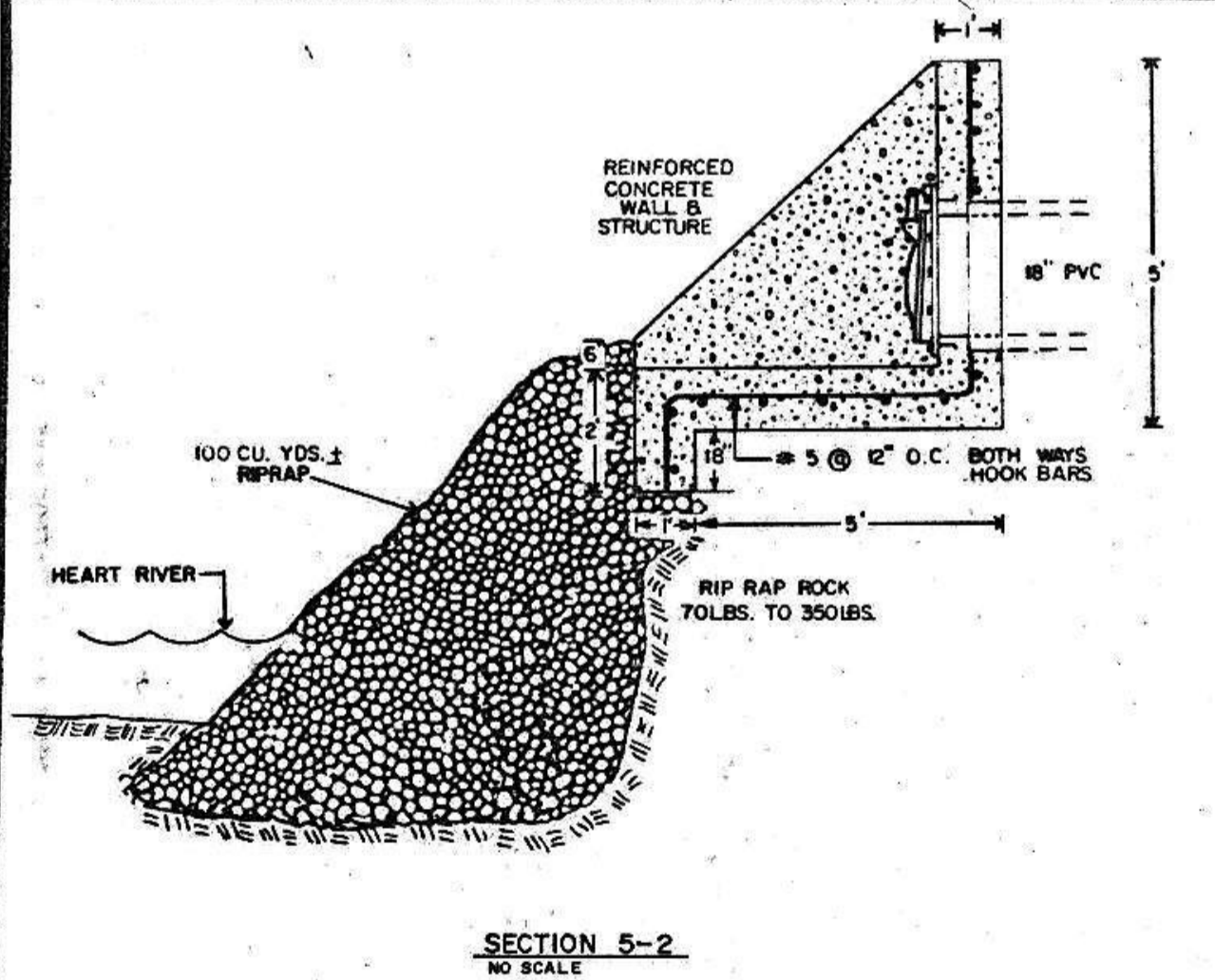
CAUTION
LOCATE ALL BURIED UTILITIES BEFORE DIGGING.
OVER HEAD POWER



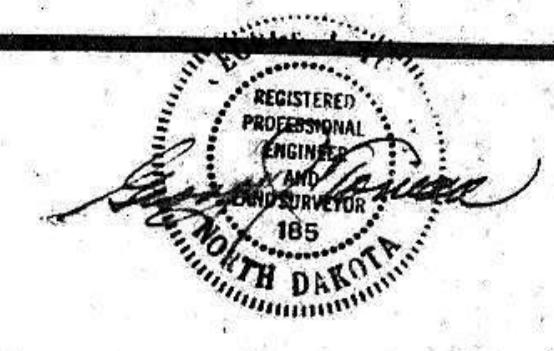
LIFT STATION DETAIL
NO SCALE



DIKE CROSSING DETAIL
NO SCALE



SECTION 5-1
NO SCALE



TOMAN ENGINEERING COMPANY
CONSULTING CIVIL & ENVIRONMENTAL ENGINEERS
P.O. BOX 708 • 808 2ND ST. N.W.
MANDAK, NORTH DAKOTA 58554 • 701-663-6463