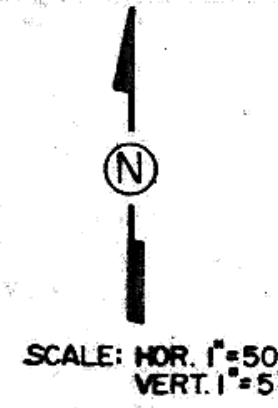
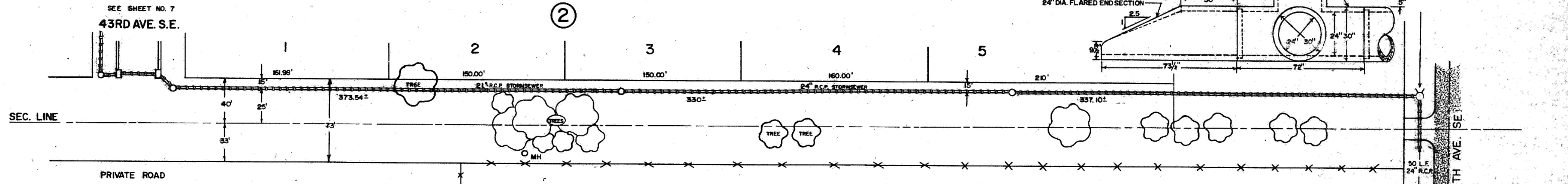


19TH ST. SE

AREA 2



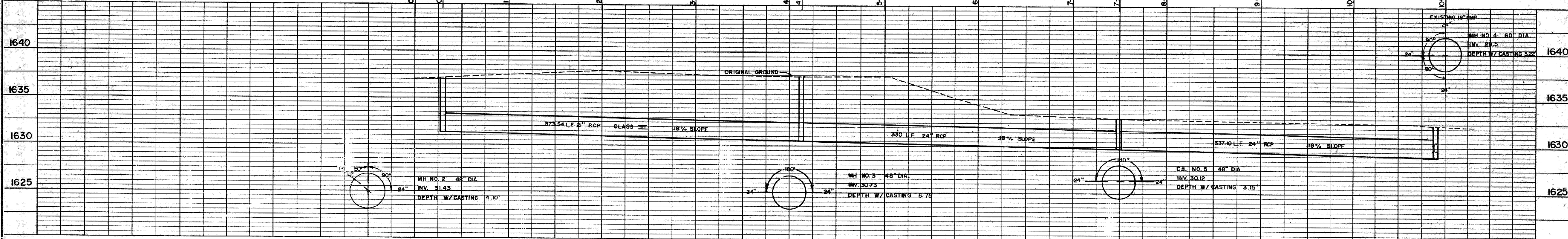
SCALE: HOR. 1"=50'
VERT. 1"=5'



CAUTION
LOCATE ALL BURIED UTILITIES BEFORE DIGGING.
OVER HEAD POWER

INSURE POSITIVE DRAINAGE TO SOUTH TO BE DETERMINED IN FIELD BY ENGINEER.

DATE: _____ BY: JRM
DRAWN BY: _____
CHECKED BY: _____
DATE: _____
NO. _____

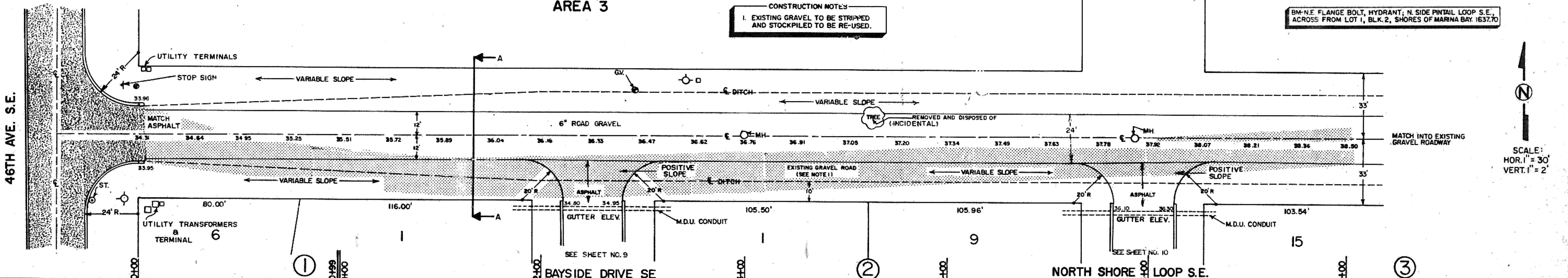
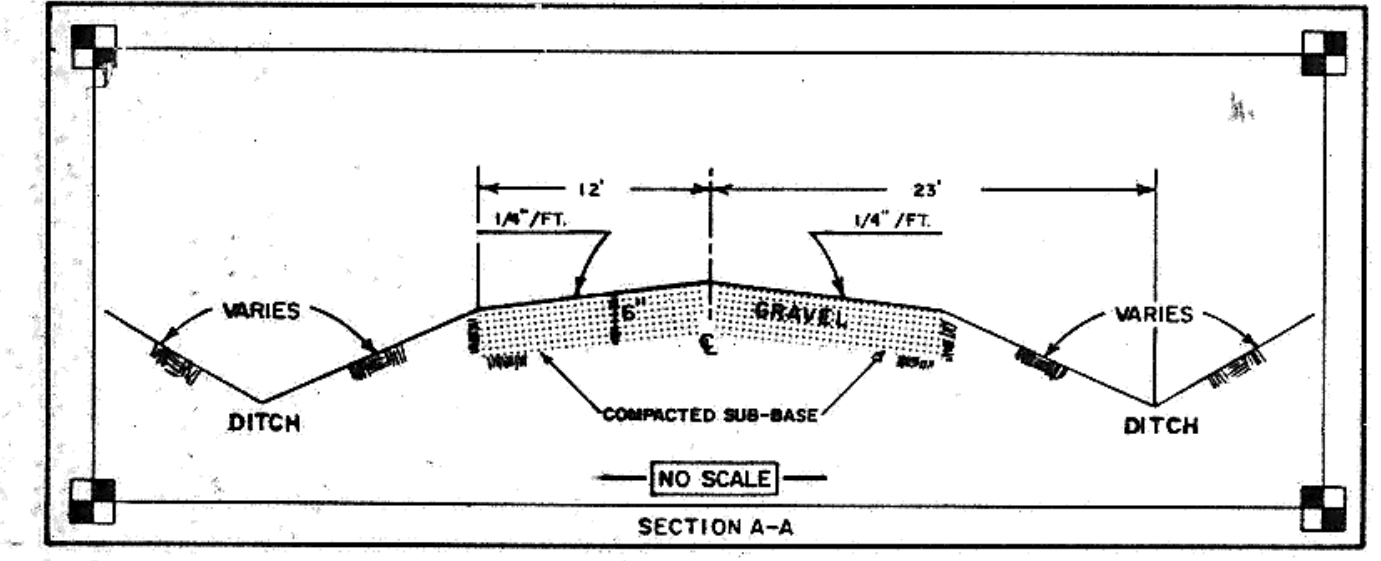


PINTAIL LOOP SE

AREA 3

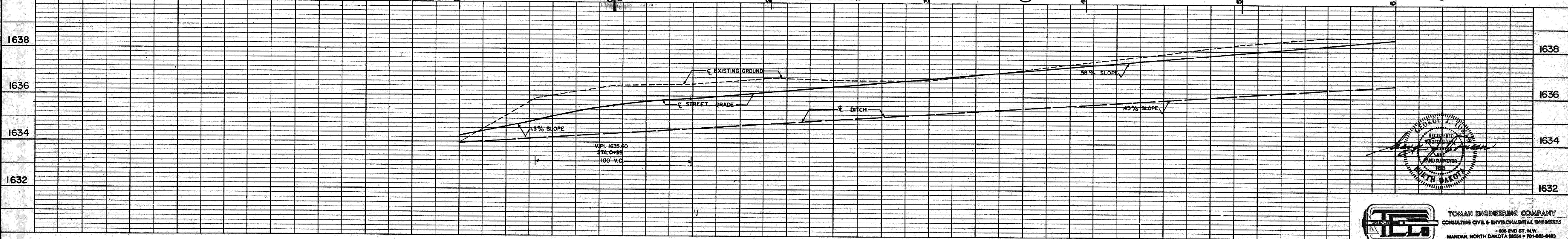
CONSTRUCTION NOTES:
1. EXISTING GRAVEL TO BE STRIPPED AND STOCKPILED TO BE RE-USED.

BM-N/E FLANGE BOLT, HYDRANT, N. SIDE PINTAIL LOOP S.E. ACROSS FROM LOT 1, BLK. 2, SHORES OF MARINA BAY (1637.0)



SCALE: HOR. 1"=30'
VERT. 1"=2'

DATE: _____ BY: _____
DRAWN BY: _____
CHECKED BY: _____
DATE: _____
NO. _____



TOMAN ENGINEERING COMPANY
CONSULTING CIVIL & ENVIRONMENTAL ENGINEERS
200 2ND ST. N.W.
MANDAK, NORTH DAKOTA 58554 • 701-883-8483