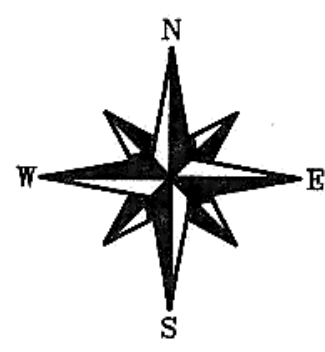
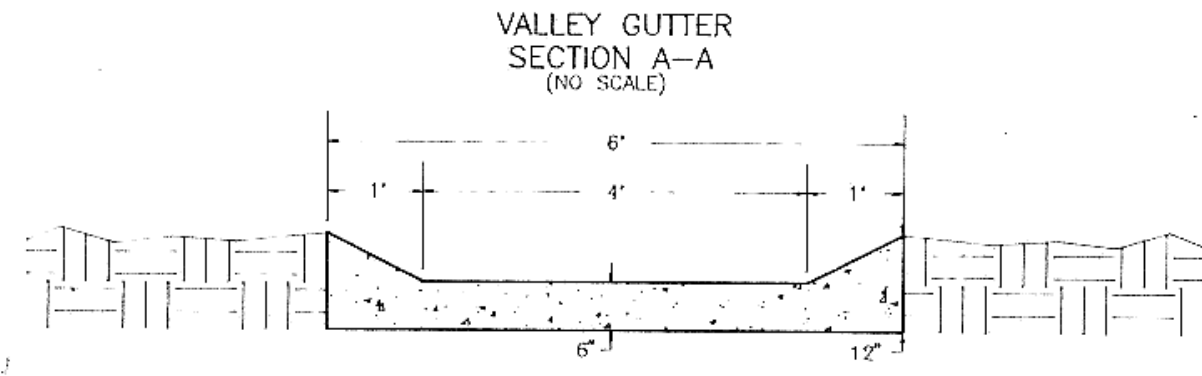


AREA "B" STREET IMPROVEMENT DIST. 86 MANDAN, NORTH DAKOTA

CAUTION
LOCATE ALL BURIED UTILITIES BEFORE DIGGING
OVER HEAD POWER

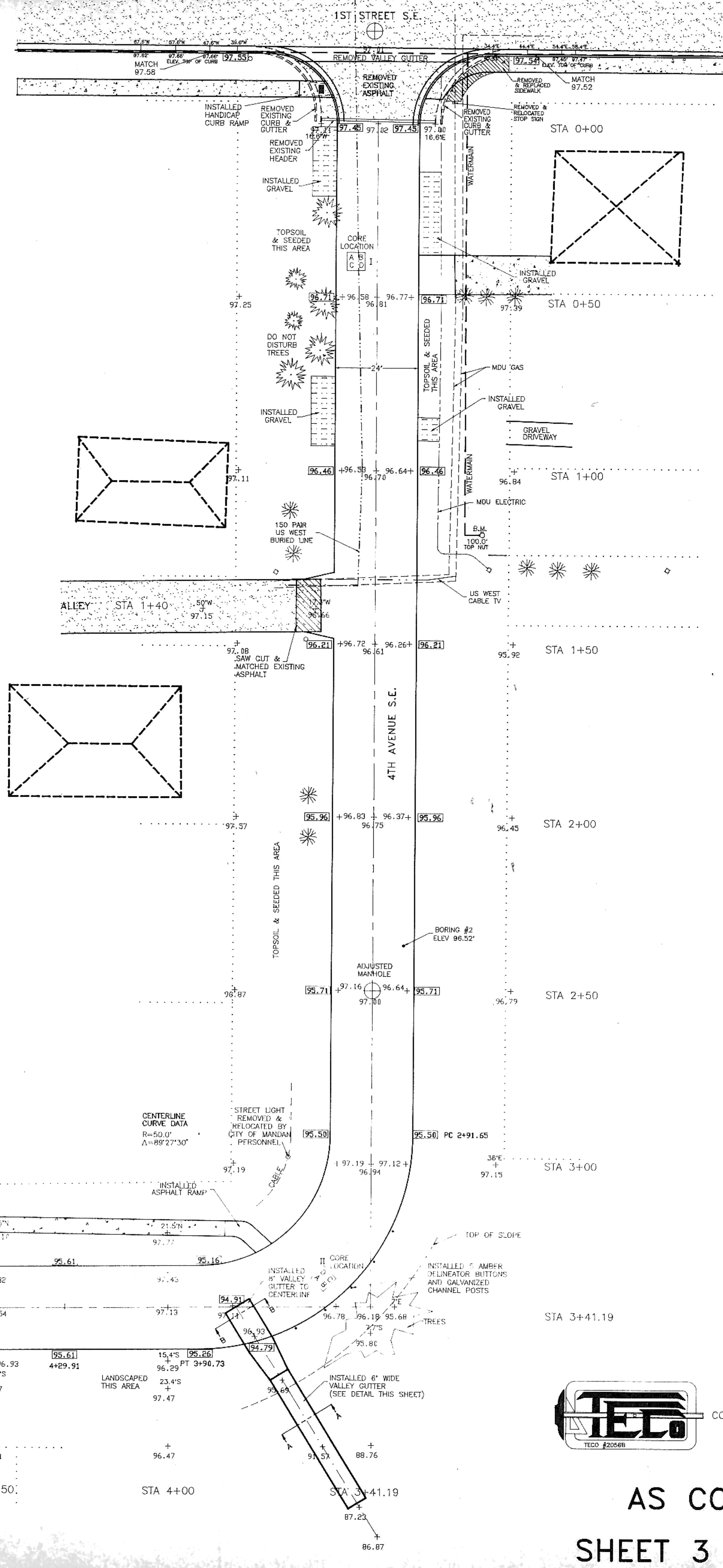


SCALE: 1"=20'
0 10 20 40 80
JANUARY 1993

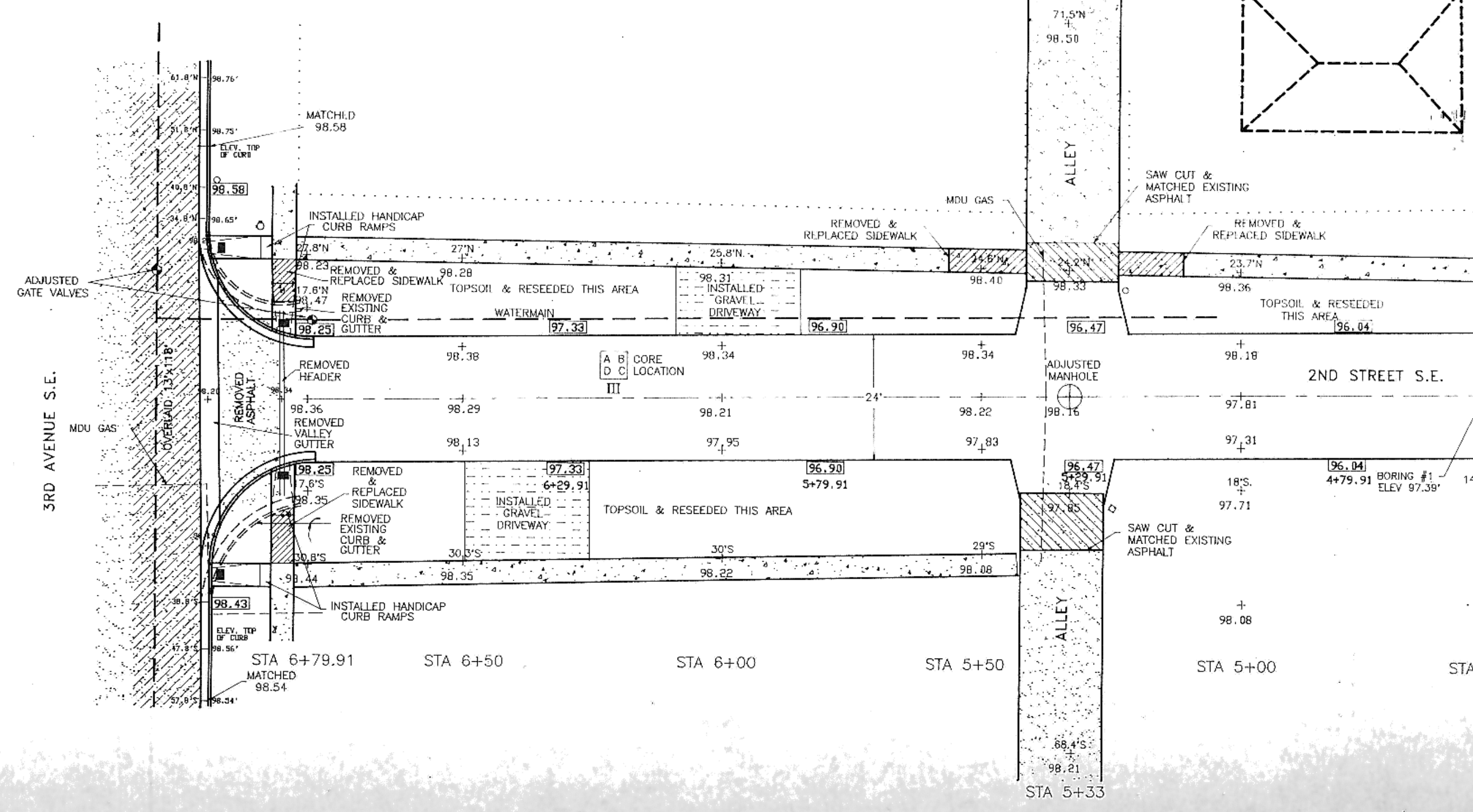
- LEGEND**
- ⊕ MANHOLE
 - POWER POLE
 - HYDRANT
 - STREET LIGHT
 - STOP SIGN
 - GATE VALVE
 - ▨ EXISTING ASPHALT
 - ▨ EXISTING CONCRETE
 - ⋯ PROPERTY LINE
 - 97.11 EXISTING ELEVATION
 - 97.69 TOP OF CURB ELEVATION
 - PROPOSED CURB & GUTTER
 - - - APPROXIMATE LOCATION WATERMAIN

NOTE: ALL DISTURBED AREAS TO BE SEEDED
ALL DRIVEWAY LOCATIONS TO BE FIELD VERIFIED
ALL AREA "B" STREETS HAVE INVERTED CENTERLINES

CONTRACTOR
NORTHERN IMPROVEMENT CO.



CAUTION
LOCATE ALL BURIED UTILITIES BEFORE DIGGING
OVER HEAD POWER



TOMAN ENGINEERING COMPANY
CONSULTING CIVIL & ENVIRONMENTAL ENGINEERS
906 2ND ST. A.W. • MANDAN, NORTH DAKOTA 58554 • 701-663-6483

AS CONSTRUCTED
SHEET 3 OF 4 SHEETS