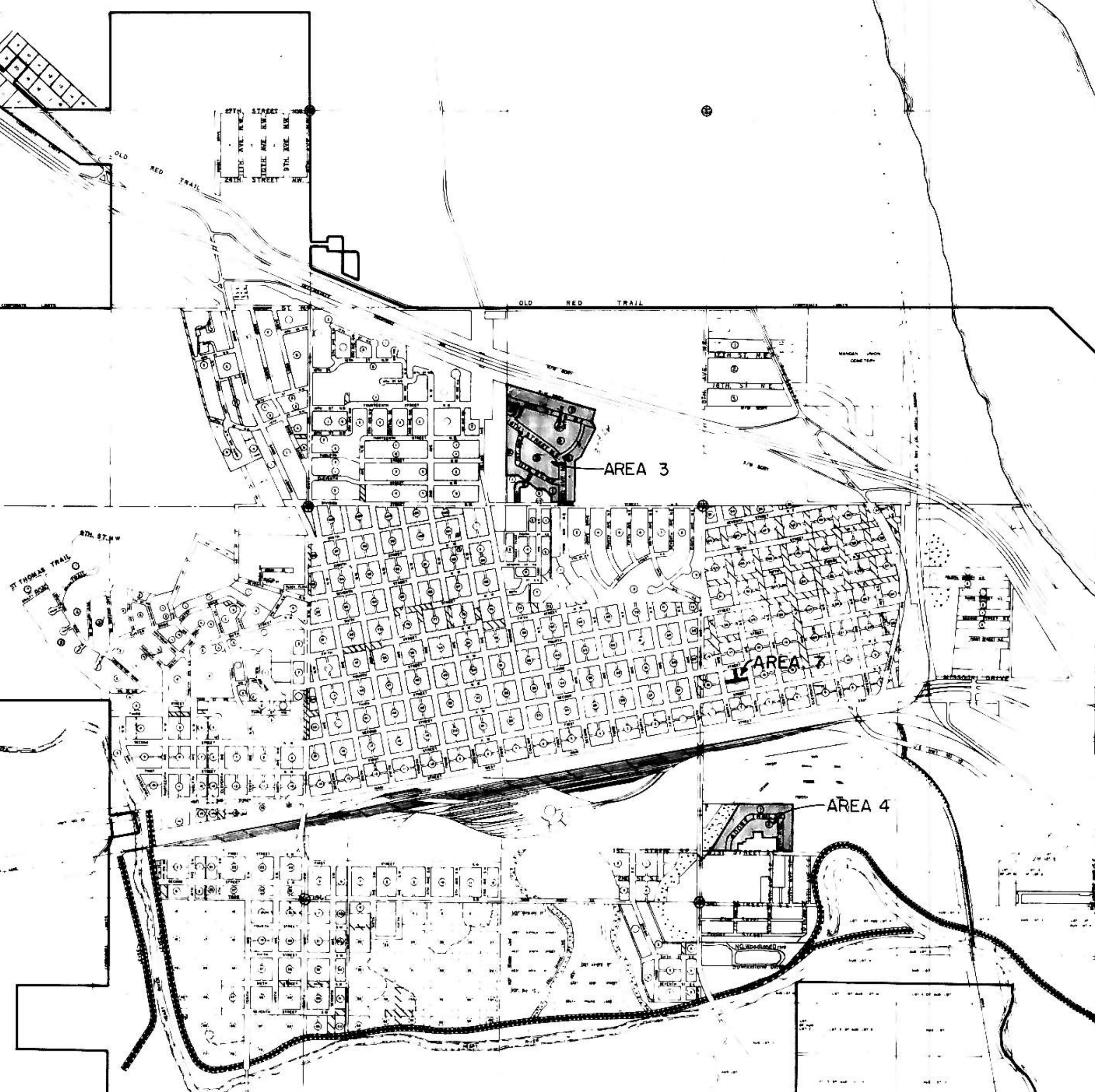
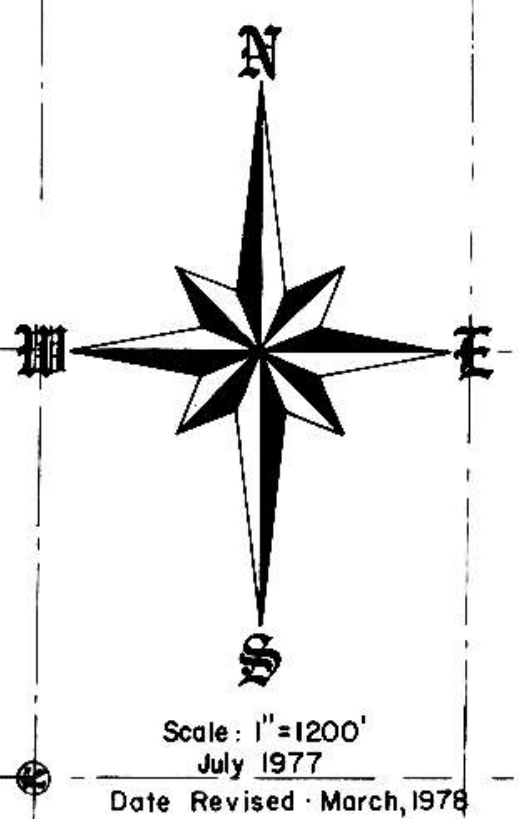
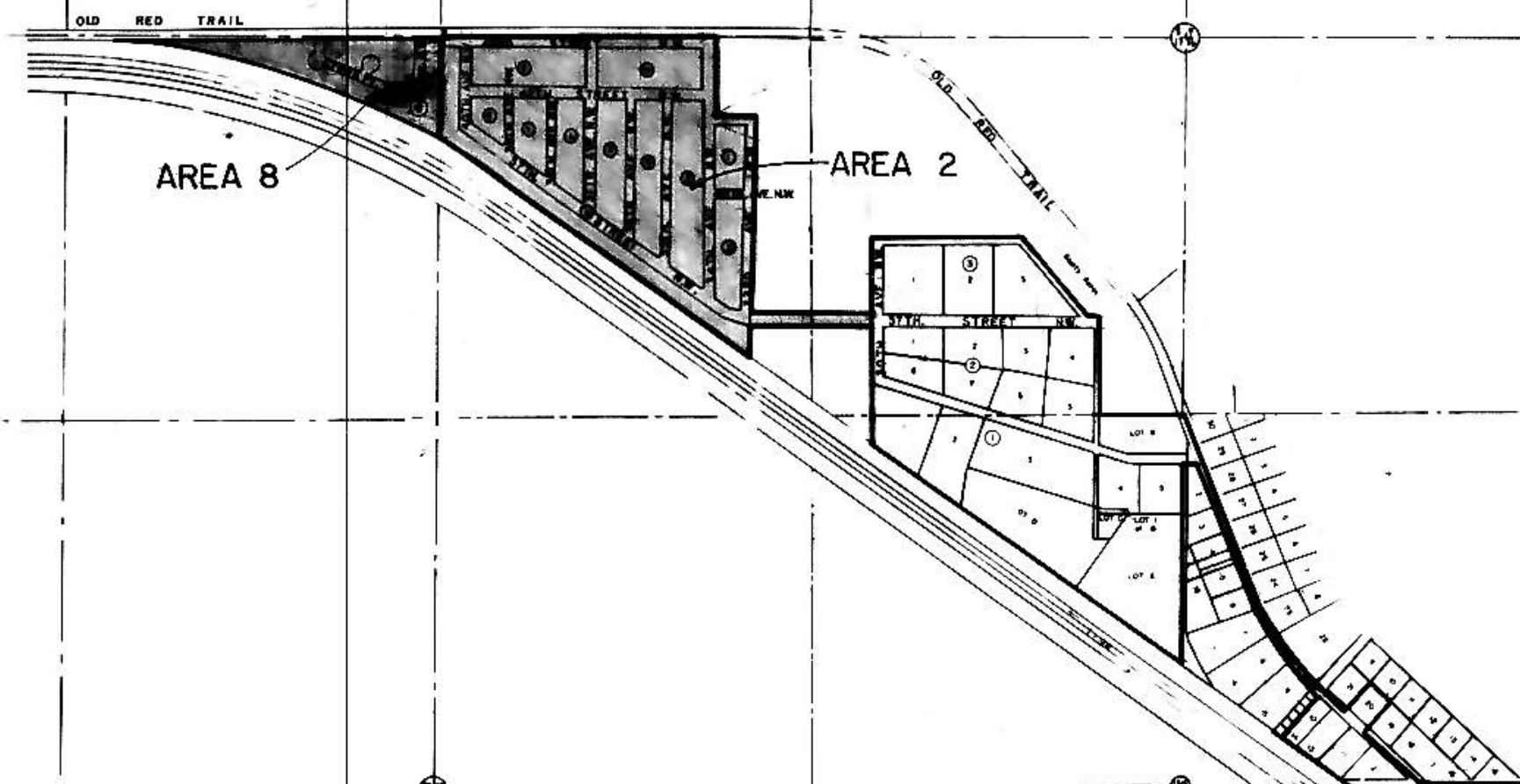


STREET IMPROVEMENT DISTRICT NO. 55 CITY OF MANDAN, NORTH DAKOTA

INDEX

1. PROJECT LAYOUT -- AREA NO. 1, 5 & 6
2. PROJECT LAYOUT -- AREA NO. 2
3. PROJECT LAYOUT -- AREA NO. 3 & 4
4. PROJECT LAYOUT -- AREA NO. 8
- 1-1 8TH AVENUE SE
- 1-2 16TH STREET SE
- 1-3 10TH AVENUE SE & WHITMAN ROAD
- 1-4 9TH AVENUE SE STA. 0+00 to STA. 7+25
- 1-5 9TH AVENUE SE STA. 7+25 to STA. 16+71.11
- 1-6 12TH AVENUE SE & EMBERLAND DRIVE
- 2-1 43RD STREET NW STA. 1+98.62 to STA. 12+50
- 2-2 43RD STREET NW STA. 12+50 to STA. 18+34.72
- 2-3 42ND STREET NW STA. 0+39 to STA. 12+05
- 2-4 42ND STREET NW STA. 12+05 to STA. 16+82.75
- 2-5 42ND STREET NW STA. 0+34.63 to STA. 3+11.94 & 40TH STREET NW STA. 0+34.63 to STA. 2+42.06
- 2-6 37TH STREET NW STA. 0+20.40 to STA. 11+50
- 2-7 37TH STREET NW STA. 11+50 to STA. 23+52.25
- 2-8 37TH STREET NW STA. 23+52.25 to STA. 33+10.72
- 2-9 40TH AVENUE NW
- 2-10 39TH AVENUE NW
- 2-11 38TH AVENUE NW
- 2-12 37TH AVENUE NW
- 2-13 36TH AVENUE NW
- 2-14 35TH AVENUE NW STA. 0+35 to STA. 12+14.27
- 2-15 34TH AVENUE NW STA. -0+47.42 to STA. 12+00
- 2-16 34TH AVENUE NW STA. 12+00 to STA. 17+99.17
- 2-17 33RD AVENUE NW STA. 0+19.17 to STA. 7+00
- 2-18 33RD AVENUE NW STA. 7+00 to STA. 13+60.07
- 3-1 15TH STREET NE
- 3-2 14TH STREET NE
- 3-3 3RD AVENUE NE
- 3-4 1ST AVENUE NE & 11TH STREET NE
- 3-5 ANNE'S PLACE NE & SHANNON'S DRIVE NE
- 3-6 TOWER PLACE NE
- 4-1 ADOBE TRAIL SE
- 4-2 9TH AVENUE SE
- 5-1 12TH AVENUE SE
- 5-2 17TH STREET SE & 18TH STREET SE
- 5-3 19TH STREET SE & 16TH STREET SE
- 5-4 15TH STREET SE & APPROACH ROAD TO HIGHWAY 1806
- 5-5 14TH AVENUE SE
- 6-1 19TH STREET SE STA. 0+00 to STA. 9+00
- 6-2 19TH STREET SE STA. 9+00 to STA. 16+51.15
- 6-3 11TH AVENUE SE
- 6-4 20TH STREET SE
- 6-5 12TH AVENUE SE
- 6-6 23RD STREET SE
- 7-1 ALLEY BETWEEN 8TH AVENUE NE & 9TH AVENUE NE
- 8-1 41st AVENUE NW STA 0+00 to STA. 5+22
- 8-2 CROWN POINT ROAD NW STA. 0+00 to STA. 8+56.73
- 8-3 CROWN POINT ROAD NW STA. 0+35 to STA. 1+68



CIVIL ENGINEERING LAND PLANNING LAND SURVEYING

SWENSON, HAGEN & CO. P.C.
Consulting Engineers

PO BOX 1135, 909 BASIN AVENUE
BISMARCK, NORTH DAKOTA 58501
701-223-2600

Prepared For:
City of Mandan, North Dakota

Terrance Potthoff, City Engineer
411 Sixth Avenue Southwest
Mandan, North Dakota

ENGINEER'S CERTIFICATE

I, EDWARD W. HAGEN, A REGISTERED PROFESSIONAL ENGINEER AND LAND SURVEYOR, HEREBY CERTIFY THAT THE PLANS FOR STREET IMPROVEMENT DISTRICT NO. 55 FOR THE CITY OF MANDAN, NORTH DAKOTA WERE PREPARED UNDER MY SUPERVISION AND ARE COMPLETE AND CORRECT TO THE BEST OF MY KNOWLEDGE AND BELIEF.

Edward W. Hagen
EDWARD W. HAGEN
REGISTERED PROFESSIONAL ENGINEER AND
LAND SURVEYOR #850