

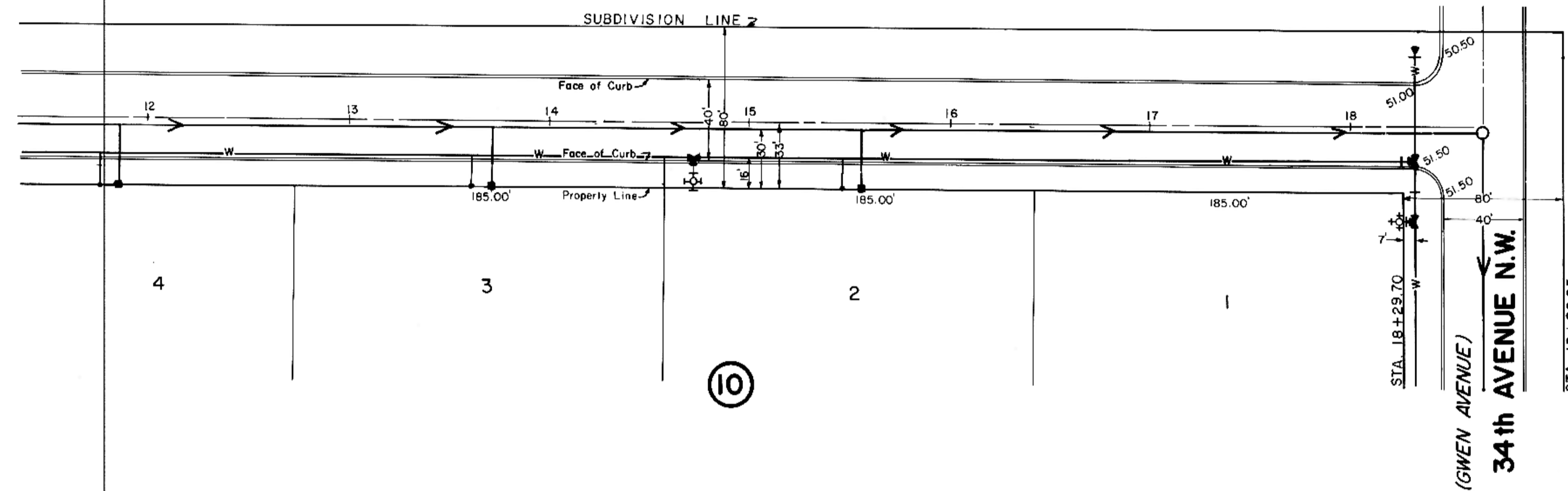
DATE
BY
SURVEYED
ADJUSTED
ALIGNED
CHECKED
RECORDED
PLAN
NOTE BOOK
No.

DATE
BY
SURVEYED
ADJUSTED
ALIGNED
CHECKED
RECORDED
PROFILE
NOTE BOOK
No.

BEGIN QUANTITIES
STA 12+50

HORIZONTAL SCALE: 1" = 50'
VERTICAL SCALE: 1" = 5'
DATE: JULY, 1977

END QUANTITIES
STA 18+34.72

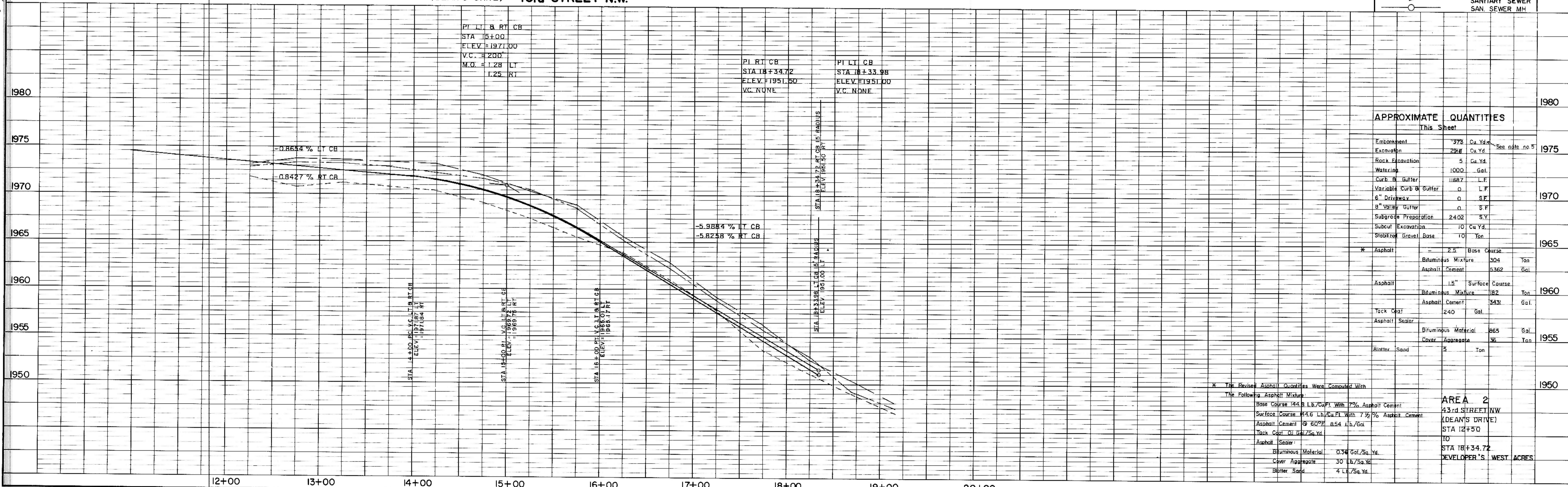


NOTES:

- Sewer and Water Improvements as shown on plans are existing as per date of street improvement plans. Existing Sewer and Water as per "Consolidated Water and Sewer Improvement District No. 24".
- All curb and gutter radii are 15 feet at face of curb unless otherwise stated.
- Proposed grades are to top of curb unless otherwise stated.
- City Engineer shall confirm location of variable curb and gutter for driveways prior to construction of said curb.
- Embankment quantities shown include an assumed 25% shrinkage factor.

LEGEND	
(EXISTING)	CENTERLINE
---	50' LT.
---	50' RT.
(EXISTING)	WATERMANS
W	HYDRANTS
+	GATE VALVES
T	TEES
P	PLUGS
S	SANITARY SEWER
○	SAN. SEWER MH

(DEAN'S DRIVE) 43rd STREET N.W.



APPROXIMATE QUANTITIES

This Sheet

Embankment	378	Cu. Yd.	See note no 5
Excavation	224	Cu. Yd.	
Rock Excavation	5	Cu. Yd.	
Watering	1000	Gal.	
Curb & Gutter	11687	L.F.	
Variable Curb & Gutter	0	L.F.	
6" Driveway	0	S.F.	
8" Valley Gutter	0	S.F.	
Subgrade Preparation	2402	S.Y.	
Subcut Excavation	10	Cu. Yd.	
Stiffening Gravel Base	10	Ton	
Asphalt	25	Base Course	
Bituminous Mixture	304	Ton	
Asphalt Cement	5362	Gal.	
Asphalt	15	Surface Course	
Bituminous Mixture	182	Ton	
Asphalt Cement	3421	Gal.	
Tack Coat	240	Gal.	
Asphalt Sealer			
Bituminous Material	865	Gal.	
Cover Aggregate	36	Ton	
Blotter Sand	5	Ton	

* The Revised Asphalt Quantities Were Computed With The Following Asphalt Mixture:
 Base Course 144 B.L.B./Cu.Ft. With 7% Asphalt Cement
 Surface Course 44.6 Lb./Cu.Ft. With 7 1/2% Asphalt Cement
 Asphalt Cement @ 60°F. 8.54 Lb./Gal.
 Tack Coat 0.1 Gal./Sq. Yd.
 Asphalt Sealer
 Bituminous Material 0.34 Gal./Sq. Yd.
 Cover Aggregate 30 Lb./Sq. Yd.
 Blotter Sand 4 Lb./Sq. Yd.

AREA 2
43rd STREET NW
(DEAN'S DRIVE)
STA 12+50
TO
STA 18+34.72
DEVELOPER'S WEST ACRES