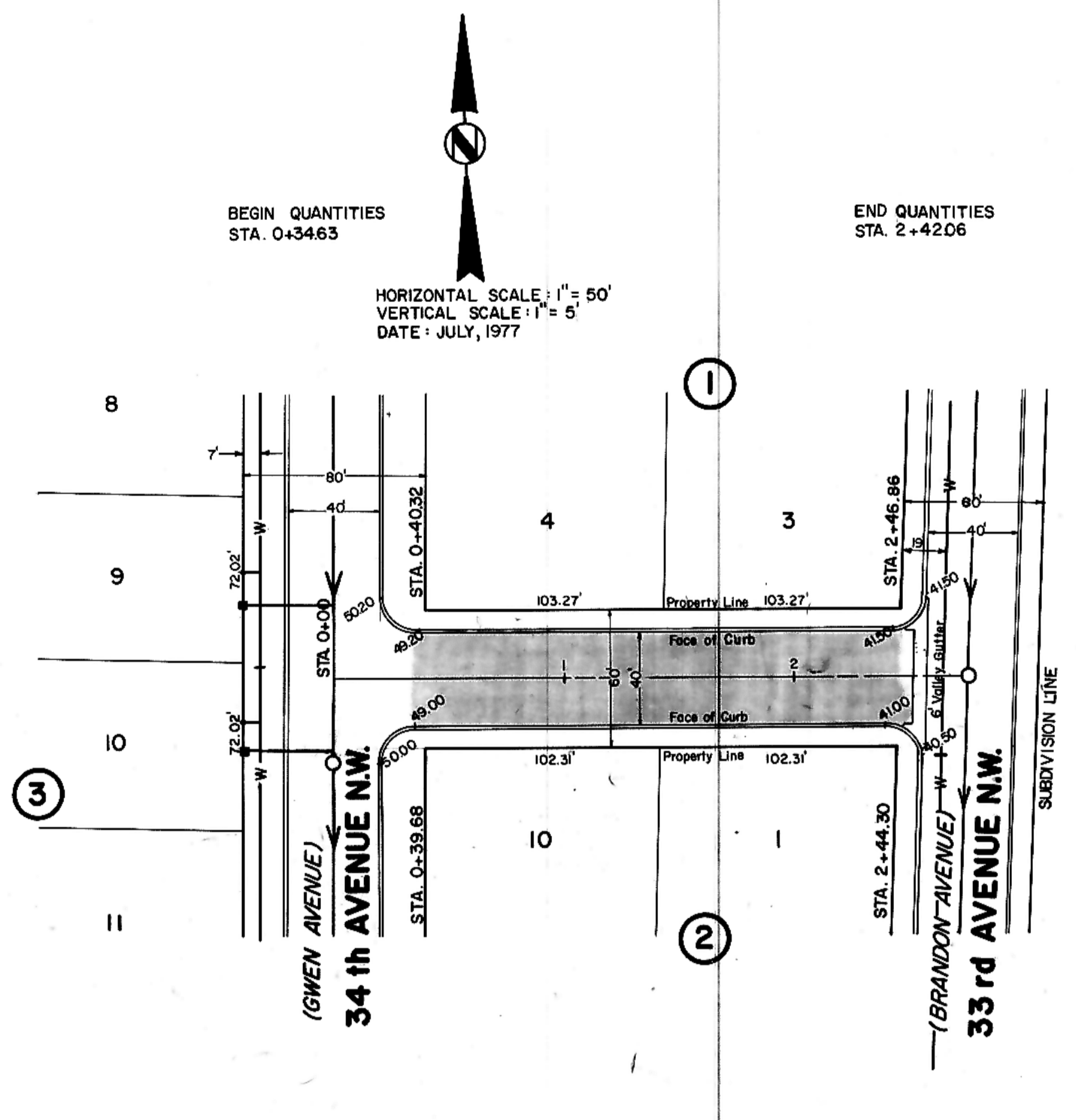
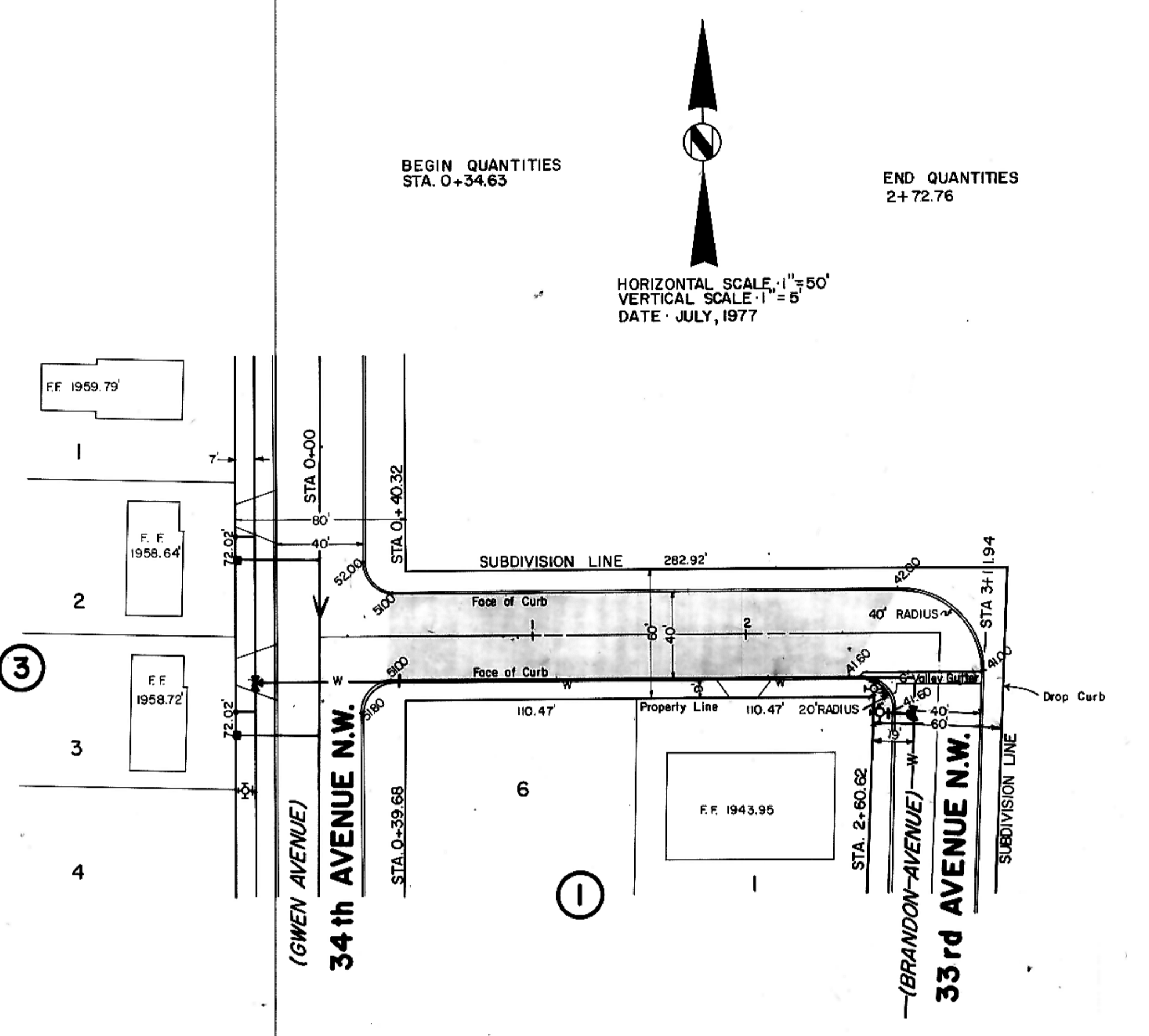


PLAN
 SUBMITTED BY: _____
 DATE: _____
 NOTE BOOK: _____
 NO. _____

PROFILE
 SUBMITTED BY: _____
 DATE: _____
 NOTE BOOK: _____
 NO. _____



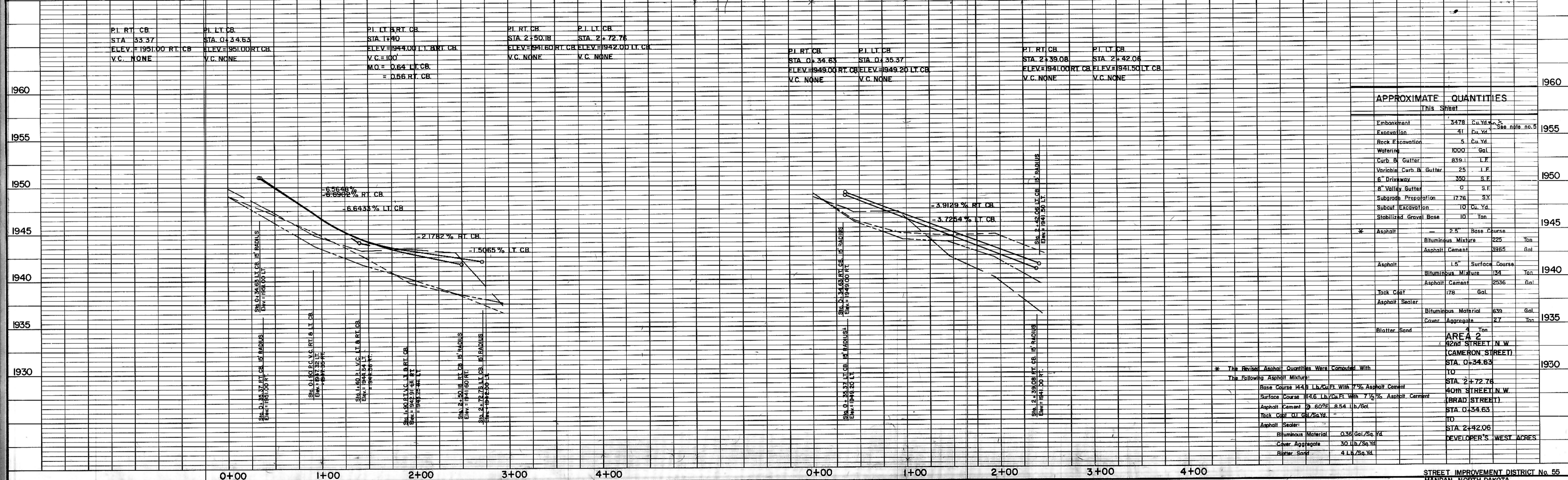
- NOTES:
- Sewer and Water Improvements as shown on plans are existing as per date of street improvement plans. Existing Sewer and Water as per "Consolidated Water and Sewer Improvement District No. 24".
 - All curb and gutter radii are 15 feet at face of curb unless otherwise stated.
 - Proposed grades are to top of curb unless otherwise stated.
 - City Engineer shall confirm location of variable curb and gutter for driveways prior to construction of said curb.
 - Embankment quantities shown include an assumed 25% shrinkage factor.

LEGEND

(EXISTING)	CENTERLINE
(EXISTING)	50' LT.
(EXISTING)	50' RT.
(EXISTING)	WATERMAINS
(EXISTING)	HYDRANTS
(EXISTING)	GATE VALVES
(EXISTING)	TEES
(EXISTING)	PLUGS
(EXISTING)	SANITARY SEWER
(EXISTING)	SAN. SEWER MH

(CAMERON STREET) 42nd STREET N.W.

(BRAD STREET) 40th STREET N.W.



APPROXIMATE QUANTITIES

Item	Quantity	Unit
Embankment	3478	Cu. Yd.
Excavation	41	Cu. Yd.
Rock Excavation	5	Cu. Yd.
Watering	1000	Gal.
Curb & Gutter	859.1	L.F.
Variable Curb & Gutter	25	L.F.
8" Driveway	350	S.F.
8" Valley Gutter	0	S.F.
Subgrade Preparation	1776	S.Y.
Subcut Excavation	10	Cu. Yd.
Stabilized Gravel Base	10	Ton.
Asphalt	225	Base Course
Asphalt Cement	3365	Gal.
Asphalt	15	Surface Course
Asphalt Cement	2536	Gal.
Tack Coat	178	Gal.
Asphalt Sealer	639	Gal.
Blotter Sand	27	Ton.

AREA 2
 42nd STREET N.W.
 (CAMERON STREET)
 STA. 0+34.63
 TO
 STA. 2+72.76
 40th STREET N.W.
 (BRAD STREET)
 STA. 0+34.63
 TO
 STA. 2+42.06
 DEVELOPER'S WEST ACRES.

* The Revised Asphalt Quantities Were Computed With The Following Asphalt Mixture:
 Base Course 14.8 Lb./Cu. Ft. With 7% Asphalt Cement
 Surface Course 14.6 Lb./Cu. Ft. With 7 1/2% Asphalt Cement
 Asphalt Cement @ 60% 8.54 lb./60l
 Tack Coat 11 Gal./Sq. Yd.
 Asphalt Sealer
 Bituminous Material 0.36 Gal./Sq. Yd.
 Cover Aggregate 30 lb./Sq. Yd.
 Blotter Sand 4 Lb./Sq. Yd.