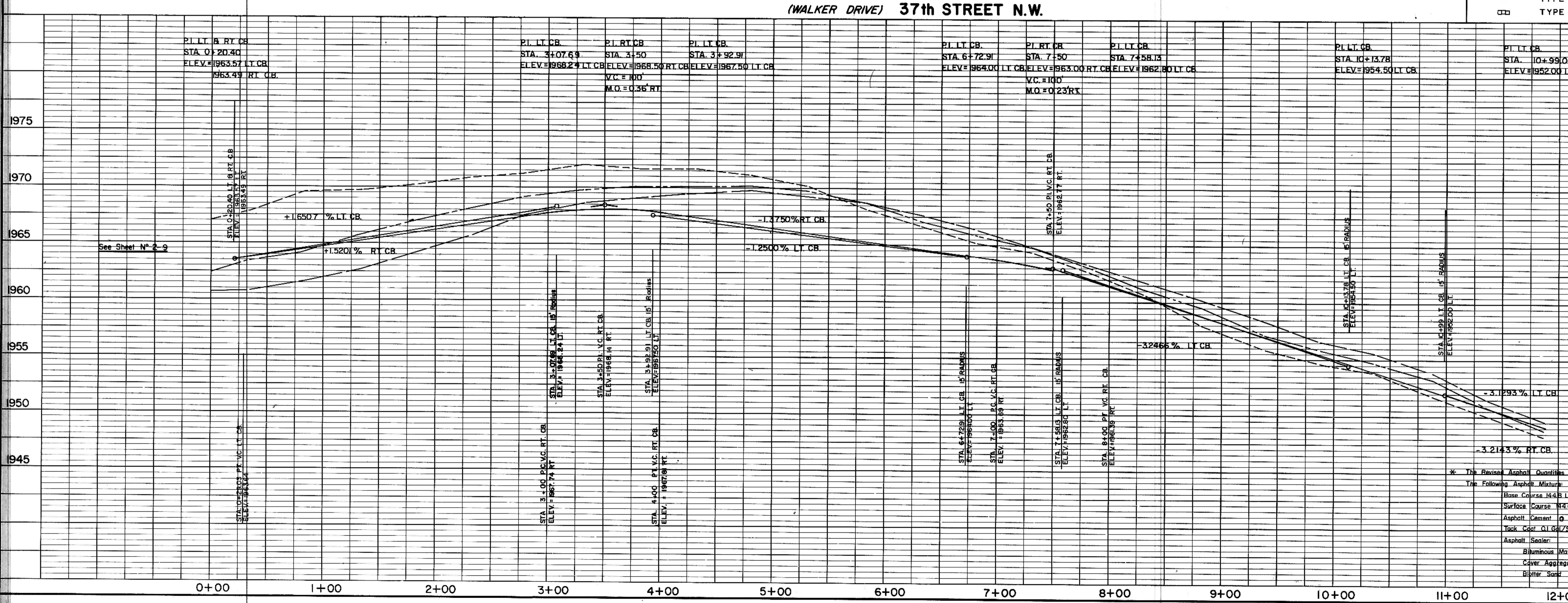
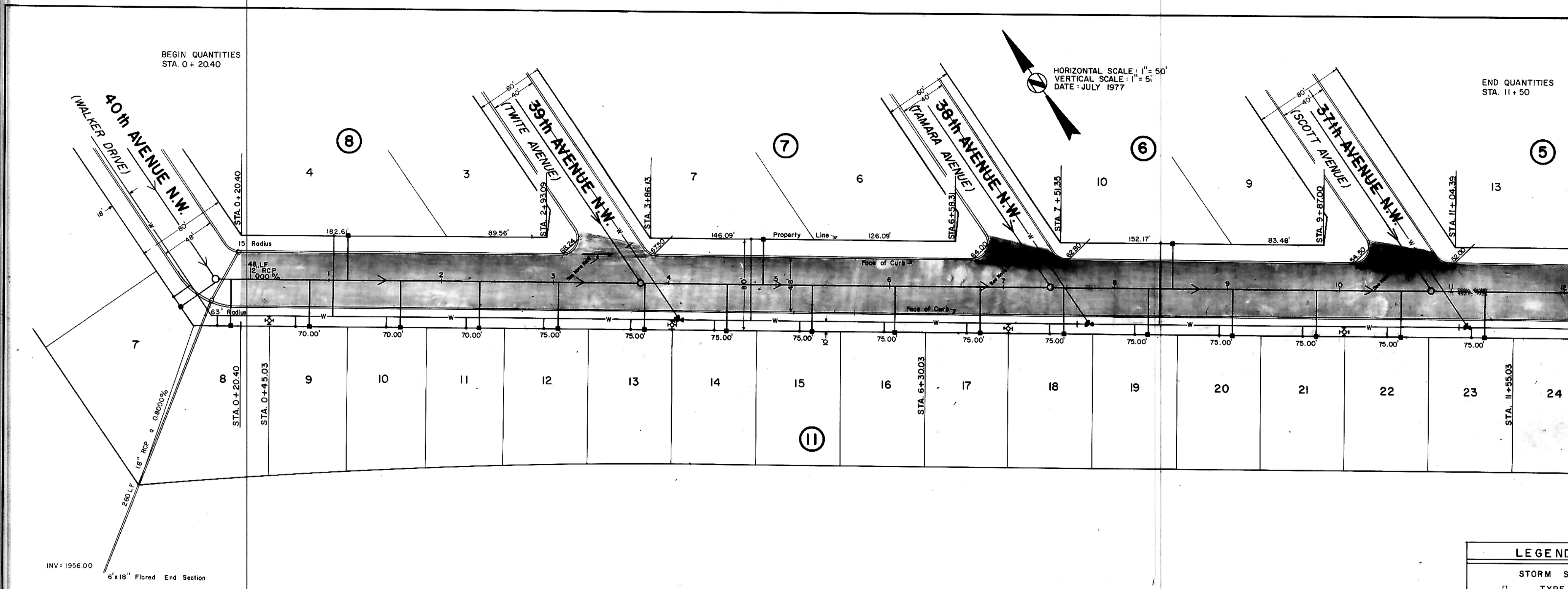


DATE	
BY	
REVISION	
NO.	
DATE	
BY	
REVISION	
NO.	
DATE	
BY	
REVISION	
NO.	

DATE	
BY	
REVISION	
NO.	
DATE	
BY	
REVISION	
NO.	
DATE	
BY	
REVISION	
NO.	



- NOTES:**
- Sewer and Water Improvements as shown on plans are existing as per date of street improvement plans. Existing Sewer and Water as per "Consolidated Water and Sewer Improvement District No. 24".
 - All curb and gutter radii are 15 feet at face of curb unless otherwise stated.
 - Proposed grades are to top of curb unless otherwise stated.
 - City Engineer shall confirm location of variable curb and gutter for driveways prior to construction of said curb.
 - Embankment quantities shown include an assumed 25% shrinkage factor.
 - Depress crown and tip gutter section to allow drainage to flow across intersection as indicated.

LEGEND

—	(EXISTING) CENTERLINE
- - -	50' LT.
- - -	50' RT.
W	(EXISTING) WATERMANS
H	HYDRANTS
G	GATE VALVES
T	TEES
P	PLUGS
S	SANITARY SEWER
NS	SAN. SEWER NH

LEGEND

□	STORM SEWER TYPE A
□	TYPE B
□	TYPE C

APPROXIMATE QUANTITIES

This Sheet	
Embankment	436 Cu. Yd.
Excavation	6480 Cu. Yd.
Rock Excavation	5 Cu. Yd.
Watering	1000 Gal.
Curb & Gutter	2193 L.F.
Variable Curb & Gutter	0 L.F.
8" Driveway	0 S.F.
8" Valley Gutter	0 S.F.
Subgrade Preparation	5959 S.Y.
Subcut Excavation	10 Cu. Yd.
Stabilized Gravel Base	10 Ton
Asphalt	2.5" Base Course
Bituminous Mixture	752 Ton
Asphalt Cement	13,262 Gal.
Asphalt	1.5" Surface Course
Bituminous Mixture	451 Ton
Asphalt Cement	8514 Gal.
Rock Coat	596 Gal.
Asphalt Sealer	596 Gal.
Bituminous Material	2145 Gal.
Cover Aggregate	89 Ton
Blotter Sand	12 Ton
Storm Sewer	NONE

* The Revised Asphalt Quantities Were Computed With The Following Asphalt Mixture:
 Base Course 14.4 Lb./Cu.Ft. With 7% Asphalt Cement
 Surface Course 14.6 Lb./Cu.Ft. With 7.2% Asphalt Cement
 Asphalt Cement @ 60°F 8.54 lb./Gal.
 Rock Coat 0.10 lb./Sq. Yd.
 Asphalt Sealer
 Bituminous Material 0.36 Gal./Sq. Yd.
 Cover Aggregate 30 lb./Sq. Yd.
 Blotter Sand 4 Lb./Sq. Yd.

AREA 2
 37th STREET N.W.
 (WALKER DRIVE)
 STA 0+20.40
 TO
 STA 11+50
 DEVELOPER'S WEST ACRES

STREET IMPROVEMENT DISTRICT No. 55
 MANDAN, NORTH DAKOTA