

DATE: _____
BY: _____
CHECKED: _____
NO. _____

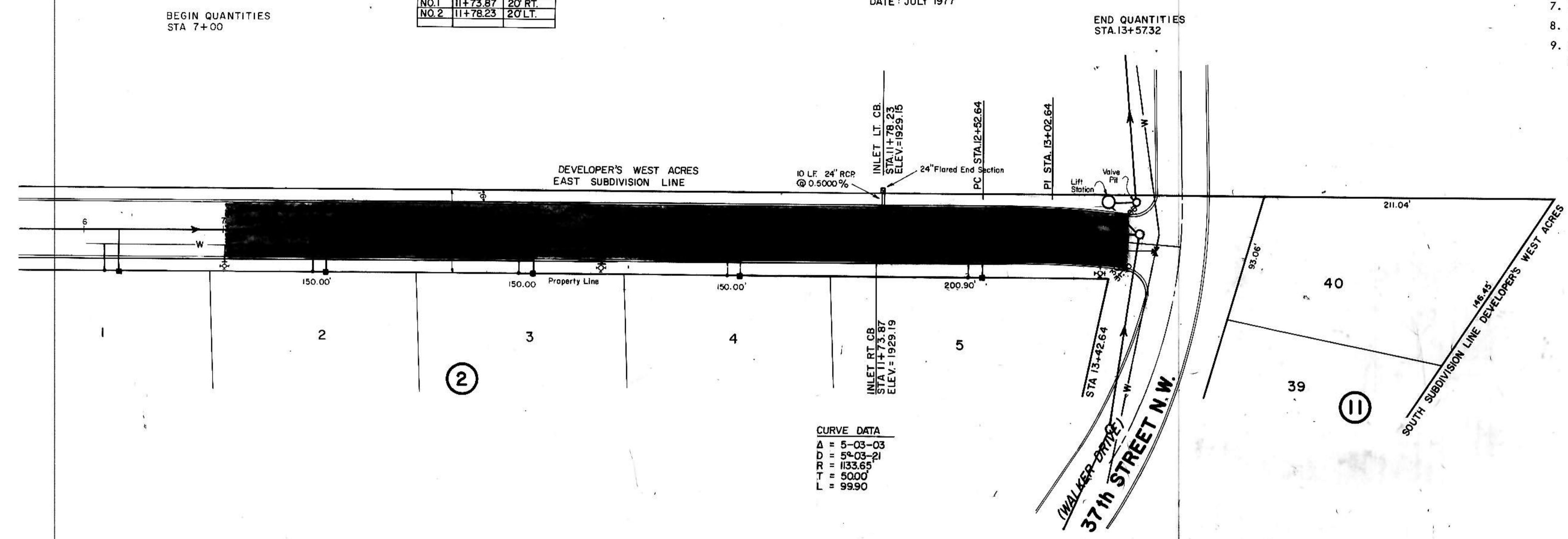
DATE: _____
BY: _____
CHECKED: _____
NO. _____

STORM SEWER INLET		
INLET NO.	1	2
TYPE	C	S
CURB ELEV.	1929.19	1929.15
GUTTER ELEV.	1928.54	1928.50
TOP OF ROCK	1928.00	1927.96
INVERT (L)	1924.23	1924.04
INVERT (R)		1923.90
LENGTH (FC SEC)		

STORM SEWER		
INLET LOCATIONS		
NO. 1	11+73.87	20' RT.
NO. 2	11+78.23	20' LT.

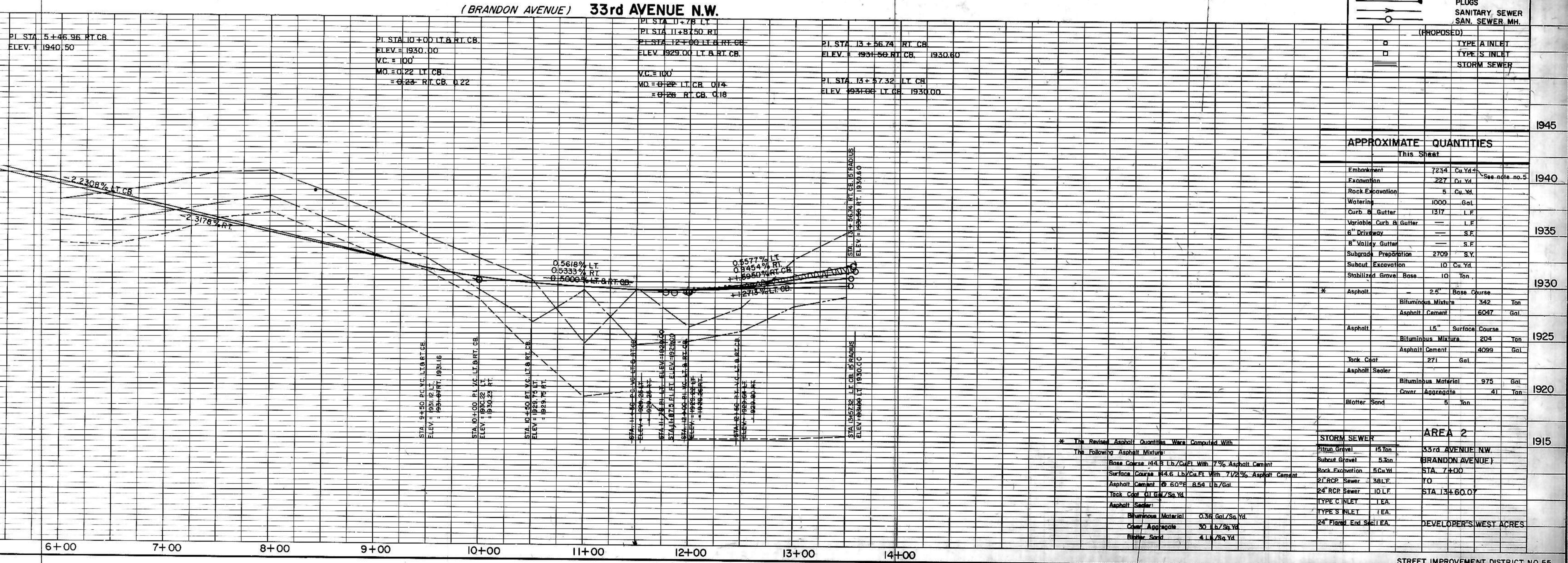
HORIZONTAL SCALE: 1" = 50'
VERTICAL SCALE: 1" = 5'
DATE: JULY 1977

- NOTES:**
- Sewer and Water Improvements as shown on plans are existing as per date of street improvement plans. Existing Sewer and Water as per "Consolidated Water and Sewer Improvement District No. 24".
 - All curb and gutter radii are 15 feet at face of curb unless otherwise stated.
 - Proposed grades are to top of curb unless otherwise stated.
 - City Engineer shall confirm location of variable curb and gutter for driveways prior to construction of said curb.
 - Embankment quantities shown include an assumed 25% shrinkage factor.
 - Stationing for inlets refer to face of curb and center of inlet.
 - Backfill shall be Class "B".
 - Engineer is to verify location of toe of slope and adjust pipe length accordingly.
 - 200 cubic yards rip-rap at storm sewer outlet shall be 12" diameter and smaller and shall be placed as directed by Engineer. 30% of rock shall be 6" - 12". Cost shall be incidental to other items.



LEGEND	
(EXISTING)	CENTERLINE
(EXISTING)	50' LT.
(EXISTING)	50' RT.
(EXISTING)	WATERMAINS
(EXISTING)	HYDRANTS
(EXISTING)	GATE VALVES
(EXISTING)	TEES
(EXISTING)	PLUGS
(EXISTING)	SANITARY SEWER
(EXISTING)	SAN. SEWER MH.
(PROPOSED)	TYPE A INLET
(PROPOSED)	TYPE S INLET
(PROPOSED)	STORM SEWER

CURVE DATA	
A	= 5-03-03
D	= 54-03-21
R	= 1133.65
T	= 5000'
L	= 9990'



APPROXIMATE QUANTITIES		This Sheet	
Embankment	7234	Cu Yd	
Excavation	227	Cu Yd	
Rock Excavation	5	Cu Yd	
Watering	1000	Gal	
Curb & Gutter	1317	L.F.	
Variable Curb & Gutter		L.F.	
6" Driveway		S.F.	
8" Valley Gutter		S.F.	
Subgrade Preparation	2709	S.Y.	
Subcut Excavation	10	Cu Yd	
Stabilized Gravel Base	10	Ton	
Asphalt	2.8"	Base Course	
Bituminous Mixture	342	Ton	
Asphalt Cement	6037	Gal	
Asphalt	1.5"	Surface Course	
Bituminous Mixture	204	Ton	
Asphalt Cement	4099	Gal	
Jack Coat	271	Gal	
Asphalt Sealer			
Bituminous Material	975	Gal	
Cover Aggregate	41	Ton	
Blotter Sand	5	Ton	

* The Revised Asphalt Quantities Were Computed With The Following Asphalt Mixture:

Base Course	144.8	Lb/Cu Ft	With 7% Asphalt Cement
Surface Course	145.6	Lb/Cu Ft	With 7 1/2% Asphalt Cement
Asphalt Cement	6.50%	8.54	Lb/Gal
Track Coat	0.1	Gal/Sq Yd	
Asphalt Sealer			
Bituminous Material	0.36	Gal/Sq Yd	
Cover Aggregate	30	Lb/Sq Yd	
Blotter Sand	4.1	Lb/Sq Yd	

STORM SEWER		AREA 2	
24" RCP	15.00	33rd AVENUE N.W.	
24" RCP	5.00	BRANDON AVENUE	
24" RCP	5.00	STA. 7+00	
24" RCP	381.6	TO	
24" RCP	10 L.F.	STA. 13+60.0	
TYPE C INLET	1 EA.		
TYPE S INLET	1 EA.		
24" Flared End Section	1 EA.	DEVELOPER'S WEST ACRES	

K&M PLATE I, PLAN-PROFILE
KUMPER & ESSER CO.
48 7024 MADE IN U.S.A.