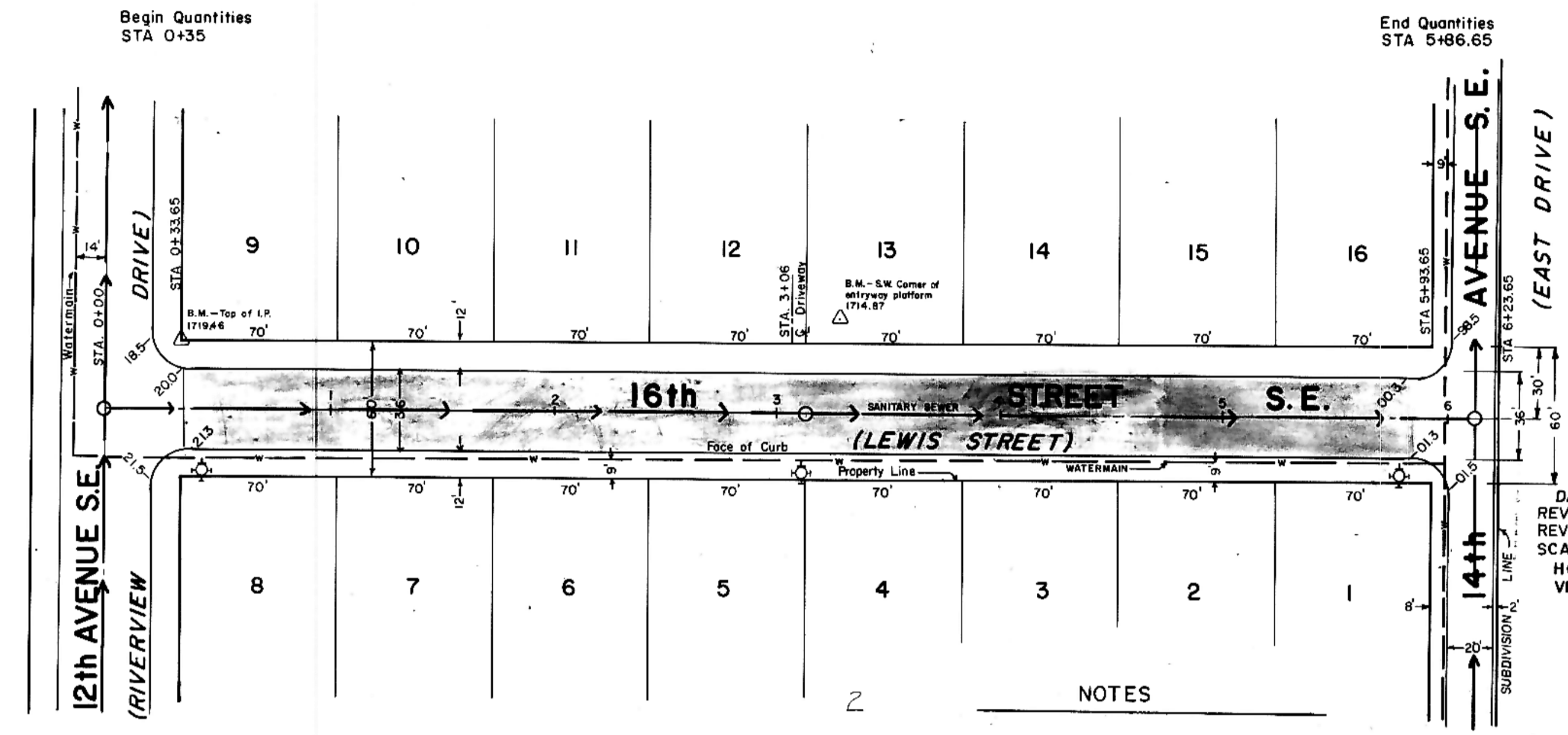
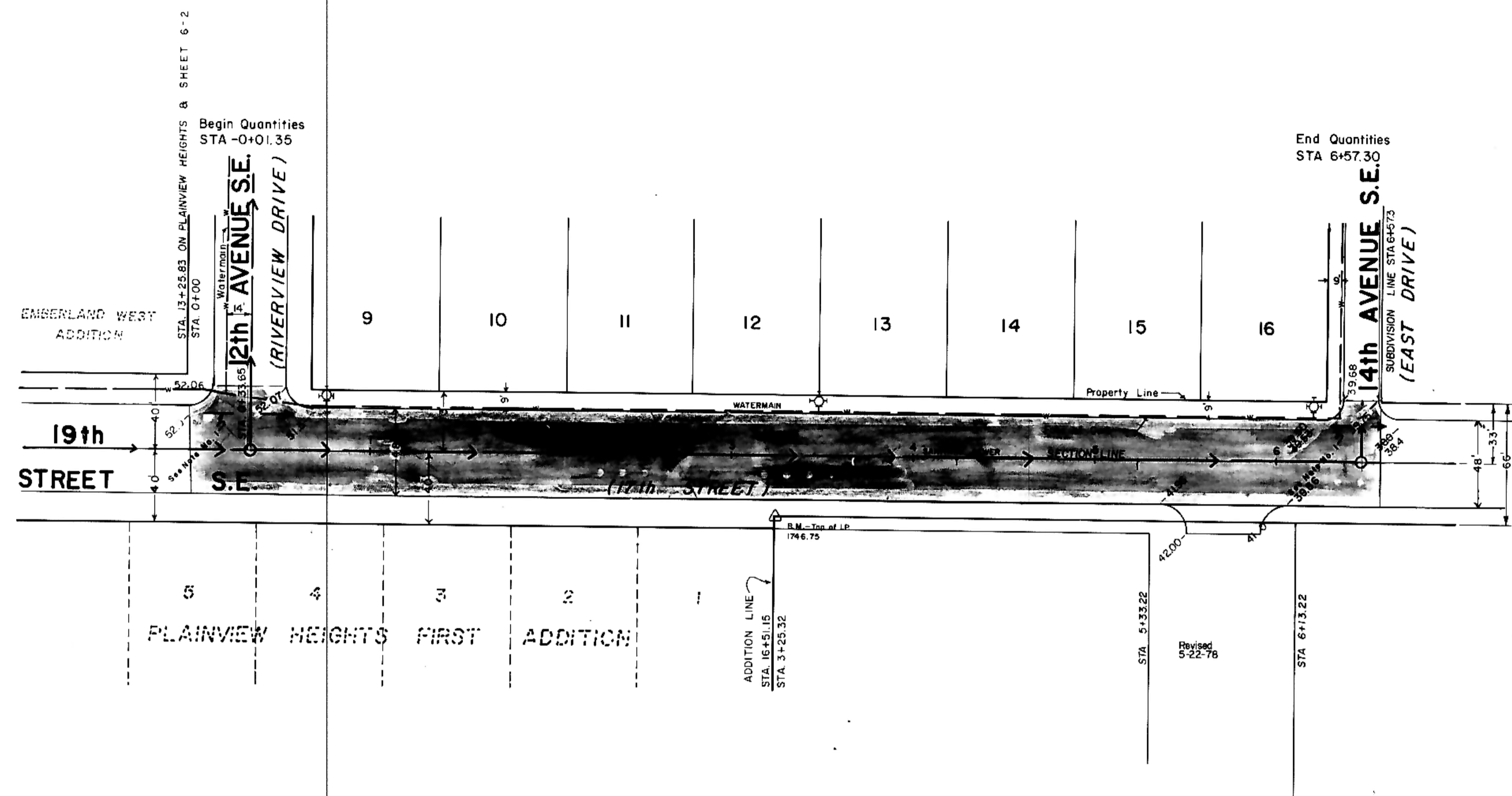


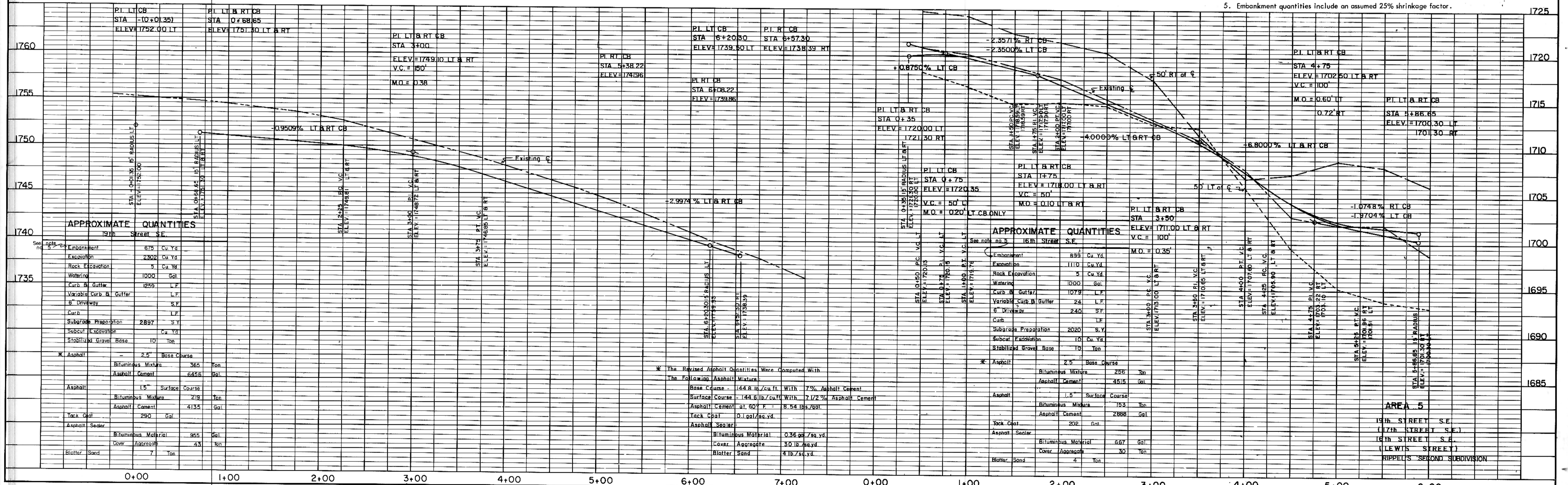
DATE	
BY	
REVISIONS	
NO. DATE	
1. DATE	
2. DATE	
3. DATE	
4. DATE	
5. DATE	
6. DATE	
7. DATE	
8. DATE	
9. DATE	
10. DATE	
11. DATE	
12. DATE	
13. DATE	
14. DATE	
15. DATE	
16. DATE	
17. DATE	
18. DATE	
19. DATE	
20. DATE	
21. DATE	
22. DATE	
23. DATE	
24. DATE	
25. DATE	
26. DATE	
27. DATE	
28. DATE	
29. DATE	
30. DATE	

PLAN
 SURVEYED, PLOTTED, & CHECKED BY: [Signature]
 DATE: [Date]
 NOTE BOOK NO. [Number]
 ALIGNMENT CHECKED BY: [Signature]
 DATE: [Date]
 STRUCTURE INSTALLATIONS CHECKED BY: [Signature]
 DATE: [Date]



Existing Curb
 50' Left
 50' Right
 Manhole
 Sanitary Sewer
 Watermain
 Hydrant
 Gate Valve

- NOTES
- Sewer and Water Improvements as shown on plans are existing as per date of street improvement plans. Existing Sewer and Water as per Consolidated Water and Sewer Improvement District No. 23.
 - All curb and gutter radii are 15 feet at face of curb unless otherwise stated.
 - Proposed grades are to top of curb.
 - City Engineer shall confirm location of variable curb and gutter for driveways prior to construction of said curb.
 - Embankment quantities include an assumed 25% shrinkage factor.



APPROXIMATE QUANTITIES

See note 2	19th Street S.E.	Units
Embankment	875	Cu Yd
Excavation	2302	Cu Yd
Rock Excavation	0	Cu Yd
Watering	1000	Gal
Curb & Gutter	1259	L.F.
Variable Curb & Gutter		L.F.
Driveway		S.F.
Curb		L.F.
Subgrade Preparation	2897	S.Y.
Subcut Excavation		Cu Yd
Stabilized Gravel Base	10	Ton
Asphalt	2.5	Base Course
Bituminous Mixure	365	Ton
Asphalt Cement	6456	Gal
Asphalt	1.5	Surface Course
Bituminous Mixure	219	Ton
Asphalt Cement	4135	Gal
Tack Coat	290	Gal
Asphalt Sealer		
Bituminous Material	955	Gal
Cover Aggregate	43	Ton
Blotter Sand	7	Ton

APPROXIMATE QUANTITIES

See note 2	16th Street S.E.	Units
Embankment	899	Cu Yd
Excavation	1110	Cu Yd
Rock Excavation	5	Cu Yd
Watering	1000	Gal
Curb & Gutter	1079	L.F.
Variable Curb & Gutter	24	L.F.
Driveway	240	S.F.
Curb		L.F.
Subgrade Preparation	2020	S.Y.
Subcut Excavation	10	Cu Yd
Stabilized Gravel Base	10	Ton
Asphalt	2.5	Base Course
Bituminous Mixure	258	Ton
Asphalt Cement	4515	Gal
Asphalt	1.5	Surface Course
Bituminous Mixure	153	Ton
Asphalt Cement	2888	Gal
Tack Coat	292	Gal
Asphalt Sealer		
Bituminous Material	667	Gal
Cover Aggregate	30	Ton
Blotter Sand	4	Ton

* The Revised Asphalt Quantities Were Computed With The Following Asphalt Mixtures

Base Course - 144.8 lb/cu ft. With 7% Asphalt Cement
 Surface Course - 144.6 lb/cu ft. With 7 1/2% Asphalt Cement
 Asphalt Cement at 60° F. = 8.54 lbs/gal.
 Tack Coat = 0.1 gal/sq. yd.
 Asphalt Spreader

Bituminous Material = 0.36 cu ft./sq. yd.
 Cover Aggregate = 30 lb./sq. yd.
 Blotter Sand = 4 lb./sq. yd.