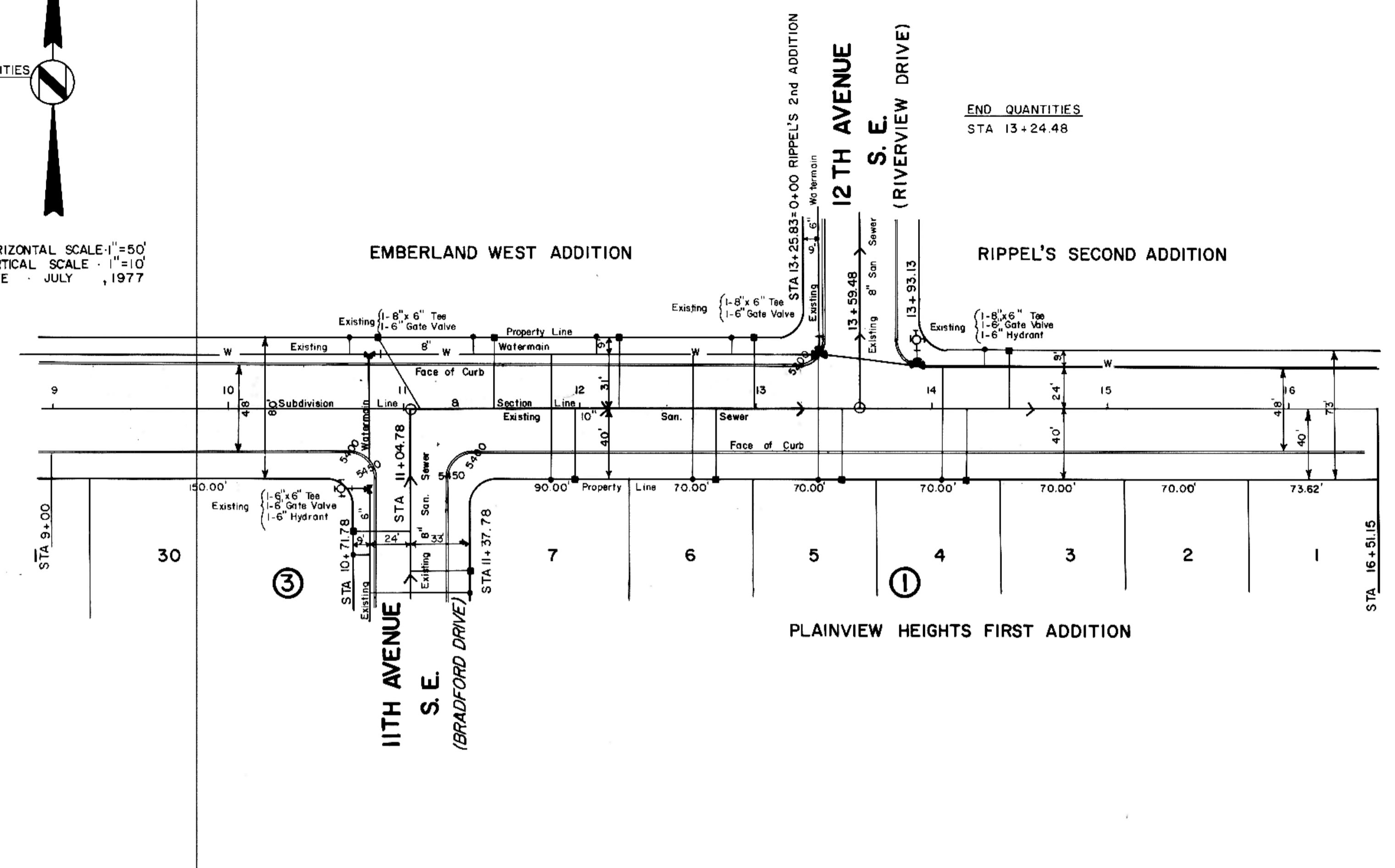


BEGIN QUANTITIES
STA 9+00

HORIZONTAL SCALE - 1"=50'
VERTICAL SCALE - 1"=10'
DATE - JULY 1977

END QUANTITIES
STA 13+24.48



19TH STREET
S. E.
(17TH STREET S. E.)

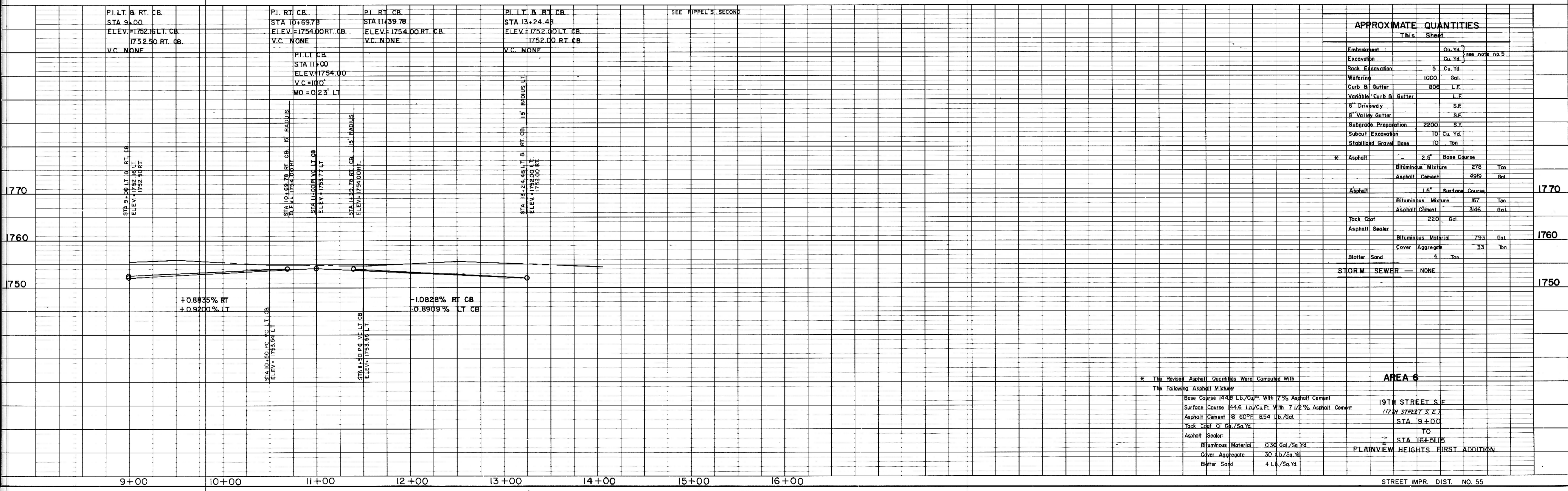
LEGEND	
---	EXISTING
---	50' LT
---	50' RT
---	EXISTING
W	WATERMAIN
H	HYDRANTS
G	GATE VALVES
T	TEE
P	PLUG
S	SANITARY SEWER
SM	SAN SEWER MH

NOTES:

- Sewer and Water Improvements as shown on plans are existing as per date of street improvement plans. Existing Sewer and Water as per "Consolidated Water and Sewer Improvement District No. 23."
- All curb and gutter radii are 15 feet at face of curb unless otherwise stated.
- Proposed grades are to top of curb unless otherwise stated.
- City Engineer shall confirm location of variable curb and gutter for driveways prior to construction of said curb.
- Streets have been graded to within five tenths of a foot of the proposed grades and final grading shall be considered as a one lump sum item for Area No. 6.

PI, LT & RT, CB	PI, RT, CB	PI, RT, CB	PI, LT & RT, CB
STA 9+00	STA 10+69.78	STA 11+439.78	STA 13+24.48
ELEV: 1752.16 LT, CB	ELEV: 1754.00 RT, CB	ELEV: 1754.00 RT, CB	ELEV: 1752.00 LT, CB
VC: NONE	VC: NONE	VC: NONE	VC: NONE

SEE RIPPEL'S SECOND



APPROXIMATE QUANTITIES

	This Sheet	
Embankment	0 Cu. Yd.	
Excavation	5 Cu. Yd.	see note no. 5
Rock Excavation	5 Cu. Yd.	
Watering	1000 Gal.	
Curb & Gutter	806 L.F.	
Variable Curb & Gutter	L.F.	
6" Driveway	S.F.	
8" Valley Gutter	S.F.	
Subgrade Preparation	2200 S.Y.	
Subcut Excavation	10 Cu. Yd.	
Stabilized Gravel Base	10 Ton	
* Asphalt	2.5" Base Course	
	Bituminous Mixture	278 Ton
	Asphalt Cement	4919 Gal.
Asphalt	1.5" Surface Course	1770
	Bituminous Mixture	167 Ton
	Asphalt Cement	3466 Gal.
Tack Coat	220 Gal.	
Asphalt Sealer	Bituminous Material	793 Gal.
	Cover Aggregate	33 Ton
	Blotter Sand	4 Ton
STORM SEWER	NONE	1750

* The Revised Asphalt Quantities Were Computed With The Following Asphalt Mixture:

Base Course	14.8	Lb./Cu. Ft. With 7% Asphalt Cement
Surface Course	14.6	Lb./Cu. Ft. With 7 1/2% Asphalt Cement
Asphalt Cement	8	80% 854 Lb./Gal.
Tack Coat	0.1	Gal./Sq. Yd.
Asphalt Sealer		
Bituminous Material	0.36	Gal./Sq. Yd.
Cover Aggregate	30	Lb./Sq. Yd.
Blotter Sand	4.14	Lb./Sq. Yd.

AREA 6

19TH STREET S.E.
(17TH STREET S.E.)
STA 9+00
TO
STA 16+51.5
PLAINVIEW HEIGHTS FIRST ADDITION

DATE	BY

PLAN
NOTE BOOK
No.

DATE	BY

PROFILE
NOTE BOOK
No.