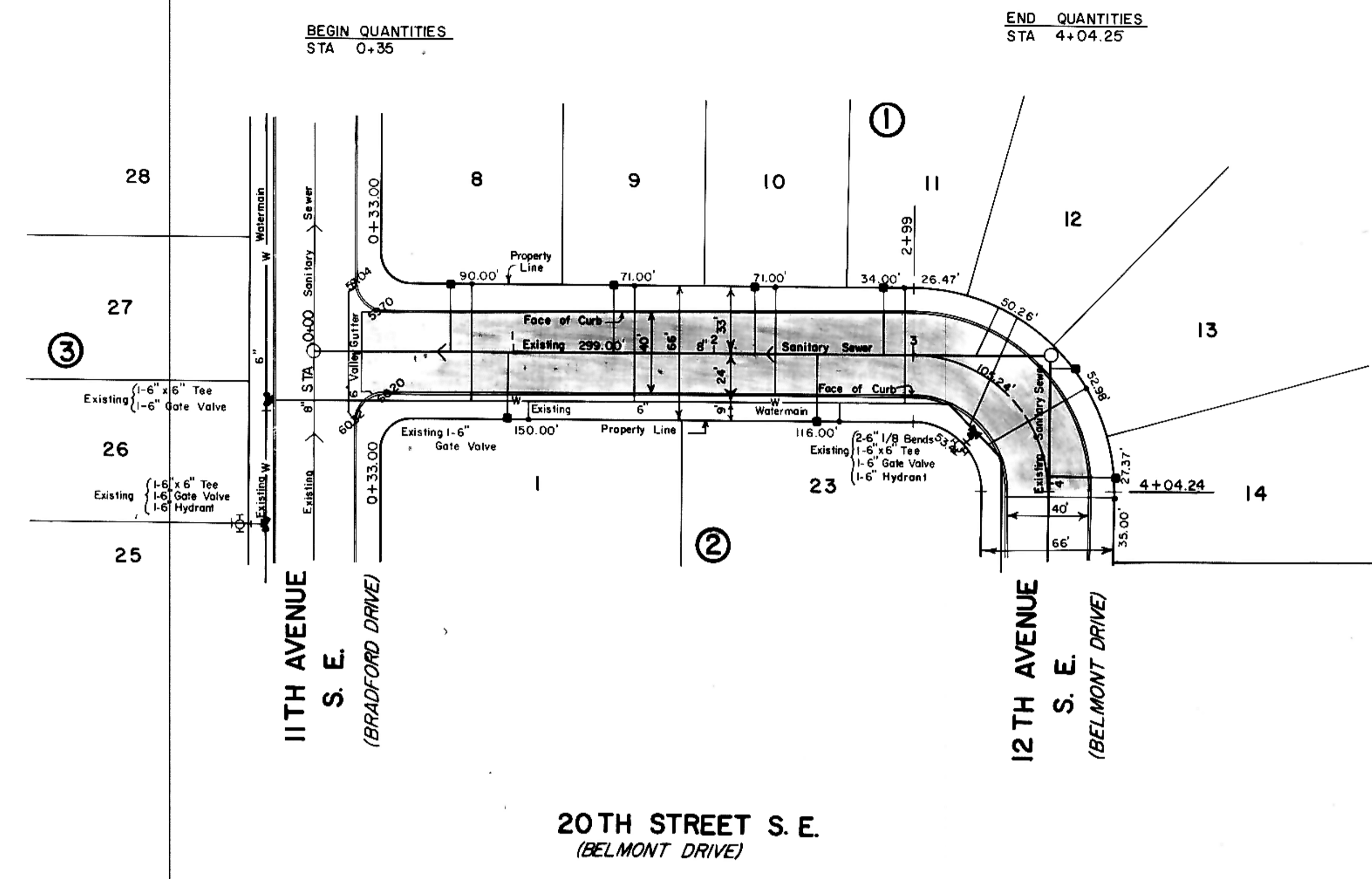




HORIZONTAL SCALE: 1"=50'
 VERTICAL SCALE: 1"=10'
 DATE: JULY, 1977

PLAN
 NOTE BOOK
 No. _____

PROFILE
 NOTE BOOK
 No. _____

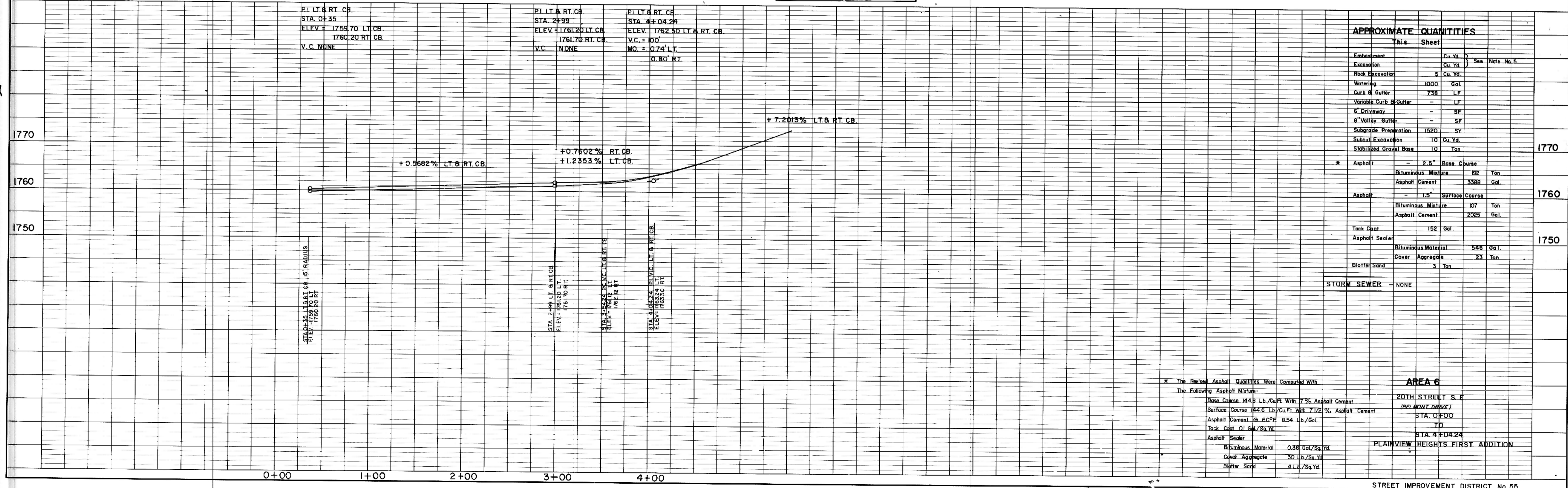


LEGEND	
---	EXISTING
- - - -	50' LT
- - - -	50' RT
W	EXISTING WATERMAIN
H	HYDRANTS
G	GATE VALVE
T	TEE
P	PLUG
S	SANITARY SEWER
M	SAN. SEWER MH

NOTES:

1. Sewer and Water Improvements as shown on plans are existing as per date of street improvement plans. Existing Sewer and Water as per "Consolidated Water and Sewer Improvement District No. 23."
2. All curb and gutter radii are 15 feet at face of curb unless otherwise stated.
3. Proposed grades are to top of curb unless otherwise stated.
4. City Engineer shall confirm location of variable curb and gutter for driveways prior to construction of said curb.
5. Streets have been graded to within five tenths of a foot of the proposed grades and final grading shall be considered as a one lump sum item for Area No. 6.

20TH STREET S. E.
 (BELMONT DRIVE)



APPROXIMATE QUANTITIES			
	This Sheet		
Embankment	Cu. Yd.		
Excavation	Cu. Yd.		
Back Excavation	5 Cu. Yd.		
Watering	1000 Gal.		
Curbs & Gutter	738 LF		
Variable Curb & Gutter	- LF		
6" Driveway	- SF		
8" Valley Gutter	- SF		
Subgrade Preparation	1520 SY		
Subcut Excavation	10 Cu. Yd.		
Stabilized Gravel Base	10 Ton		
* Asphalt	- 2.5" Base Course		
	Bituminous Mixture	192 Ton	
	Asphalt Cement	3388 Gal.	
Asphalt	- 1.5" Surface Course		
	Bituminous Mixture	107 Ton	
	Asphalt Cement	2025 Gal.	
Tack Coat	152 Gal.		
Asphalt Sealer			
	Bituminous Material	536 Gal.	
	Cover Aggregate	23 Ton	
	Blotter Sand	3 Ton	
STORM SEWER	- NONE		

* The Revised Asphalt Quantities Were Computed With
 The Following Asphalt Mixture:
 Base Course 1448 Lb./Cu.Ft. With 7% Asphalt Cement
 Surface Course 1416 Lb./Cu.Ft. With 7 1/2% Asphalt Cement
 Asphalt Cement @ 60°F 8.54 Lb./Gal.
 Tack Coat 0.1 Gal./Sq.Yd.
 Asphalt Sealer
 Bituminous Material 0.36 Gal./Sq.Yd.
 Cover Aggregate 30 Lb./Sq.Yd.
 Blotter Sand 4 Lb./Sq.Yd.

AREA 6
 20TH STREET S. E.
 (BELMONT DRIVE)
 STA. 0+00 TO
 STA. 4+04.25
 PLAINVIEW HEIGHTS FIRST ADDITION