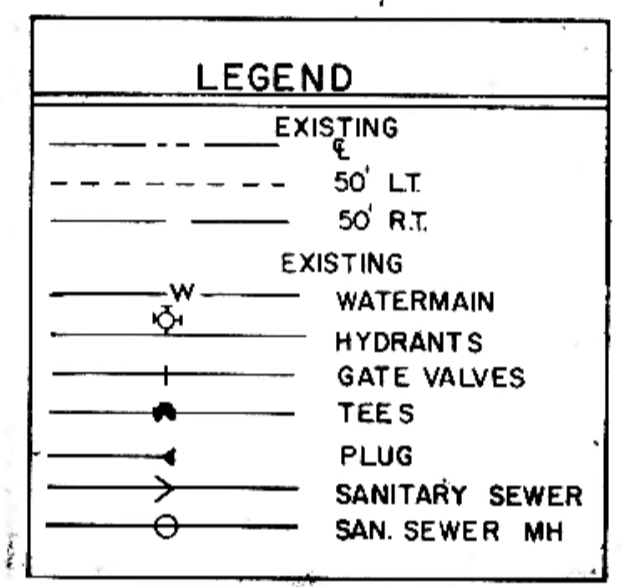
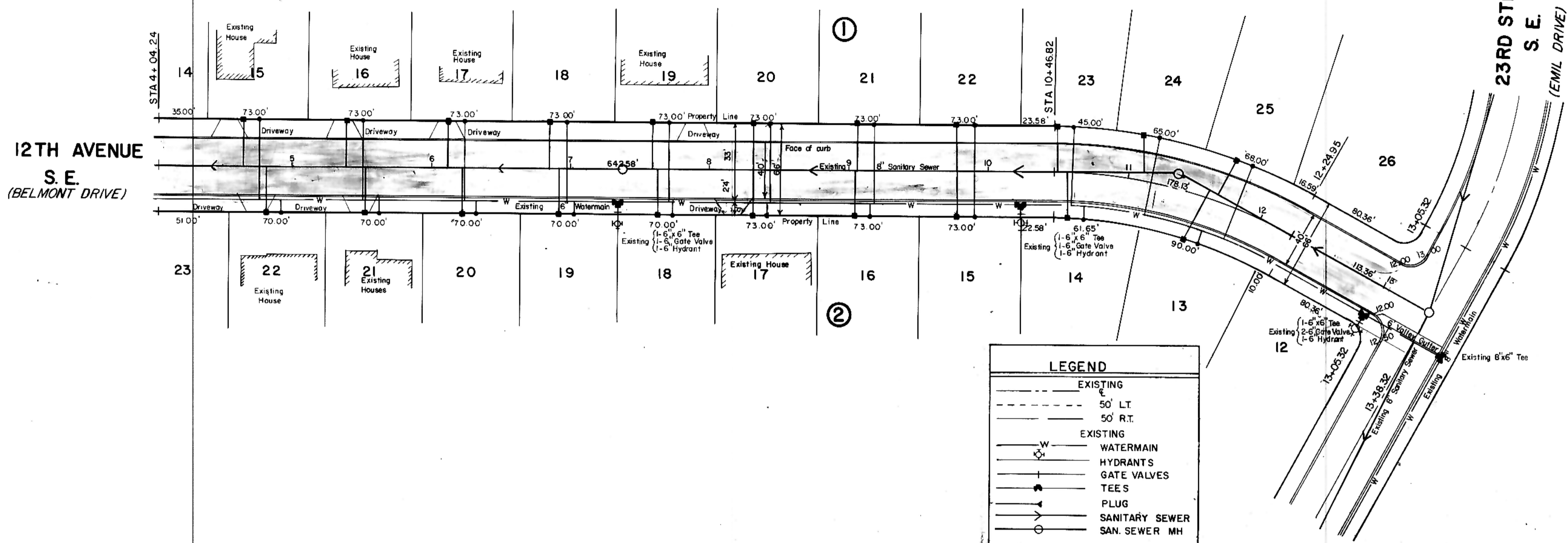


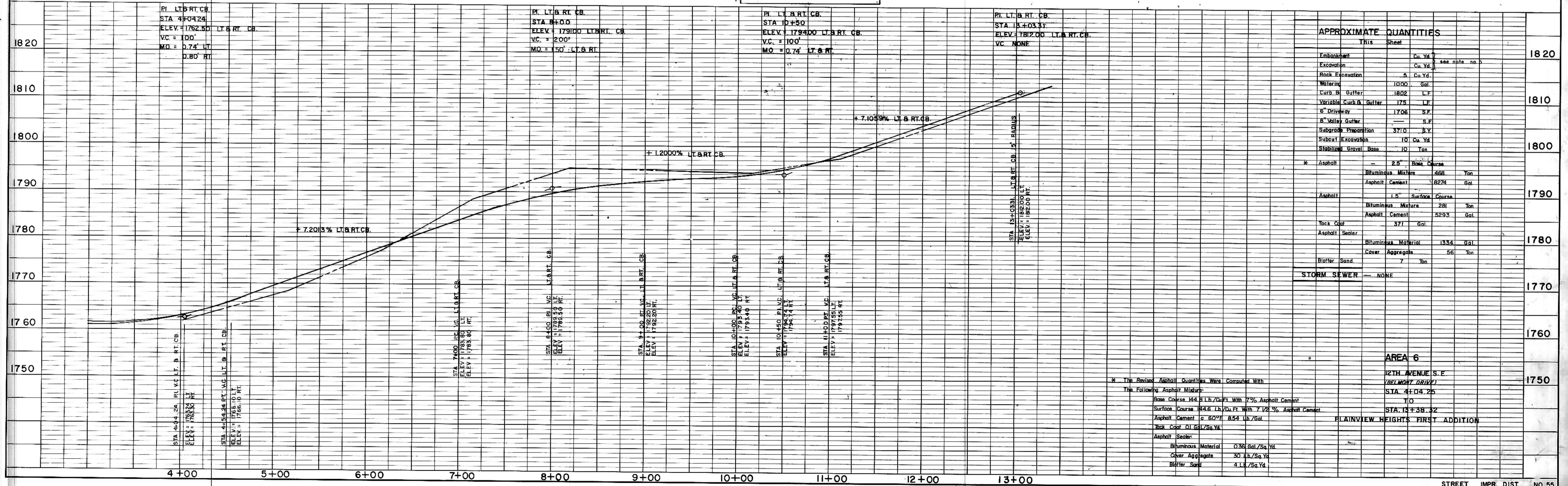
BEGIN QUANTITIES
STA 4+04.24

HORIZONTAL SCALE: 1"=50'
VERTICAL SCALE: 1"=10'
DATE: JULY, 1977

END QUANTITIES
STA 13+03.31



- NOTES:
- Sewer and Water Improvements as shown on plans are existing as per date of street improvement plans. Existing Sewer and Water as per "Consolidated Water and Sewer Improvement District No. 23."
 - All curb and gutter radii are 15 feet at face of curb unless otherwise stated.
 - Proposed grades are to top of curb unless otherwise stated.
 - City Engineer shall confirm location of variable curb and gutter for driveways prior to construction of said curb.
 - Streets have been graded to within five tenths of a foot of the proposed grades and final grading shall be considered as a one lump sum item for Area No. 6.



APPROXIMATE QUANTITIES		
	This Sheet	
Embankment	Cu. Yd.	1820
Excavation	Cu. Yd.	see note no. 1
Rock Excavation	5 Cu. Yd.	
Watering	1000 Gal.	
Curb & Gutter	1802 L.F.	1810
Variable Curb & Gutter	175 L.F.	
8" Driveway	1706 S.F.	
8" Valley Gutter	S.F.	
Subgrade Preparation	3710 S.Y.	
Subcut Excavation	10 Cu. Yd.	1800
Stabilized Gravel Base	10 Ton	
* Asphalt	2.5" Base Course	
	Bituminous Mixture	468 Ton
	Asphalt Cement	824 Gal.
Asphalt	1.5" Surface Course	1790
	Bituminous Mixture	281 Ton
	Asphalt Cement	529 Gal.
Tack Coat	371 Gal.	1780
Asphalt Sealer	Bituminous Material	1334 Gal.
	Cover Aggregate	56 Ton
Blotter Sand	7 Ton	1770
STORM SEWER	NONE	1760

AREA 6
12TH AVENUE S.E.
(BELMONT DRIVE)
STA 4+04.25
T.O.
STA 13+38.32
PLAINVIEW HEIGHTS FIRST ADDITION

* The Revised Asphalt Quantities Were Computed With
The Following Asphalt Mixture:
Base Course 144.8 Lb./Sq. Ft. With 7% Asphalt Cement
Surface Course 84.6 Lb./Sq. Ft. With 7 1/2% Asphalt Cement
Asphalt Cement @ 80°F 8.54 Lb./Gal.
Tack Coat 0.1 Gal./Sq. Yd.
Asphalt Sealer
Bituminous Material 0.36 Gal./Sq. Yd.
Cover Aggregate 30 Lb./Sq. Yd.
Blotter Sand 4 Lb./Sq. Yd.

DATE: _____
BY: _____
CHECKED: _____
SUPERVISOR: _____

DATE: _____
BY: _____
CHECKED: _____
SUPERVISOR: _____