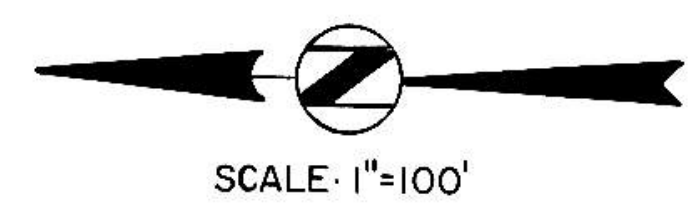


STREET IMPROVEMENT DISTRICT NO. 55 PROJECT LAYOUT



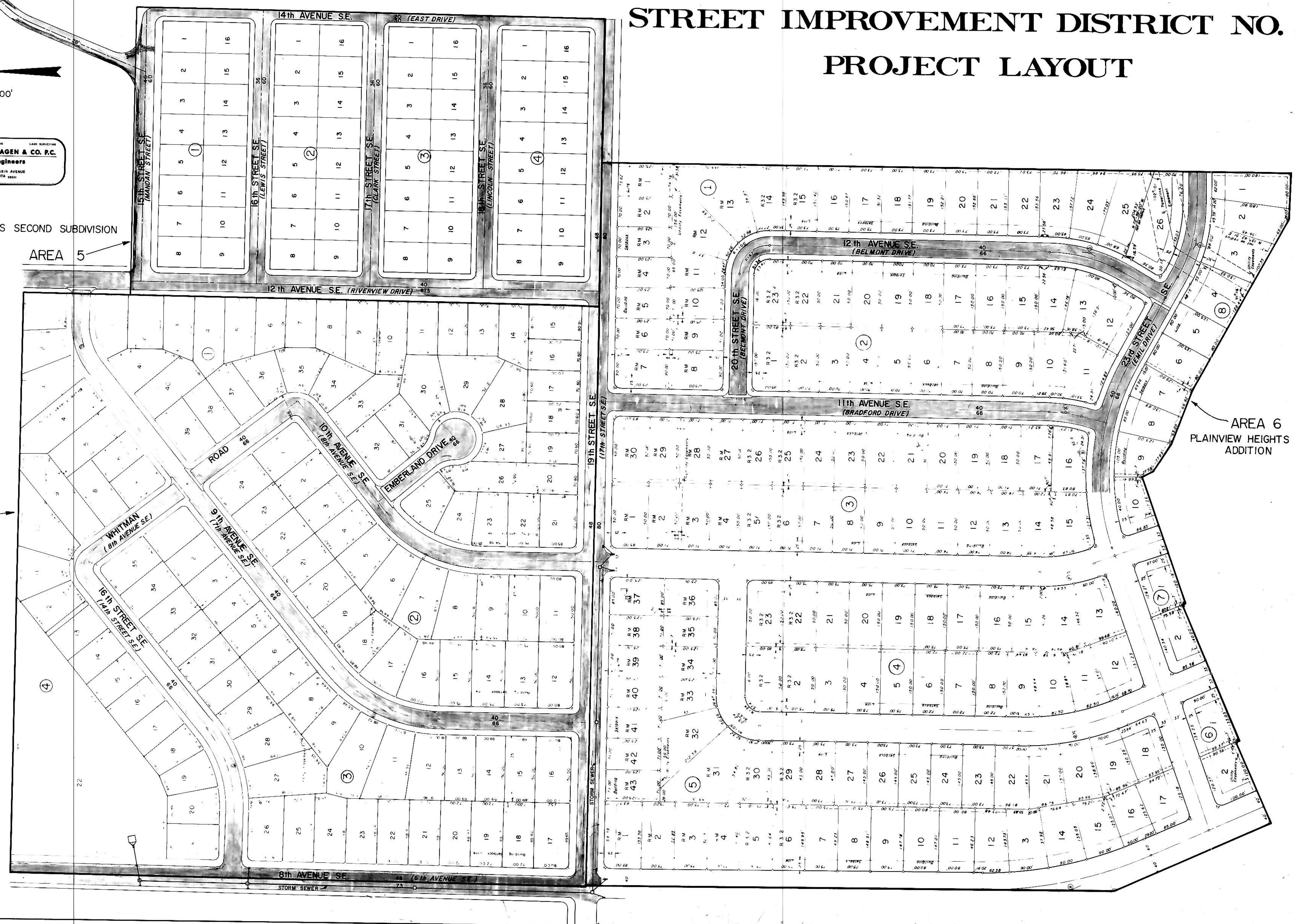
CIVIL ENGINEER LAND PLANNER LAND SURVEYOR
SWENSON, HAGEN & CO. P.C.
 Consulting Engineers
 PO BOX 1125, 808 BASIN AVENUE
 BISMARCK, NORTH DAKOTA 58501
 701-223-8800

RIPEL'S SECOND SUBDIVISION

AREA 5

AREA 1
 EMBERLAND WEST

40 - Paving Width
 66 - Right of Way Width



AREA 6
 PLAINVIEW HEIGHTS FIRST
 ADDITION