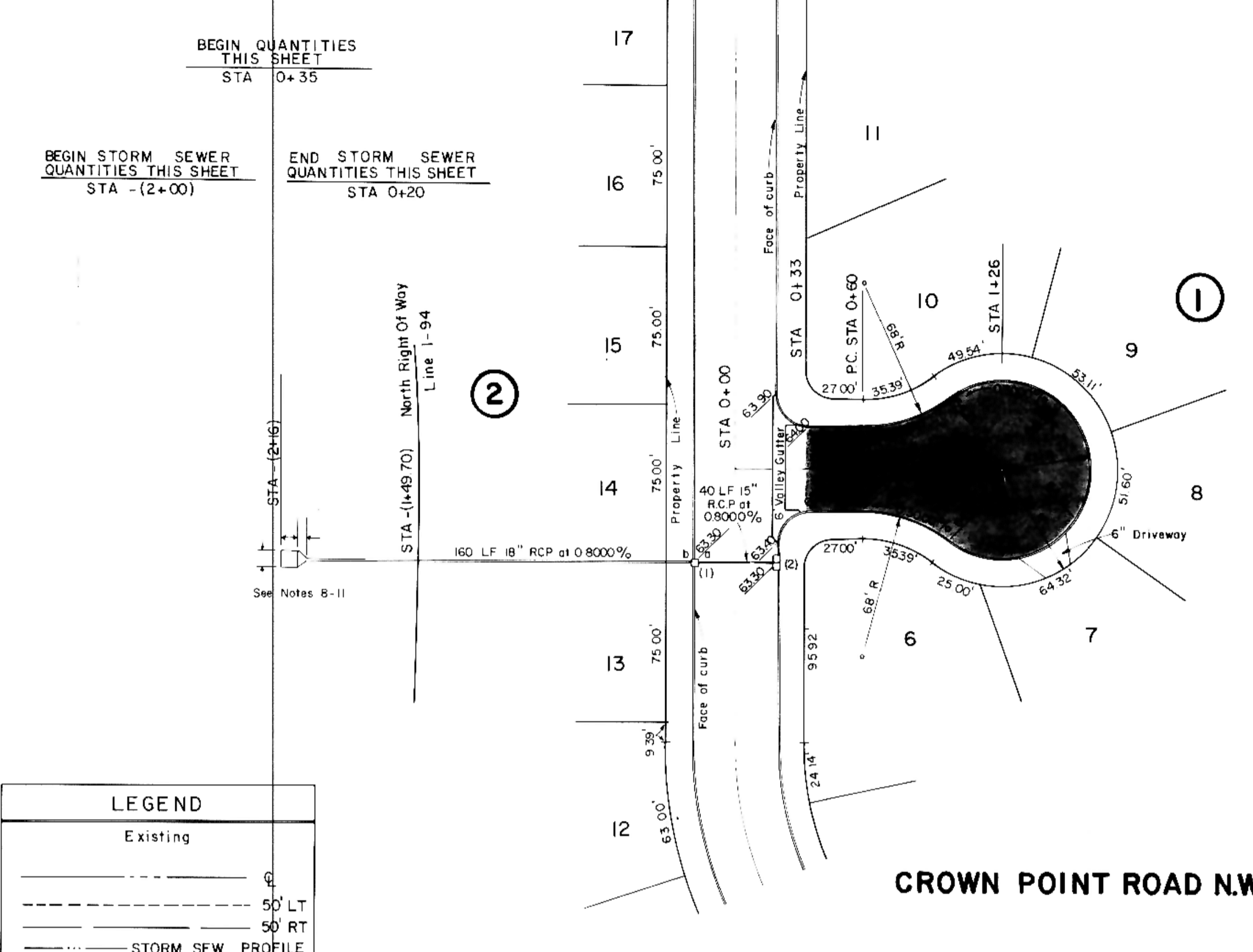


DATE	
BY	
REVISION	
NO.	
PLAN	
NOTE BOOK	
NO.	

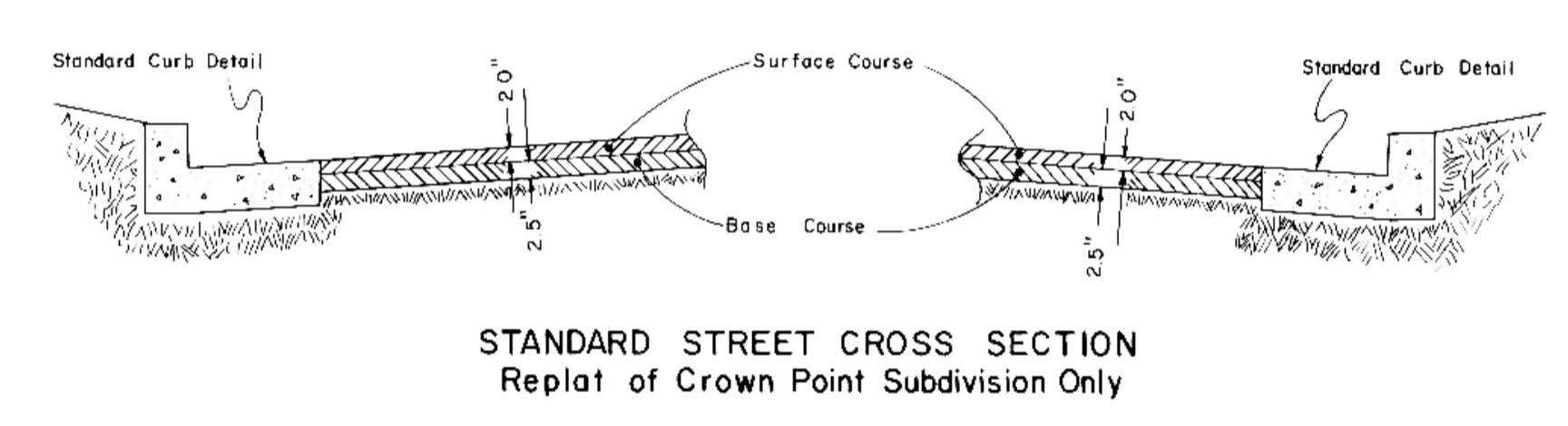
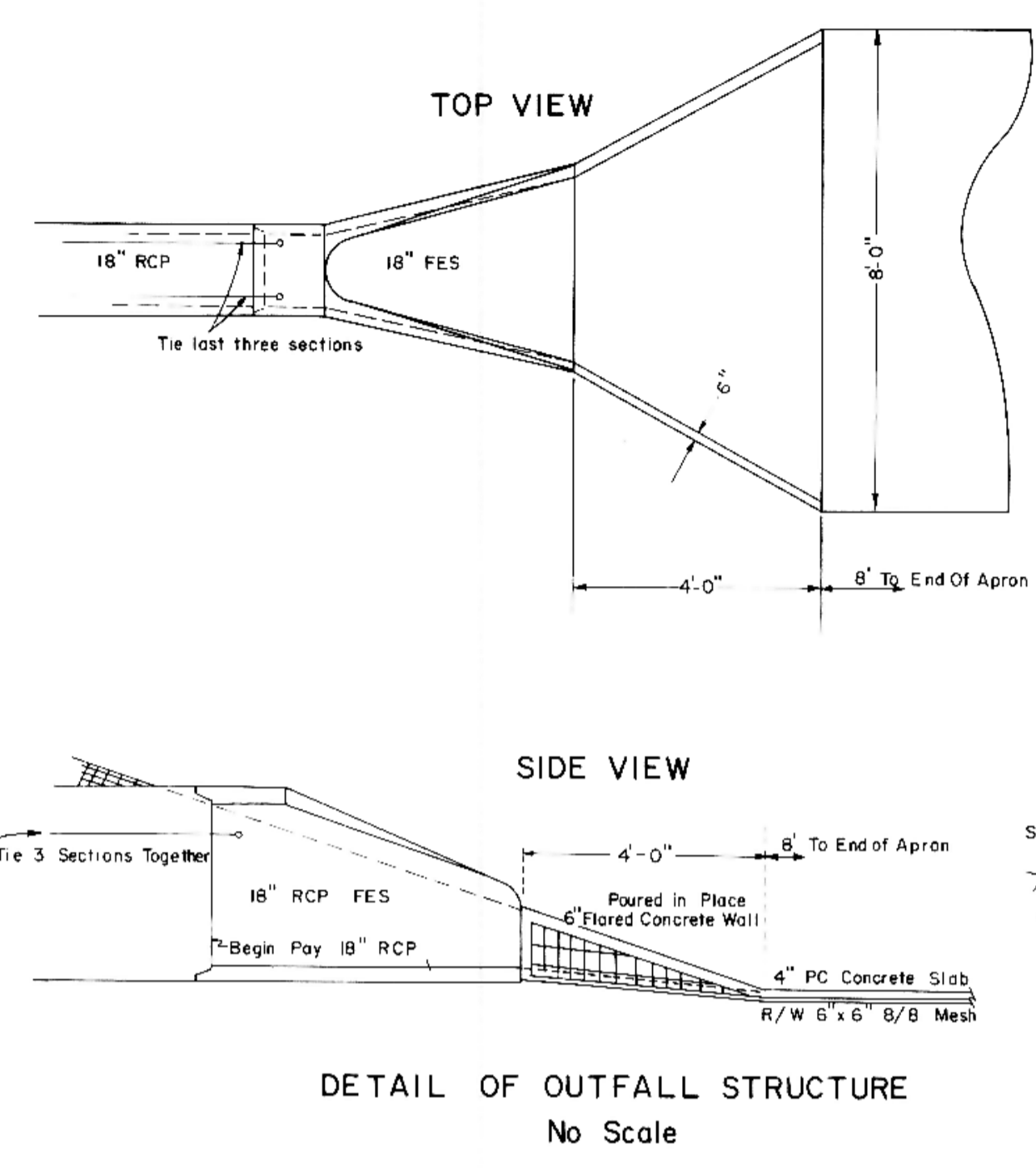
DATE	
BY	
REVISION	
NO.	
PROFILE	
NOTE BOOK	
NO.	



END QUANTITIES THIS SHEET
STA 1+68

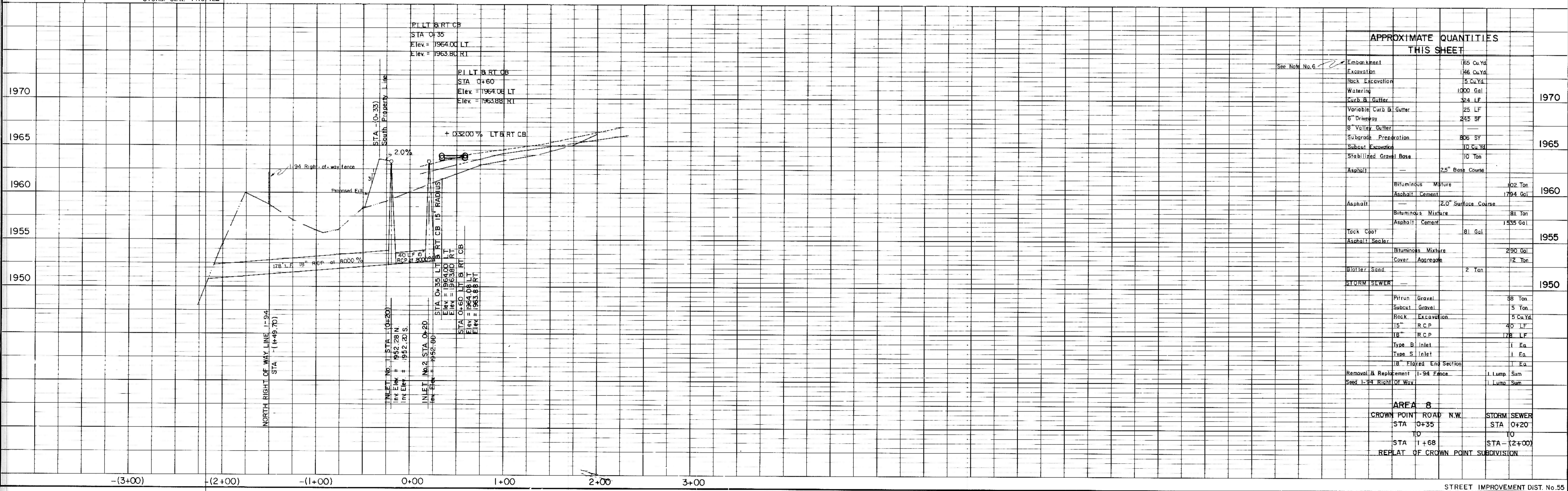
HORIZONTAL SCALE: 1" = 50'
VERTICAL SCALE: 1" = 5'
DATE: DECEMBER, 1977

INLET No.	1	2
TYPE	S	B
CURB ELEV.	1963.30	1963.30
GUTTER ELEV.	1962.65	1962.65
TOP OF ROOF	1962.11	1962.11
INVERT (a)	1952.28	1952.60
INVERT (b)	1952.20	1952.60
PRECAST SECT.	9'-4"	



- ### NOTES
- Proposed sewer and water improvements for Crown Point Road are shown on plans for "Consolidated Sewer and Water Improvement District No. 25". Said sewer and water improvements shall be installed prior to any street improvements except earthwork and contractor shall be responsible for the preservation of said sewer and water improvements during construction.
 - Proposed grades are to the top of the curb unless otherwise stated.
 - All curb and gutter radii are 15 feet at the face of curb unless otherwise stated.
 - Stationing for inlets refers to face of curb and center of inlet.
 - All backfill on this sheet shall be Class "B".
 - Earthwork quantities include the removal of topsoil. Topsoil may be used as fill in the embankment area outside the right-of-way. Embankment quantities shown include an assumed 20% shrinkage factor.
 - The following is the asphalt mixture that was used to compute the quantities. This is not necessarily the design mix that will be used:
 Base Course 144.8 lb/cu. ft. with 7% asphalt cement.
 Surface Course 144.6 lb/cu. ft. with 7 1/2% asphalt cement.
 Asphalt Cement at 60° F. = 8.54 lbs./gal.
 Tack Coat 0.1 gal./sq. yd.
 Asphalt Sealer Bituminous Material 0.36 gal./sq. yd.
 Cover Aggregate 30 lbs./sq. yd.
 - Engineer is to verify location of toe of slope and adjust pipe length accordingly.
 - Poured in place concrete outfall structure to be considered incidental to flared end section.
 - Contractor shall provide approximately 50 yards embankment to provide a minimum of 1 foot cover over storm sewer. This shall be paid for by the cubic yard in place.
 - Removal and replacement of topsoil in the 1-94 right-of-way shall be considered incidental to the other bid items. Contractor shall restore 1-94 right-of-way to its original condition or better as specified by N.D. State Highway Department Standard Specifications.
 - Seeding in State Highway Right-of-Way shall be as specified in Section 890-Seed-N.D. State Highway Standard Specifications.

Existing	—
50' LT	- - - -
50' RT	- - - -
STORM SEW. PROFILE	—



Item	Quantity	Unit
Embankment	165	Cu Yd
Excavation	146	Cu Yd
Rock Excavation	5	Cu Yd
Watering	1000	Gal
Curb & Gutter	324	LF
Variable Curb & Gutter	25	LF
6" Driveway	245	SF
8" Valley Gutter	—	—
Subgrade Preparation	806	SY
Subcut Excavation	10	Cu Yd
Stabilized Gravel Base	10	Ton
Asphalt	—	2.5" Base Course
Bituminous Mixture	102	Ton
Asphalt Cement	1794	Gal
Asphalt	—	2.0" Surface Course
Bituminous Mixture	81	Ton
Asphalt Cement	1435	Gal
Tack Coat	81	Gal
Asphalt Sealer	—	—
Bituminous Mixture	290	Gal
Cover Aggregate	12	Ton
Blotter Sand	2	Ton
STORM SEWER	—	—
Pitrun Gravel	58	Ton
Subcut Gravel	5	Ton
Rock Excavation	5	Cu Yd
15" R.C.P.	40	LF
18" R.C.P.	178	LF
Type B Inlet	1	Ea
Type S Inlet	1	Ea
18" Flared End Section	1	Ea
Removal & Replacement 1-94 Fence	1	Lump Sum
Seed 1-94 Right Of Way	1	Lump Sum

Item	Quantity	Unit
CROWN POINT ROAD N.W.	—	—
STA 0+35	—	—
STA 1+68	—	—
STORM SEWER	—	—
STA 0+20	—	—
STA 1+68	—	—
REPLAT OF CROWN POINT SUBDIVISION	—	—