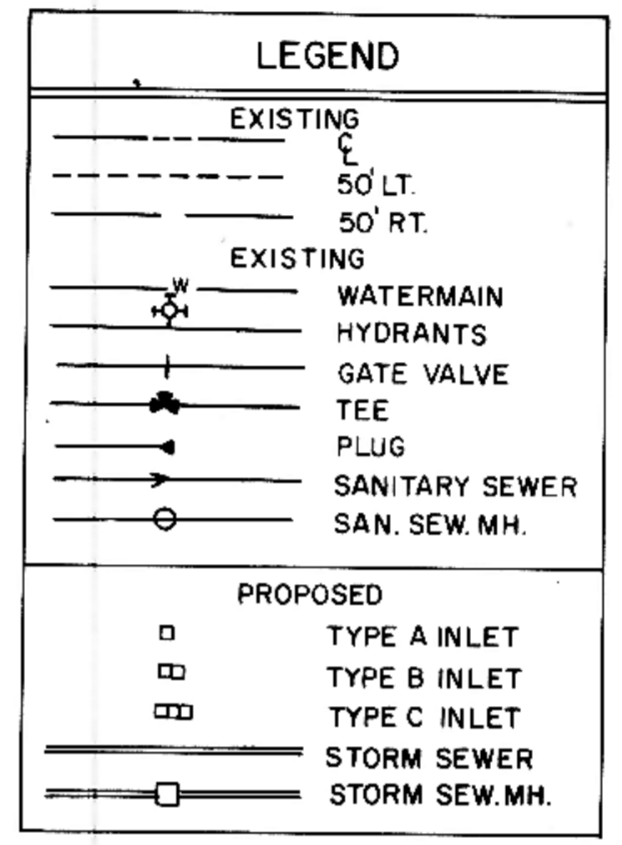
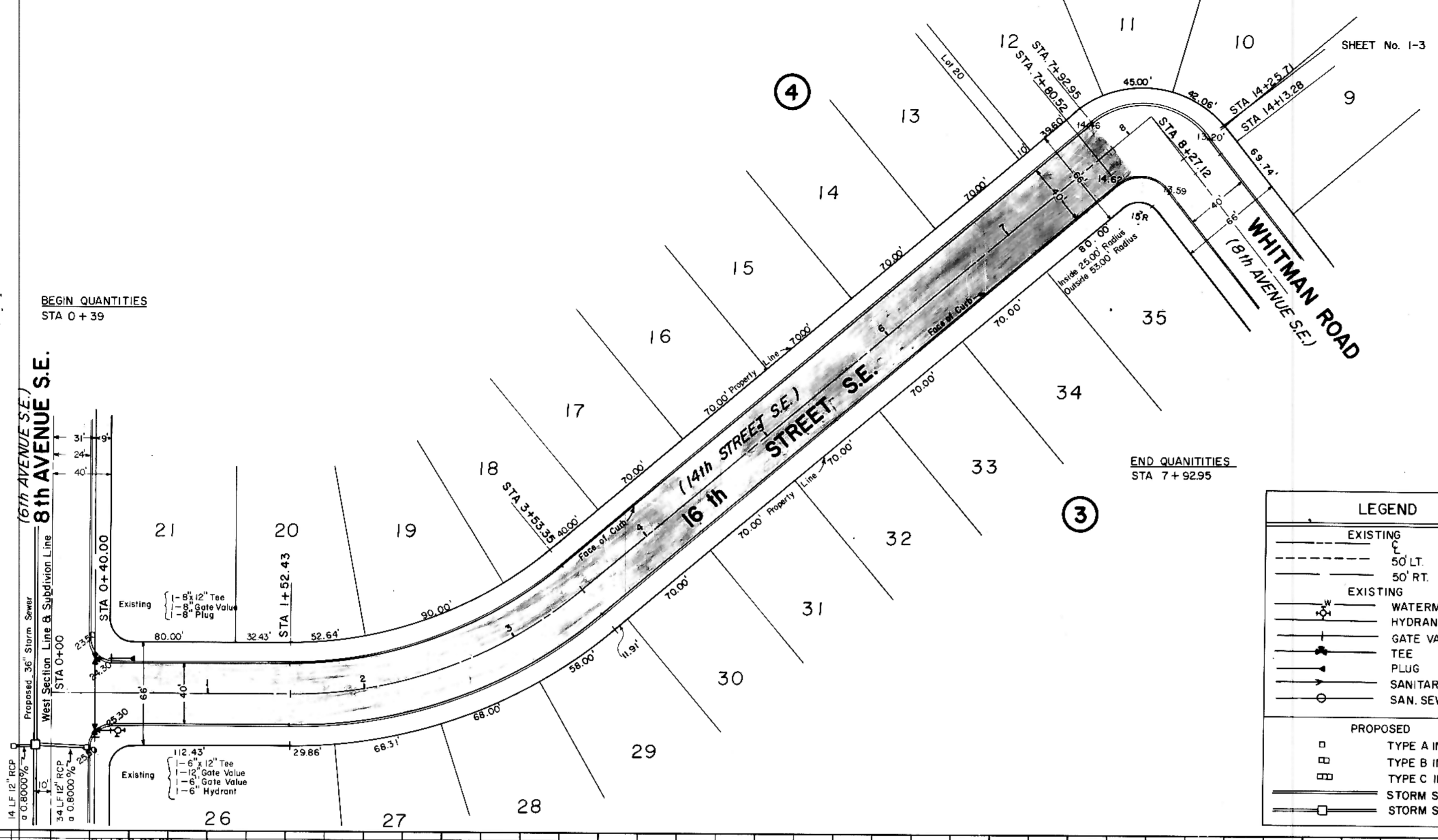


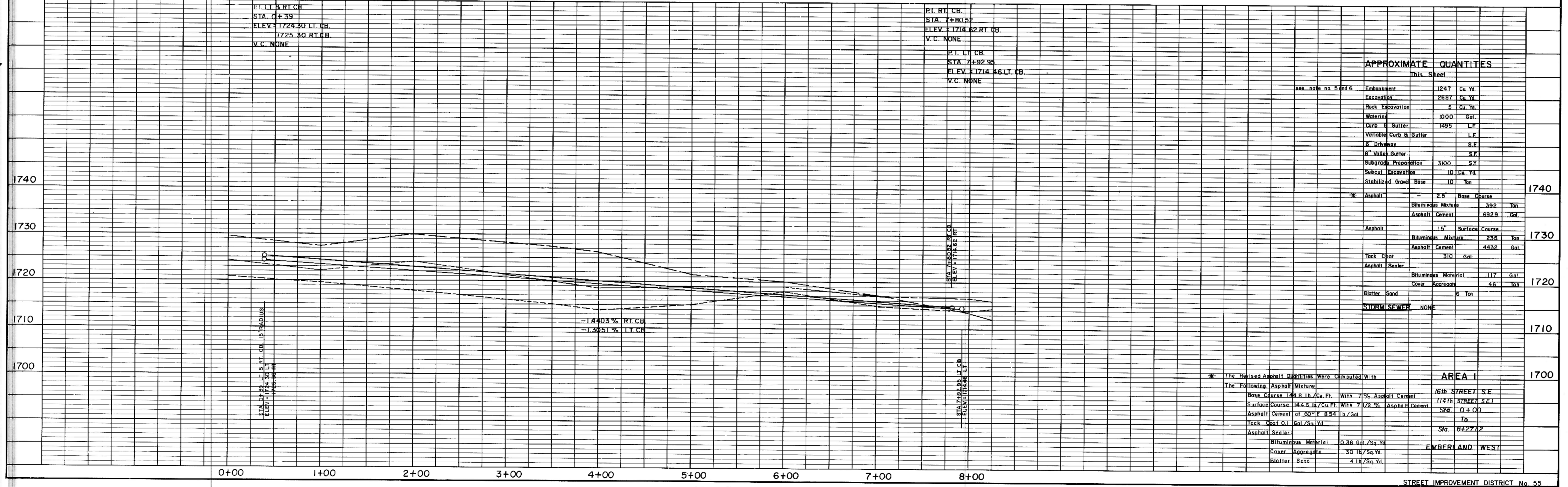
HORIZONTAL SCALE: 1" = 50'
 VERTICAL SCALE: 1" = 10'
 DATE: JULY 1977

PLAN
 SURVEYED BY
 PLOTTED BY
 ALIGNED CHECKED BY
 DATE OF PLAN CHECKED

PROFILE
 SURVEYED BY
 PLOTTED BY
 ALIGNED CHECKED BY
 DATE OF PROFILE CHECKED



- NOTES:
- Proposed Sewer and Water Improvements on 16th Street SE are shown on plans for "Consolidated Sewer and Water Improvement District No. 25." Said Sewer and Water Improvements shall be installed prior to any street improvements and contractor shall be responsible for the preservation of said Sewer and Water Improvements during construction.
 - Sewer and Water Improvements as shown on plans are existing as per date of street improvement plans. Existing Sewer and Water as per "Consolidated Water and Sewer Improvement District No. 23."
 - Proposed grades are to top of curb unless otherwise stated.
 - All curb and gutter radii are 15 feet at face of curb unless otherwise stated.
 - Embankment quantities shown include an assumed 30% shrinkage factor.
 - Any fill needed in excess of that available in Emberland West Addition shall be obtained from excess excavation obtained from Rippel's Second Subdivision. The additional haul distance shall be incidental to the cost of excavation in Rippel's Second Subdivision.



APPROXIMATE QUANTITIES		This Sheet	
Embankment	1247	Cu. Yd.	
Excavation	2687	Cu. Yd.	
Rock Excavation	5	Cu. Yd.	
Watering	1000	Gal.	
Curb & Gutter	1495	L.F.	
Variable Curb & Gutter		L.F.	
8" Driveway		S.F.	
8" Valley Gutter		S.F.	
Subgrade Preparation	3100	S.Y.	
Subcut Excavation	10	Cu. Yd.	
Stabilized Gravel Base	10	Ton	
Asphalt	2.5	Base Course	1740
Bituminous Mixture	352	Yon	
Asphalt Cement	692.9	Gal.	
Asphalt	1.5	Surface Course	1730
Bituminous Mixture	235	Yon	
Asphalt Cement	443.2	Gal.	
Tack Coat	310	Gal.	
Asphalt Sealer			
Bituminous Material	1117	Gal.	
Cover Aggregate	46	Yon	1720
Blotter Sand	6	Ton	
STORM SEWER	NONE		
* The Revised Asphalt Quantities Were Computed With The Following Asphalt Mixtures:		AREA I	
Base Course	144.8 lb./Cu. Ft. With 7% Asphalt Cement	16th STREET S.E.	
Surface Course	144.6 lb./Cu. Ft. With 7.12% Asphalt Cement	114th STREET S.E.	
Asphalt Cement at 60°F	8.54 lb./Gal.	Sta. 0+00	
Tack Coat	0.1 Gal./Sq. Yd.	Sta. 8+27.2	
Asphalt Sealer		EMBERLAND WEST	
Bituminous Material	0.36 Gal./Sq. Yd.		
Cover Aggregate	30 lb./Sq. Yd.		
Blotter Sand	4 lb./Sq. Yd.		

KE PLATE 1, PLAN-PROFILE
 KEUFFEL & ESSER CO.
 487024 MADE IN U.S.A.

STREET IMPROVEMENT DISTRICT No. 55
 MANDAN, NORTH DAKOTA
 SHEET No. 1-2
 DATE REVISED: February, 1978