

DEVELOPER'S WEST ACRES WATER & SEWER DISTRICT NO. 24 PROJECT LAYOUT

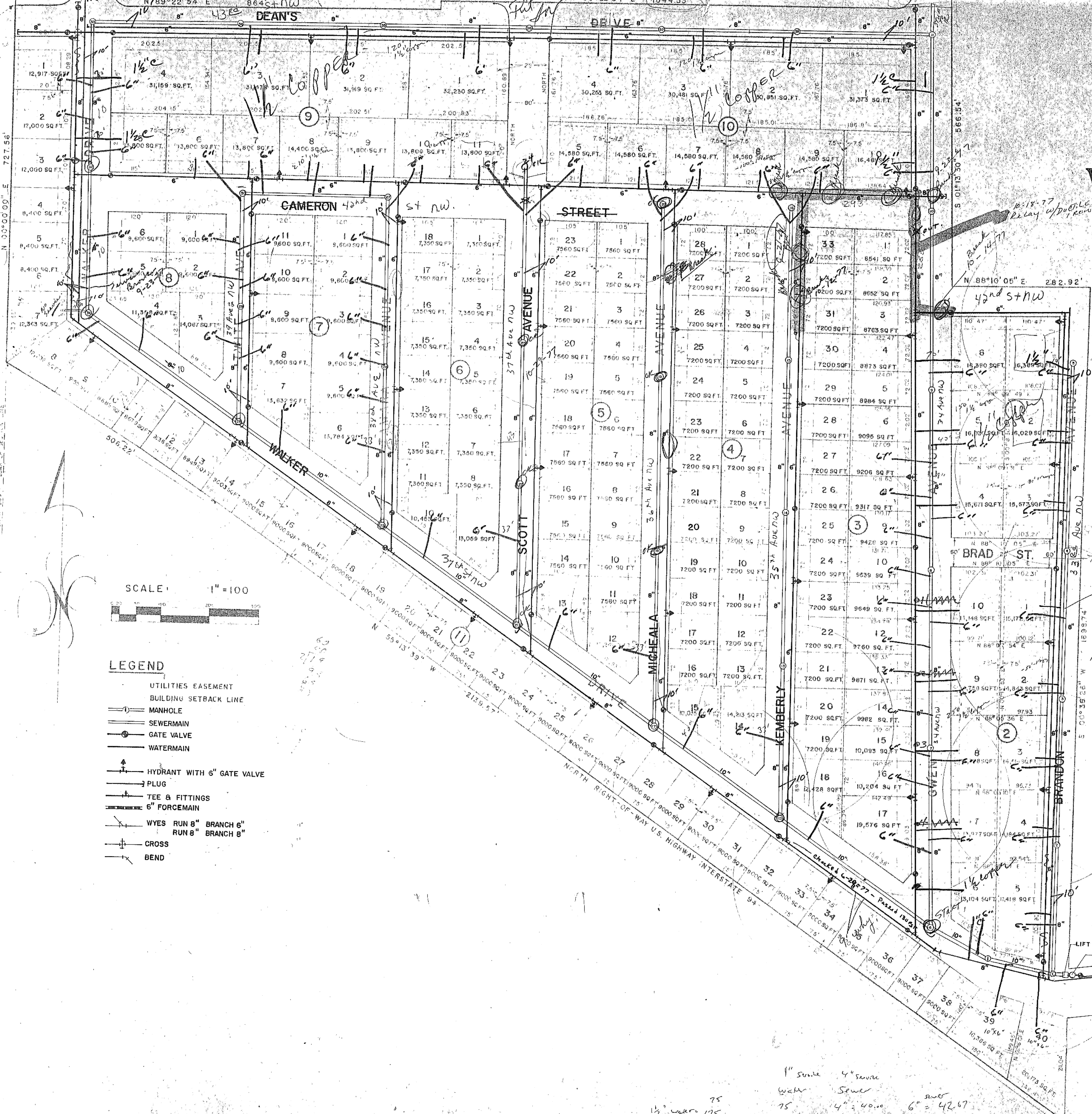
- 37 - 1/2" copper service.
- 45 - 1" corp / ~~1" corp~~ ABANDONED.
- 3 - 1" copper service ABANDONED.

TOTAL 4/6
 6" 78 - 6" service Pipe } 17 - 10" x 6" WYES.
 4" } 61 - 8" x 6" WYES.
 } 33 - 10" x 4" WYES.
 } 85 - 8" x 4" WYES.
 } 196 UNITS.

SCALE: 1" = 100'

LEGEND

- UTILITIES EASEMENT
- BUILDING SETBACK LINE
- MANHOLE
- SEWERMAIN
- GATE VALVE
- WATERMAIN
- HYDRANT WITH 6" GATE VALVE
- PLUG
- TEE & FITTINGS
- 6" FORCEMAIN
- WYES RUN 8" BRANCH 6"
RUN 8" BRANCH 8"
- CROSS
- BEND



1" service 4" service
 water sewer
 75 4" = 40.00 6" = 42.67
 1/2" water 175 4.00/ft 4.00/ft 4.25/ft

Toman Engineering Company
 Civil & Environmental Consultants
 P.O. Box 708 P.O. Box 852
 Mandan, ND - Boissvain, Man RKO OEP