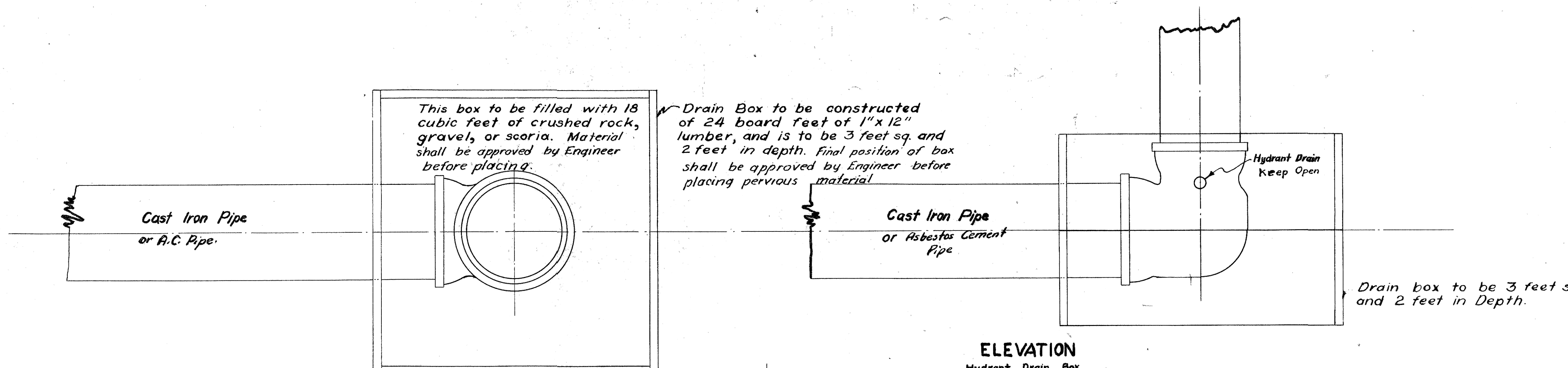


**NOTES:**

Installation of all hydrants to be in accordance with plans and specifications, and to be set at the discretion of the job engineer.

All watermain to be maintained with eight (8) feet of cover at all times.

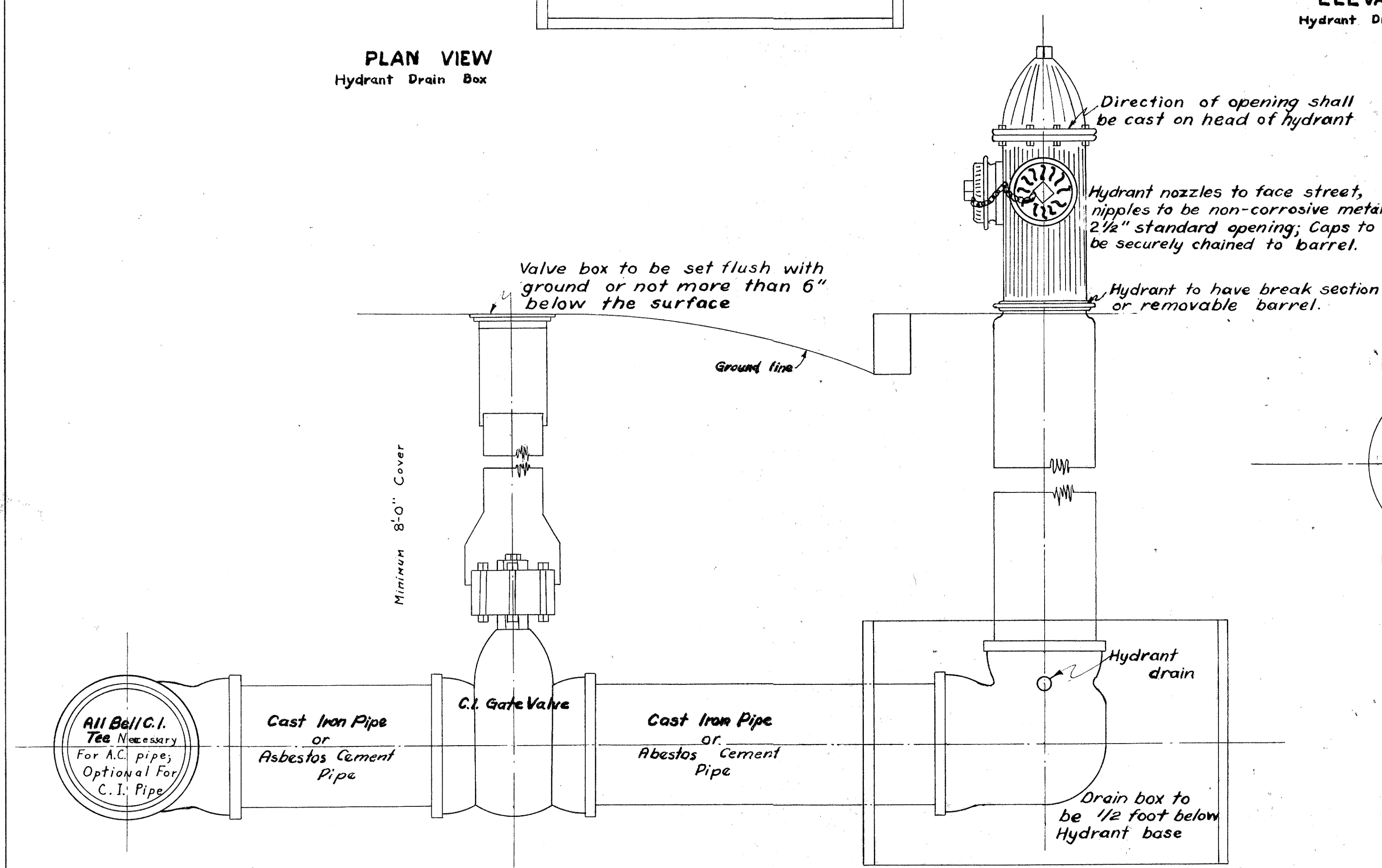


**ELEVATION**  
Hydrant Drain Box

**PLAN VIEW**  
Hydrant Drain Box

This box to be filled with 18 cubic feet of crushed rock, gravel, or scoria. Material shall be approved by Engineer before placing.

Drain Box to be constructed of 24 board feet of 1"x12" lumber, and is to be 3 feet sq. and 2 feet in depth. Final position of box shall be approved by Engineer before placing pervious material.



**ELEVATION**  
Hydrant Detail

Direction of opening shall be cast on head of hydrant

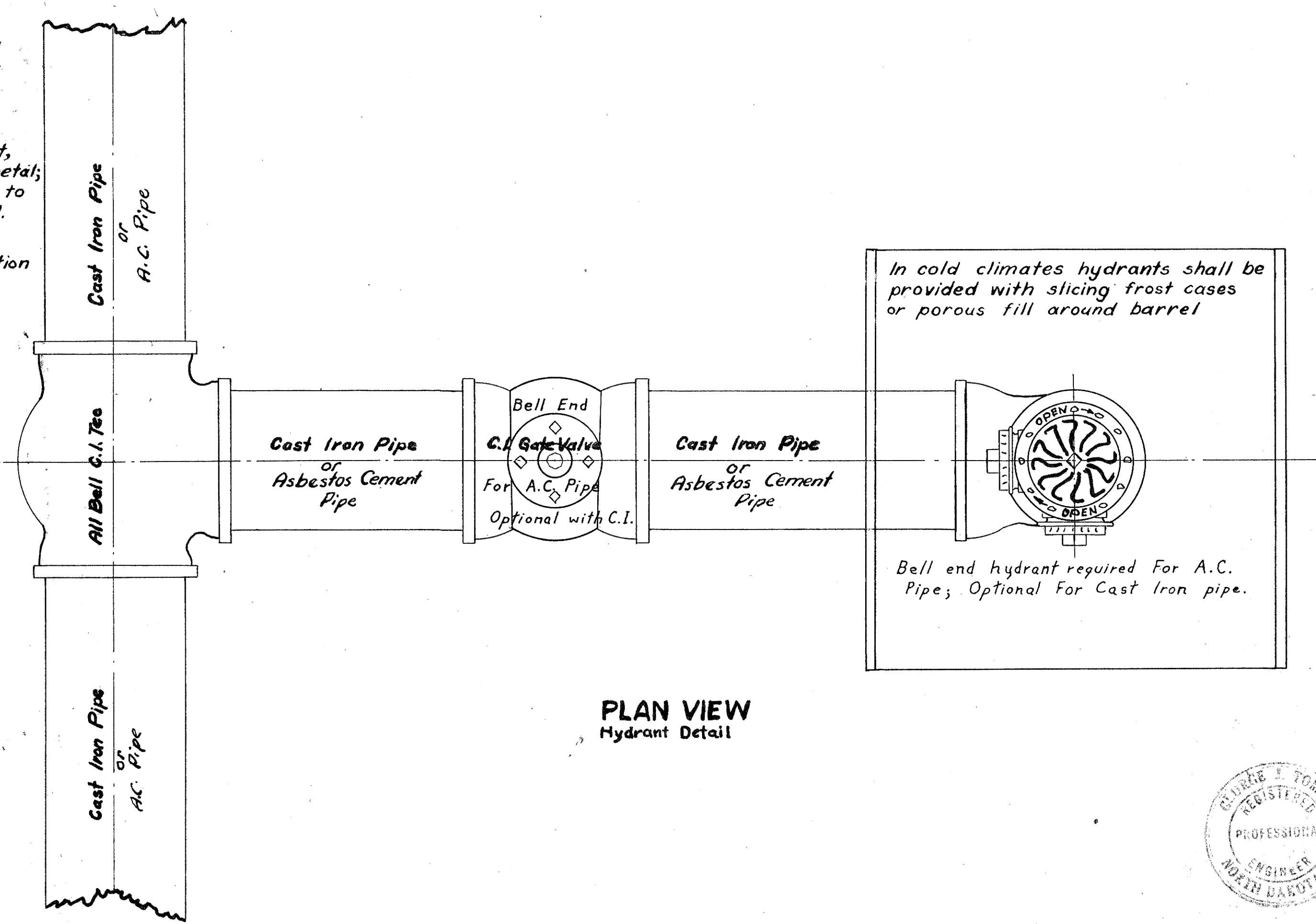
Hydrant nozzles to face street, nipples to be non-corrosive metal; 2 1/2" standard opening; Caps to be securely chained to barrel.

Hydrant to have break section or removable barrel.

Valve box to be set flush with ground or not more than 6" below the surface

Minimum 8'-0" Cover

Drain box to be 1/2 foot below Hydrant base



**PLAN VIEW**  
Hydrant Detail

In cold climates hydrants shall be provided with slicing frost cases or porous fill around barrel

Bell end hydrant required For A.C. Pipe; Optional For Cast Iron pipe.



WATER IMPROVEMENT DISTRICT NO. 2  
MANDAN, NORTH DAKOTA  
**HYDRANT & HYDRANT DRAIN BOX  
DETAILS**

Drawn by [Signature]  
Revised 12/1/52 [Signature]  
Revised 3/17/55 [Signature]

Checked by: [Signature]

SHEET NO.

George J. Toman  
RPE 185

Consulting Engineer  
Mandan, North Dakota.