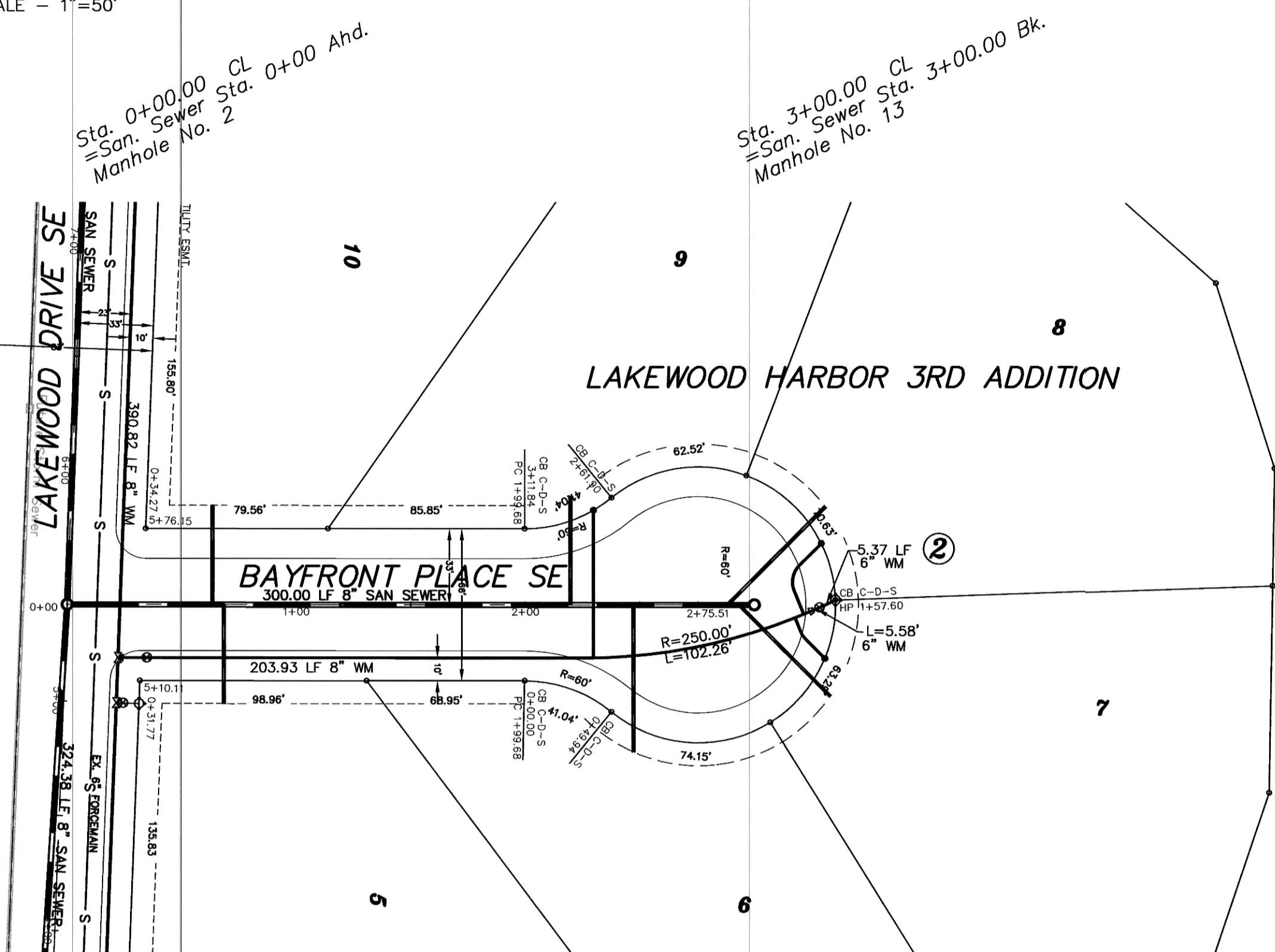


SCALE - 1"=50'



Sta. 0+22.15  
8" x 8" Tee

Sta. 0+34.77  
6" Gate Valve & Box

Begin Watermain Quantities  
Sta. 0+22.15

Begin San. Sewer Quantities  
Sta. 0+00.00

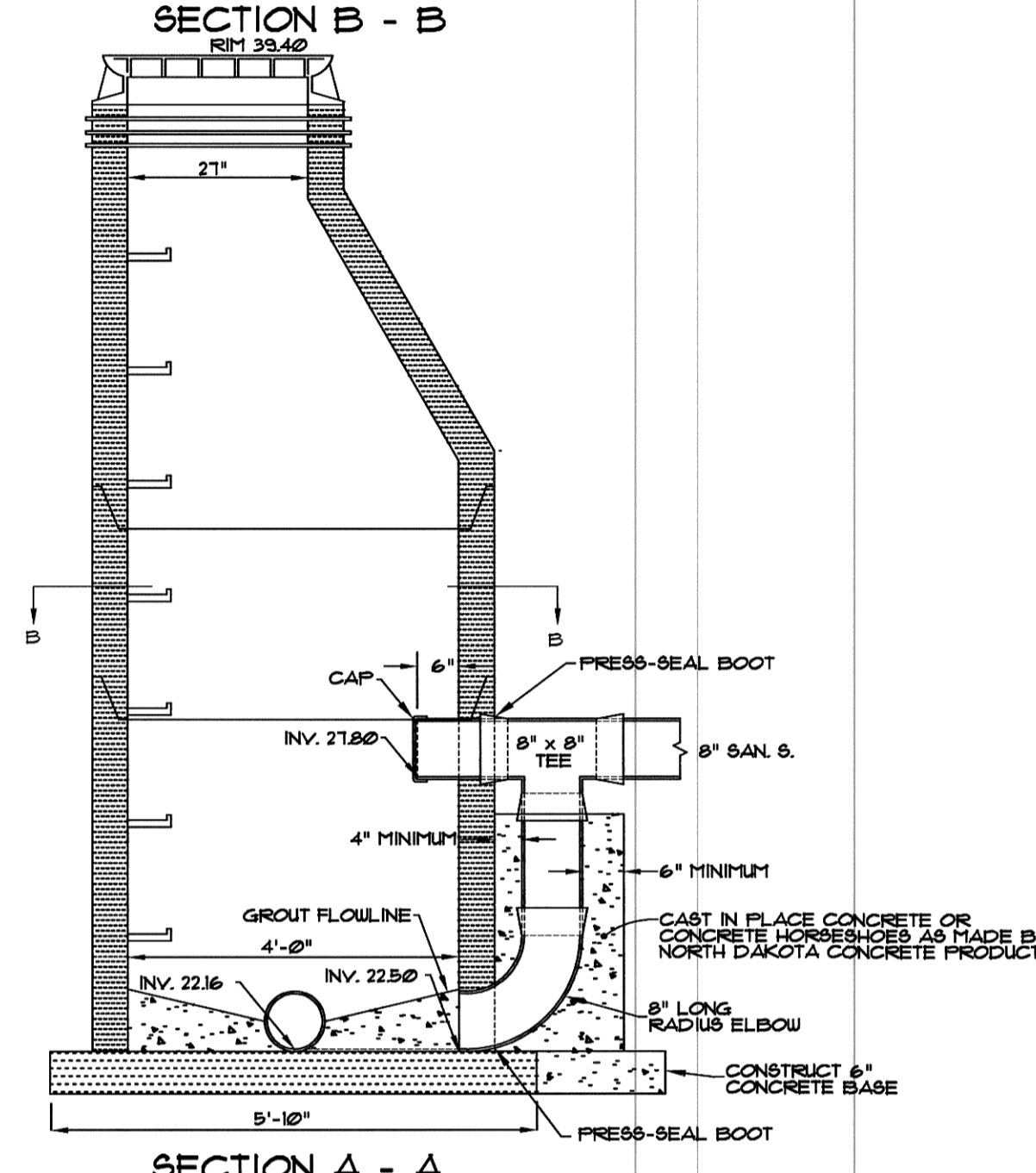
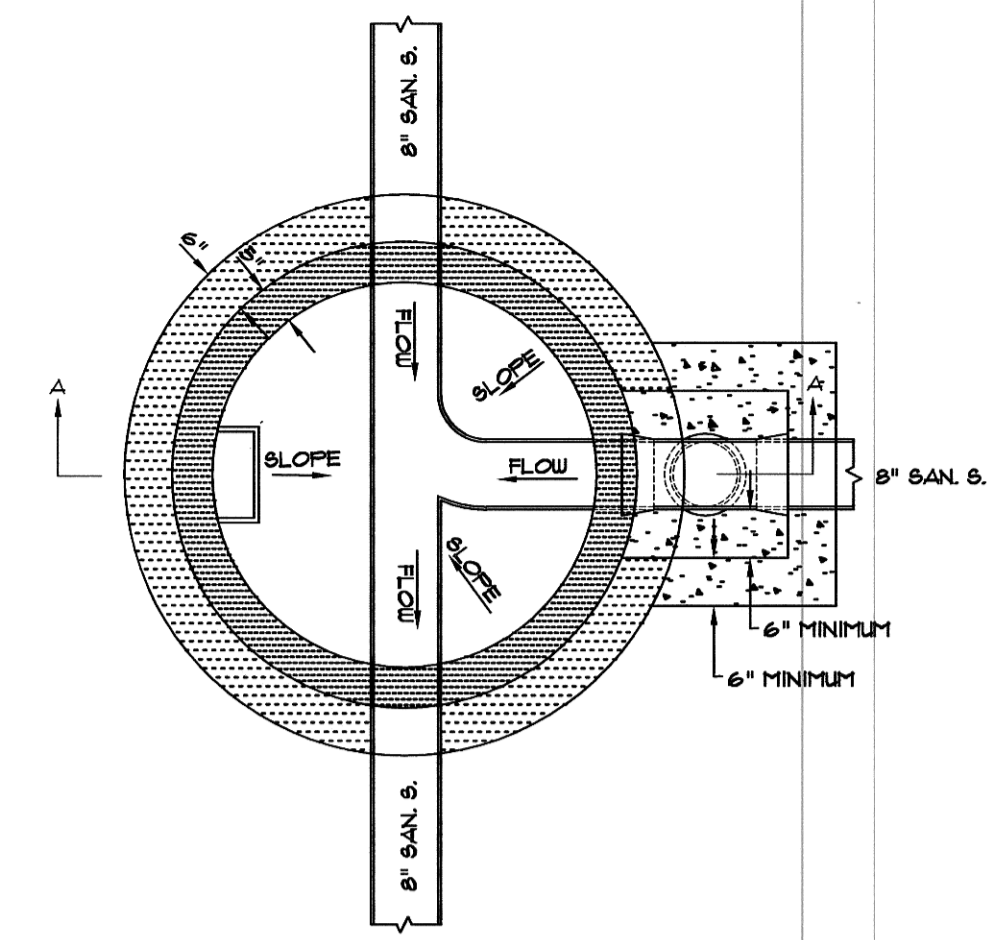
Sta. 3+35.47 2.14' Lt.  
6" Hydrant from Salvage

Sta. 3+28.50 1.05' Rt.  
6" Gate Valve & Box

Sta. 3+25.50 2.38' Rt.  
8" x 6" Reducer from Salvage

End Watermain Quantities  
Sta. 3+35.47

End San. Sewer Quantities  
Sta. 3+00.00

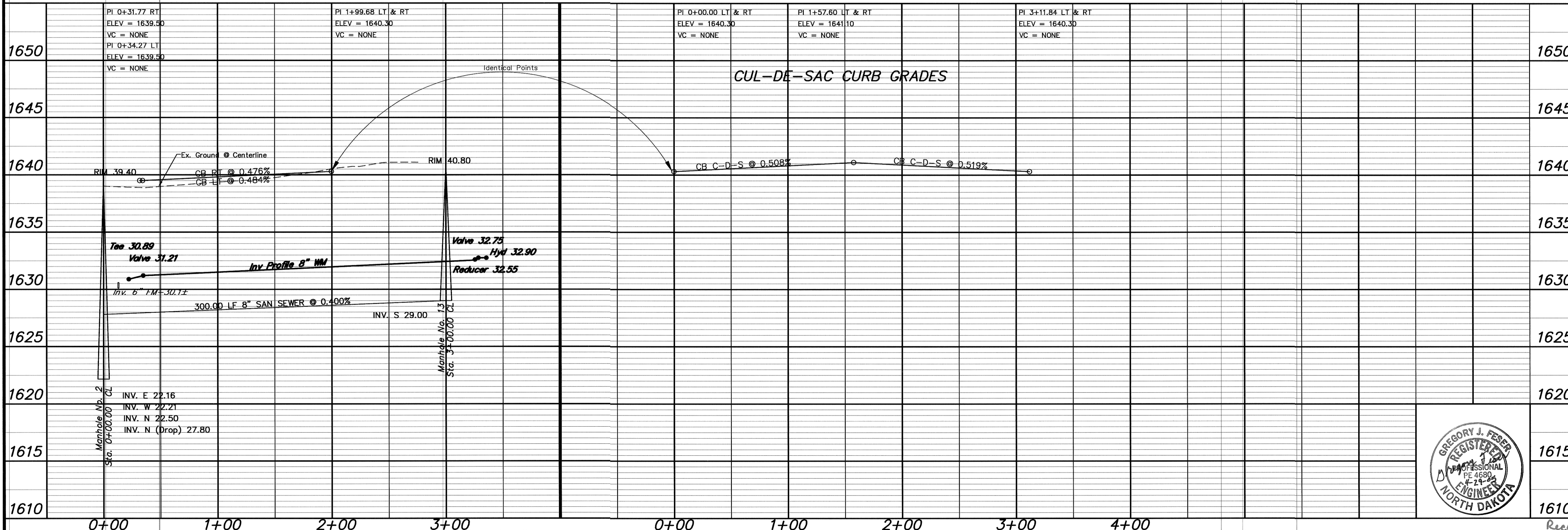


Manhole Number	13
Casting Elev.	40.80
Top P.C. Section	39.78
Invert Elev. (A)	29.00
Length P.C. Section	10.76

APPROXIMATE WYE LOCATIONS			
STATION	DIRECTION	LOT	BLOCK
FROM MANHOLE 2 TO MANHOLE NO. 13			
0+63	W	10	2
0+68	E	5	9
2+20	E	6	2
2+47	E	6	2
2+58	NW	6	2
2+93	NE	7	2

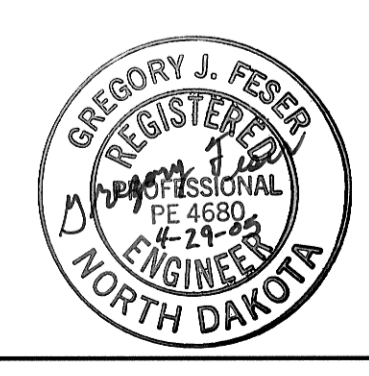
Lot	Block	4" Sewer Service	4" 22 1/2" Bend	4" 45" Bend	8" x 4" Wye Branch	1" Water Service Invert	1" Copper Water Service Invert	1" Water Service Pipe Connection	1" Ball Valve Curb Stop	Water Service Invert At The Curb Stop
10	2	43.0	1	1	28.80					
5	2	43.0	1	1	28.81					
9	2	47.2	1	1	29.46	64.0	1	1	33.00	
6	2	64.0	1	1	29.73					
8	2	60.4	1	1	29.86	36.5	1	1	33.40	
7	2	56.3	1	1	29.84	22.3	1	1	33.40	
TOTAL		373.9	4	6	122.8	3	3			

NOTE:  
ALL WATER MAIN IS 24" O.D. RIGHT OF CENTERLINE UNLESS OTHERWISE STATED



APPROXIMATE QUANTITIES	
San. Sewer Items	Quantity
8" Sanitary Sewer	300 LF
8" x 4" Wye Branch	6 EA
Concrete Manhole	1 EA
4" Sewer Service Pipe	314 LF
4" 45" Bend	4 EA
Watermain Items	
Quantity	
8" PVC Watermain	306 LF
6" PVC Watermain	11 LF
6" Hydrant From Salvage	1 EA
6" Gate Valve & Box	2 EA
Ductile Iron Fittings	(incidental)
1" Water Copper Serv. Pipe	123 LF
1" Water Serv. Connection	3 EA
1" Ball Valve Curb Stop	3 EA
And 1 1/2" Box	

**SWENSON, HAGEN & COMPANY P.C.**  
 909 Basin Avenue P.O. Box 1135  
 Bismarck, North Dakota 58504  
 sheng@swensonhagen.com  
 Phone (701) 223-2600  
 Fax (701) 223-2606



**BAYFRONT PLACE SE**  
 FROM THE INTERSECTION OF LAKEWOOD DRIVE SE  
 NORTH TO THE CUL-DE-SAC

1615 WATER AND SEWER IMPROVEMENT PROJECT 2005-17  
 SHEET NO. 6 OF 8

1610 MANDAN, ND APRIL 22, 2005

Record Drawing COPYRIGHT 2005 SWENSON, HAGEN & CO.