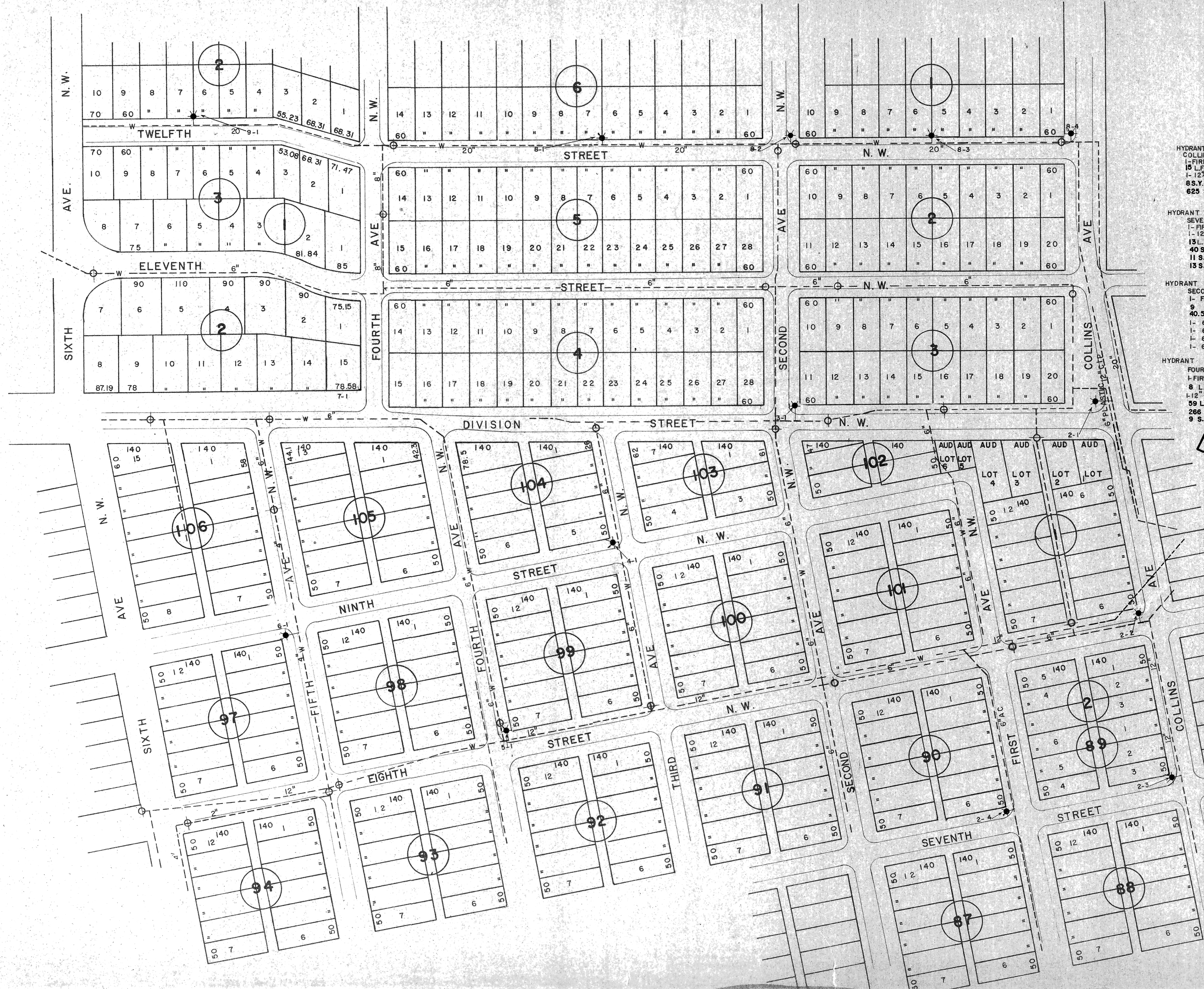


SCALE 1" = 100'



- HYDRANT 2-1 AT DIVISION ST. AND COLLINS AVE. INSTALLED
1-FIRE HYDRANT
15' L.F. OF 6" HYDRANT LEAD
1-12" X 6" TAPPING SLEEVE & VALVE
8 S.Y. ASPHALT
625 S.Y. OF SEED
- HYDRANT 2-2 AT COLLINS AVE. AND EIGHTH ST. N.W. INSTALLED
1-FIRE HYDRANT
13' L.F. OF 6" HYDRANT LEAD
1-6" X 6" TEE
1-6" CONSTRUCTION SLEEVE
1-22" BEND
140 S.F. SIDEWALK, 9 S.Y. ASPHALT
73 S.Y. SOD
- HYDRANT 2-3 AT COLLINS AVE. AND SEVENTH ST. N.W. INSTALLED
1-FIRE HYDRANT
1-12" X 6" TAPPING SLEEVE & VALVE
13' L.F. OF 6" HYDRANT LEAD
40 S.F. SIDEWALK
11 S.Y. ASPHALT
13 S.Y. SOD
- HYDRANT 2-4 AT FIRST AVE. N.W. AND SEVENTH ST. N.W. INSTALLED
1-FIRE HYDRANT
17' L.F. OF 6" HYDRANT LEAD
5 S.Y. SOD
1-6" X 6" TEE
1-6" STUB
1-6" CONSTRUCTION SLEEVE
1-6" GATE VALVE
75 S.F. SIDEWALK, 75 L.F. C&G, 99 S.Y. ASPHALT
- HYDRANT 3-1 AT DIVISION ST. N.W. AND SECOND AVE. N.W. INSTALLED
1-FIRE HYDRANT
9' L.F. OF 6" HYDRANT LEAD
40.5 S.F. SIDEWALK, 6 S.Y. SOD
1-6" X 6" TEE
1-6" STUB
1-6" CONSTRUCTION SLEEVE
1-6" GATE VALVE
- HYDRANT 3-2 AT DIVISION ST. N.W. AND THIRD AVE. N.W. INSTALLED
1-FIRE HYDRANT
8' L.F. OF 6" HYDRANT LEAD
1-18" HYDRANT EXTENSION
1-6" X 6" TEE, 1-VALVE BOX EXTENS
1-6" STUB, 25 L.F. CURB & GUTTER
1-6" CONSTRUCTION SLEEVE
1-6" GATE VALVE, 9 S.Y. SOD
90 S.F. SIDEWALK
- HYDRANT 5-1 AT EIGHTH ST. N.W. AND FOURTH AVE. N.W. INSTALLED
1-FIRE HYDRANT
9' L.F. OF 6" HYDRANT LEAD
1-12" X 6" TAPPING SLEEVE & VALVE
59 L.F. CURB & GUTTER
266 S.F. SIDEWALK
9 S.Y. SOD
- HYDRANT 6-1 AT NINTH ST. AND FIFTH AVE. N.W. INSTALLED
1-FIRE HYDRANT
18' L.F. OF 6" HYDRANT LEAD
8 S.Y. ASPHALT, 52 S.F. SIDEWALK
1-6" X 6" TEE
1-4" STUB
1-4" CONSTRUCTION SLEEVE
1-6" GATE VALVE
9 S.Y. SOD
- HYDRANT 7-1 AT DIVISION ST. N.W. AND FOURTH AVE. N.W. INSTALLED
1-FIRE HYDRANT
30' L.F. OF 6" HYDRANT LEAD
1-6" X 6" TEE
1-6" STUB
1-6" CONSTRUCTION SLEEVE
1-6" GATE VALVE
- HYDRANT 8-1 AT TWELFTH ST. N.W. AND SECOND AVE. N.W. INSTALLED
1-FIRE HYDRANT
9' L.F. OF 6" HYDRANT LEAD
1-20" X 6" TAPPING SLEEVE & VALVE
8 S.Y. SOD
45 S.F. SIDEWALK
- HYDRANT 8-2 AT TWELFTH ST. N.W. AND SECOND AVE. N.W. INSTALLED
1-FIRE HYDRANT
9' L.F. OF 6" HYDRANT LEAD
1-20" X 6" TAPPING SLEEVE & VALVE
8 S.Y. SOD
45 S.F. SIDEWALK
- HYDRANT 8-3 AT TWELFTH ST. N.W. AND SECOND AVE. N.W. INSTALLED
1-FIRE HYDRANT
7' L.F. OF 6" HYDRANT LEAD
1-36" HYD. EXT.
1-GATE VALVE BOX EXT.
45 S.F. SIDEWALK
- HYDRANT 8-4 AT TWELFTH ST. N.W. AND COLLINS AVE. INSTALLED
1-FIRE HYDRANT
8' L.F. OF 6" HYDRANT LEAD
1-20" X 6" TAPPING SLEEVE & VALVE
1-36" HYD. EXT.
1-GATE VALVE BOX EXT.
8 S.Y. ASPHALT
81.5 S.Y. SOD
31- S.Y. SEED
- HYDRANT 9-1 AT TWELFTH ST. N.W. AND COLLINS AVE. INSTALLED
1-FIRE HYDRANT
2' L.F. OF 6" HYDRANT LEAD
1-20" X 6" TAPPING SLEEVE & VALVE
1-36" HYD. EXT.
45 S.F. SIDEWALK

DELETED

AS BUILT



DATE	REV. BY	APPR. BY	DESCRIPTION
			CITY OF MANDAN, NORTH DAKOTA. ENGINEERING DEPARTMENT
HYDRANT AREA LOCATIONS 2 THROUGH 9			
CITY ENGINEER	THOMAS LITTLE	DRAWN BY	B.B.
APPROVED BY		CHECKED BY	S.D.
PROJECT NO.	79-6	DISTRICT NO.	6
		SCALE:	1" = 100'
		DATE:	MARCH 1979
		SHEET:	3 OF 4