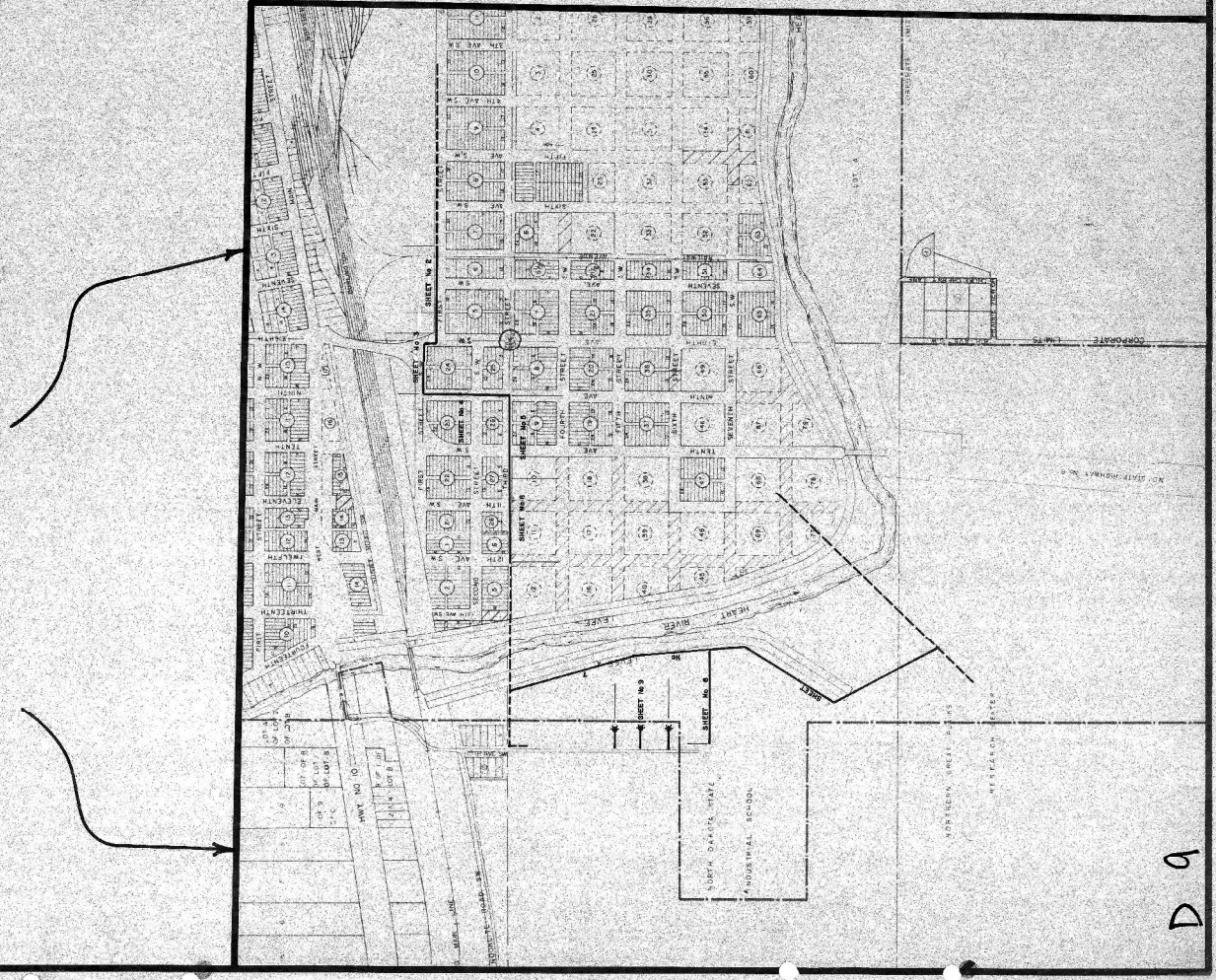
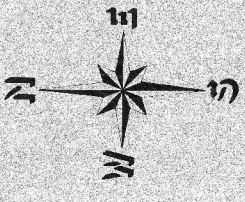
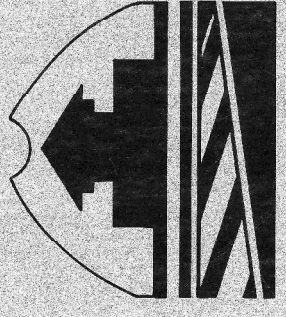


PROJECT LOCATION MAP



CITY OF MANDAN



ENGINEER'S CERTIFICATE

THOMAS LITTLE, A REGISTERED PROFESSIONAL ENGINEER,
HEREBY CERTIFIES THAT THE ATTACHED PLANS WERE PREPARED
UNDER MY SUPERVISION AND ARE COMPLETE AND CORRECT TO THE
BEST OF MY KNOWLEDGE AND BELIEF.

Thomas Little
THOMAS LITTLE, P.E.
CITY ENGINEER - MANDAN, N.D.

INDEX

- SHEET 1 COVER AND TITLE FROM RAILWAY AVE TO 400 WEST OF
- SHEET 2 400 WEST OF RAILWAY AVE TO 24th AVE S.W.
- SHEET 3 24th AVE S.W. TO 28th AVE S.W.
- SHEET 4 28th AVE S.W. TO 34th AVE S.W.
- SHEET 5 34th AVE S.W. TO 40th AVE S.W.
- SHEET 6 40th AVE S.W. TO 46th AVE S.W.
- SHEET 7 EXISTING S.L.S. W.M. TO 46th AVE S.W.
- SHEET 8 46th AVE S.W. TO 52nd AVE S.W.
- SHEET 9 HYDRANT CONNECTIONS AT S.L.S.
- SHEET 10 HYDRANT VALVE & A.A.M. DETAIL

WATER IMPROVEMENT DIST No. 9

7

AS BUILT

PROJECT 85-2

SHEET 1 OF 10

D 9
P 85-2