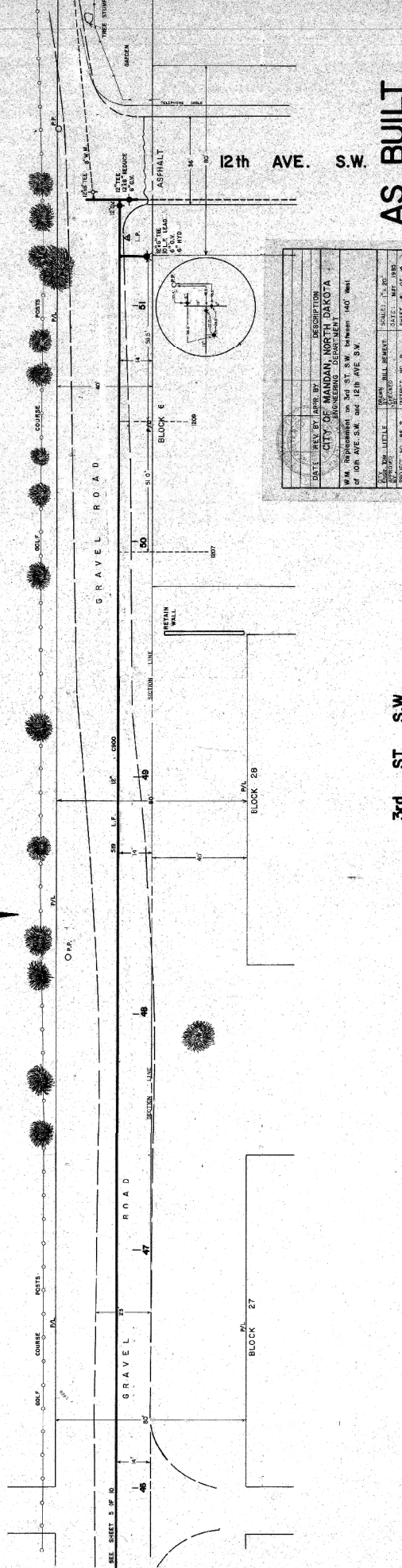


HORZ 1"=20'
VERT 1"=2'



DATE	REV BY	APP BY	DESCRIPTION
			CITY OF SIOUX FALLS, S.D.
			ENGINEERING DEPARTMENT
W.M. Replacement on 3rd St. S.W. between 140' West of 10th Ave. S.W. and 12th Ave. S.W.			
SCALE	1"=20'	DATE	NOV. 1988
PROJECT NO.	94-2	DISTRICT	NO. 9
PROJECT	SIOUX FALLS, S.D.		

AS BUILT

3rd ST. S.W.

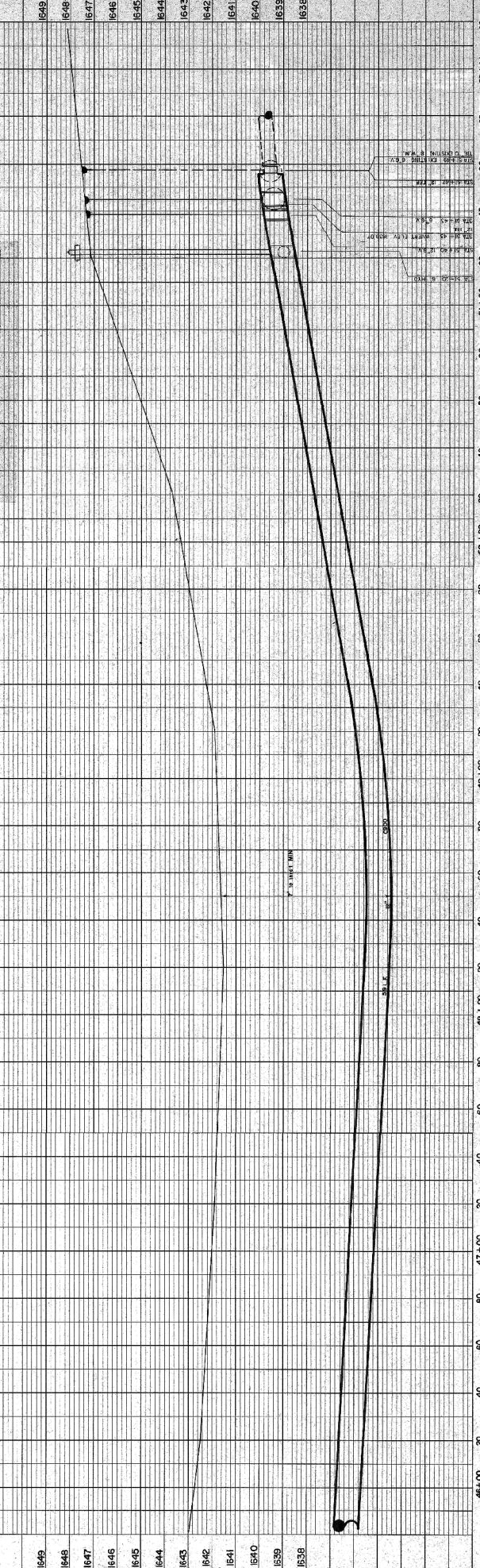


PLATE PROFILE
487203

PLAN

DATE	REV BY	APP BY	DESCRIPTION

PROFILE

DATE	REV BY	APP BY	DESCRIPTION