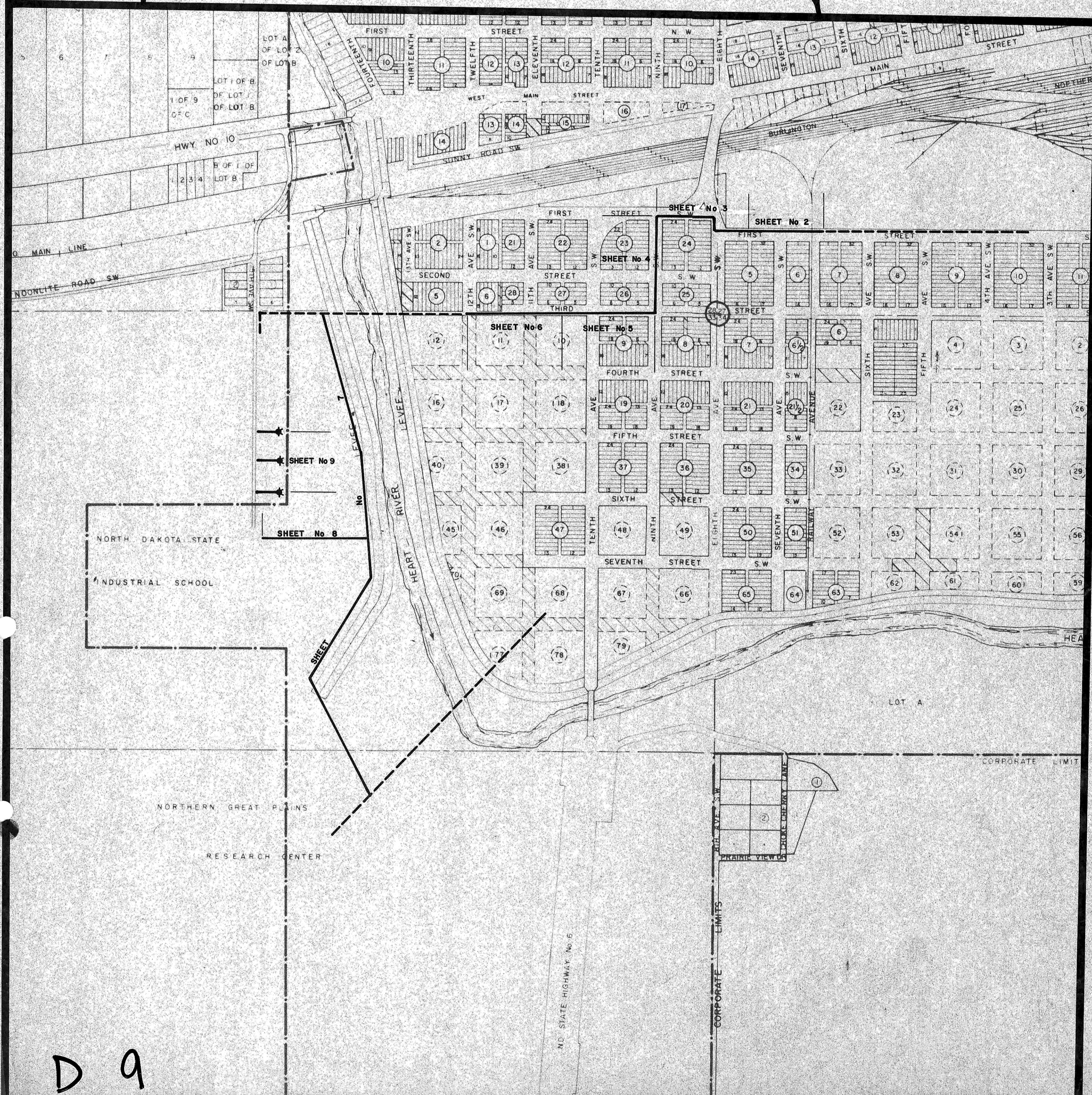
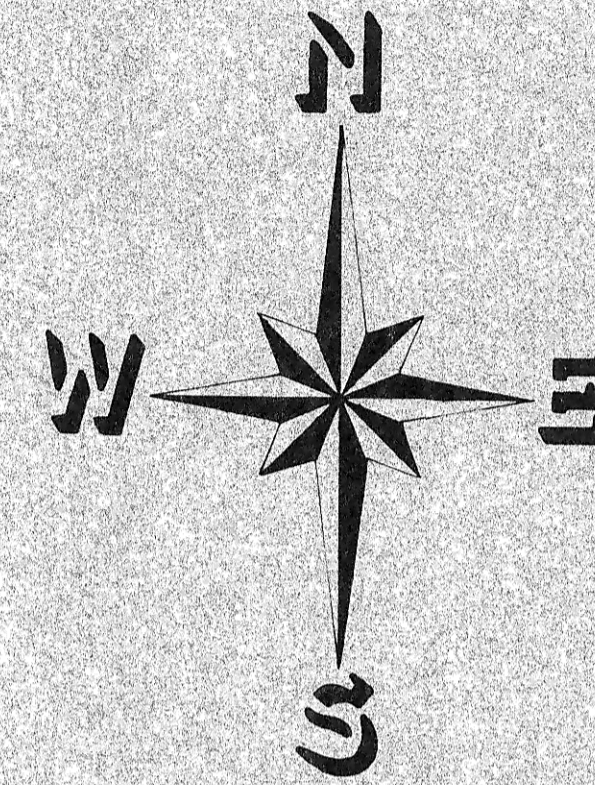
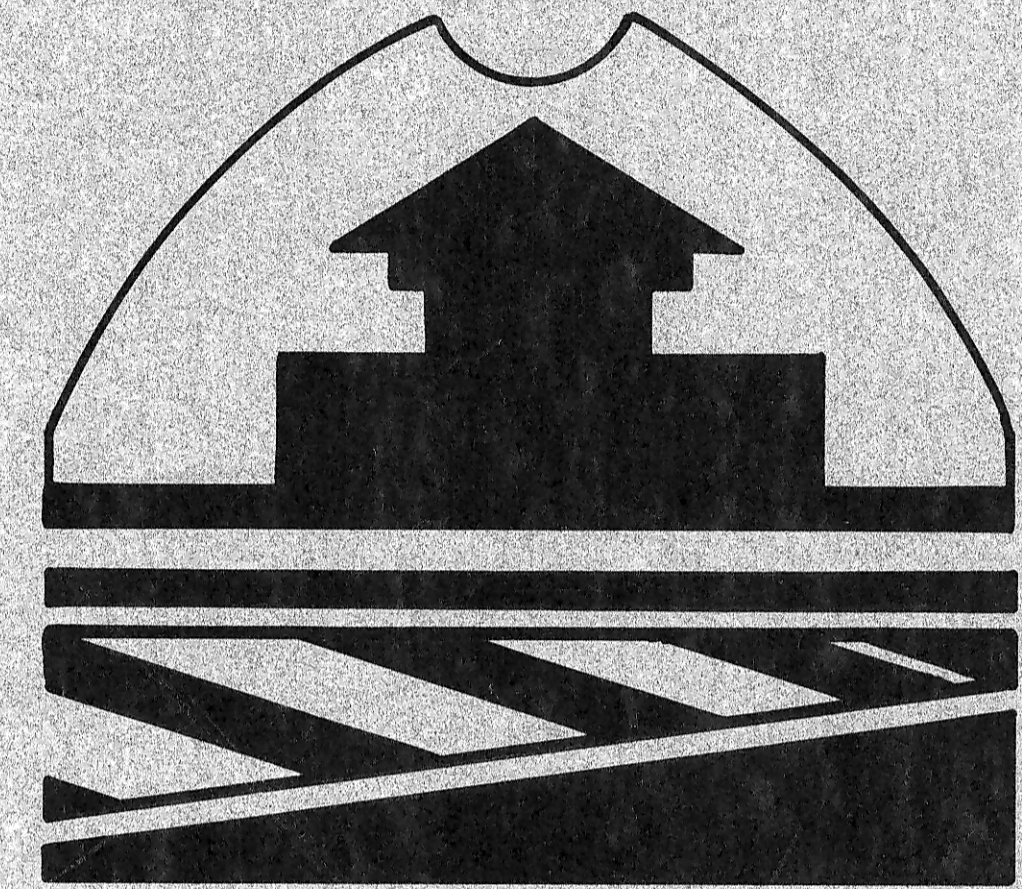


PROJECT LOCATION MAP

CITY OF MANDAN



ENGINEER'S CERTIFICATE

I, THOMAS R. LITTLE, A REGISTERED PROFESSIONAL ENGINEER, HEREBY CERTIFY THAT THE ATTACHED PLANS WERE PREPARED UNDER MY SUPERVISION AND ARE COMPLETE AND CORRECT TO THE BEST OF MY KNOWLEDGE AND BELIEF.

Thomas R. Little
THOMAS R. LITTLE, P.E.L.S.
CITY ENGINEER - MANDAN, N.D.

INDEX	
SHEET 1	COVER SHEET
SHEET 2	1st ST. S.W. FROM RAILWAY AVE TO 140' WEST OF 7th AVE. S.W.
SHEET 3	8th AVE. S.W. TO 9th AVE. S.W.
SHEET 4	1st ST. S.W. TO 3rd ST. S.W.
SHEET 5	9th AVE. S.W. TO 10th AVE. S.W.
SHEET 6	10th AVE. S.W. TO 12th AVE. S.W.
SHEET 7	EXISTING S.I.S. W.M. TO N.G.P.R.C.
SHEET 8	FROM LEVEE TO S.I.S.
SHEET 9	HYDRANT CONNECTIONS AT S.I.S.
SHEET 10	METER VAULT & A.R.V. DETAIL

WATER IMPROVEMENT DIST No. 9

7

AS BUILT

PROJECT 85-2

D 9
P 85-2