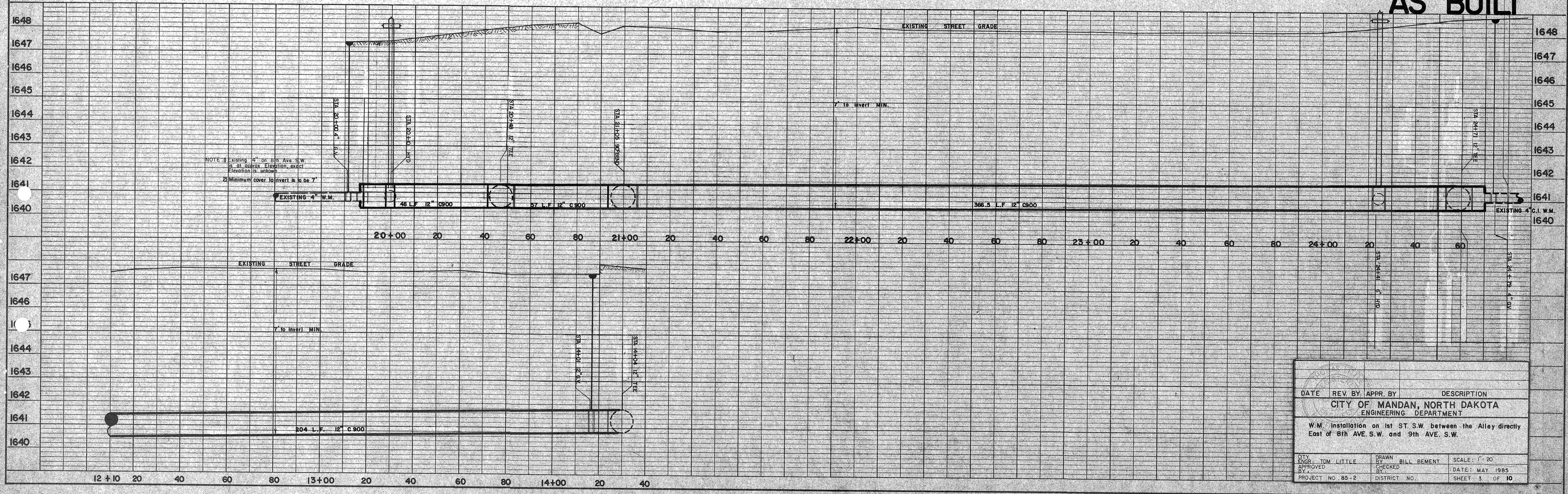


AS BUILT



NOTE: 1) Existing 4" dia 8th Ave S.W. at all crosses. Elevation exact. Elevation is unknown.
2) Minimum cover to invert is to be 7'

DATE	REV. BY	APPR. BY	DESCRIPTION
			CITY OF MANDAN, NORTH DAKOTA ENGINEERING DEPARTMENT
W.M. Installation on 1st ST S.W. between the Alley directly East of 8th AVE S.W. and 9th AVE S.W.			
CITY ENGR. TOM LITTLE	DRAWN BY BILL BEMENT	SCALE: 1" = 20'	
APPROVED BY [Signature]	CHECKED BY [Signature]	DATE: MAY 1985	
PROJECT NO. 85-2	DISTRICT NO.	SHEET 3 OF 10	

K&E
PLATE & PLAN PROFILE
19 2007 MADE IN U.S.A.
K&E ENGINEERING & DESIGN CO.

1" = 20'
1" = 2'
M.D.U. VALVE BUILD.
B.N.R.R.
TO BRIDGE
RETAINING WALL
SEE SHEET 4 OF 10
M&M

ENGINEER: [Signature]
CHECKED: [Signature]
PROJECT NO. 85-2
SHEET 3 OF 10
M&M