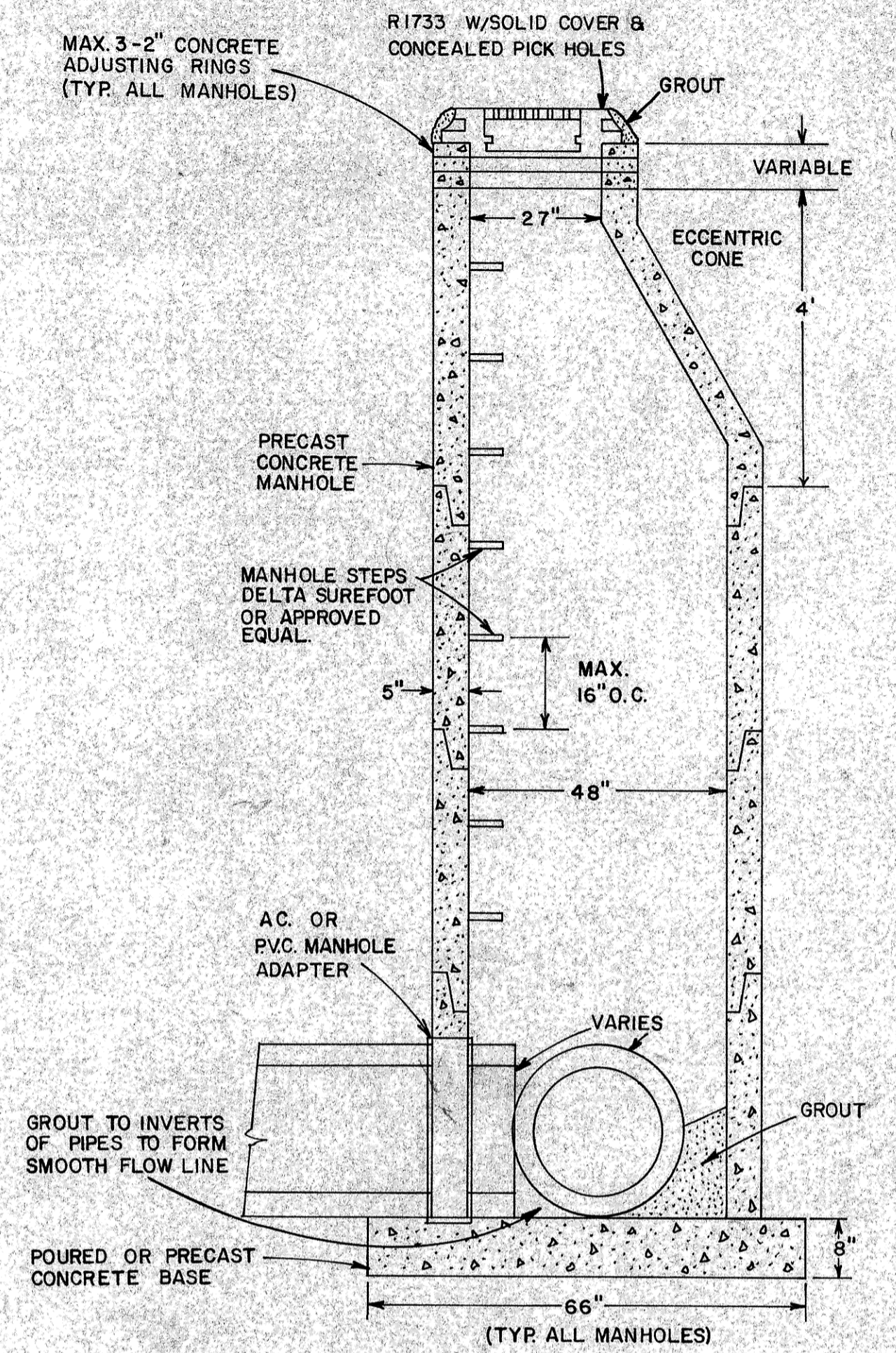
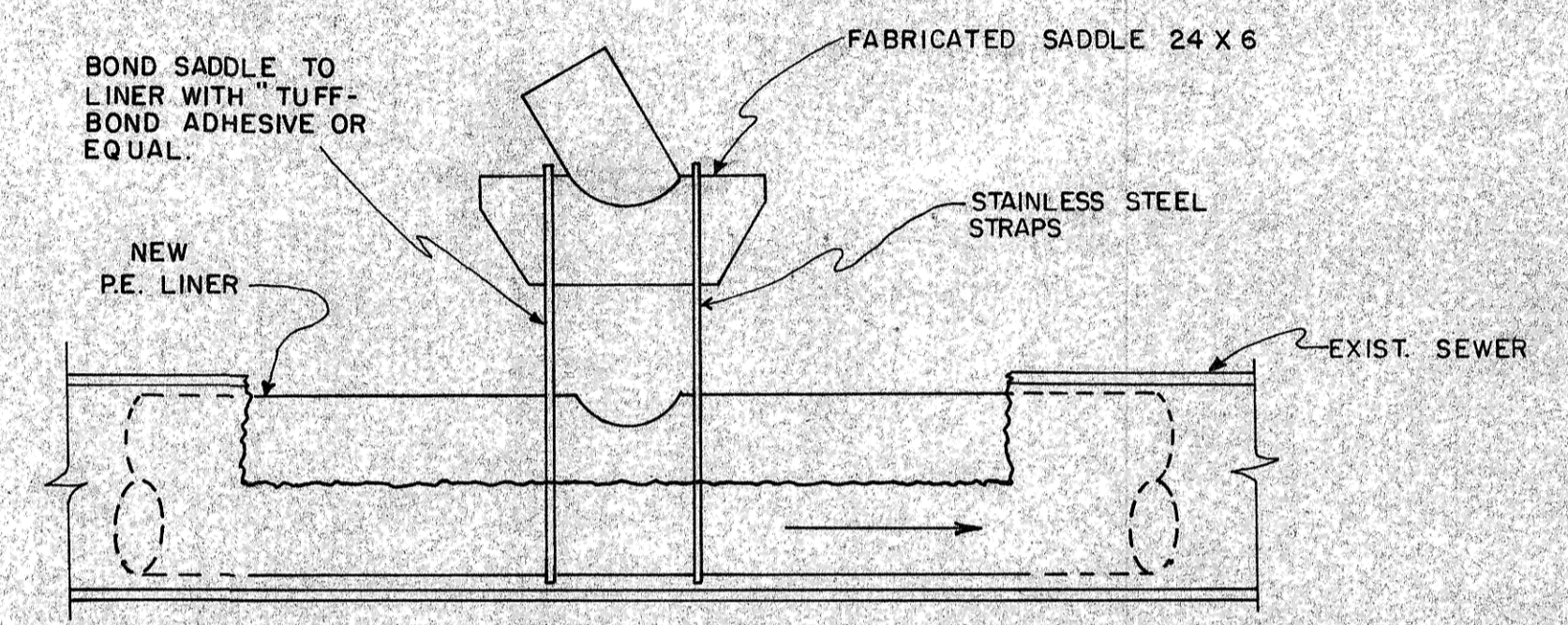
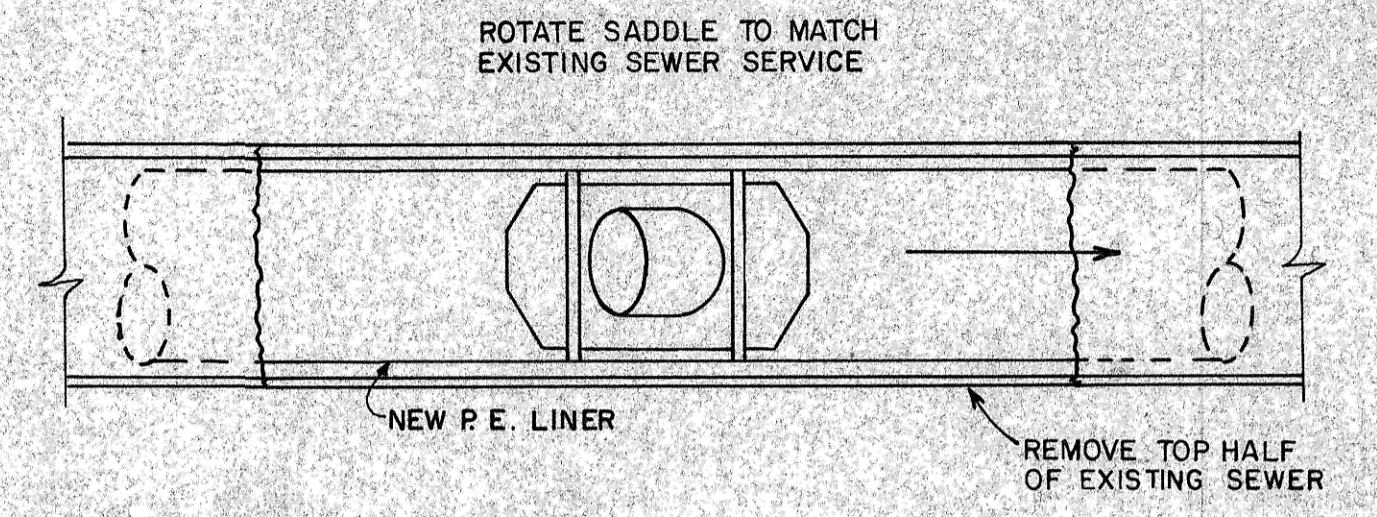


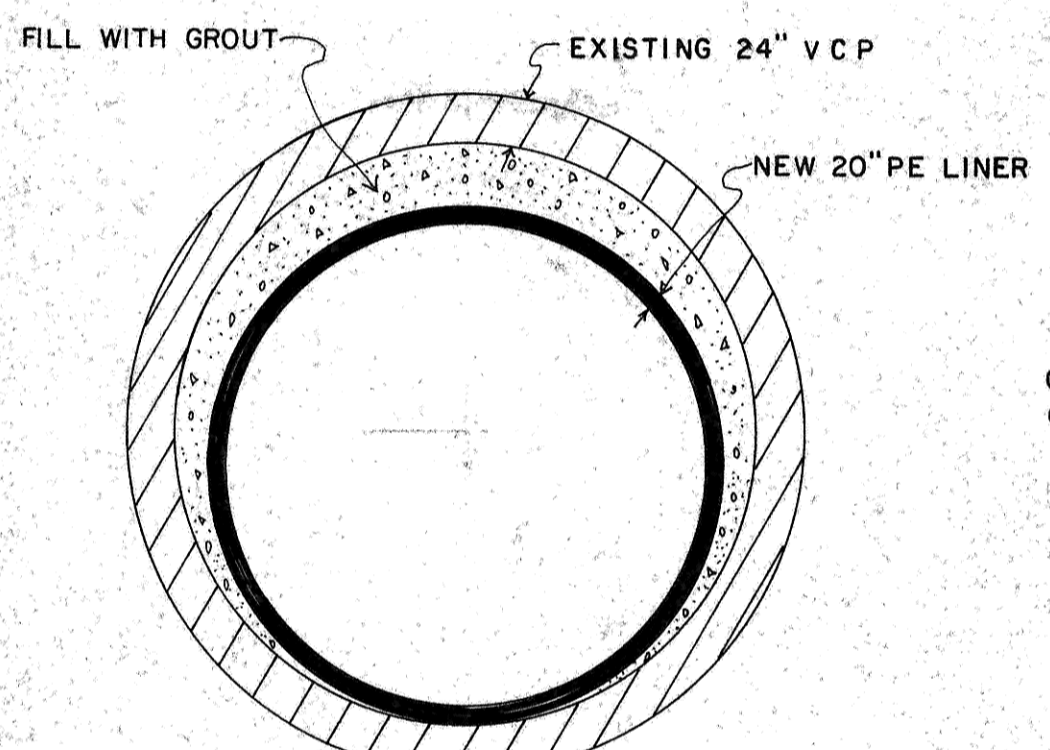
**RECONNECT SANITARY SERVICE**  
N.T.S.



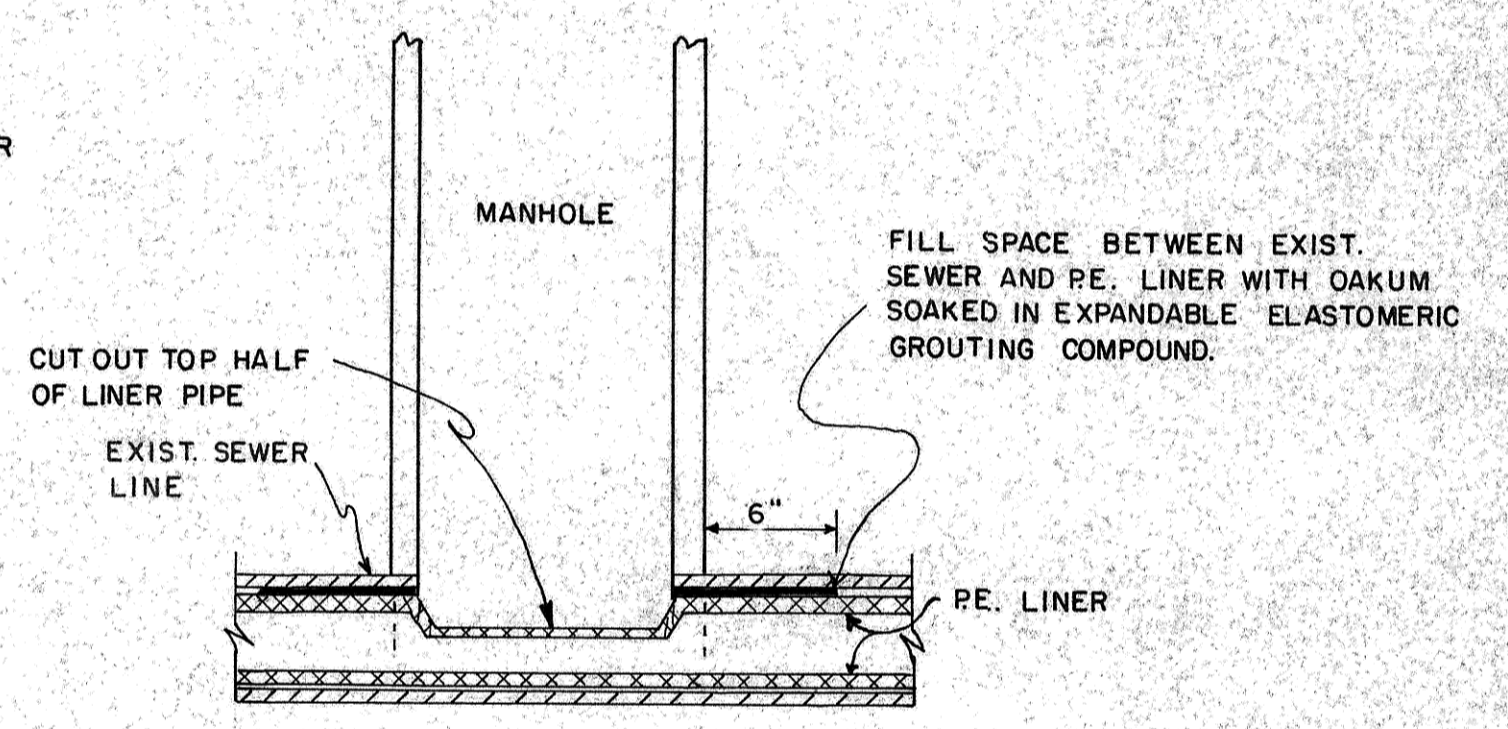
**SANITARY MANHOLE DETAIL**  
N.T.S.



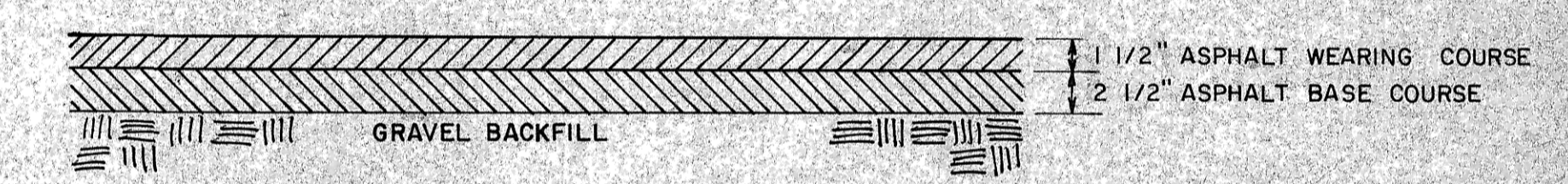
**SADDLE CONNECTION TO P.E. LINER**  
N.T.S.



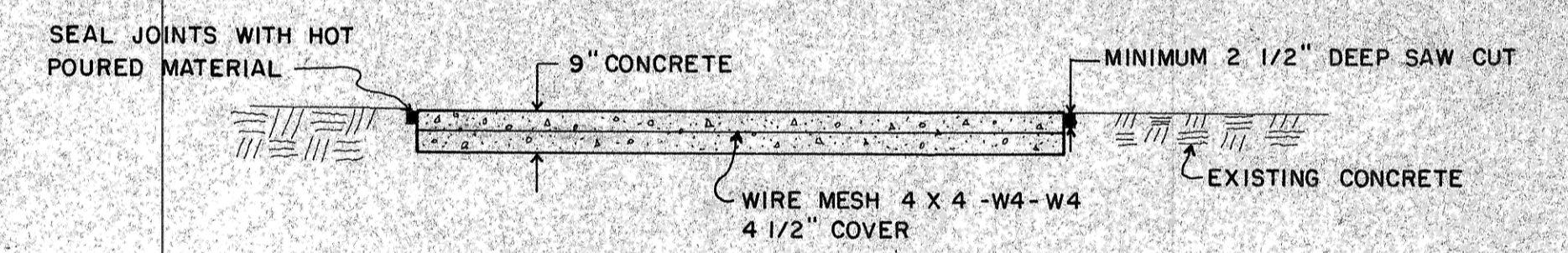
**GROUT INSTALLATION DETAIL**  
N.T.S.



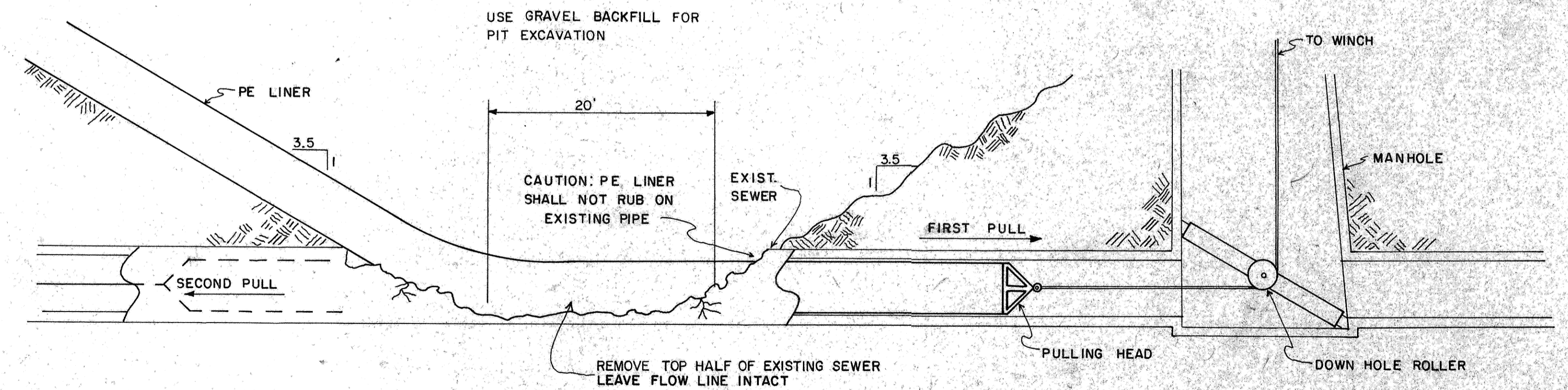
**LINER CONNECTION AT MANHOLE**  
N.T.S.



**ASPHALT REPLACEMENT DETAIL**  
N.T.S.



**CONCRETE REPLACEMENT DETAIL**  
N.T.S.



**TYPICAL PULLING PIT EXCAVATION**  
N.T.S.

STA. 3+57

Record Drawing



| REV. | DATE | DESCRIPTION | BY |
|------|------|-------------|----|
|      |      |             |    |
|      |      |             |    |
|      |      |             |    |
|      |      |             |    |

|   |                     |                  |
|---|---------------------|------------------|
| MANDAN INTERCEPTOR PHASE III<br>MANDAN, NORTH DAKOTA                                      |                     |                  |
| DETAILS   |                     |                  |
| ULTEIG ENGINEERS, INC. CONSULTING ENGINEERS • ARCHITECT<br>FARGO • BISMARCK • MINNEAPOLIS |                     |                  |
| DRAWN BY: <i>aw</i>   | SCALE: AS SHOWN     | PROJECT NO. 4242 |
| CHECKED BY: <i>RR</i>   | DATE: JANUARY, 1987 | SHEET D-1 of     |
| APPROVED BY: <i>RR</i>  |                     |                  |

