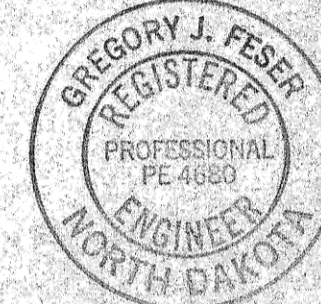


**CONSTRUCTION PLANS FOR
LIFT STATION & SANITARY FORCEMAIN
IMPROVEMENTS IN
LAKEWOOD HARBOR 2ND ADDITION
MANDAN, NORTH DAKOTA**

DESIGN ENGINEER'S CERTIFICATE

I, GREGORY J. FESER, A REGISTERED PROFESSIONAL ENGINEER IN THE STATE OF NORTH DAKOTA, HEREBY CERTIFY THAT THE CIVIL ENGINEERING PORTION OF THE PLANS FOR FOR CONSTRUCTION OF LIFT STATION AND SANITARY FORCEMAIN IMPROVEMENTS IN SEWER IMPROVEMENT DISTRICT NO. 27, PROJECT NO. 2003-09, MANDAN, NORTH DAKOTA WERE PREPARED UNDER MY SUPERVISION AND ARE COMPLETE AND CORRECT TO THE BEST OF MY KNOWLEDGE AND BELIEF.



Gregory J. Feser
GREGORY J. FESER, P.E.
REGISTERED PROFESSIONAL ENGINEER
NORTH DAKOTA REGISTRATION NO. 4680

ELECTRICAL ENGINEER'S CERTIFICATE

I, GREGORY R. DOCKTER, A REGISTERED PROFESSIONAL ENGINEER IN THE STATE OF NORTH DAKOTA, HEREBY CERTIFY THAT THE ELECTRICAL ENGINEERING PORTION OF THE PLANS FOR FOR CONSTRUCTION OF LIFT STATION AND SANITARY FORCEMAIN IMPROVEMENTS IN SEWER IMPROVEMENT DISTRICT NO. 27, PROJECT NO. 2003-09, MANDAN, NORTH DAKOTA WERE PREPARED UNDER MY SUPERVISION AND ARE COMPLETE AND CORRECT TO THE BEST OF MY KNOWLEDGE AND BELIEF.



Gregory R. Dockter
GREGORY R. DOCKTER, P.E.
REGISTERED PROFESSIONAL ENGINEER
NORTH DAKOTA REGISTRATION NO. 2315

APPROVAL OF CITY ENGINEER

I, THOMAS LITTLE, CITY ENGINEER FOR THE CITY OF MANDAN, NORTH DAKOTA, HEREBY APPROVE THESE PLANS FOR CONSTRUCTION OF LIFT STATION AND SANITARY FORCEMAIN IMPROVEMENTS IN SEWER IMPROVEMENT DISTRICT NO. 27, PROJECT NO. 2003-09, MANDAN, NORTH DAKOTA, AS SHOWN ON THE ACCOMPANYING PLANS.

Thomas Little
THOMAS LITTLE, P.E.
REGISTERED PROFESSIONAL ENGINEER
CITY ENGINEER
MANDAN, NORTH DAKOTA

DESIGN ENGINEER

SWENSON, HAGEN & CO.

SHEET INDEX

TITLE PAGE	SHEET 1
FORCEMAIN	SHEET C1
FORCEMAIN	SHEET C2
FORCEMAIN	SHEET C3
DETAILS	SHEET C4
ELECTRICAL DETAILS	SHEET E1
ELECTRICAL DETAILS	SHEET E2

WARRANTY / DISCLAIMER

The designs represented in these plans are in accordance with established practices of civil engineering. However, neither Swenson, Hagen & Co. nor its personnel can or do warranty these plans as constructed except in the specific cases where Swenson, Hagen & Co personnel inspect and control the physical construction on a full time basis.

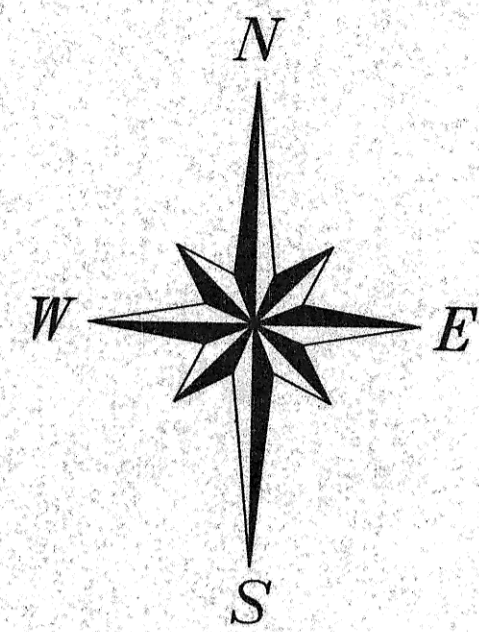
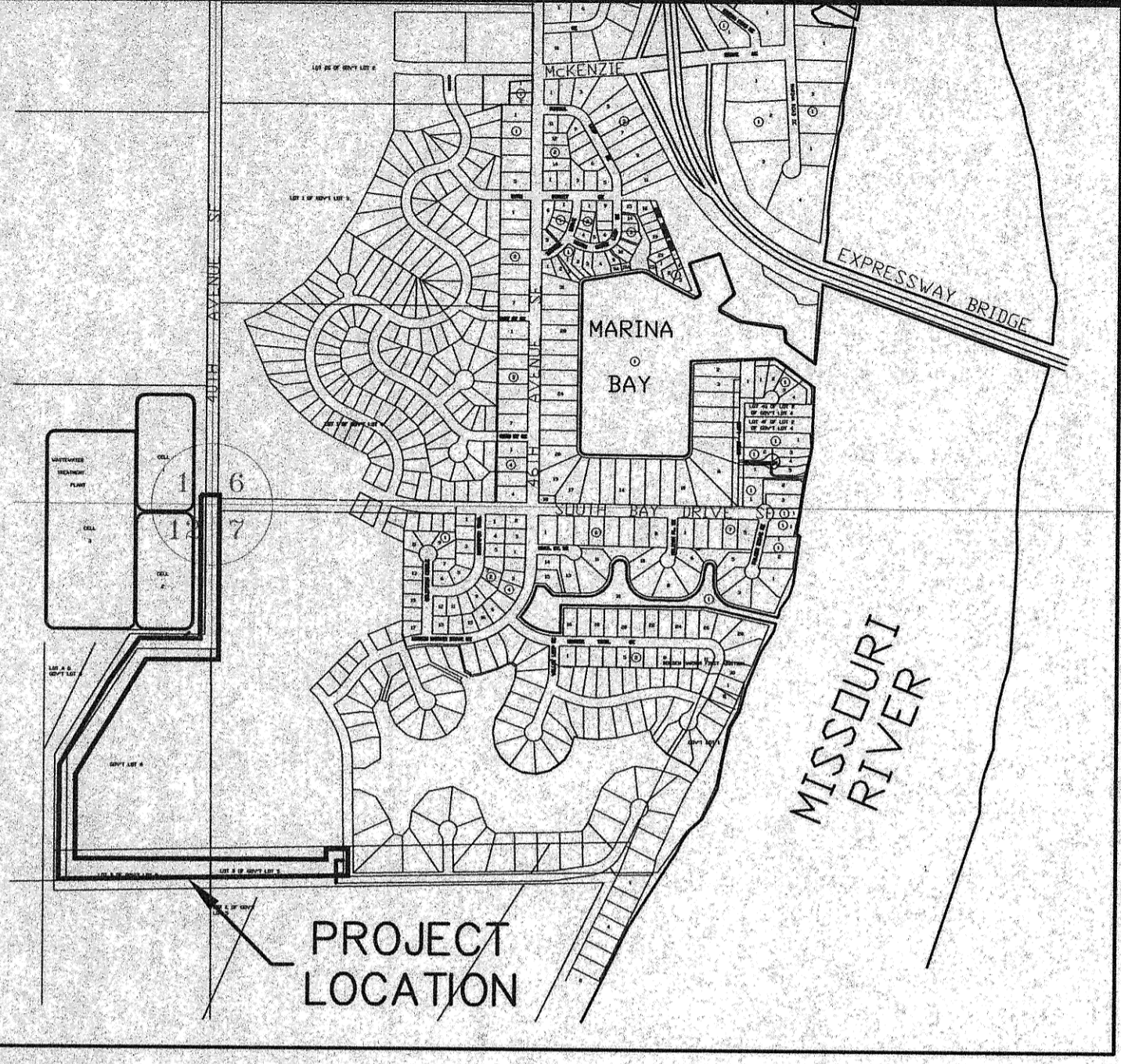
SAFETY NOTICE TO CONTRACTOR

In accordance with generally accepted construction practices the Contractor will be solely and completely responsible for conditions of the job site, including safety of all persons and property during performance of the work. This requirement will apply continuously and not be limited to normal business hours.

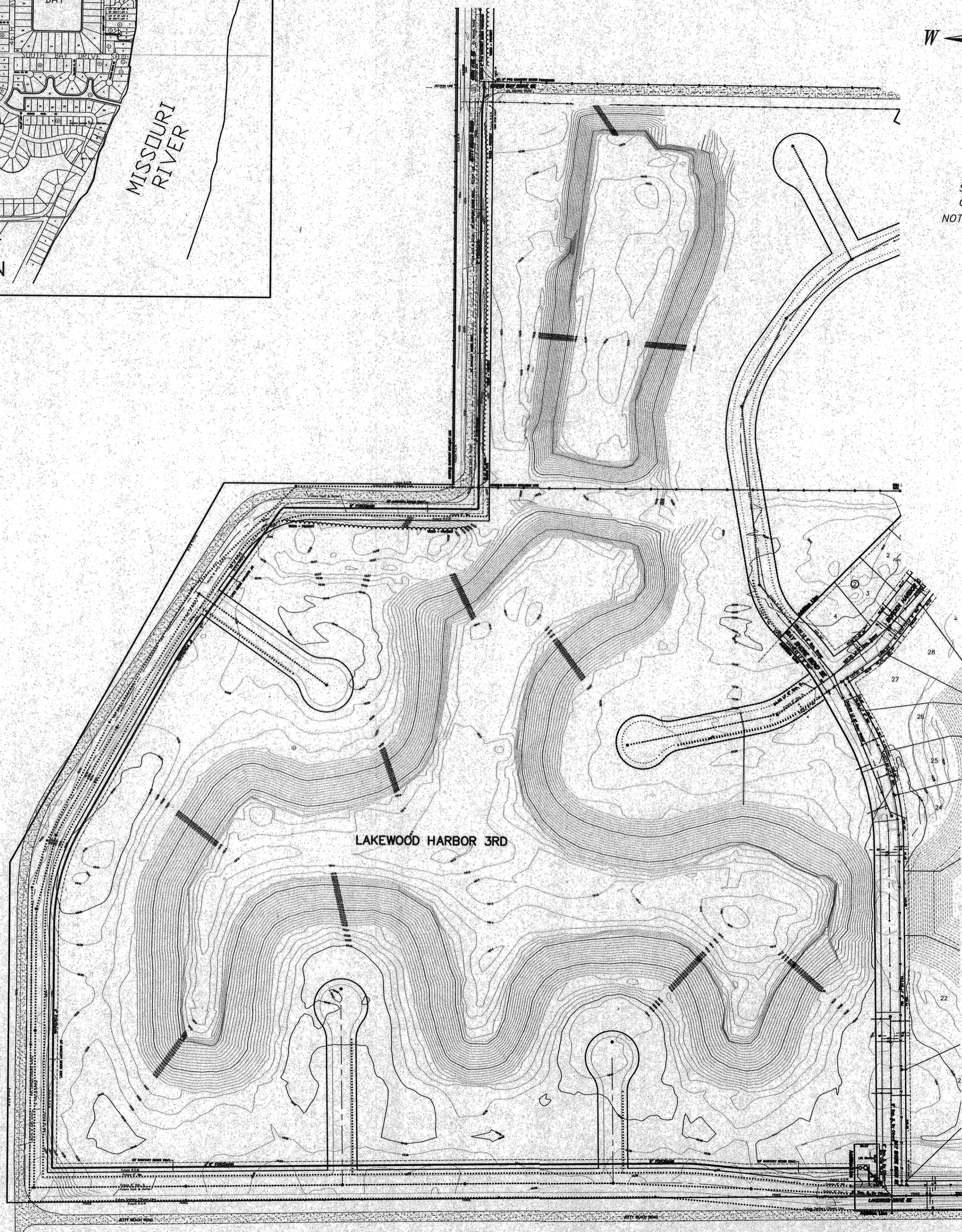
UTILITY NOTICE TO CONTRACTOR

The location of existing underground utilities are shown in an approximate way only and have not been independently verified by the Owner or its representatives. The Contractor shall determine the exact location of all existing utilities before commencing work, and agrees to be fully responsible for any and all damages which might be occasioned by the Contractor's failure to exactly locate and preserve any and all underground utilities. Underground locates can be made by using the "One Call" number 1-800-795-0555.

Project Completion: October 2004
Project Acceptance: November 2, 2004
Contractor: Titus Excavating, Inc.
Subcontractors: Electric Pump, Inc.
Sweeney Control Co.
Edling Electric, Inc.
S4B Landscaping
Brendel Lawn Sprinkling

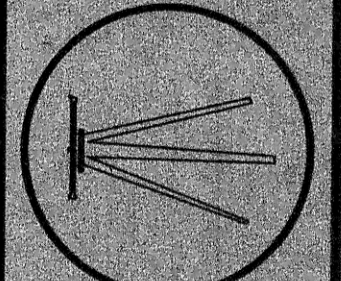


SCALE 1" = 150'
Overall Schematic
NOT FOR CONSTRUCTION



**SEWER IMPROVEMENT DISTRICT NO. 27
PROJECT NO. 2003-09**

SWENSON, HAGEN & CO. P.C.
PLANNING CIVIL ENGINEERING SURVEYING
SITE DESIGN CONSTRUCTION MANAGEMENT
909 BASIN AVE P.O. BOX 1136
BISMARCK, N.D. 58504
(701) 223-2600
FAX (701) 223-2606



DRAWN BY: _____
CHECK BY: GJF
DATE: 6-25-03
FILE DESC: _____
COMPUTER FILE: _____
SURVEY FILE: _____

**SHEET
1 OF 7**

Record Drawing

D27 2003-09

8