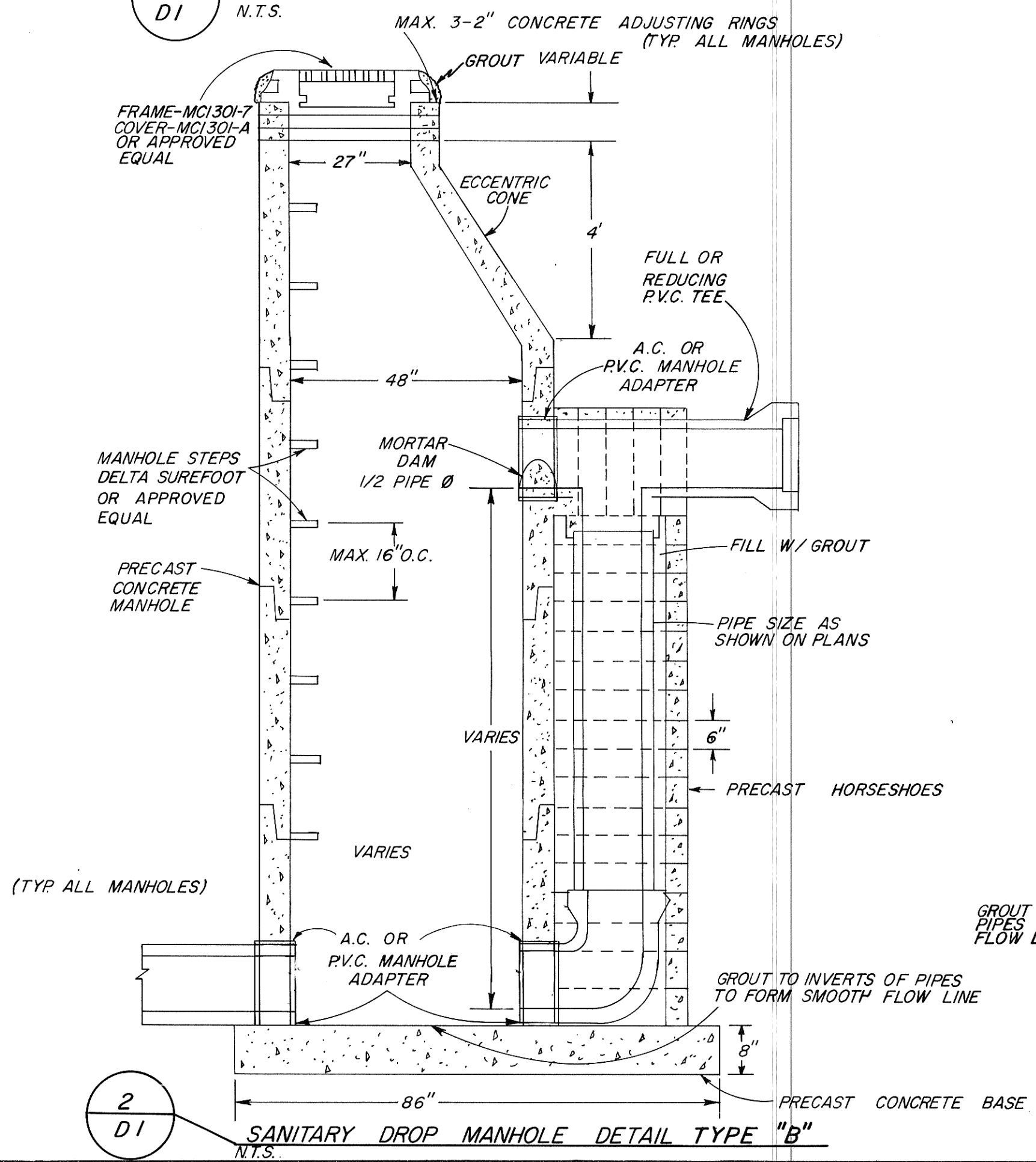
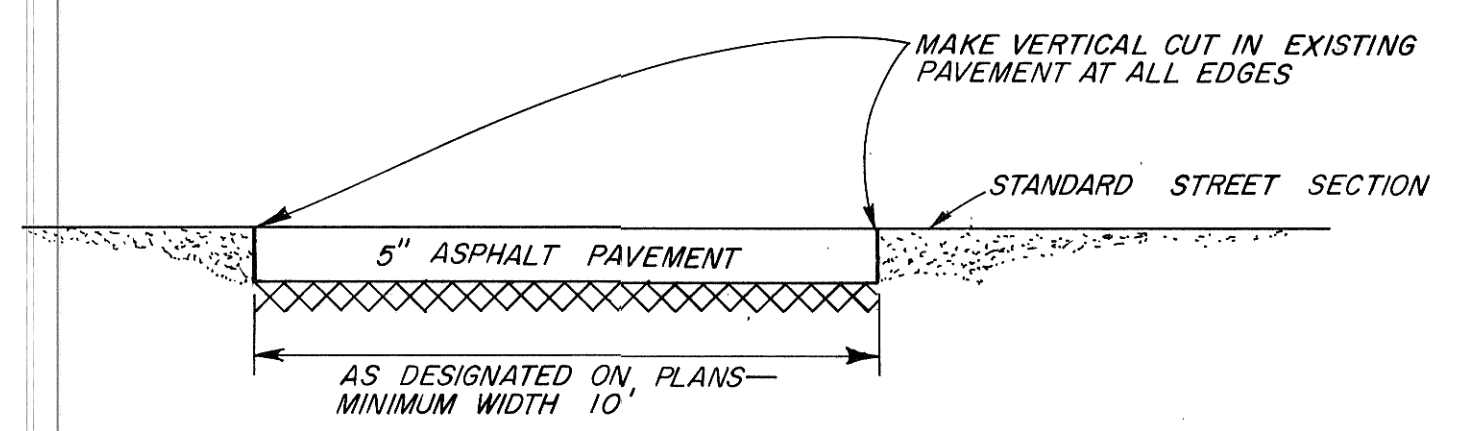


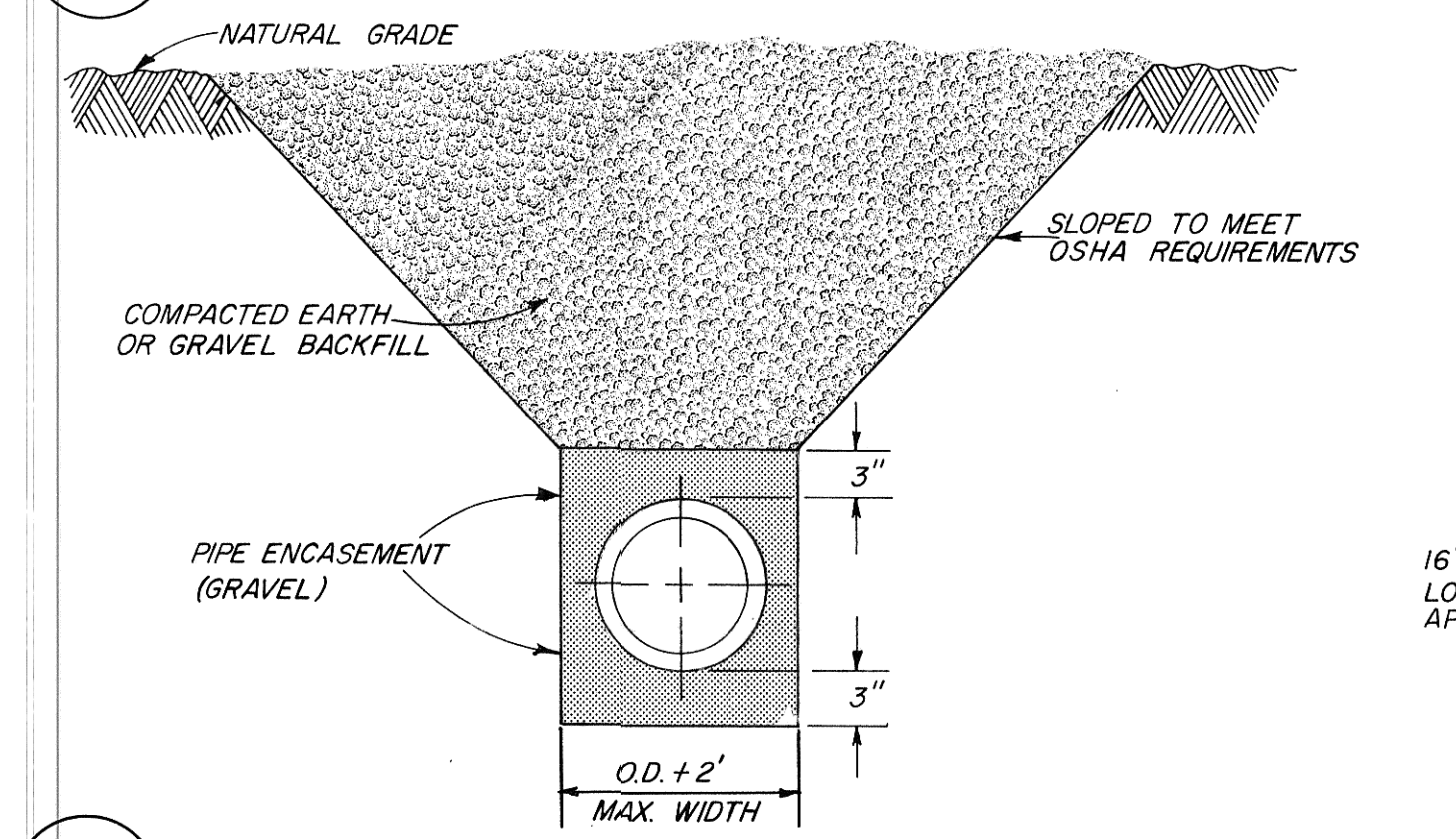
1 SANITARY MANHOLE DETAIL TYPE "A"  
D1 N.T.S.



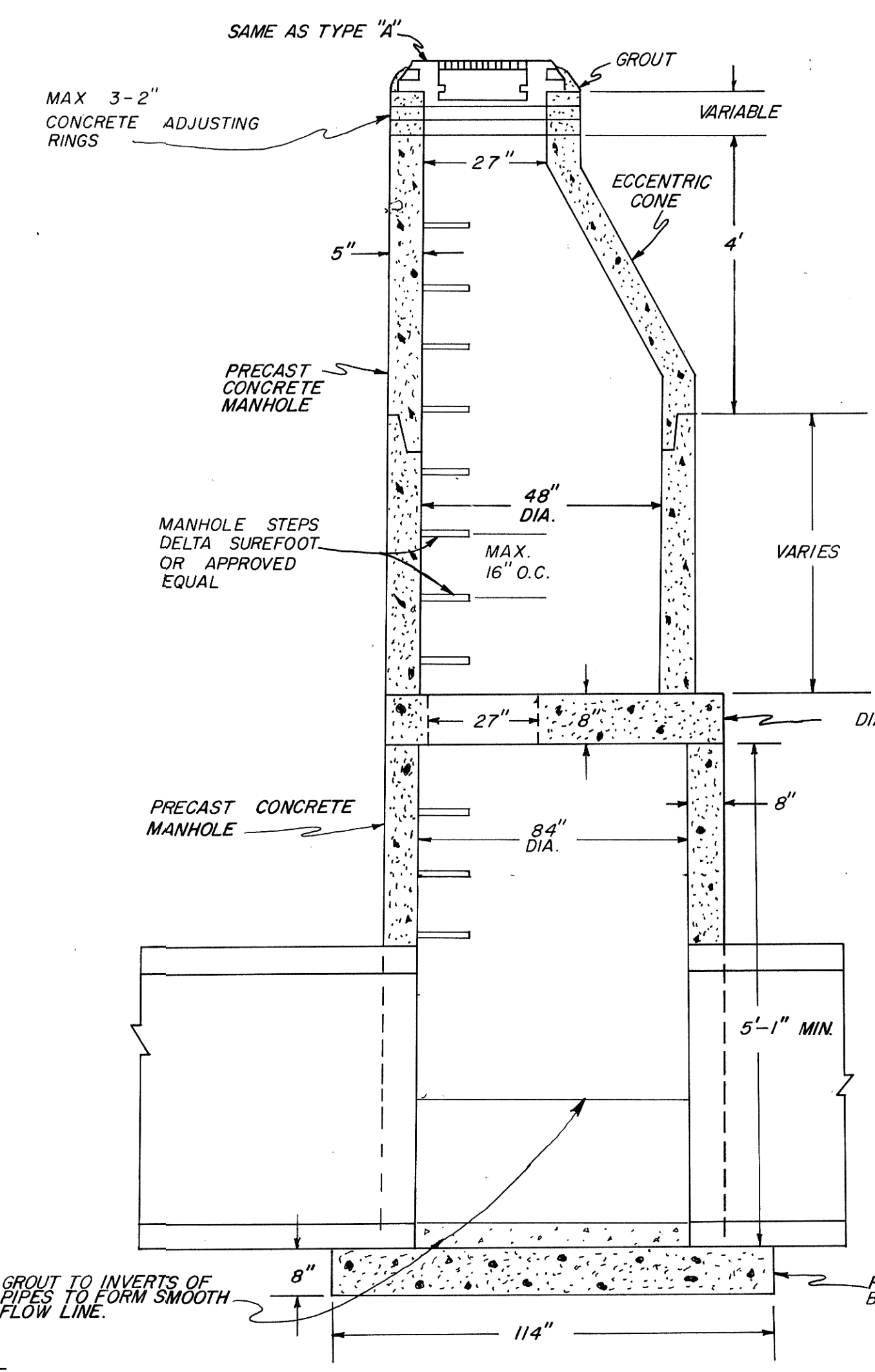
2 SANITARY DROP MANHOLE DETAIL TYPE "B"  
D1 N.T.S.



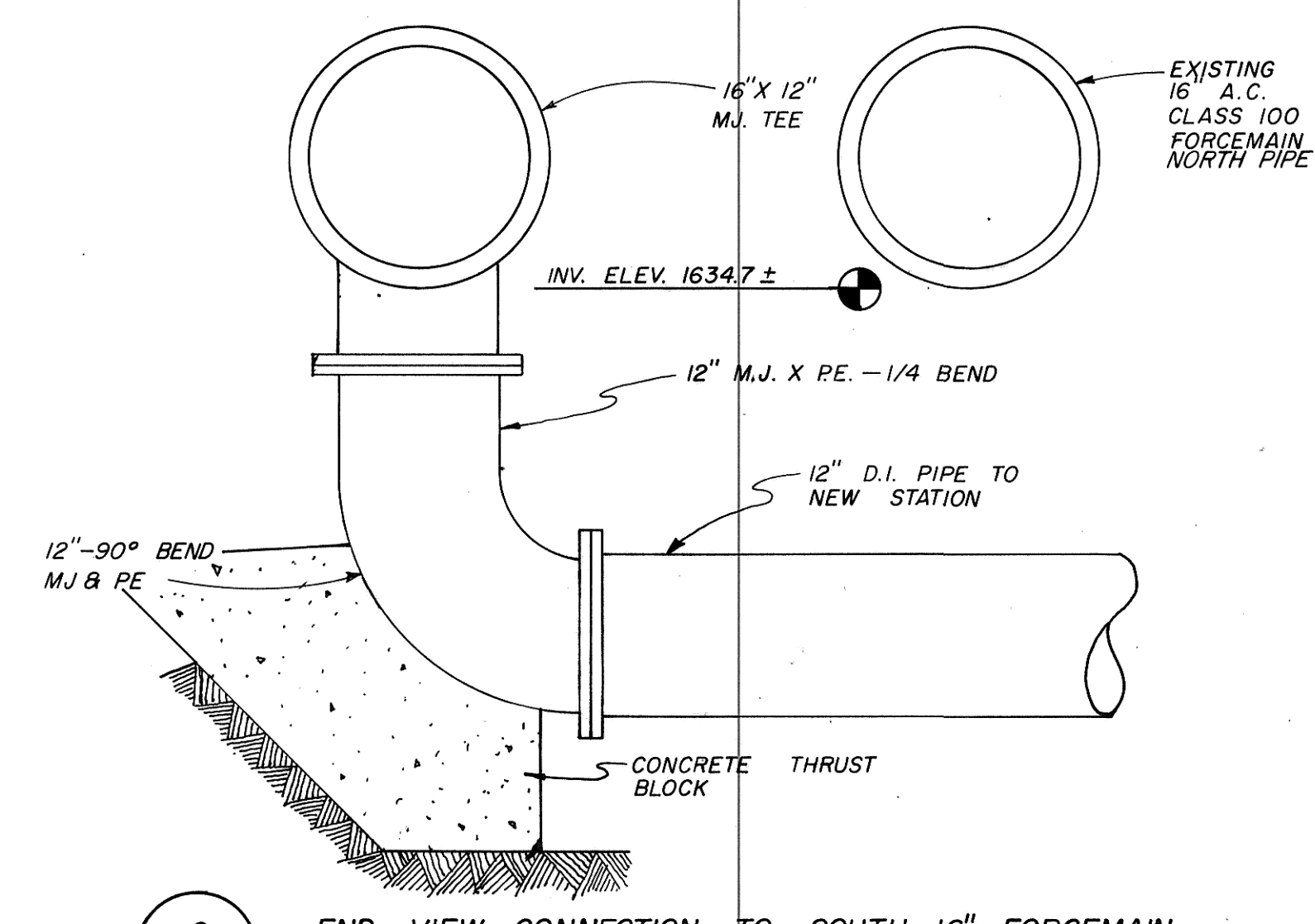
4 5" ASPHALT PAVEMENT PATCH DETAIL  
D1



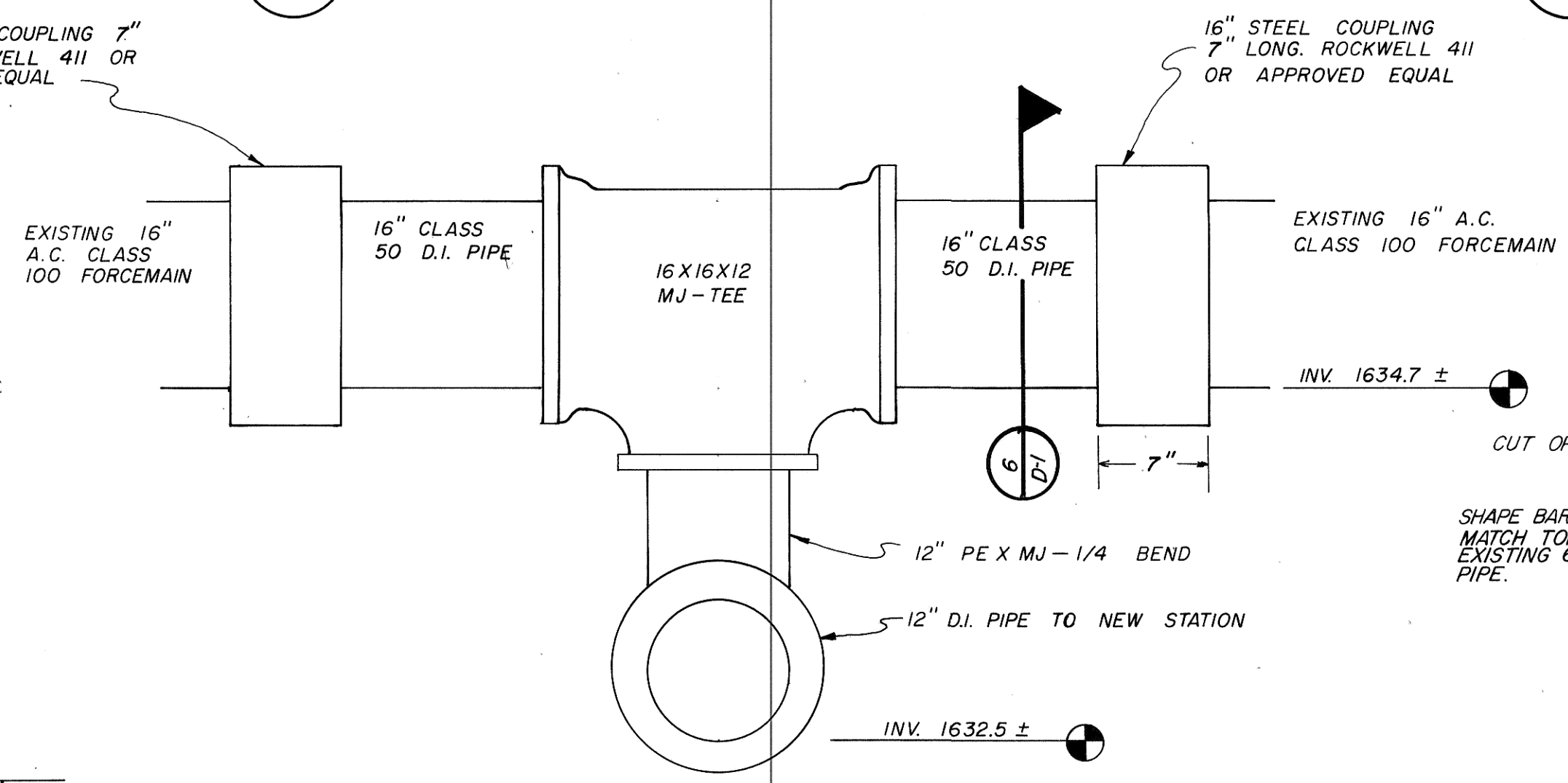
5 SEWER PIPE TRENCH BACKFILL DETAIL  
D1 N.T.S.



3 SANITARY MANHOLE DETAIL TYPE "C"  
D1 N.T.S.

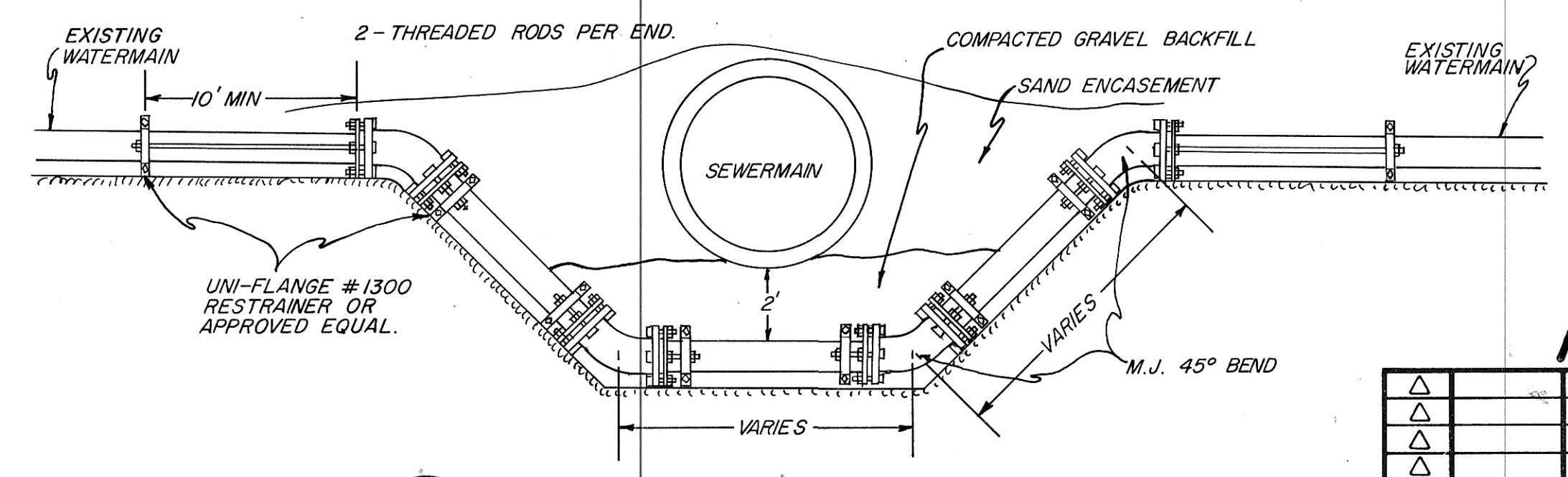


6 END VIEW CONNECTION TO SOUTH 16" FORCEMAIN  
D1



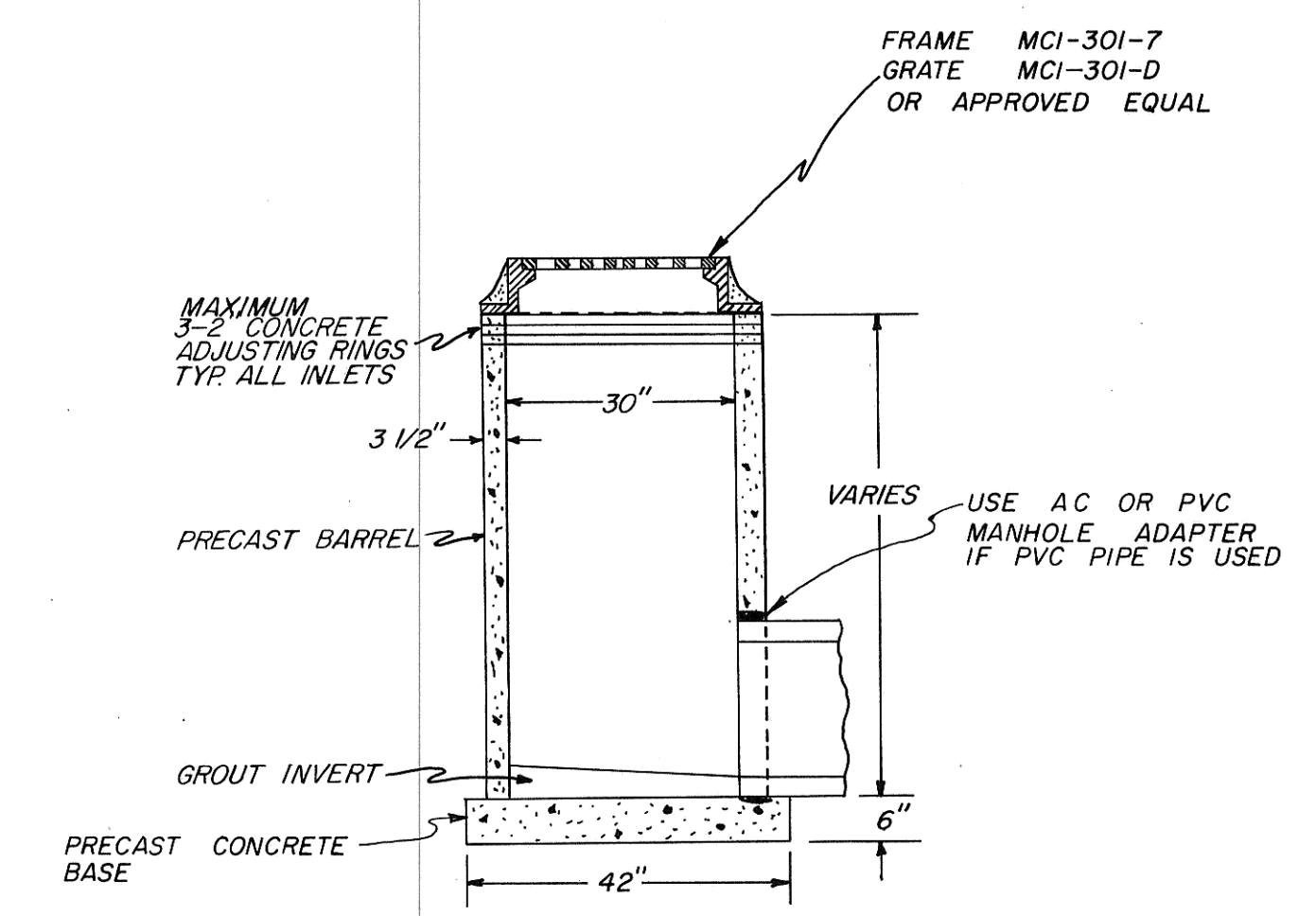
7 ELEVATION VIEW CONNECTION TO SOUTH 16" FORCEMAIN  
D1 D.I. PIPE, FITTINGS & STEEL COUPLINGS ARE PAY ITEMS. ALL OTHER CONNECTIONS AND MATERIALS ARE INCIDENTAL.

NOTE:  
CONNECTION TO NORTH 16" FORCEMAIN WILL BE THE SAME AS SHOWN ABOVE, EXCEPT THAT TEE WILL BE HORIZONTAL AND NO 1/4 BEND WILL BE REQUIRED.

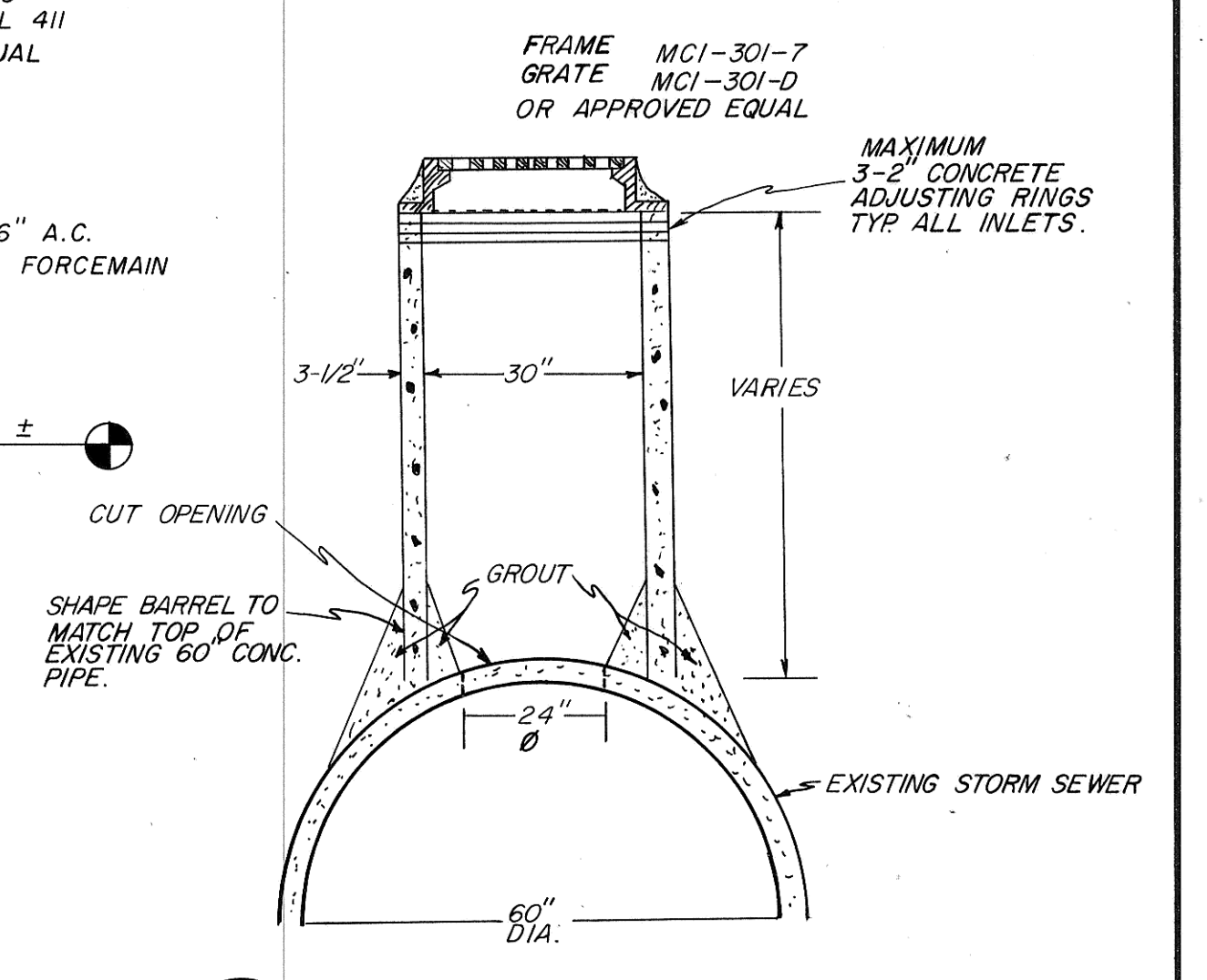


10 WATERMAIN LOWERING DETAIL  
D1 N.T.S.

WATERMAIN SIZE	THREADED ROD SIZE
4"	3/4"
6"	3/4"
8"	3/4"
10"	7/8"
12"	7/8"



8 CATCH BASIN "A"  
D1 N.T.S.



9 CATCH BASIN "B"  
D1 N.T.S.



PHASE III

REV.	DATE	DESCRIPTION	BY

**MANDAN INTERCEPTOR 1984**  
**MANDAN, NORTH DAKOTA**

DETAIL SHEET

ULTEIG ENGINEERS, INC. CONSULTING ENGINEERS • ARCHITECT  
FARGO • BISMARCK • MINNEAPOLIS

DRAWN BY: JFM SCALE: AS SHOWN PROJECT NO. 4241  
CHECKED BY: [Signature] DATE: MAY 1984 SHEET D-1 of [Total]

APPROVED BY: [Signature]

Revised Drawing