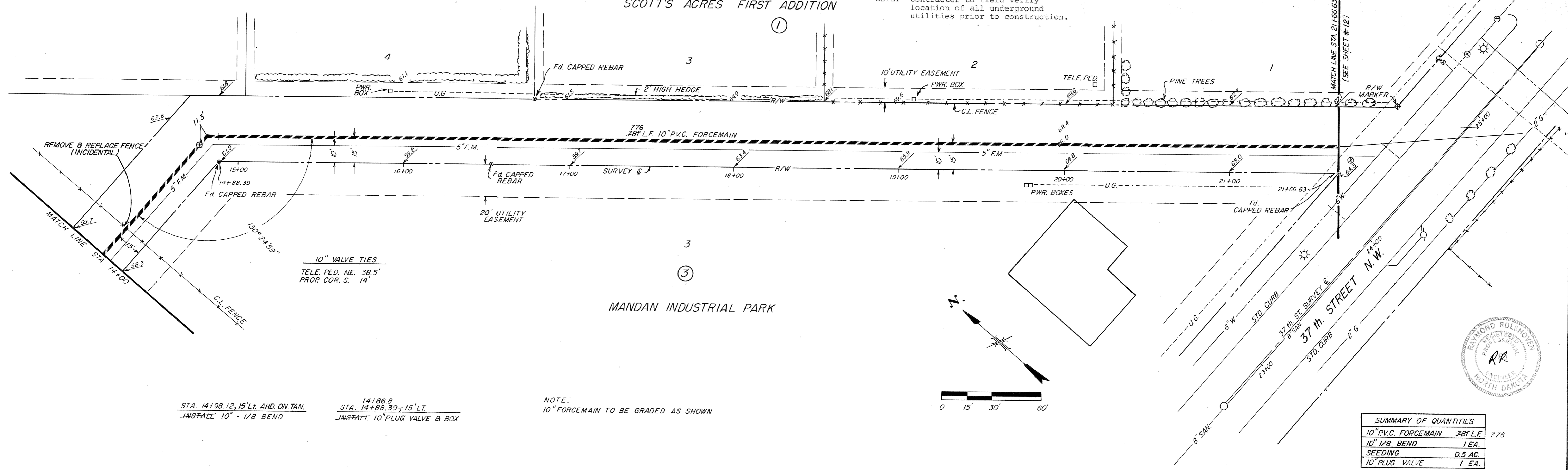


SCOTT'S ACRES FIRST ADDITION

NOTE: Contractor to field verify location of all underground utilities prior to construction.

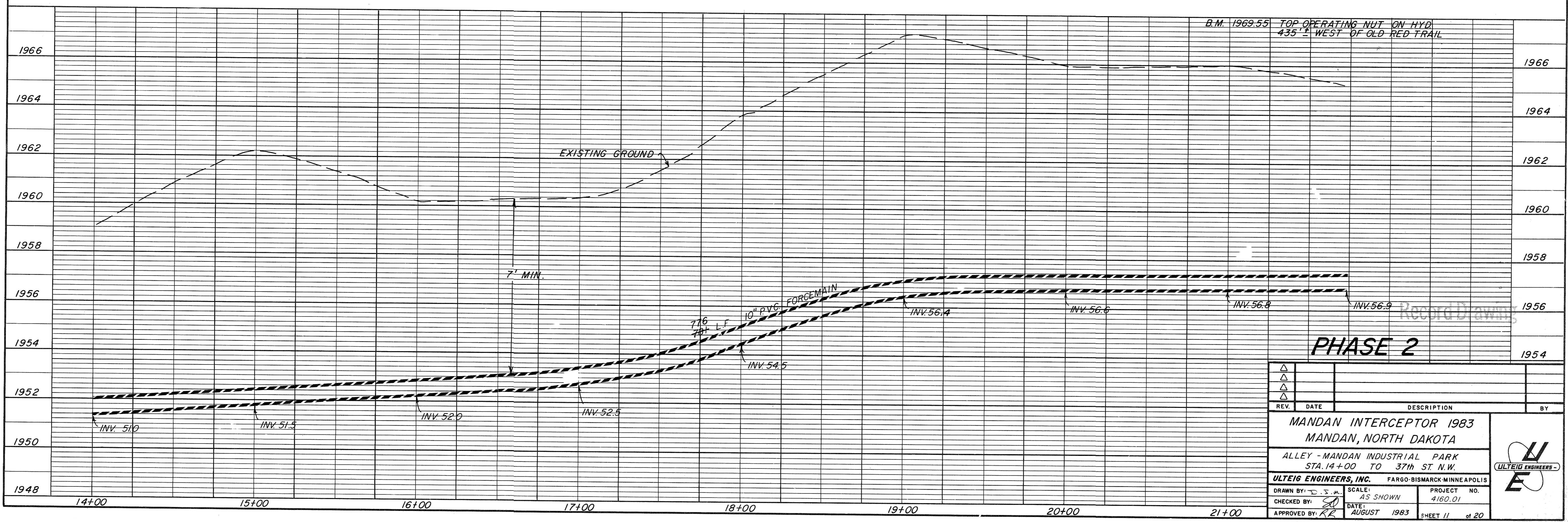


STA. 14+98.12, 15' L. AND ON TAN.  
INSTALL 10" - 1/8 BEND

STA. 14+86.8  
14+88.39, 15' L.T.  
INSTALL 10" PLUG VALVE & BOX

NOTE:  
10" FORCEMAIN TO BE GRADED AS SHOWN

SUMMARY OF QUANTITIES	
10" P.V.C. FORCEMAIN	281 L.F.
10" 1/8 BEND	1 EA.
SEEDING	0.5 AC.
10" PLUG VALVE	1 EA.



PHASE 2

REV.	DATE	DESCRIPTION	BY

<b>MANDAN INTERCEPTOR 1983</b>	
MANDAN, NORTH DAKOTA	
ALLEY - MANDAN INDUSTRIAL PARK	
STA. 14+00 TO 37th ST. N.W.	
<b>ULTEIG ENGINEERS, INC.</b>	FARGO-BISMARCK-MINNEAPOLIS
DRAWN BY: D.S.M.	SCALE: AS SHOWN
CHECKED BY: [Signature]	PROJECT NO. 4160.01
APPROVED BY: RR	DATE: AUGUST 1983
SHEET 11 of 20	