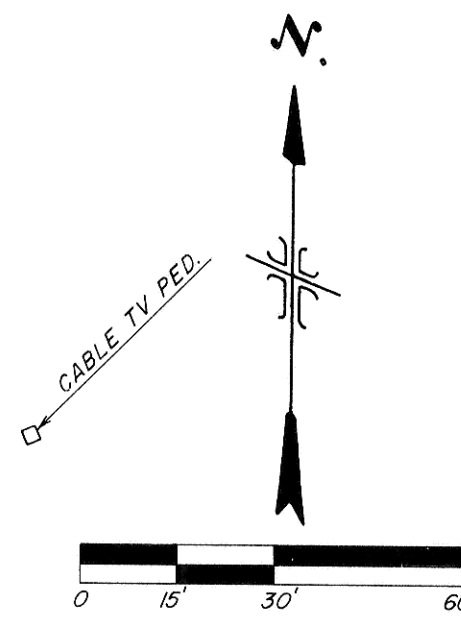
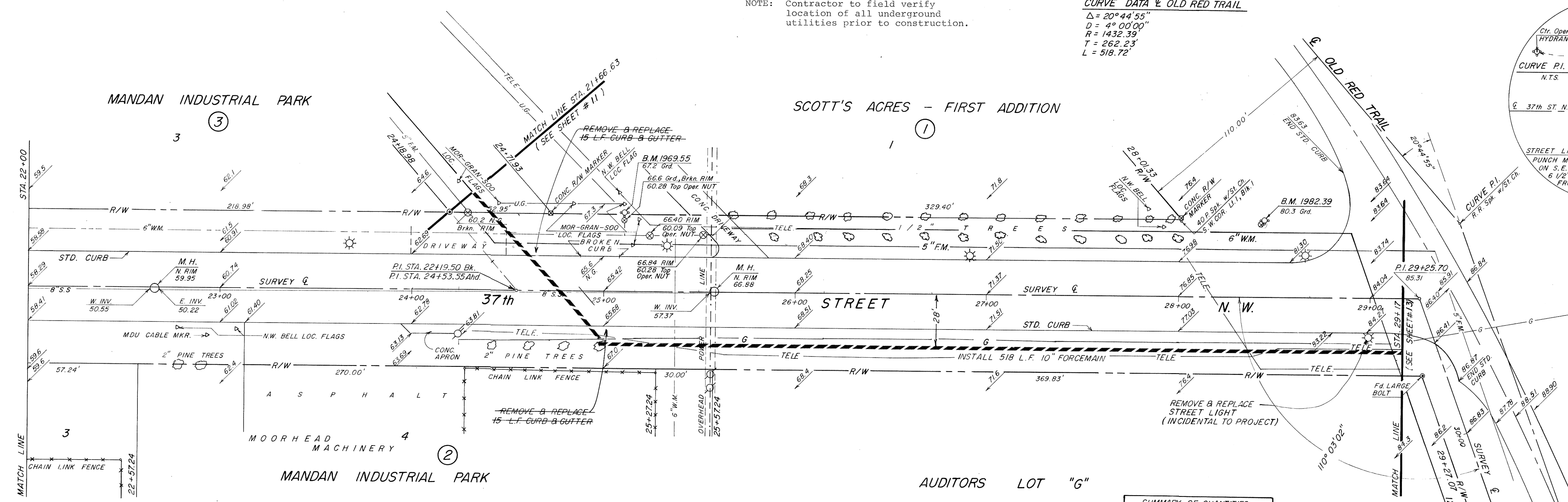
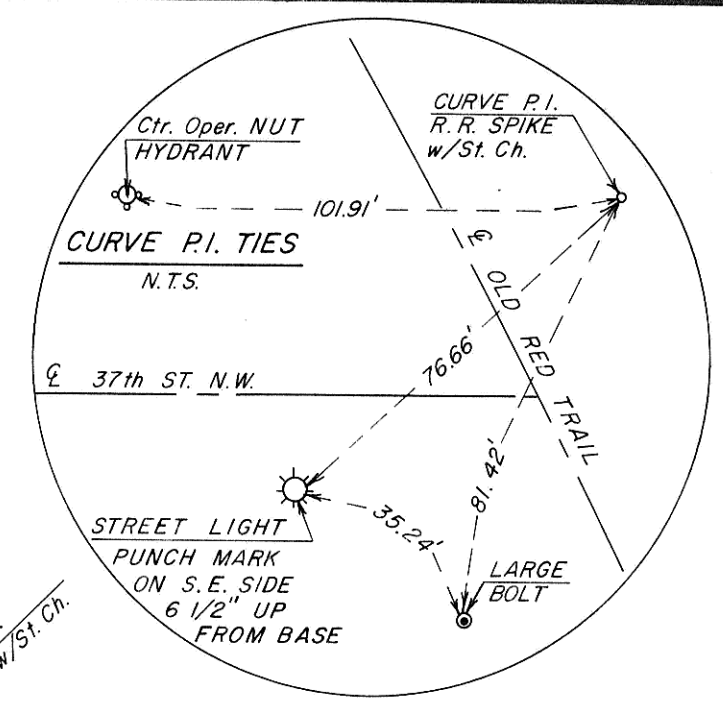


NOTE: Contractor to field verify location of all underground utilities prior to construction.

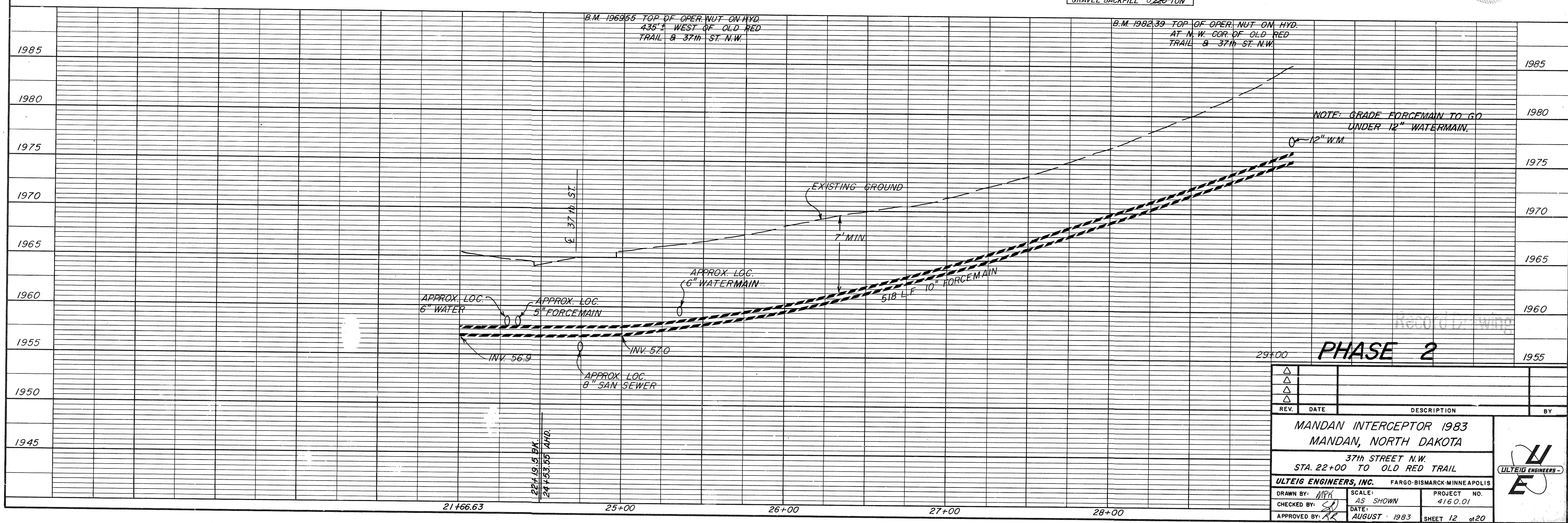
CURVE DATA @ OLD RED TRAIL
 $\Delta = 20^{\circ}44'55''$
 $D = 4^{\circ}00'00''$
 $R = 1432.39$
 $T = 262.23$
 $L = 516.72$



NOTE: FORCEMAIN SHALL HAVE MINIMUM OF 7' COVER EXCEPT WHERE GRADING IS REQUIRED.

SUMMARY OF QUANTITIES	
10" P.V.C. FORCEMAIN	518 L.F.
10" 1/8 BEND	1 EA.
REMOVE & REPLACE C&G 0.30' L.F.	
REMOVE & REPLACE ASPHALT	65.64 S.Y.
SEEDING	0.3 AC.
GRAVEL BACKFILL	0.220 TON

STA. 21+86, 15' LT. OF ALLEY SURVEY @ P.I. FORCEMAIN
 STA. 25+11, 28' RT. INSTALL 10" 1/8 BEND
 REMOVE & REPLACE PAVEMENT 12x48' = 64 S.Y.



PHASE 2

REV.	DATE	DESCRIPTION	BY

MANDAN INTERCEPTOR 1983
 MANDAN, NORTH DAKOTA
 37th STREET N.W.
 STA. 22+00 TO OLD RED TRAIL

ULTEIG ENGINEERS, INC. FARGO-BISMARCK-MINNEAPOLIS

DRAWN BY: MPK
 CHECKED BY: [Signature]
 APPROVED BY: RR

SCALE: AS SHOWN
 DATE: AUGUST 1993
 PROJECT NO. 4160.01
 SHEET 12 of 20