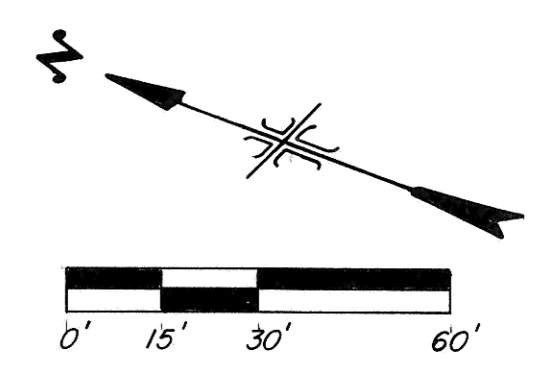
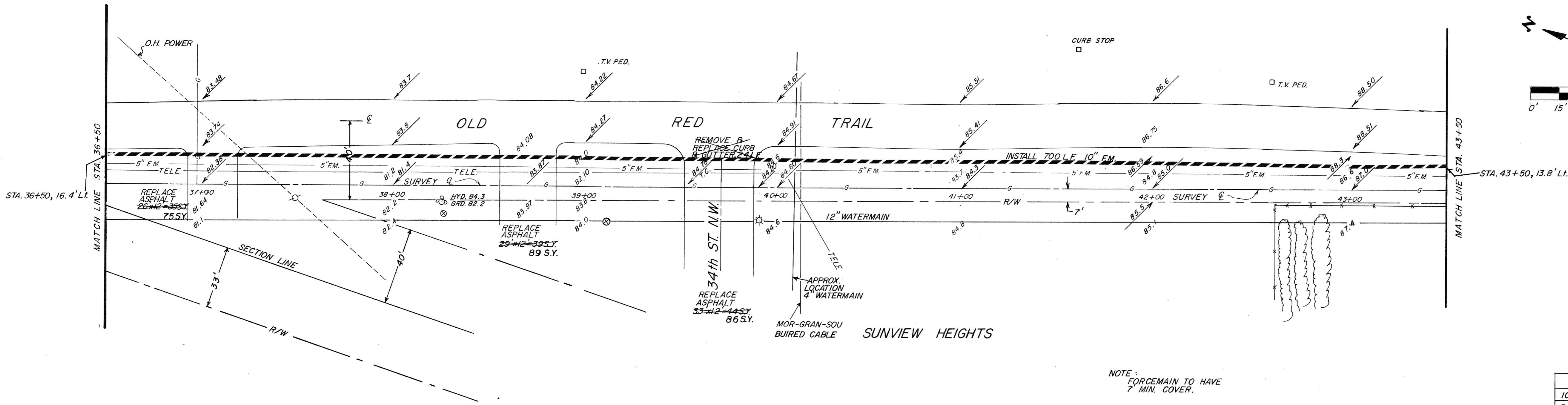


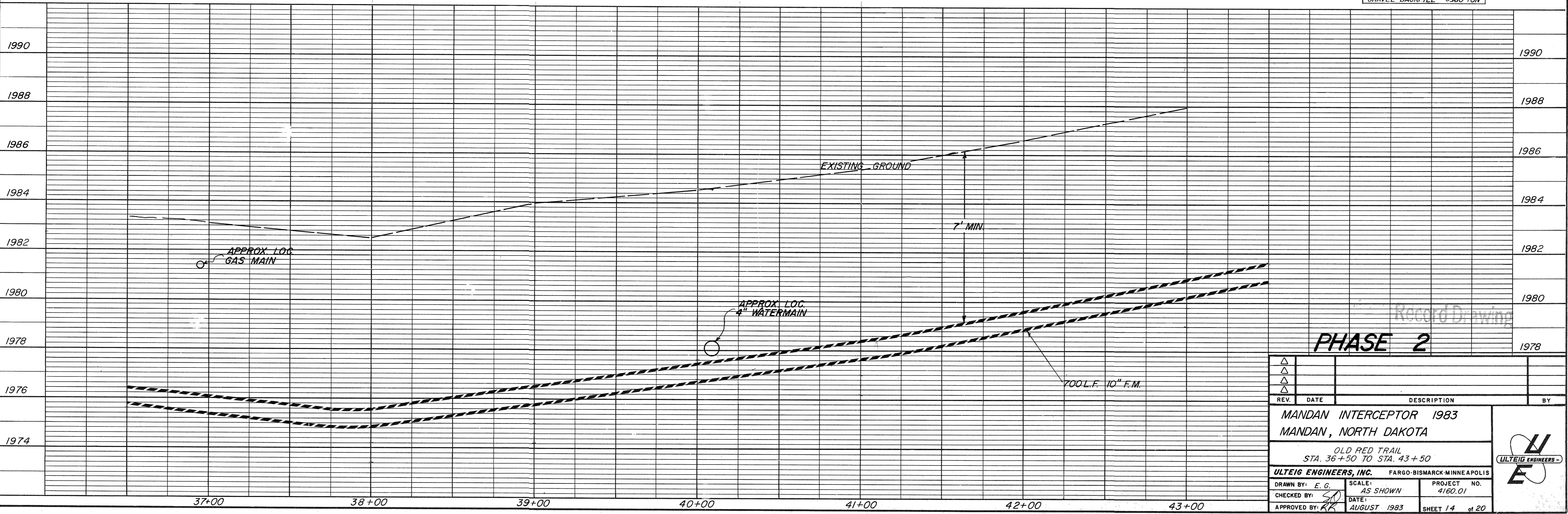
NOTE: Contractor to field verify location of all underground utilities prior to construction.

NOTE: REMOVE & REPLACE ASPHALT ON WEST SIDE OF OLD RED TRAIL AS NEEDED.



SUMMARY OF QUANTITIES	
10" PVC FORCEMAIN	700 L.F.
REMOVE & REPLACE 5' 250' ASPHALT PAVEMENT	120 S.Y.
CURB & GUTTER REMOVAL & REPLACEMENT	0.24 L.F.
SEEDING	0.5 AC.
REMOVE & REPLACE 3' 0" ASPHALT PAVEMENT	187 S.Y.
GRAVEL BACKFILL	0.130 TON

NOTE: FORCEMAIN TO HAVE 7' MIN. COVER.



Record Drawing  
**PHASE 2**

REV.	DATE	DESCRIPTION	BY

MANDAN INTERCEPTOR 1983  
MANDAN, NORTH DAKOTA

OLD RED TRAIL  
STA. 36+50 TO STA. 43+50

ULTEIG ENGINEERS, INC. FARGO-BISMARCK-MINNEAPOLIS

DRAWN BY: E.G. SCALE: AS SHOWN PROJECT NO. 4160.01  
CHECKED BY: SD DATE: AUGUST 1983 SHEET 14 of 20  
APPROVED BY: KK