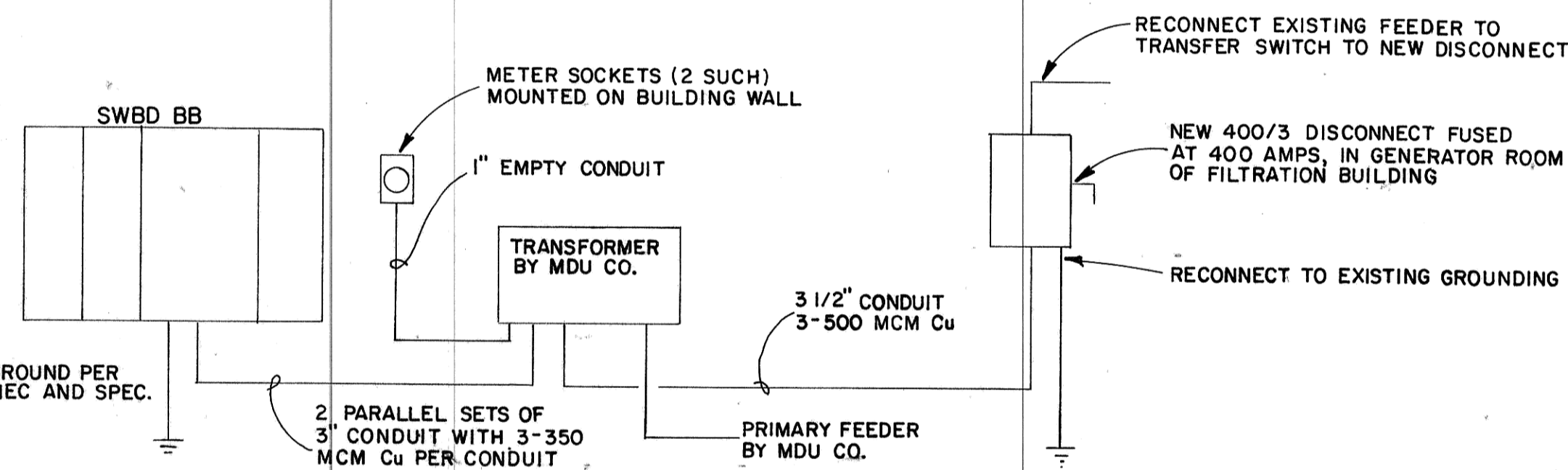


### LIGHT FIXTURE SCHEDULE

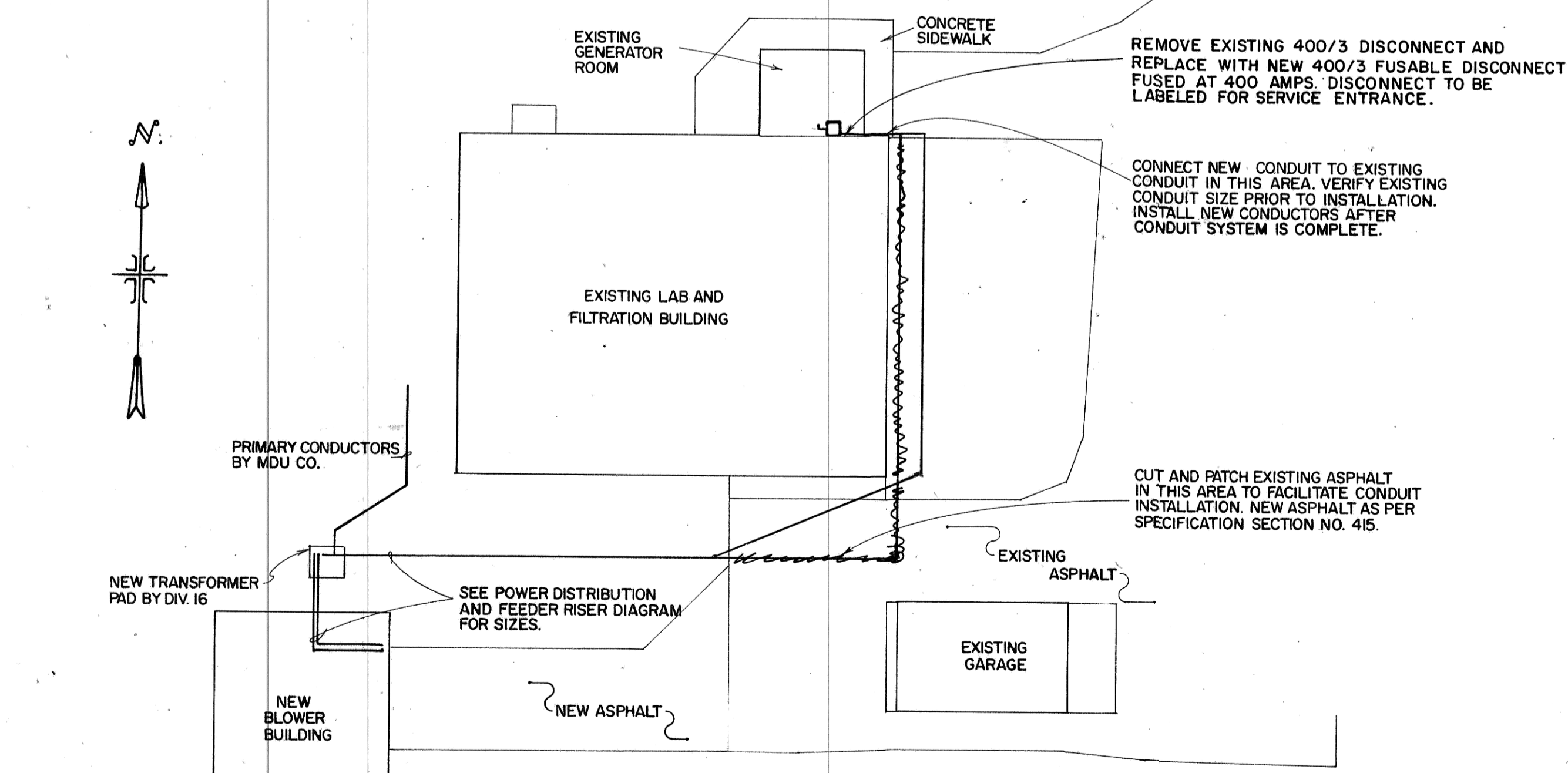
TYPE	MANUFACTURER	DESCRIPTION	VOLTAGE	LAMPS
A	KILLARK NO. VFCA-100	INDUSTRIAL VAPORTIGHT INCANDESCENT PENDANT MOUNT AS HIGH AS POSSIBLE BUT BELOW PIPING	120	1-150 WATT A-21
B	KILLARK NO. VOBL-100	INDUSTRIAL VAPORTIGHT INCANDESCENT WALL MOUNT AT 7'-0" AFF	120	1-150 WATT A-21

### MOTOR AND EQUIPMENT SCHEDULE

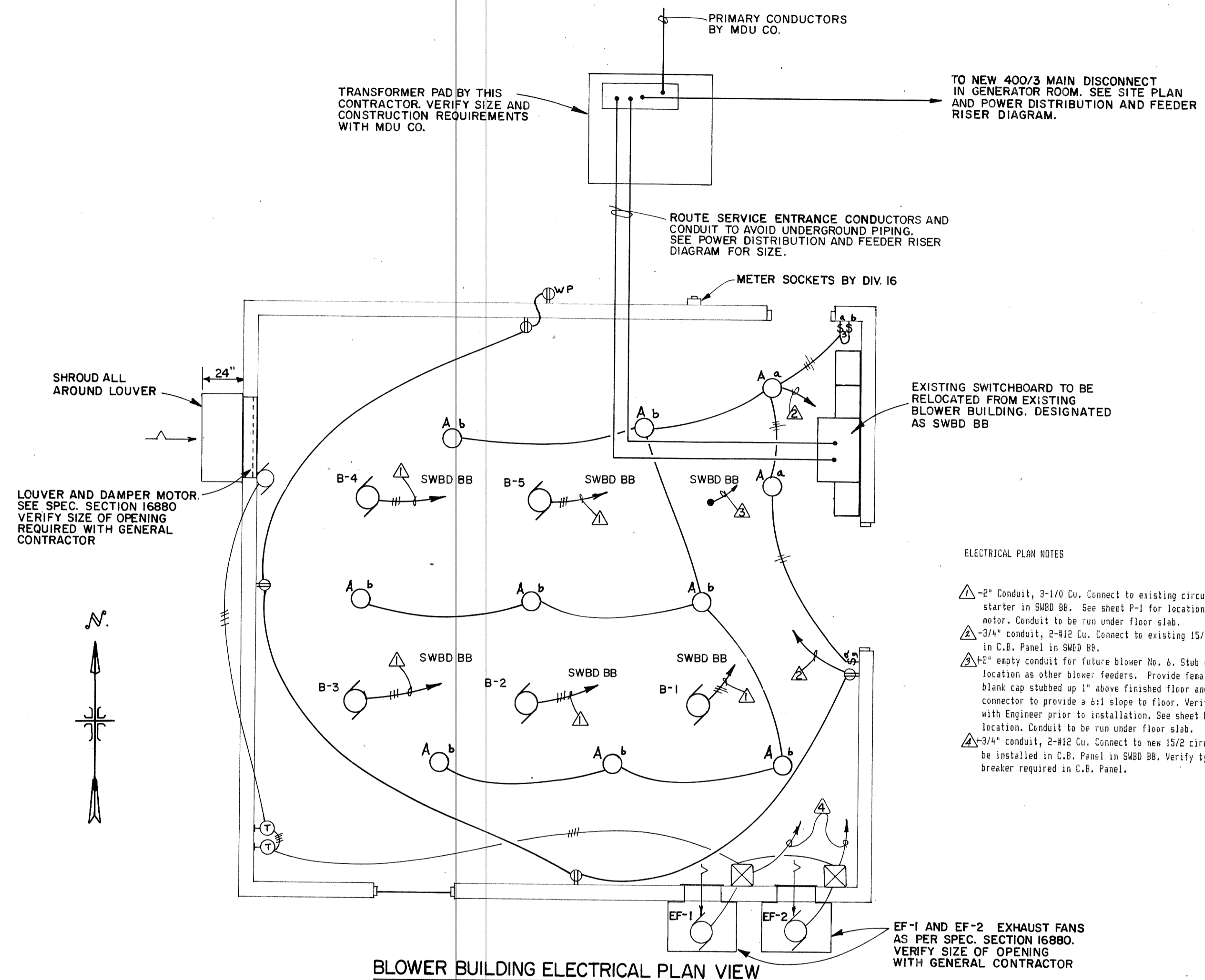
NO.	DESCRIPTION	ROOM	HP	KW	AMPS	VOLT	Ø	CONTROL / REMARKS
B-1	BLOWER NO. 1		60		77	480	3	CONNECT TO CB/STARTER IN SWBD BB
B-2	BLOWER NO. 2		60		77	480	3	"
B-3	BLOWER NO. 3		60		77	480	3	"
B-4	BLOWER NO. 4		60		77	480	3	"
B-5	BLOWER NO. 5		60		77	480	3	"
EF-1	EXHAUST FAN NO. 1		1		8	240	1	THERMOSTAT
EF-2	EXHAUST FAN NO. 2		1		8	240	1	"



POWER DISTRIBUTION AND FEEDER RISER DIAGRAM  
NO SCALE



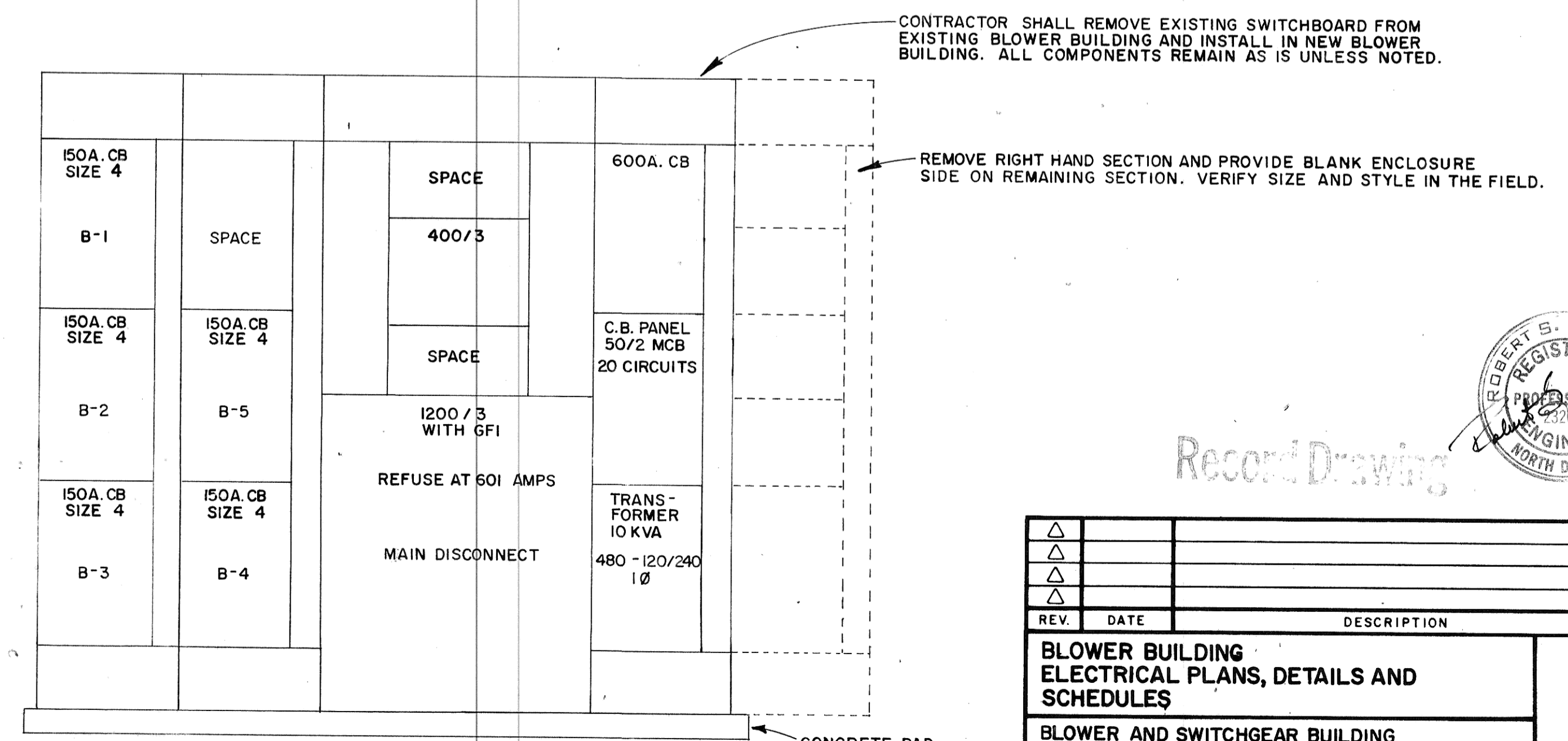
PARTIAL SITE PLAN  
1" = 20'



BLOWER BUILDING ELECTRICAL PLAN VIEW  
1/4" = 1'-0"

#### ELECTRICAL PLAN NOTES

- △ 2" Conduit, 3-1/0 Cu. Connect to existing circuit breaker/ starter in SWBD BB. See sheet P-1 for location of conduit at motor. Conduit to be run under floor slab.
- △ 3/4" conduit, 2-#12 Cu. Connect to existing 15/1 circuit breaker in C.B. Panel in SWBD BB.
- △ 2" empty conduit for future blower No. 6. Stub up in similar location as other blower feeders. Provide female connector and blank cap stubbed up 1" above finished floor and grout around connector to provide a 1/4" slope to floor. Verify exact location with Engineer prior to installation. See sheet P-1 for approximate location. Conduit to be run under floor slab.
- △ 3/4" conduit, 2-#12 Cu. Connect to new 15/2 circuit breakers to be installed in C.B. Panel in SWBD BB. Verify type of circuit breaker required in C.B. Panel.



EXISTING SWITCHBOARD ELEVATION  
NOT TO SCALE

REV.	DATE	DESCRIPTION	BY

**BLOWER BUILDING ELECTRICAL PLANS, DETAILS AND SCHEDULES**

BLOWER AND SWITCHGEAR BUILDING  
MANDAN, NORTH DAKOTA

ULTEIG ENGINEERS, INC. CONSULTING ENGINEERS  
FARGO • BISMARCK • MINNEAPOLIS

DRAWN BY: RSG/BJH SCALE: AS SHOWN PROJECT NO. 88649  
CHECKED BY: DATE: JAN, 1989  
APPROVED BY: SHEET E-1 of