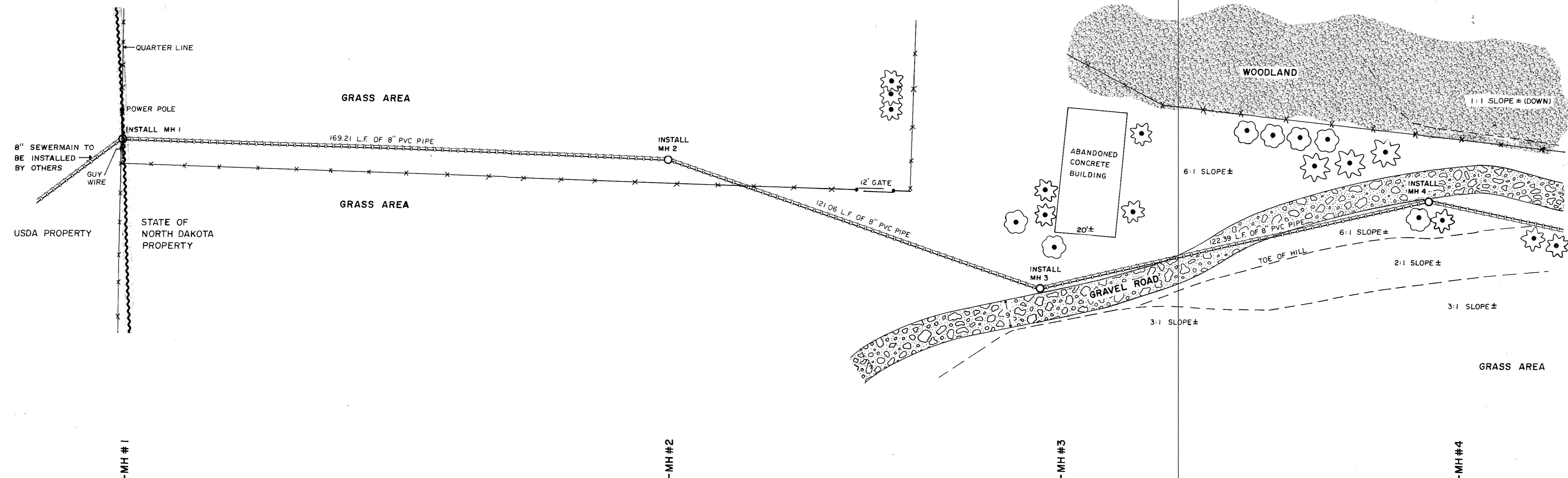
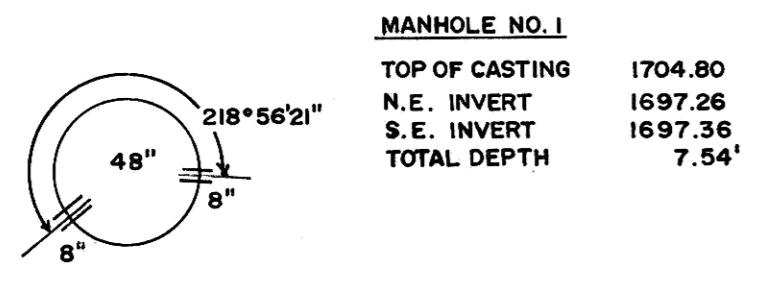
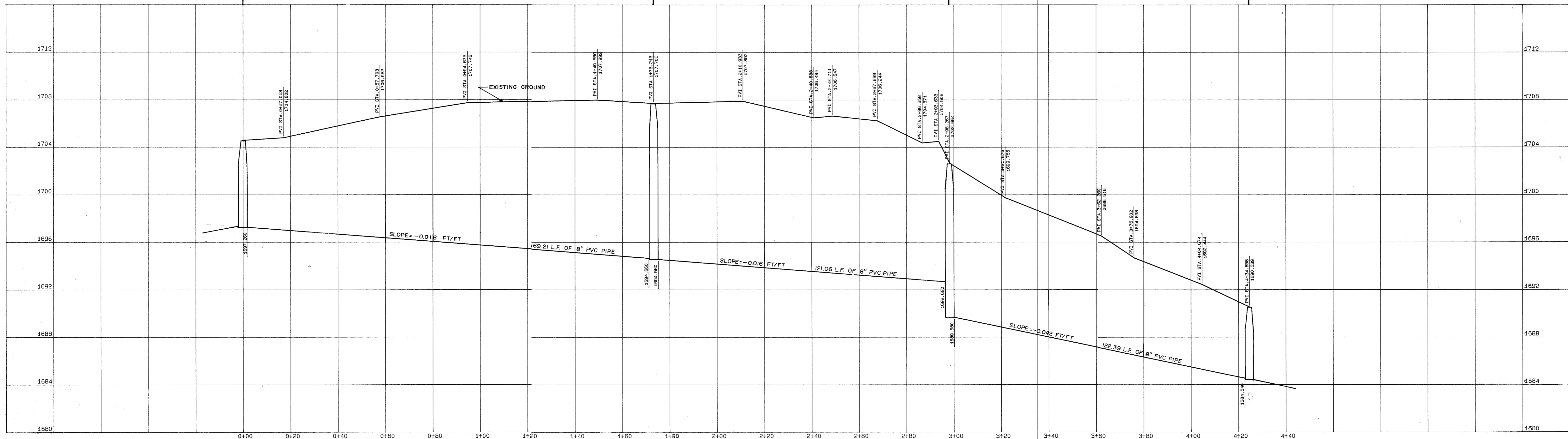


HOR. SCALE: 1" = 20'
VERT. SCALE: 1" = 4'

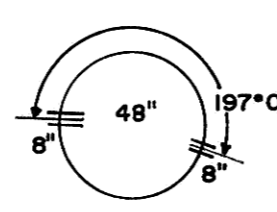


SEE SHEET #3

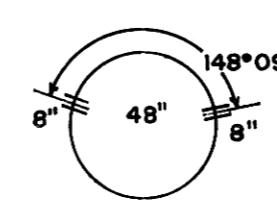
CAUTION
LOCATE ALL BURIED UTILITIES BEFORE DIGGING.
OVER HEAD POWER



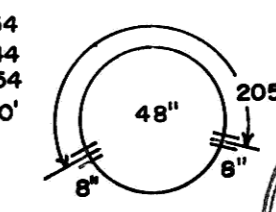
MANHOLE NO. 1
TOP OF CASTING 1704.80
N.E. INVERT 1697.26
S.E. INVERT 1697.36
TOTAL DEPTH 7.54'



MANHOLE NO. 2
TOP OF CASTING 1707.70
N.E. INVERT 1694.56
SOUTH INVERT 1694.66
TOTAL DEPTH 13.14'



DROP MANHOLE NO. 3
TOP OF CASTING 1702.66
N.W. INVERT 1689.68
S.W. INVERT 1692.68
TOTAL DEPTH 12.98'



MANHOLE NO. 4
TOP OF CASTING 1690.54
N.E. INVERT 1684.44
S.E. INVERT 1684.54
TOTAL DEPTH 6.10'



PROJECT NO.	1089	 TELCO TOMAN ENGINEERING COMPANY CONSULTING CIVIL & ENVIRONMENTAL ENGINEERS <small>1000 17th St. N.W. Grand Forks, ND 58001</small>
DATE	7-91	
PLAN & PROFILE		

MANHOLE NO. 1 TO MANHOLE NO. 4