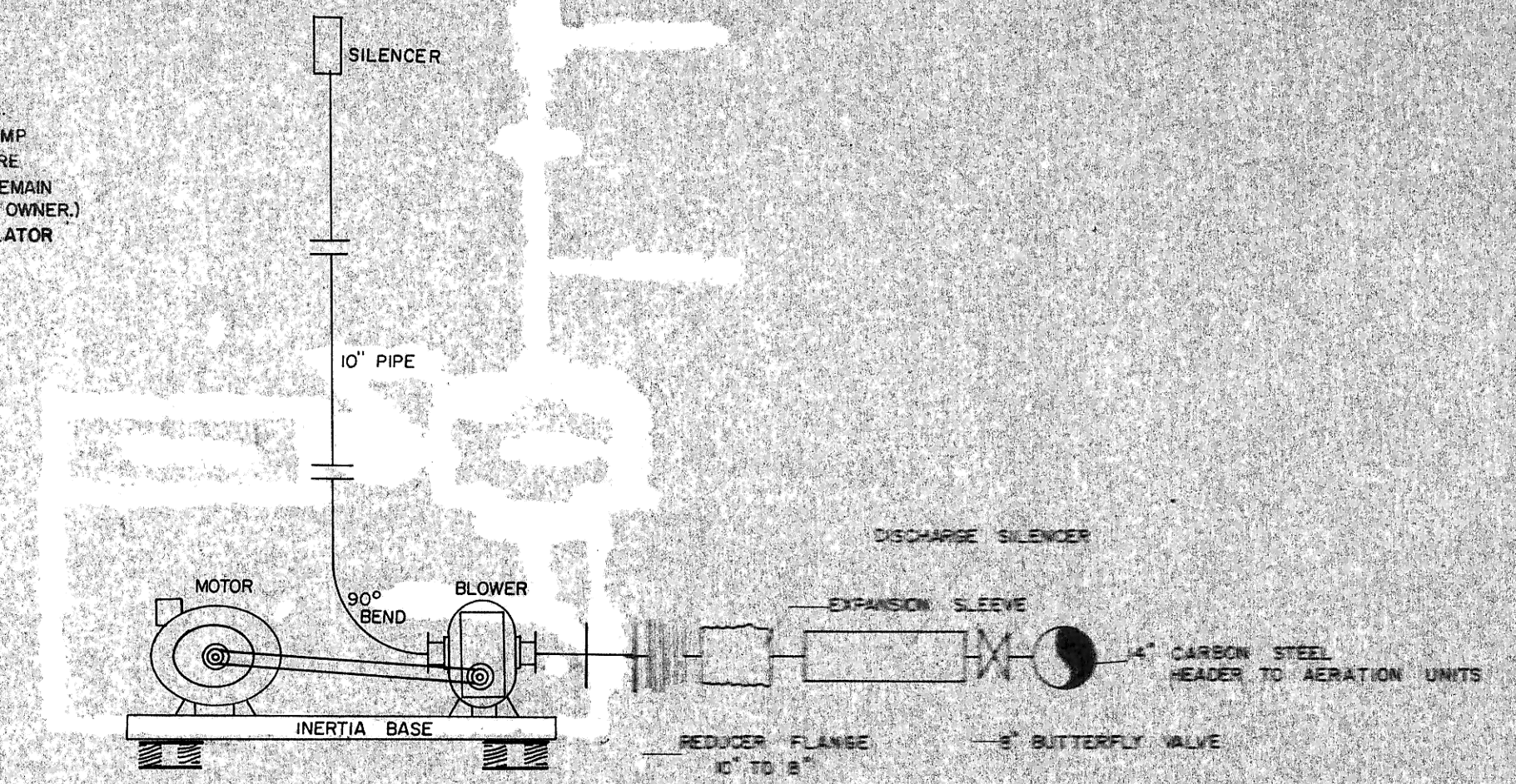
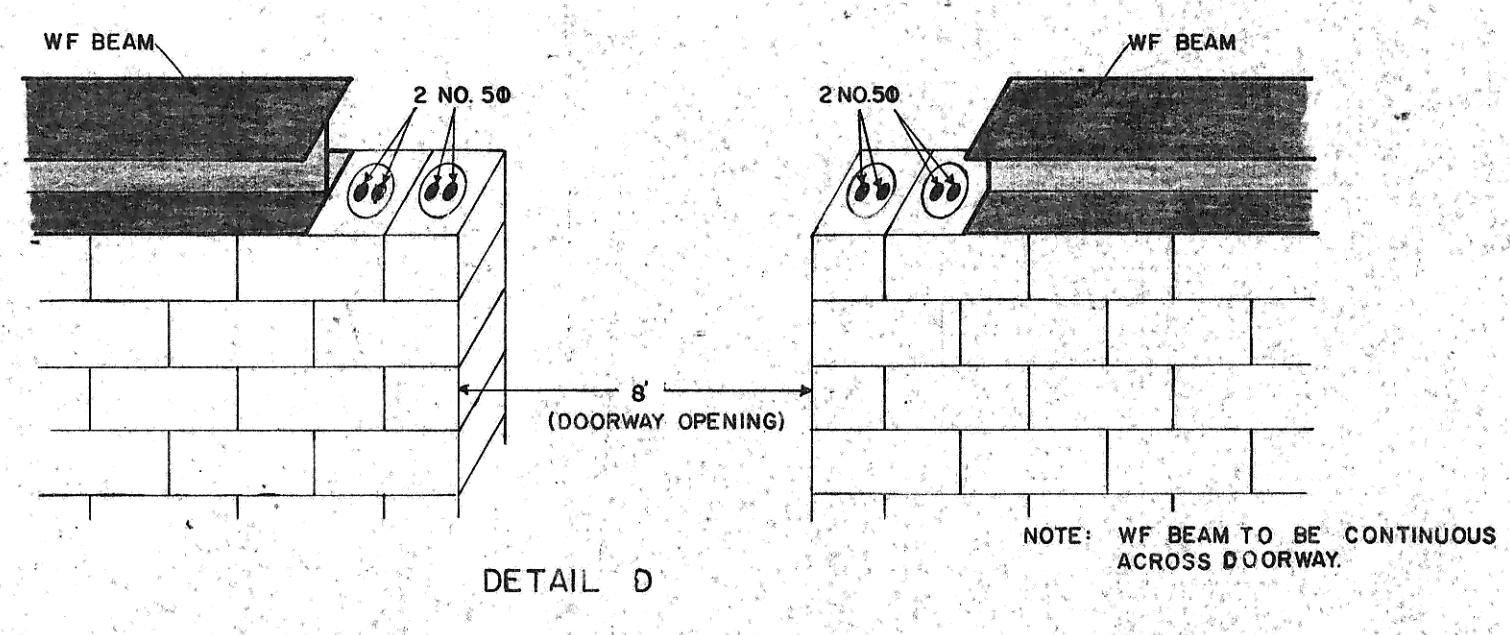
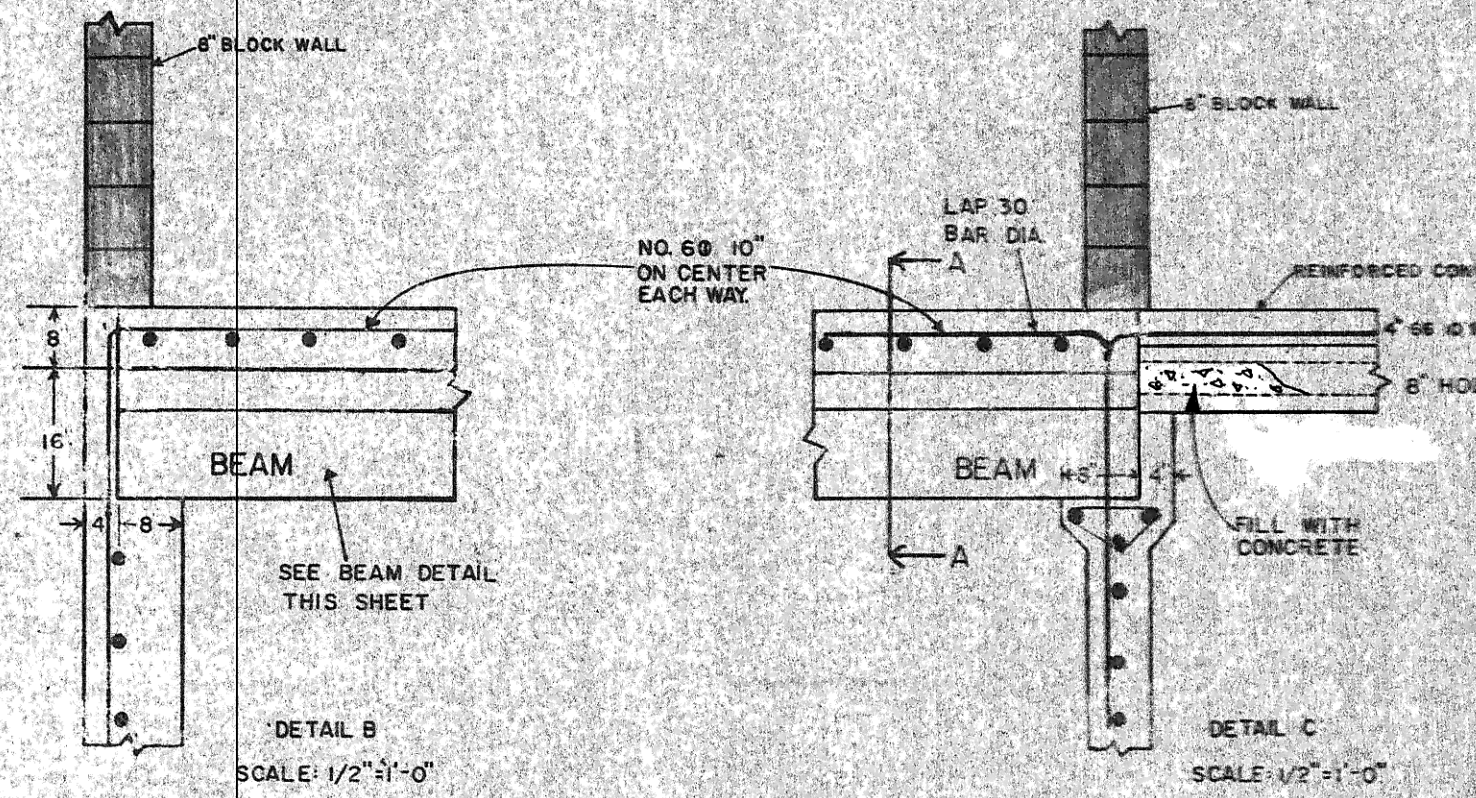
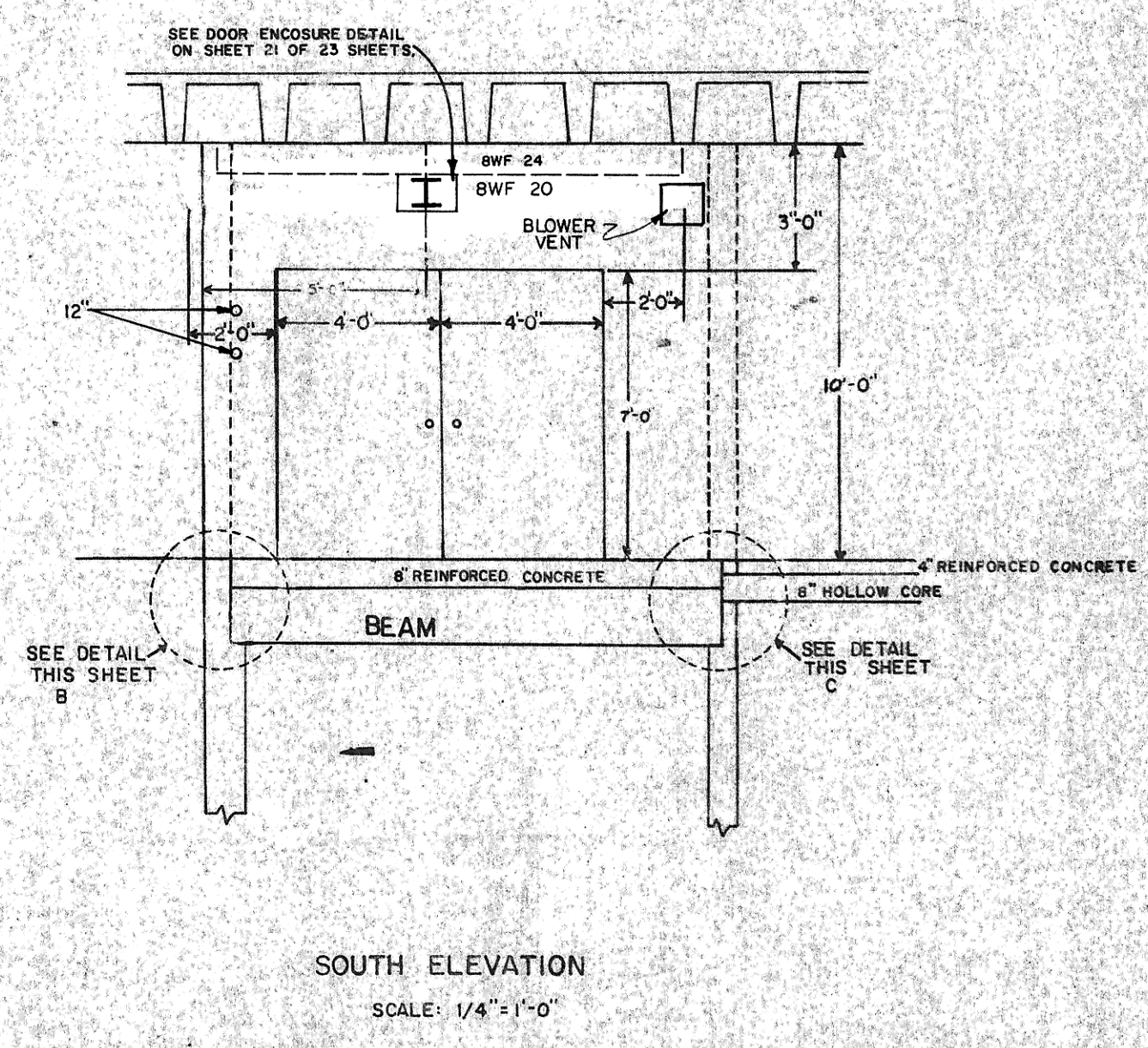
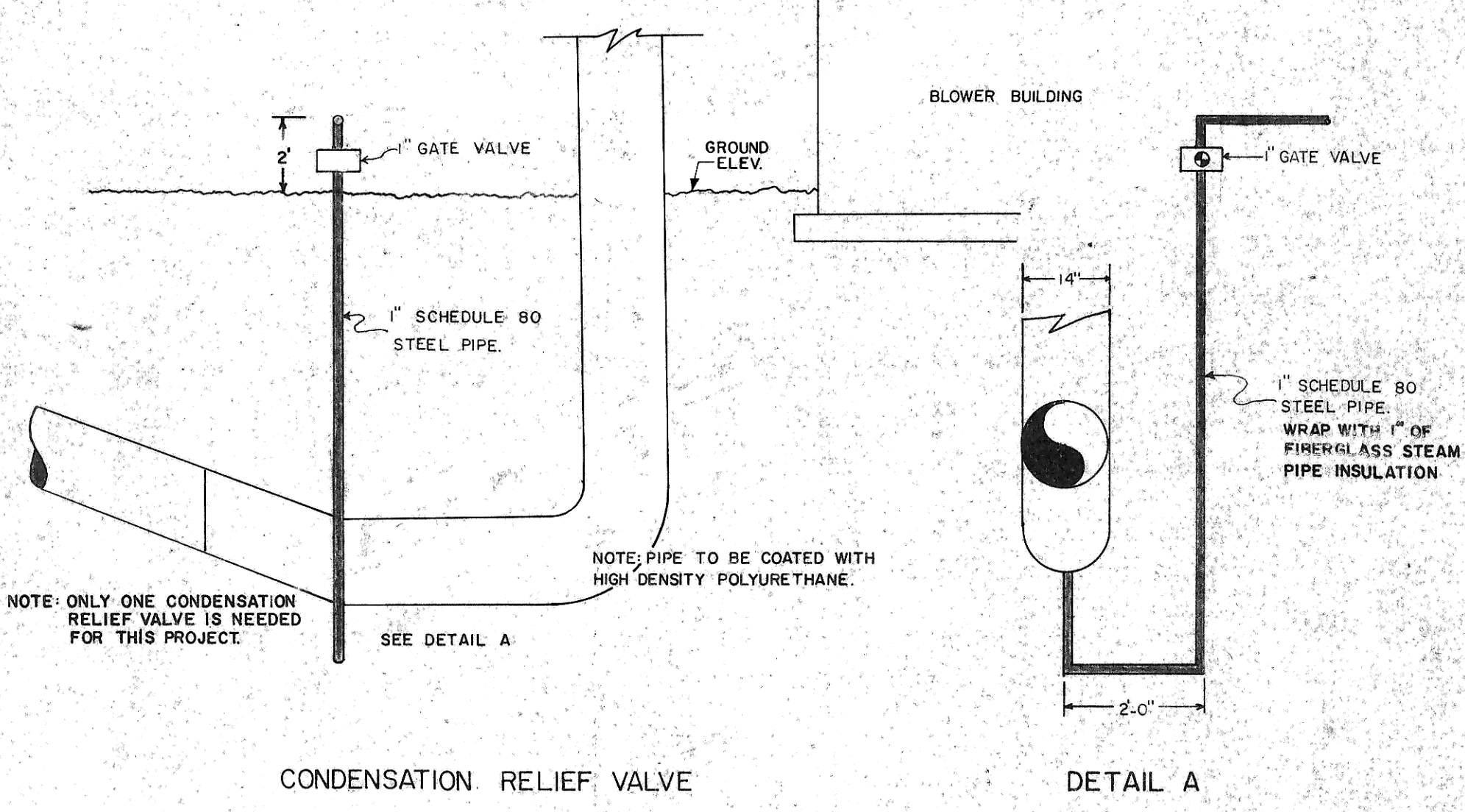
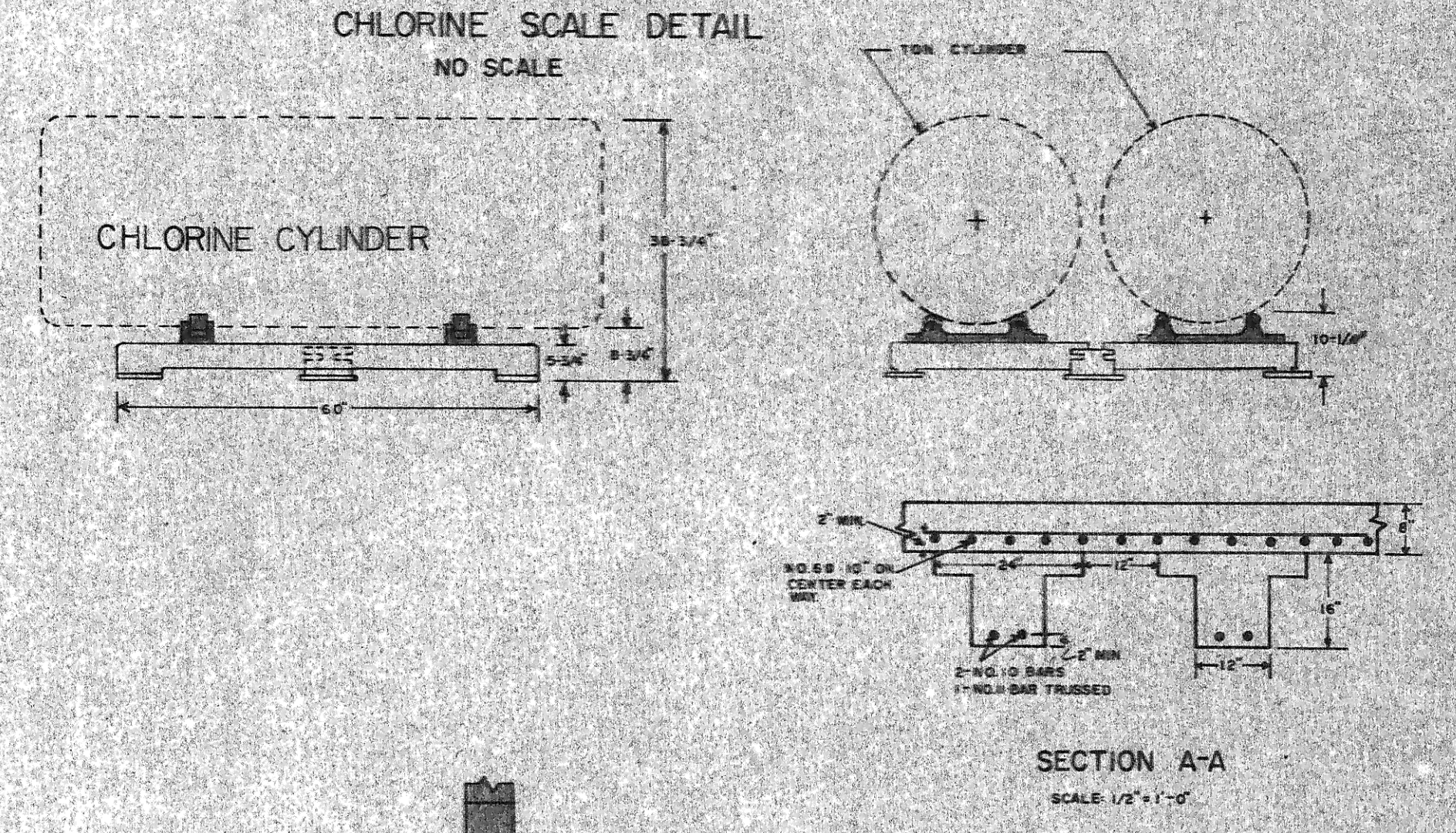
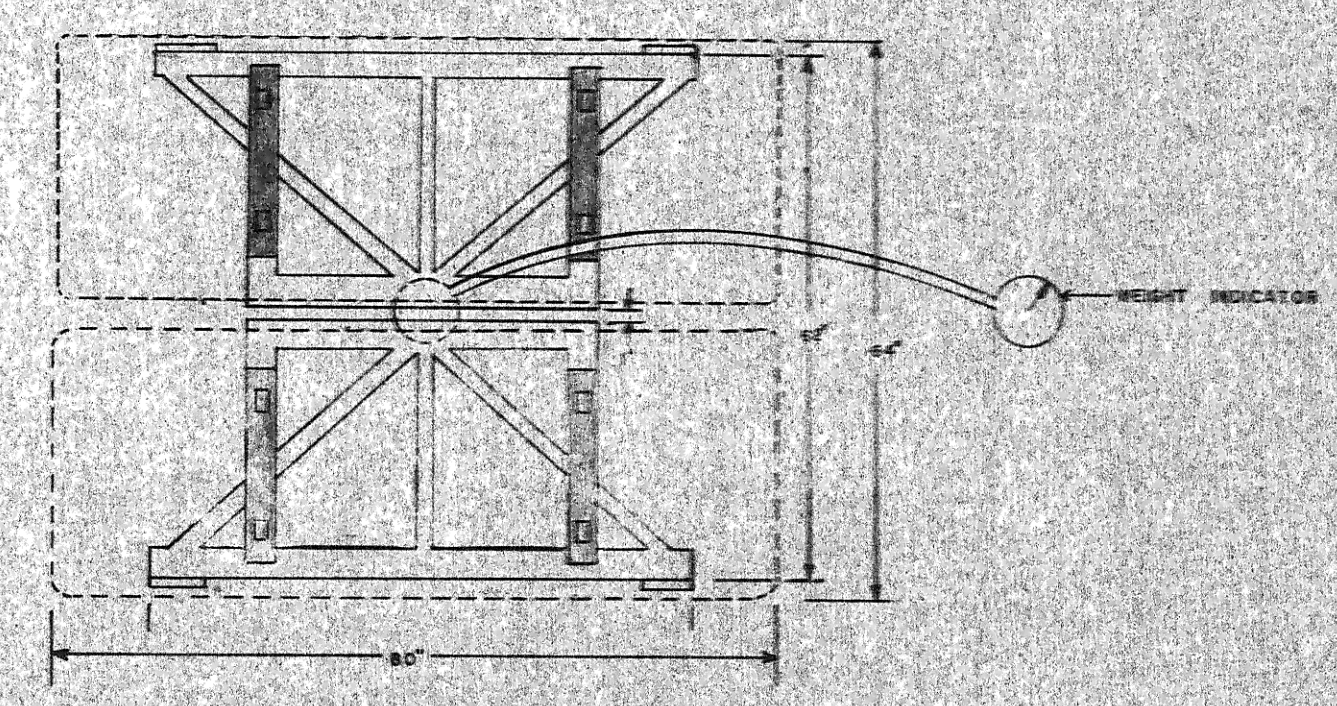
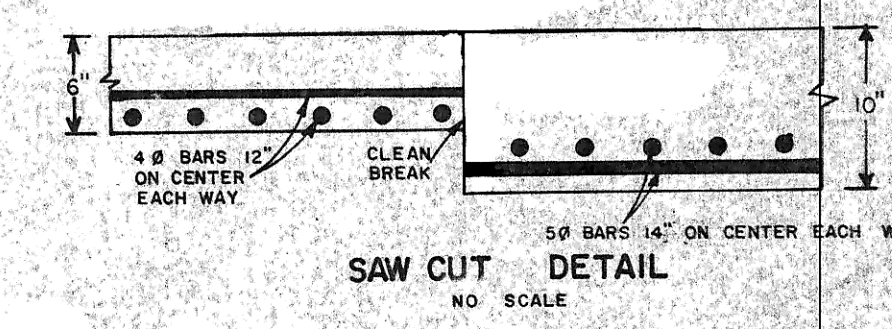
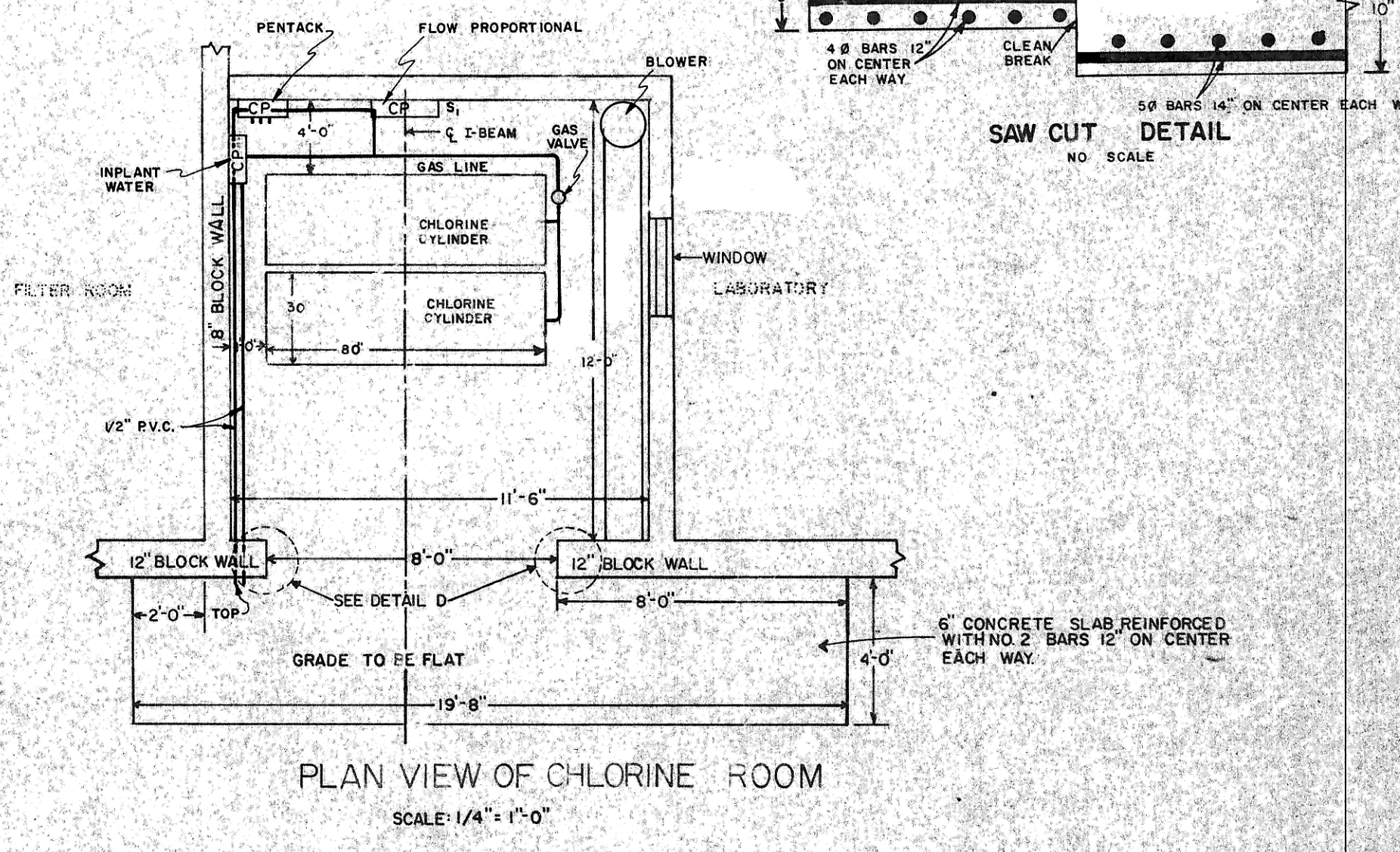
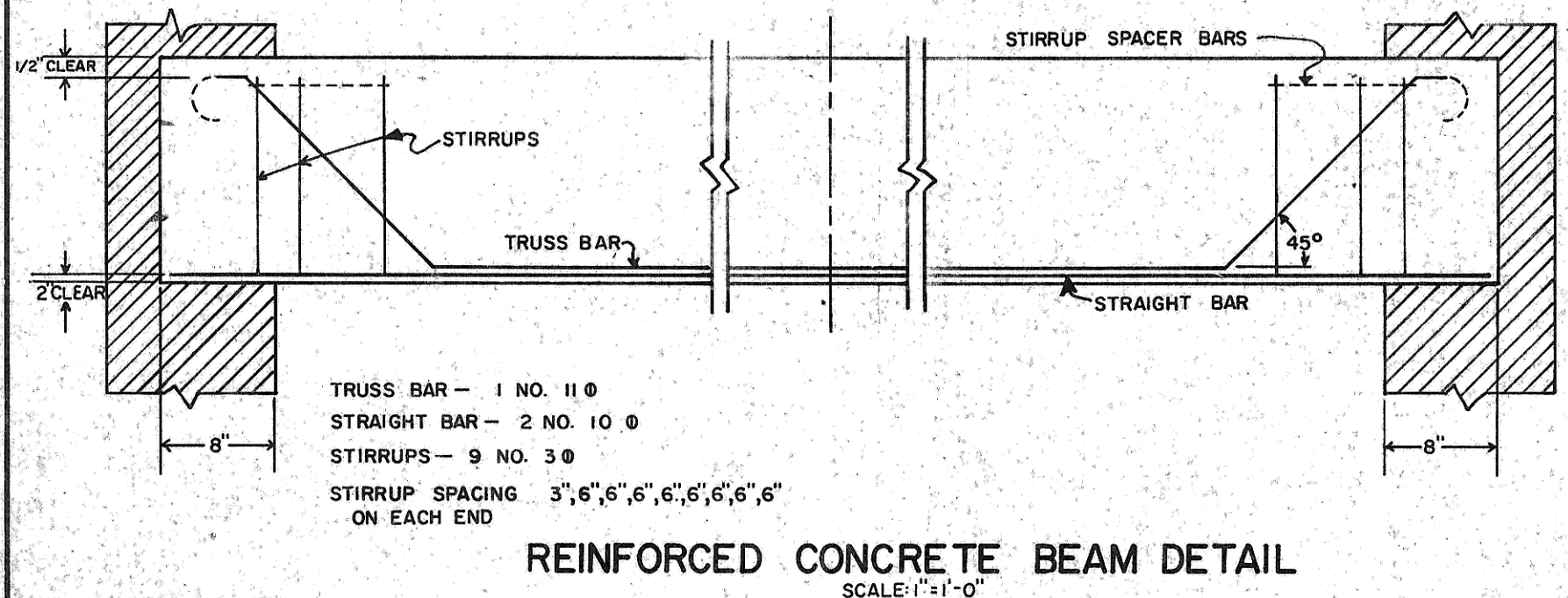


- LEGEND
- (M) MOTOR 75 HP 480V 3Ø
 - (B) BLOWER
 - (P) PUSH BUTTON ON/OFF SWITCH

NOTE: BLOWER & MOTOR FRAME SHALL BE APPROX. 18" x 30" x 24"



NOTE: ALL FIVE (5) BLOWERS SHALL BE HOOKED TO HEADER PIPE



UPGRADING WASTEWATER TREATMENT FACILITIES
INCREMENT NO. 1 E.P.A. NO. C380325-03
CONTRACTOR'S RECORD DRAWINGS (AS BUILT)

FILE NO. DATE
REVISED

SHEET NO. 15 OF 23 SHEETS

DRAWN BY: CHECKED BY:

**BLOWER BUILDING AND
CHLORINE ROOM DETAILS**

REVISED APRIL 1977