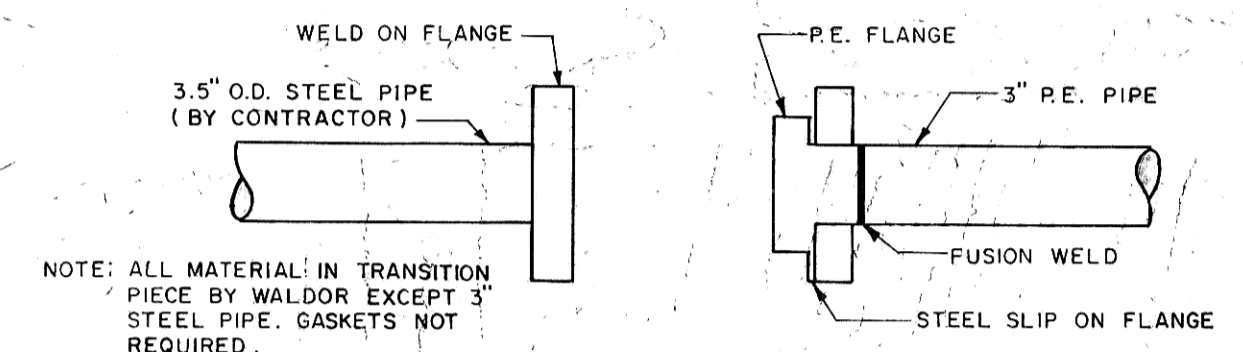
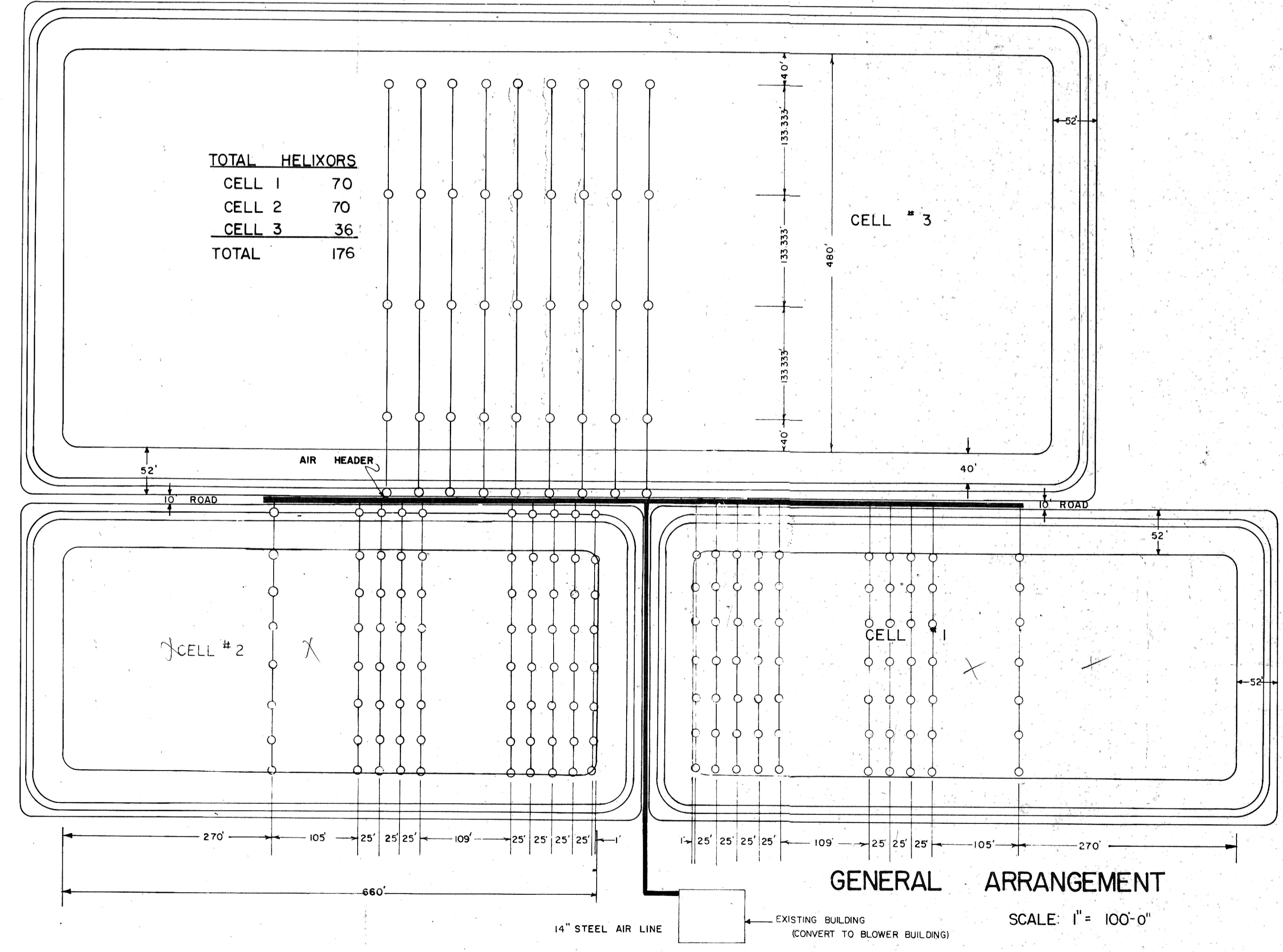
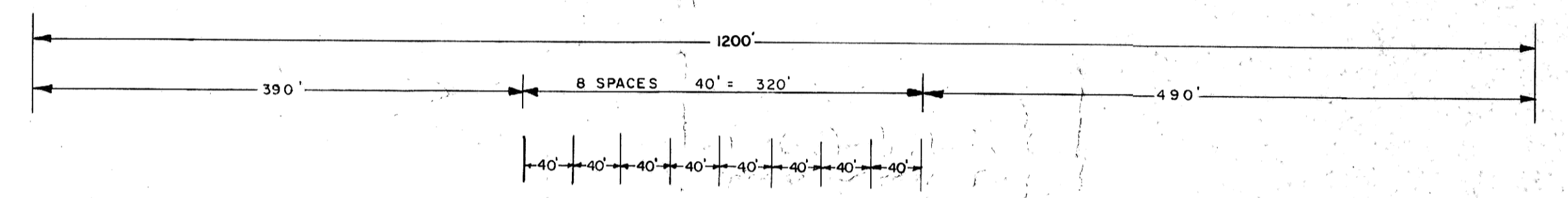


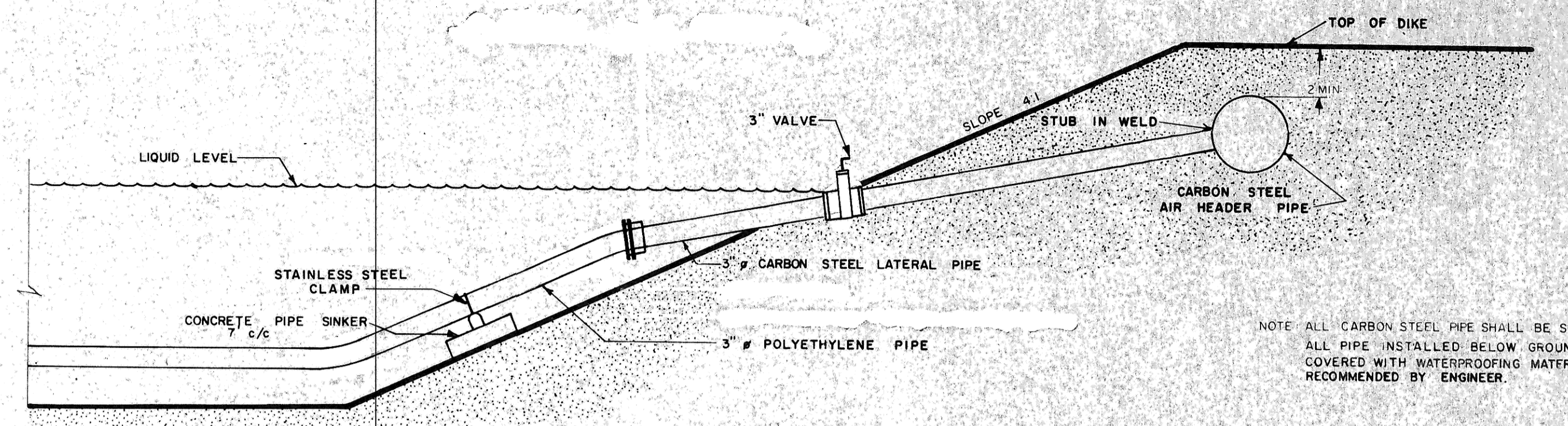
ANCHOR BOLT BRACKET



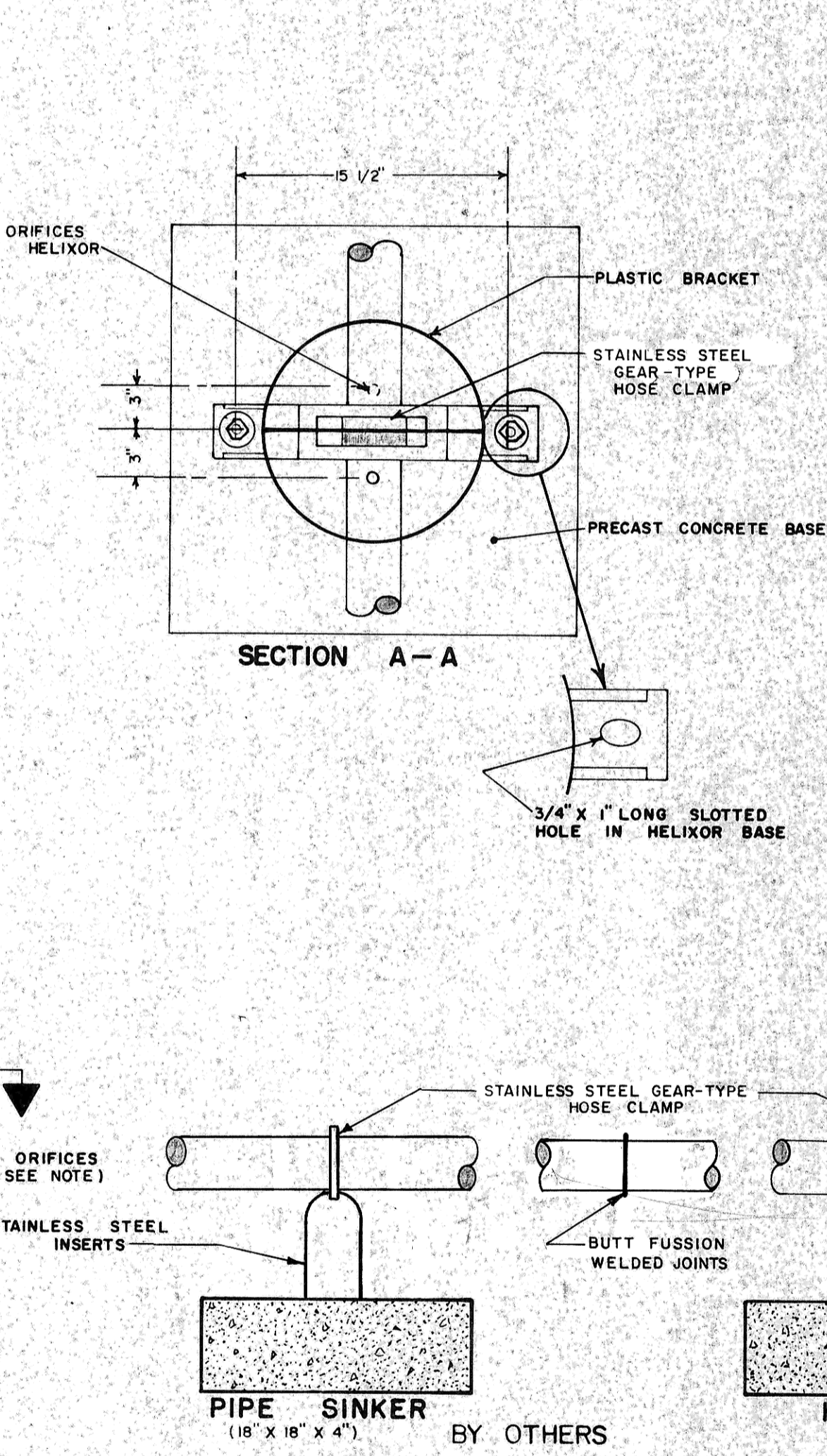
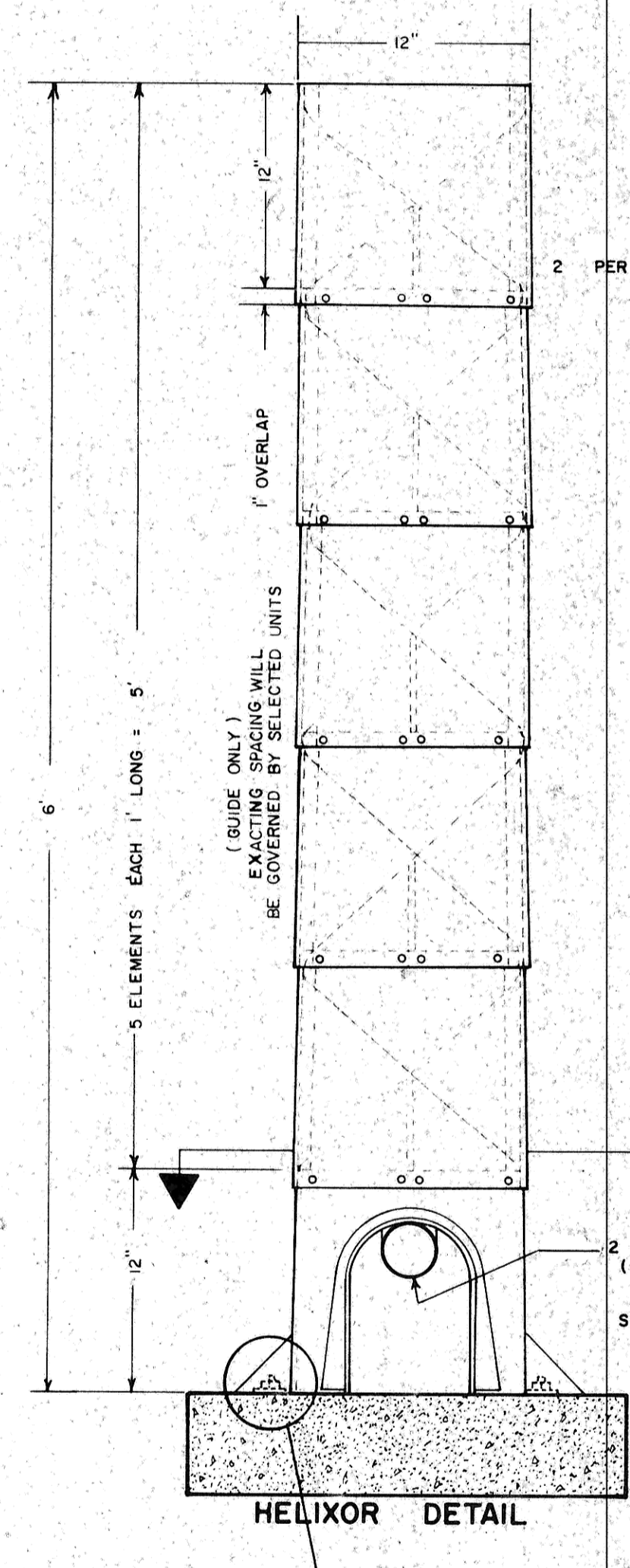
COUPLING DETAIL



GENERAL ARRANGEMENT
SCALE: 1" = 100'-0"



NOTE: ALL SUBMERGED PARTS SHALL BE CORROSION RESISTANT



Each element shall be mold injected from high density polyethylene with 2.5% fiberglass reinforcing and containing 2% black carbon, or similarly approved process.

NOTE: THIS DRAWING IS INCLUDED AS A GUIDE AND STANDARD FOR THE DESIGN CONCEPT ACCEPTABLE FOR THE PERFORMANCE. THIS DEPICTS POLCON CORPORATION TREATMENT WHICH IS INCLUDED OTHER TYPES MEETING SPACE AND PERFORMANCE REQUIREMENTS WILL BE CONSIDERED.

NOTE: AT NO TIME WILL THE CONTRACTOR ALLOWED TO DISCHARGE SEWAGE INTO THE RIVER.

NOTE: ALL ORIFICES IN CELLS 1 & 2 ARE 1/2". THE FIRST 3 HELIXORS FROM THE HEADER PIPE IN CELL 3 HAVE 1/2" ORIFICES. THE LAST HELIXOR IN EACH ROW OF CELL 3 HAS 5/8" ORIFICES.

Job: UPGRADING WASTEWATER TREATMENT FACILITIES
INCREMENT NO.1 E.P.A. NO.C380325-03
CONTRACTOR'S RECORD DRAWINGS (AS BUILT)

Date: SEPTEMBER 1976
Revised:

File No. SHEET NO. 19 OF 23 SHEETS

Scale: DRAWN BY: CHECKED BY:

HELIXOR DETAILS

George J. Toman
R. P. E. No. 185
Consulting Engineer
Mandan, North Dakota