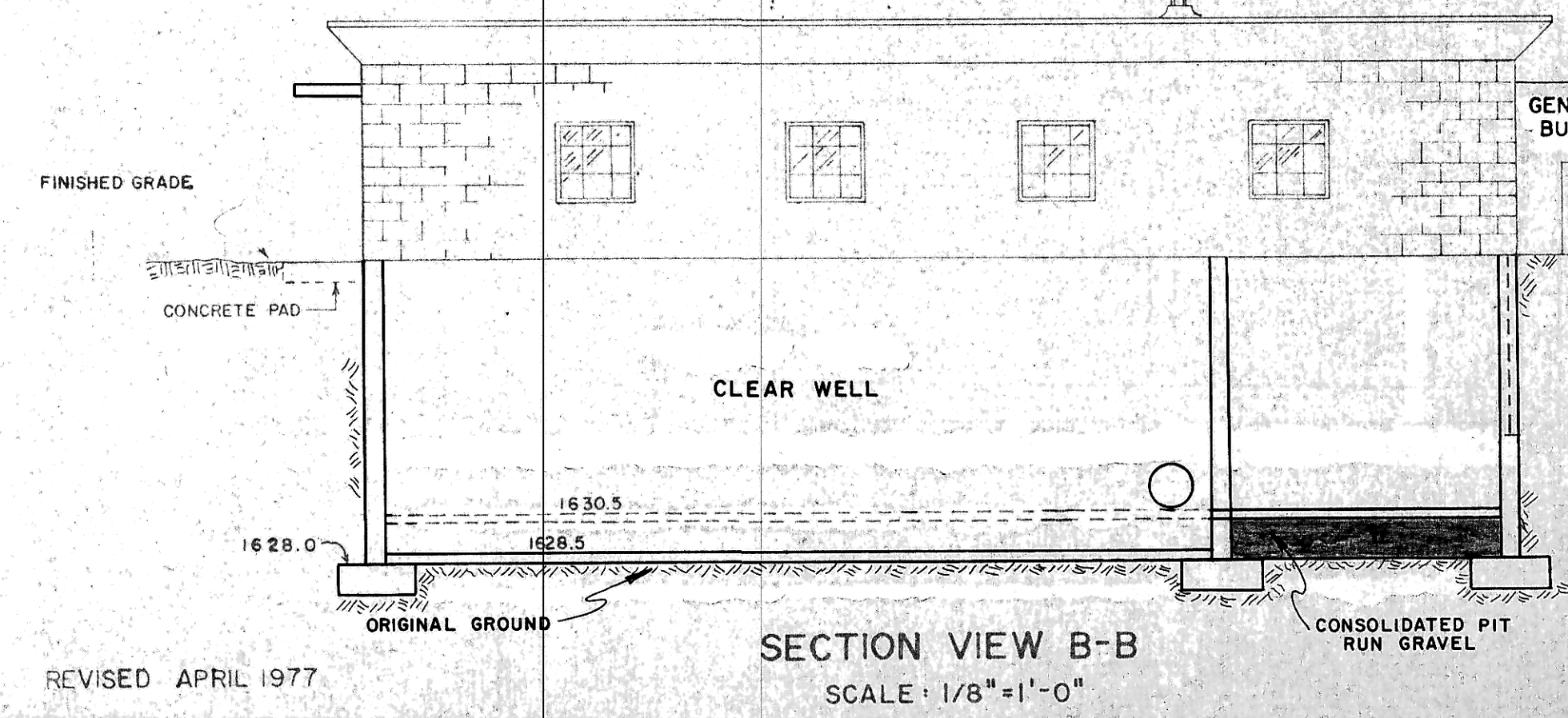
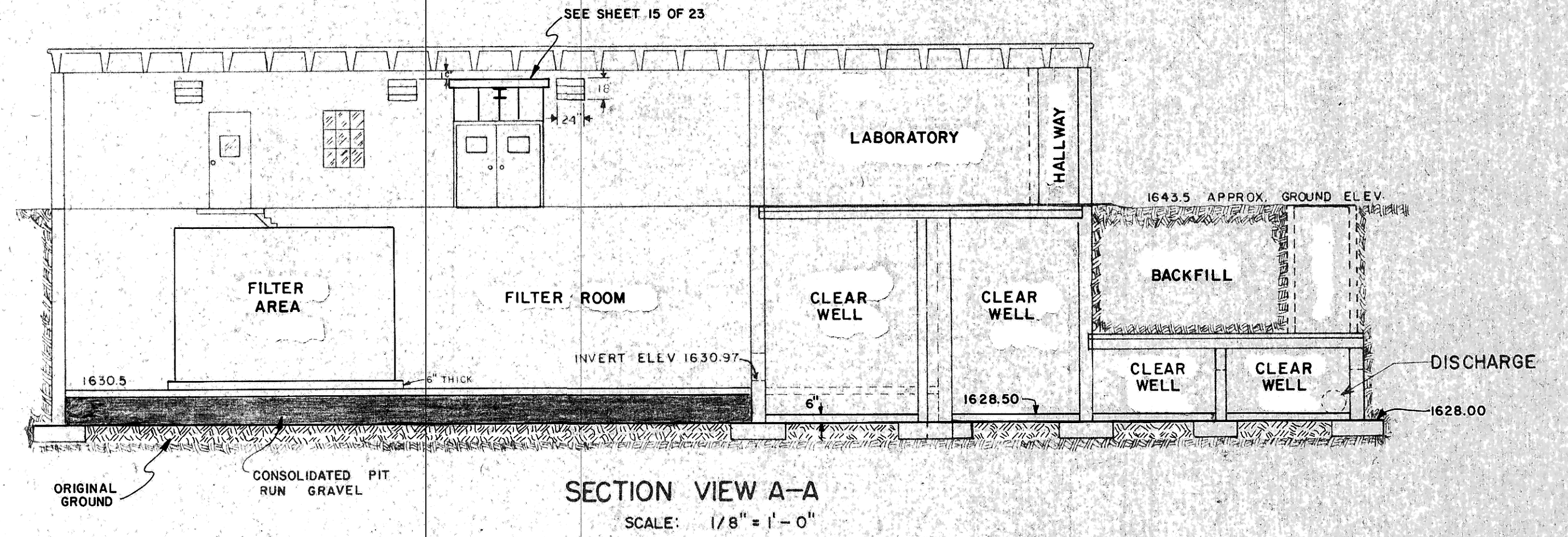
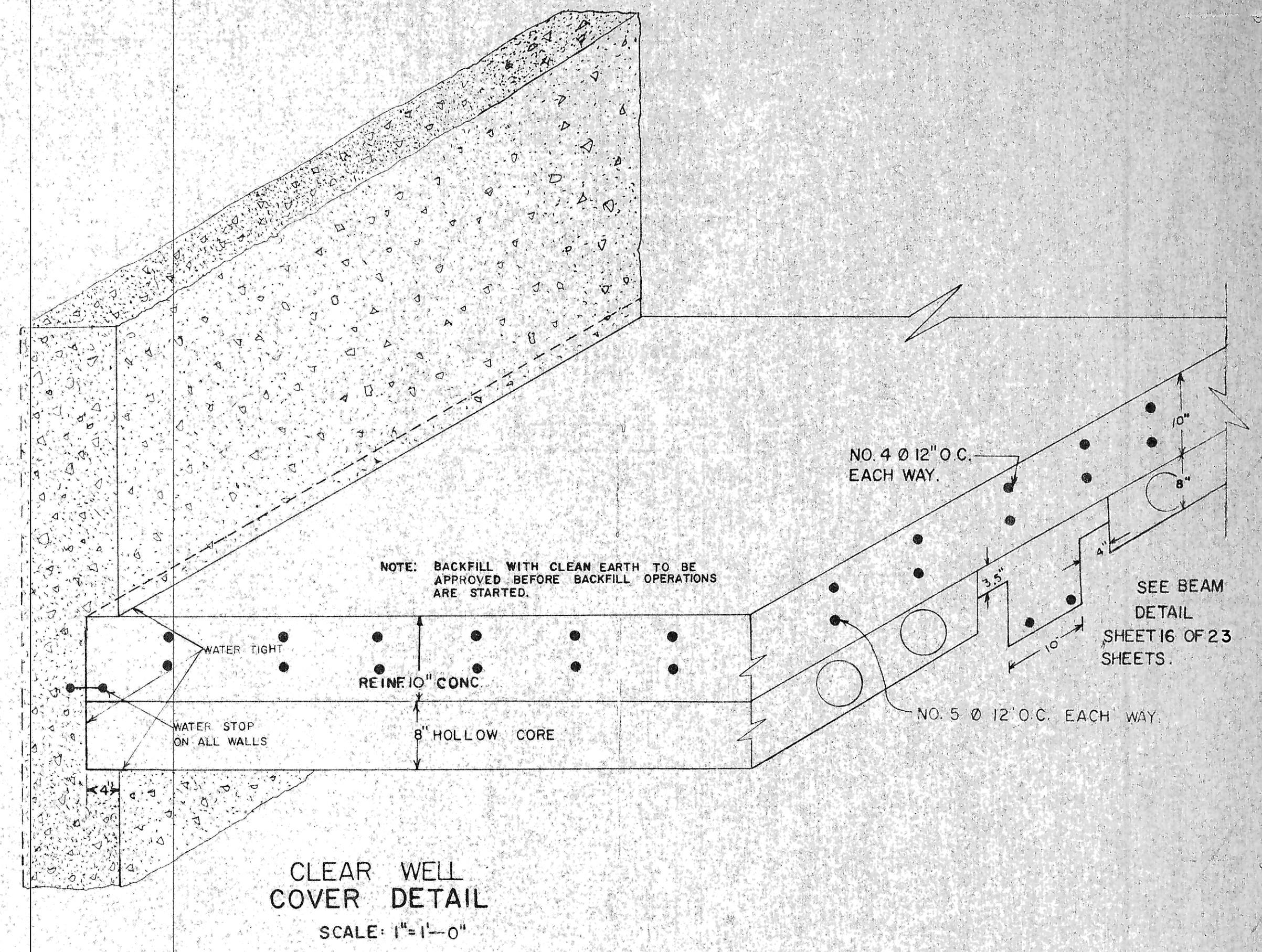
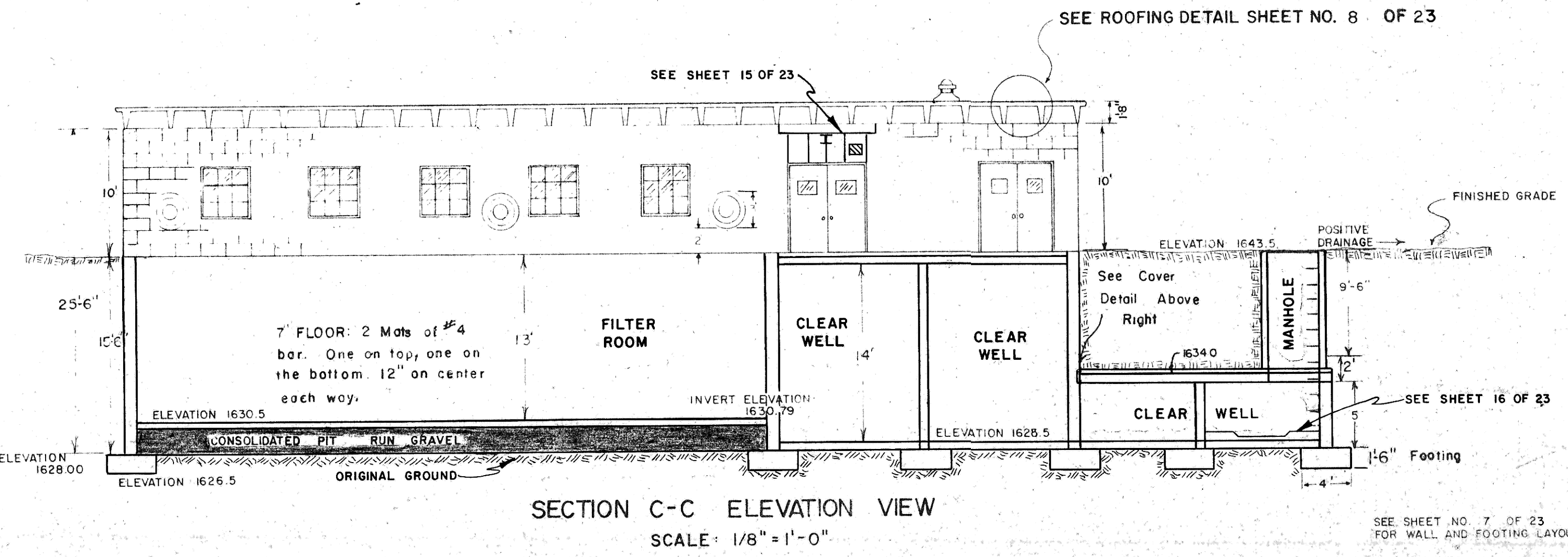


DOOR SCHEDULE

MARK	SIZE	MATERIAL	FRAME	REMARKS
1	4' x 7' x 1 3/4"	H. MTL	H. MTL	WITH 15" x 15" GLASS LITE
2	2' - 3' x 7' x 1 3/4"	H. MTL	H. MTL	LEFT HAND ACTIVE WITH 15" x 15" GLASS LITE
3	18" x 18"	STEEL	STEEL	WINDOW
4	3' - 8" x 4' - 11"	STEEL	STEEL	SIMILAR TO CECO STEEL NO. -631120
5	2' - 4' x 7' x 1 3/4"	H. MTL	H. MTL	WITH LOUVERS AT BOTTOM OF DOOR & GLASS 37" x 15"
6	3' x 7' x 1 3/4"	H. MTL	H. MTL	CECO NO. R-3070M HEAVY METAL DOOR
7	3' x 7' x 1 3/4"	H. MTL	H. MTL	CECO NO. R-3070-G2 DOOR & GLASS 37" x 15"

NOTE: EXTERIOR DOOR SLABS SHALL BE FOUR FEET WIDE AND EXTEND ONE FOOT ON EACH SIDE OF DOOR OPENINGS.
ALL DOORS SHOULD OPEN TOWARD THE EXTERIOR OF THE BUILDING.



UPGRADING WASTEWATER TREATMENT FACILITIES
INCREMENT NO. 1 E.P.A. NO. C 380325-03
CONTRACTOR'S RECORD DRAWINGS (AS BUILT)

FILE NO. DATE
REVISED: SEPTEMBER 1976

SHEET NO. 4 OF 23 SHEETS
INCREMENT 1

BUILDING FLOOR PLAN
AND SECTION VIEWS

Toman Engineering Company
Civil & Environmental Consultants
P. O. Box 708 P. O. Box 852
Mandeville, LA 70401

REVISED APRIL 1977

SEE SHEET NO. 7 OF 23
FOR WALL AND FOOTING LAYOUTS